

Converting Colors

XYZ(71.2394, 73.2567, 69.1387)

Have a look what the booklet for
XYZ(71.2394, 73.2567, 69.1387)
contains.

XYZ(71.4478, 73.5243, 69.4574)	3
<i>Conversions</i>	4
<i>Details</i>	6
<i>Harmonies</i>	12
<i>Previews</i>	24
<i>Color Blindness Simulation</i>	28
<i>CSS Examples</i>	31

Color

**XYZ(71.4478, 73.5243,
69.4574)**

Conversions

Conversions Part 1

Format	Color
Hex	ECDCCF
RGB	236, 220, 207
RGB Percent	93%, 86%, 81%
CMY	0.0745, 0.1372, 0.1882
CMYK	0.00, 0.07, 0.12, 0.07
HSL	27°, 43%, 87%
HSV	27°, 12%, 93%
XYZ	71.4478, 73.5243, 69.4574
YIQ	223.3020, 13.7090, -0.6510

Conversions

Conversions Part 2

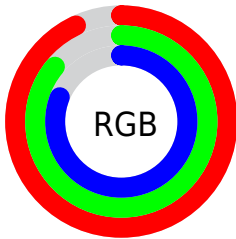
Format	Color
R _Y B	236, 231, 207
Decimal	15523023
CIE Lab	88.70, 3.34, 8.35
CIE LCh	89, 8.991, 68.163
Yxy	73.5243, 0.3332, 0.3429
Android (android.graphics.Color)	4293713103 (0xFFECCCF)
YUV	223.3020, -8.0369, 11.1361
Hunter-Lab	85.7463, -1.3216, 11.9955

Details

The XYZ color **71.4478, 73.5243, 69.4574** is a light color, and the websafe version is hex **CCCCCC**. A complement of this color would be **67.2599, 72.0955, 89.7285**, and the grayscale version is **70.4042, 74.0707, 80.6630**.

A 20% lighter version of the original color is **95.0500, 100.0000, 108.9000**, and **38.0273, 38.9135, 35.6438** is the 20% darker color. If you saturate the color by 10%, you get **65.4916, 65.8888, 54.2852**, and if you desaturate by 10%, it is **78.1054, 81.8709, 86.9928**.

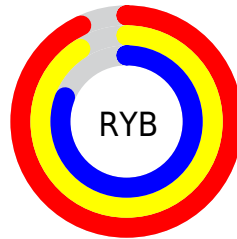
Distribution



Red (93%)

Green (86%)

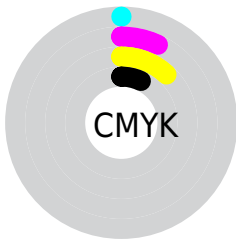
Blue (81%)



Red (93%)

Yellow (91%)

Blue (81%)

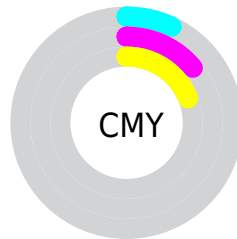


Cyan (0%)

Magenta (7%)

Yellow (12%)

Black (7%)



Cyan (7%)

Magenta (14%)

Yellow (19%)

Brightness & Saturation Gradients

These gradients show how the XYZ color 71.4478, 73.5243, 69.4574 changes by changing the brightness by 10 percent. The first figure shows a shift by +10% for each color and the second figure -10%.

Similar to the brightness gradients but the following saturation gradients show a change of the XYZ color 71.4478, 73.5243, 69.4574 by changing the saturation by 10% instead.

71.4478, 73.5243,
69.4574

71.4478, 73.5243,
69.4574

454.8048,
472.8299, 477.3801

52.9916, 54.4048,
50.6102

120.2862,
124.2212, 120.1085

38.0235, 38.9254,
35.5239

151.3990,
156.5674, 152.7495

26.1782, 26.7017,
23.7800

187.4615,
194.0913, 190.8255

17.0904, 17.3493,
14.9598

228.8388,
237.1773, 234.7551

10.3947, 10.4838,
8.6449

275.8965,
286.2098, 284.9569

5.7257, 5.7209,
4.4166

328.9998,

2.7181, 2.6761,

341.5731, 341.8492

1.8566

388.5141,
403.6517, 405.8508

■ 1.0065, 0.9651,
0.4649

■ 0.0000, 0.0000,
0.0000

■ 71.4478, 73.5243,
69.4574

■ 71.4478, 73.5243,
69.4574

■ 65.4916, 65.8888,
54.2852

■ 78.1054, 81.8709,
86.9928

■ 60.2056, 58.9350,
41.3691

■ 85.4821, 90.9377,
106.9828

■ 55.5653, 52.6455,
30.6006

■ 88.4024, 96.5730,
108.5889

■ 51.5417, 46.9984,
21.8604

■ 48.1037, 41.9704,
15.0172

■ 45.2168, 37.5365,
9.9242

■ 42.8420, 33.6692,
6.4126

■ 40.9335, 30.3379,
4.2793

■ 39.7289, 28.1060,
3.3311

Harmonies

Analogous

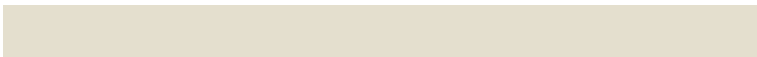
The Analogous color harmony consists of three colors that are next to each other on the color wheel.



73.2183, 73.5243, 72.8894



71.4478, 73.5243, 69.4574



69.2913, 73.5243, 68.7890

Triad

The Triadic color harmony groups three colors that are evenly spaced from another and form a triangle on the color wheel.



71.4478, 73.5243, 69.4574



65.8292, 73.5243, 81.7659



72.4953, 73.5243, 89.8337

Complementary

The Complementary color scheme is a pair of colors which are on the opposite of each other on the color wheel.



71.4478, 73.5243, 69.4574



67.2599, 72.0955, 89.7285

Split Complementary

Split-complementary colors differ from the complementary color scheme. The scheme consists of three colors, the original color and two neighbors of the complement color.



70.4774, 73.5243, 92.4895



71.4478, 73.5243, 69.4574



66.6498, 73.5243, 87.6765

Square

The Square scheme is like the rectangle color scheme, but the four colors are evenly spaced on the color wheel.



71.4478, 73.5243, 69.4574



66.0769, 73.5243, 75.6879



68.3405, 73.5243, 91.6802



73.8318, 73.5243, 84.5878

Rectangle

The Rectangle color scheme consists of four colors that form a rectangle on the color wheel.



71.4478, 73.5243, 69.4574



67.9298, 73.5243, 69.9661



68.3405, 73.5243, 91.6802



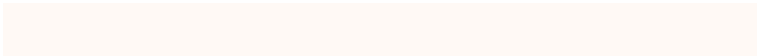
71.8726, 73.5243, 91.0710

Sweetspot

The Sweet Spot groups the original color and five complimentary colors.



71.4498, 73.5275, 69.4590



91.6823, 95.8231, 99.8897



70.2836, 67.8107, 79.5041



19.4915, 20.3453, 21.0291



0.0000, 0.0000, 0.0000



20.3446, 21.4041, 23.3091

Same Dimension

The Same Dimension uses a secret algorithm to generate beautiful new colors.



71.4498, 73.5275, 69.4590



83.1269, 85.0468, 77.5097



75.2972, 81.2223, 70.7414



15.6216, 16.1662, 15.8158



22.0242, 15.7426, 1.8778



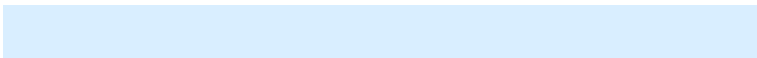
1.8242, 1.4257, 0.1790

Inverse Universe

The Inverse Universe completely reimagines the original color for something new.



67.2599, 72.0955, 89.7285



77.1212, 82.9938, 106.5624



63.6576, 64.8908, 88.5277



14.9200, 15.9265, 19.2100



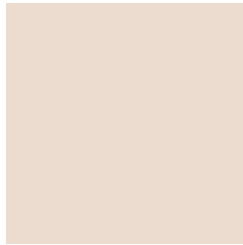
12.8896, 12.4262, 45.4621



1.1080, 1.1674, 3.6018

Previews

White Background



This preview shows how the XYZ color 71.4478, 73.5243, 69.4574 looks on a white background.

Color Contrast Check

Large Text (above 18pt) WCAG AA × Fail

Any Text WCAG AA × Fail

Large Text (above 18pt) WCAG AAA × Fail

Any Text WCAG AAA × Fail

Black Background



This preview shows how the XYZ color 71.4478, 73.5243, 69.4574 looks on a black background.

Color Contrast Check

Large Text (above 18pt) WCAG AA ✓ Pass

Any Text WCAG AA ✓ Pass

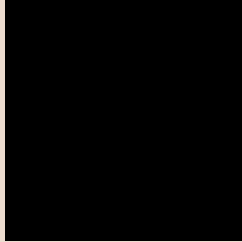
Large Text (above 18pt) WCAG AAA ✓ Pass

Any Text WCAG AAA ✓ Pass

If you want to check with other color combinations, try the [Color Contrast Checker](#).

XYZ 71.4478, 73.5243, 69.4574

Background



This preview shows how black text looks on a background with the XYZ color 71.4478, 73.5243, 69.4574.



This preview shows how white text looks on a background with the XYZ color 71.4478, 73.5243,

69.4574.

Color Blindness Simulation

Color vision deficiency is a very complex topic, and I could not describe the different causes any better than Wikipedia does, so if you want to learn more, you should check out their [article about color blindness](#).

Dichromacy



Original Color

71.4478, 73.5243, 69.4574

Protanopia

70.1396, 73.6196, 70.1878

Deuteranopia

75.1099, 73.4789, 69.8986



Tritanopia

75.1990, 73.5202, 87.3182

Trichromacy



Original Color

71.4478, 73.5243, 69.4574

Protanomaly

70.5203, 73.4228, 70.1297

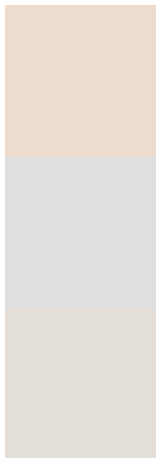
Deuteranomaly

73.8542, 73.5923, 69.9867

Tritanomaly

73.8640, 73.3582, 80.7875

Monochromacy



Original Color

71.4478, 73.5243, 69.4574

Achromatopsia

70.1384, 73.7910, 80.3584

Achromatomaly

70.6406, 73.7463, 76.1569

CSS Examples

Text

The CSS property to change the color of the text to XYZ 71.4478, 73.5243, 69.4574 is called "color". The color property can be set on classes, ids or directly on the HTML element.

This example shows how text in the color `rgb(236, 220, 207)` looks like.

```
.text, #text, p{  
    color:rgb(236, 220, 207)  
}
```

If you want to add a text shadow in that color use the text-shadow property, you can generate a text shadow directly with our [CSS Text Shadow Generator](#).

Here you see how black text with a 4 pixel rgb(236, 220, 207) colored shadow looks like.

```
.shadow{ text-shadow: 4px 4px 2px rgb(236, 220, 207) }
```

Border

The CSS property to change the border of an element to XYZ 71.4478, 73.5243, 69.4574 is called "border". The border property can be set on classes, ids or directly on the HTML element.

This example shows the color as border, it can be applied via the CSS property "border" or "border-color".

```
.border, #border, table{ border:4px solid rgb(236, 220, 207) }
```


If only the border color should be changed use the property `border-color`.

```
.border{ border-color:rgb(236, 220, 207) }
```

If you want to add a box shadow in that color use:

Here you see how a box with a 4 pixel `rgb(236, 220, 207)` colored shadow looks like.

```
.boxshadow{ -moz-box-shadow:4px 4px 4px  
4px rgb(236, 220, 207); -webkit-box-  
shadow:4px 4px 4px 4px rgb(236, 220, 207);  
box-shadow:4px 4px 4px 4px rgb(236, 220,  
207) }
```

Background

The CSS property to change the background color of an element to XYZ 71.4478, 73.5243, 69.4574 is called "background". The background property can be set on classes, ids or directly on the HTML element.

```
.background, #background, body{  
background: rgb(236, 220, 207) }
```

If only the background color should be changed can be used:

```
.background{ background-color: rgb(236,  
220, 207) }
```

This example shows the color as background, it is applied via the CSS property "background".

To optimize and compress your CSS code, you can use our [online CSS compressor and optimizer](#) based on csstidy. If you want to create a linear or radial gradient as background or border, check our [CSS Gradient Generator](#).

Hey! You found this booklet interesting? Support Converting Colors with the new Membership Option!

The pro membership hides all ads, plus gives you double the colors in the color bucket, and more awesome pro features!

[Learn more, Memberships starting at \\$2.50/m!](#)

**Follow me
on Twitter!**

@ConvertingColor