

Converting Colors

XYZ(71.3670, 69.9688, 73.3622)

Have a look what the booklet for
XYZ(71.3670, 69.9688, 73.3622)
contains.

XYZ(71.3670, 69.9688, 73.3622)	3
<i>Conversions</i>	4
<i>Details</i>	6
<i>Harmonies</i>	12
<i>Previews</i>	24
<i>Color Blindness Simulation</i>	28
<i>CSS Examples</i>	31

Color

**XYZ(71.3670, 69.9688,
73.3622)**

Conversions

Conversions Part 1

Format	Color
Hex	F0D3D6
RGB	240, 211, 214
RGB Percent	94%, 83%, 84%
CMY	0.0588, 0.1725, 0.1608
CMYK	0.00, 0.12, 0.11, 0.06
HSL	354°, 49%, 88%
HSV	354°, 12%, 94%
XYZ	71.3670, 69.9688, 73.3622
YIQ	220.0130, 16.3210, 7.0810

Conversions

Conversions Part 2

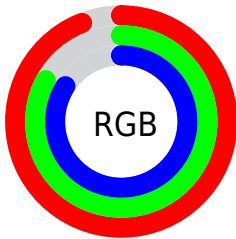
Format	Color
R _Y B	240, 211, 214
Decimal	15782870
CIE Lab	86.98, 10.57, 2.22
CIE LCh	87, 10.798, 11.863
Yxy	69.9688, 0.3324, 0.3259
Android (android.graphics.Color)	4293972950 (0xFFFF0D3D6)
YUV	220.0130, -2.9644, 17.5286
Hunter-Lab	83.6474, 5.9114, 6.5534

Details

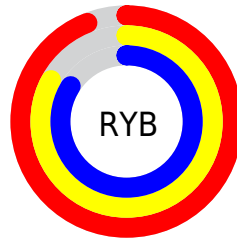
The XYZ color **71.3670, 69.9688, 73.3622** is a light color, and the websafe version is hex **FFCCCC**. A complement of this color would be **73.3128, 82.2852, 92.1433**, and the grayscale version is **68.0502, 71.5942, 77.9660**.

A 20% lighter version of the original color is **95.0500, 100.0000, 108.9000**, and **37.9136, 36.4705, 37.8421** is the 20% darker color. If you saturate the color by 10%, you get **63.2748, 57.8956, 57.9891**, and if you desaturate by 10%, it is **80.7164, 83.9738, 90.9475**.

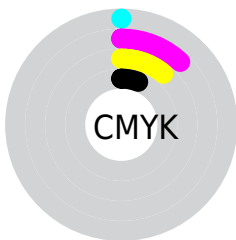
Distribution



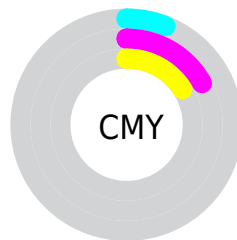
- Red (94%)
- Green (83%)
- Blue (84%)



- Red (94%)
- Yellow (83%)
- Blue (84%)



- Cyan (0%)
- Magenta (12%)
- Yellow (11%)
- Black (6%)



- Cyan (6%)
- Magenta (17%)
- Yellow (16%)

Brightness & Saturation Gradients

These gradients show how the XYZ color 71.3670, 69.9688, 73.3622 changes by changing the brightness by 10 percent. The first figure shows a shift by +10% for each color and the second figure -10%.

Similar to the brightness gradients but the following saturation gradients show a change of the XYZ color 71.3670, 69.9688, 73.3622 by changing the saturation by 10% instead.

71.3670, 69.9688,
73.3622

71.3670, 69.9688,
73.3622

454.5272,
460.4404, 491.3736

52.9254, 51.5011,
53.7786

120.1718,
119.1643, 125.7169

37.9704, 36.6076,
38.0327

151.2657,
150.6608, 159.3251

26.1368, 24.9038,
25.7060

187.3077,
187.2691, 198.4452

17.0593, 16.0054,
16.3801

228.6633,
229.3735, 243.4958

10.3723, 9.5280,
9.6362

275.6976,
277.3585, 294.8954

5.7107, 5.0871,
5.0560

328.7761,

2.7089, 2.2985,

331.6083, 353.0625

2.2208

388.2642,
392.5075, 418.4157

■ 1.0018, 0.7729,
0.6864

■ 0.0000, 0.0000,
0.0000

■ 71.3670, 69.9688,
73.3622

■ 71.3670, 69.9688,
73.3622

■ 63.2748, 57.8956,
57.9891

■ 80.7164, 83.9738,
90.9475

■ 56.3806, 47.6605,
44.7362

■ 89.7455, 97.2654,
108.6518

■ 50.6289, 39.1762,
33.5117

■ 45.9578, 32.3445,
24.2153

■ 42.2994, 27.0574,
16.7380

■ 39.5778, 23.1943,
10.9601

■ 37.7068, 20.6165,
6.7473

■ 36.5835, 19.1573,
3.9449

■ 36.1088, 18.5947,
2.5942

Harmonies

Analogous

The Analogous color harmony consists of three colors that are next to each other on the color wheel.



71.2230, 69.9688, 80.5934



71.3670, 69.9688, 73.3622



70.1837, 69.9688, 67.2793

Triad

The Triadic color harmony groups three colors that are evenly spaced from another and form a triangle on the color wheel.



71.3670, 69.9688, 73.3622



63.3166, 69.9688, 66.2941



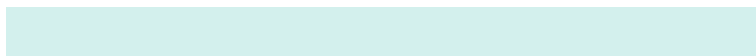
65.0039, 69.9688, 90.1716

Complementary

The Complementary color scheme is a pair of colors which are on the opposite of each other on the color wheel.



71.3670, 69.9688, 73.3622



73.3128, 82.2852, 92.1433

Split Complementary

Split-complementary colors differ from the complementary color scheme. The scheme consists of three colors, the original color and two neighbors of the complement color.



62.9538, 69.9688, 85.8419



71.3670, 69.9688, 73.3622



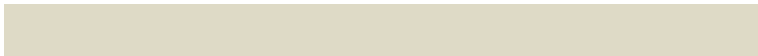
61.9967, 69.9688, 71.9387

Square

The Square scheme is like the rectangle color scheme, but the four colors are evenly spaced on the color wheel.



71.3670, 69.9688, 73.3622



65.5105, 69.9688, 63.3747



61.8656, 69.9688, 79.0775



67.5060, 69.9688, 90.6128

Rectangle

The Rectangle color scheme consists of four colors that form a rectangle on the color wheel.



71.3670, 69.9688, 73.3622



68.8184, 69.9688, 64.5725



61.8656, 69.9688, 79.0775



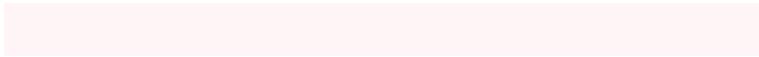
64.2406, 69.9688, 89.1105

Sweetspot

The Sweet Spot groups the original color and five complimentary colors.



71.3690, 69.9719, 73.3637



90.4441, 93.0887, 100.2722



73.8217, 70.8215, 92.2179



19.1791, 19.6554, 21.1252



0.0000, 0.0000, 0.0000



20.3446, 21.4041, 23.3091

Same Dimension

The Same Dimension uses a secret algorithm to generate beautiful new colors.



71.3690, 69.9719, 73.3637



79.9676, 77.4068, 80.5302



73.8474, 75.5355, 72.3194



15.8392, 15.7854, 16.7092



19.7888, 10.1879, 1.5382



1.6682, 0.8563, 0.2438

Inverse Universe

The Inverse Universe completely reimagines the original color for something new.



71.3690, 69.9719, 73.3637



79.9676, 77.4068, 80.5302



70.5817, 76.1167, 93.4107



15.8392, 15.7854, 16.7092



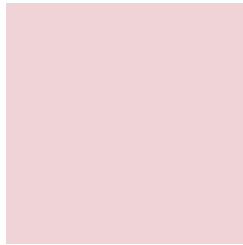
19.7888, 10.1879, 1.5382



1.6682, 0.8563, 0.2438

Previews

White Background



This preview shows how the XYZ color 71.3670, 69.9688, 73.3622 looks on a white background.

Color Contrast Check

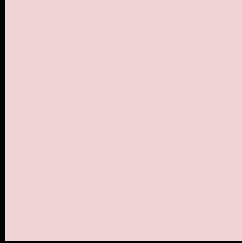
Large Text (above 18pt) WCAG AA × Fail

Any Text WCAG AA × Fail

Large Text (above 18pt) WCAG AAA × Fail

Any Text WCAG AAA × Fail

Black Background



This preview shows how the XYZ color 71.3670, 69.9688, 73.3622 looks on a black background.

Color Contrast Check

Large Text (above 18pt) WCAG AA ✓ Pass

Any Text WCAG AA ✓ Pass

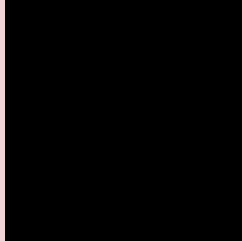
Large Text (above 18pt) WCAG AAA ✓ Pass

Any Text WCAG AAA ✓ Pass

If you want to check with other color combinations, try the [Color Contrast Checker](#).

XYZ 71.3670, 69.9688, 73.3622

Background



This preview shows how black text looks on a background with the XYZ color 71.3670, 69.9688, 73.3622.



This preview shows how white text looks on a background with the XYZ color 71.3670, 69.9688,

73.3622.

Color Blindness Simulation

Color vision deficiency is a very complex topic, and I could not describe the different causes any better than Wikipedia does, so if you want to learn more, you should check out their [article about color blindness](#).

Dichromacy



Original Color

71.3670, 69.9688, 73.3622

Protanopia

67.4614, 70.1651, 75.6333

Deuteranopia

71.3670, 69.9688, 73.3622



Tritanopia

73.1459, 69.9692, 81.6017

Trichromacy



Original Color

71.3670, 69.9688, 73.3622

Protanomaly

69.0082, 70.2168, 74.8818

Deuteranomaly

71.3670, 69.9688, 73.3622

Tritanomaly

72.5070, 70.0679, 78.8102

Monochromacy



Original Color

71.3670, 69.9688, 73.3622

Achromatopsia

68.0267, 71.5694, 77.9390

Achromatomaly

69.1463, 71.0186, 76.3932

CSS Examples

Text

The CSS property to change the color of the text to XYZ 71.3670, 69.9688, 73.3622 is called "color". The color property can be set on classes, ids or directly on the HTML element.

This example shows how text in the color rgb(240, 211, 214) looks like.

```
.text, #text, p{  
    color:rgb(240, 211, 214)  
}
```

If you want to add a text shadow in that color use the text-shadow property, you can generate a text shadow directly with our [CSS Text Shadow Generator](#).

Here you see how black text with a 4 pixel rgb(240, 211, 214) colored shadow looks like.

```
.shadow{ text-shadow: 4px 4px 2px rgb(240, 211, 214) }
```

Border

The CSS property to change the border of an element to XYZ 71.3670, 69.9688, 73.3622 is called "border". The border property can be set on classes, ids or directly on the HTML element.

This example shows the color as border, it can be applied via the CSS property "border" or "border-color".

```
.border, #border, table{ border:4px solid rgb(240, 211, 214) }
```


If only the border color should be changed use the property `border-color`.

```
.border{ border-color:rgb(240, 211, 214) }
```

If you want to add a box shadow in that color use:

Here you see how a box with a 4 pixel `rgb(240, 211, 214)` colored shadow looks like.

```
.boxshadow{ -moz-box-shadow:4px 4px 4px  
4px rgb(240, 211, 214); -webkit-box-  
shadow:4px 4px 4px 4px rgb(240, 211, 214);  
box-shadow:4px 4px 4px 4px rgb(240, 211,  
214) }
```

Background

The CSS property to change the background color of an element to XYZ 71.3670, 69.9688, 73.3622 is called "background". The background property can be set on classes, ids or directly on the HTML element.

```
.background, #background, body{  
background: rgb(240, 211, 214) }
```

If only the background color should be changed can be used:

```
.background{ background-color: rgb(240,  
211, 214) }
```

This example shows the color as background, it is applied via the CSS property "background".

To optimize and compress your CSS code, you can use our [online CSS compressor and optimizer](#) based on csstidy. If you want to create a linear or radial gradient as background or border, check our [CSS Gradient Generator](#).

Hey! You found this booklet interesting? Support Converting Colors with the new Membership Option!

The pro membership hides all ads, plus gives you double the colors in the color bucket, and more awesome pro features!

[Learn more, Memberships starting at \\$2.50/m!](#)

**Follow me
on Twitter!**

@ConvertingColor