

Converting Colors

XYZ(71.6208, 71.6802, 69.7354)

Have a look what the booklet for XYZ(71.6208, 71.6802, 69.7354) contains.

- XYZ(71.6208, 71.6802, 69.7354) 3**
- Conversions* 4**
- Details* 6**
- Harmonies* 12**
- Previews* 24**
- Color Blindness Simulation* 28**
- CSS Examples* 31**

Color

**XYZ(71.6208, 71.6802,
69.7354)**

Conversions

Conversions Part 1

Format	Color
Hex	F0D7D0
RGB	240, 215, 208
RGB Percent	94%, 84%, 82%
CMY	0.0588, 0.1568, 0.1843
CMYK	0.00, 0.10, 0.13, 0.06
HSL	13°, 52%, 88%
HSV	13°, 13%, 94%
XYZ	71.6208, 71.6802, 69.7354
YIQ	221.6770, 17.1470, 3.1230

Conversions

Conversions Part 2

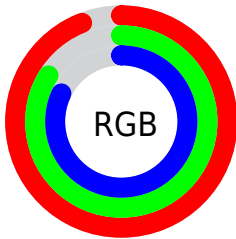
Format	Color
RYB	240, 217, 208
Decimal	15783888
CIELab	87.81, 7.52, 6.59
CIELCh	88, 9.999, 41.263
Yxy	71.6802, 0.3362, 0.3365
Android (android.graphics.Color)	4293973968 (0xFFFF0D7D0)
YUV	221.6770, -6.7428, 16.0693
Hunter-Lab	84.6642, 2.8380, 10.4295

Details

The XYZ color **71.6208, 71.6802, 69.7354** is a light color, and the websafe version is hex **FFCCCC**. A complement of this color would be **70.8792, 77.9775, 93.7542**, and the grayscale version is **69.2425, 72.8486, 79.3321**.

A 20% lighter version of the original color is **95.0500, 100.0000, 108.9000**, and **38.1707, 37.6651, 35.8301** is the 20% darker color. If you saturate the color by 10%, you get **64.3858, 61.5829, 53.8415**, and if you desaturate by 10%, it is **79.8537, 83.0566, 88.1680**.

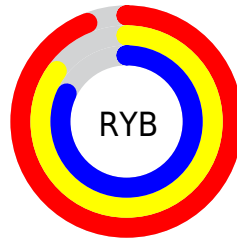
Distribution



Red (94%)

Green (84%)

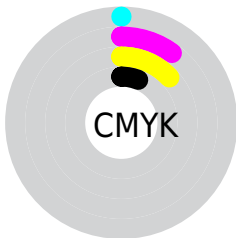
Blue (82%)



Red (94%)

Yellow (85%)

Blue (82%)

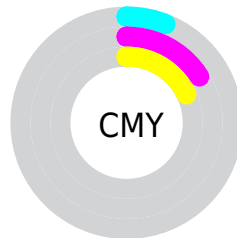


Cyan (0%)

Magenta (10%)

Yellow (13%)

Black (6%)



Cyan (6%)

Magenta (16%)

Yellow (18%)

Brightness & Saturation Gradients

These gradients show how the XYZ color 71.6208, 71.6802, 69.7354 changes by changing the brightness by 10 percent. The first figure shows a shift by +10% for each color and the second figure -10%.

Similar to the brightness gradients but the following saturation gradients show a change of the XYZ color 71.6208, 71.6802, 69.7354 by changing the saturation by 10% instead.

71.6208, 71.6802,
69.7354

71.6208, 71.6802,
69.7354

455.3988,
466.4277, 478.3844

53.1333, 52.8975,
50.8354

120.5310,
121.6017, 120.5089

38.1371, 37.7209,
35.7018

151.6844,
153.5094, 153.2195

26.2668, 25.7662,
23.9161

187.7905,
190.5607, 191.3707

17.1571, 16.6488,
15.0598

229.2146,
233.1403, 235.3810

10.4426, 9.9844,
8.7143

276.3222,
281.6323, 285.6690

5.7579, 5.3886,
4.4610

329.4785,

2.7377, 2.4770,

336.4213, 342.6532

1.8815

389.0489,
397.8917, 406.7521

■ 1.0166, 0.8651,
0.4809

■ 0.0000, 0.0000,
0.0000

■ 71.6208, 71.6802,
69.7354

■ 71.6208, 71.6802,
69.7354

■ 64.3858, 61.5829,
53.8415

■ 79.8537, 83.0566,
88.1680

■ 58.1043, 52.7105,
40.3701

■ 88.9530, 95.6804,
108.3876

■ 52.7373, 45.0186,
29.2030

■ 89.7455, 97.2654,
108.6518

■ 48.2410, 38.4568,
20.2099

■ 44.5674, 32.9708,
13.2478

■ 41.6640, 28.5018,
8.1561

■ 39.4716, 24.9848,
4.7497

■ 37.9211, 22.3470,
2.8050

■ 37.1874, 21.0292,
2.0990

Harmonies

Analogous

The Analogous color harmony consists of three colors that are next to each other on the color wheel.



72.7077, 71.6802, 75.5208



71.6208, 71.6802, 69.7354



69.6075, 71.6802, 66.3050

Triad

The Triadic color harmony groups three colors that are evenly spaced from another and form a triangle on the color wheel.



71.6208, 71.6802, 69.7354



63.8958, 71.6802, 73.9210



69.0257, 71.6802, 91.5906

Complementary

The Complementary color scheme is a pair of colors which are on the opposite of each other on the color wheel.



71.6208, 71.6802, 69.7354



70.8792, 77.9775, 93.7542

Split Complementary

Split-complementary colors differ from the complementary color scheme. The scheme consists of three colors, the original color and two neighbors of the complement color.



66.6734, 71.6802, 91.1005



71.6208, 71.6802, 69.7354



63.7483, 71.6802, 80.6301

Square

The Square scheme is like the rectangle color scheme, but the four colors are evenly spaced on the color wheel.



71.6208, 71.6802, 69.7354



65.1621, 71.6802, 68.6229



64.7543, 71.6802, 86.9953



71.1864, 71.6802, 88.2978

Rectangle

The Rectangle color scheme consists of four colors that form a rectangle on the color wheel.



71.6208, 71.6802, 69.7354



68.0293, 71.6802, 65.6880



64.7543, 71.6802, 86.9953



68.2306, 71.6802, 91.8676

Sweetspot

The Sweet Spot groups the original color and five complimentary colors.



71.6228, 71.6834, 69.7369



90.9616, 94.3818, 99.6495



73.2094, 69.5250, 86.7027



19.3095, 19.9813, 20.9684



0.0000, 0.0000, 0.0000



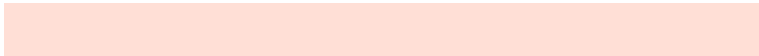
20.3446, 21.4041, 23.3091

Same Dimension

The Same Dimension uses a secret algorithm to generate beautiful new colors.



71.6228, 71.6834, 69.7369



79.8257, 78.9703, 74.7879



75.8784, 80.1947, 71.1555



16.0533, 16.3197, 16.4536



20.4366, 11.6712, 1.1756



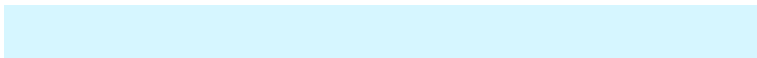
1.7714, 1.1134, 0.1215

Inverse Universe

The Inverse Universe completely reimagines the original color for something new.



70.8792, 77.9775, 93.7542



78.8169, 87.5001, 107.3429



66.5716, 69.3623, 92.3184



15.9367, 17.3076, 20.2223



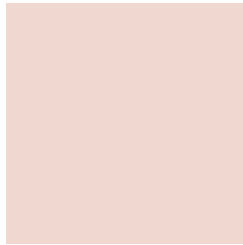
18.4944, 23.2131, 48.6337



1.6103, 2.0745, 4.0698

Previews

White Background



This preview shows how the XYZ color 71.6208, 71.6802, 69.7354 looks on a white background.

Color Contrast Check

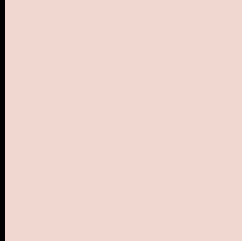
Large Text (above 18pt) WCAG AA × Fail

Any Text WCAG AA × Fail

Large Text (above 18pt) WCAG AAA × Fail

Any Text WCAG AAA × Fail

Black Background



This preview shows how the XYZ color 71.6208, 71.6802, 69.7354 looks on a black background.

Color Contrast Check

Large Text (above 18pt) WCAG AA ✓ Pass

Any Text WCAG AA ✓ Pass

Large Text (above 18pt) WCAG AAA ✓ Pass

Any Text WCAG AAA ✓ Pass

If you want to check with other color combinations, try the [Color Contrast Checker](#).

XYZ 71.6208, 71.6802, 69.7354

Background



This preview shows how black text looks on a background with the XYZ color 71.6208, 71.6802, 69.7354.



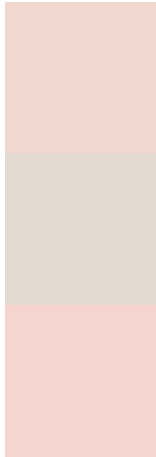
This preview shows how white text looks on a background with the XYZ color 71.6208, 71.6802,

69.7354.

Color Blindness Simulation

Color vision deficiency is a very complex topic, and I could not describe the different causes any better than Wikipedia does, so if you want to learn more, you should check out their [article about color blindness](#).

Dichromacy



Original Color

71.6208, 71.6802, 69.7354

Protanopia

68.6429, 71.6471, 71.1842

Deuteranopia

73.1855, 71.7354, 69.6635



Tritanopia

74.5092, 71.7431, 83.3195

Trichromacy



Original Color

71.6208, 71.6802, 69.7354

Protanomaly

69.8587, 71.9021, 70.5181

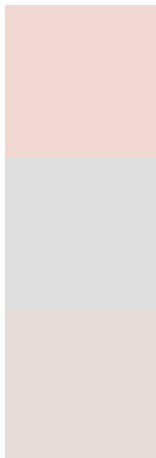
Deuteranomaly

72.7400, 71.8803, 69.7150

Tritanomaly

73.4633, 71.6862, 78.3715

Monochromacy



Original Color

71.6208, 71.6802, 69.7354

Achromatopsia

69.4303, 73.0461, 79.5472

Achromatomaly

70.1690, 72.3308, 75.9086

CSS Examples

Text

The CSS property to change the color of the text to XYZ 71.6208, 71.6802, 69.7354 is called "color". The color property can be set on classes, ids or directly on the HTML element.

This example shows how text in the color rgb(240, 215, 208) looks like.

```
.text, #text, p{  
    color:rgb(240, 215, 208)  
}
```

If you want to add a text shadow in that color use the text-shadow property, you can generate a text shadow directly with our [CSS Text Shadow Generator](#).

Here you see how black text with a 4 pixel rgb(240, 215, 208) colored shadow looks like.

```
.shadow{ text-shadow: 4px 4px 2px rgb(240, 215, 208) }
```

Border

The CSS property to change the border of an element to XYZ 71.6208, 71.6802, 69.7354 is called "border". The border property can be set on classes, ids or directly on the HTML element.

This example shows the color as border, it can be applied via the CSS property "border" or "border-color".

```
.border, #border, table{ border:4px solid rgb(240, 215, 208) }
```


If only the border color should be changed use the property `border-color`.

```
.border{ border-color:rgb(240, 215, 208) }
```

If you want to add a box shadow in that color use:

Here you see how a box with a 4 pixel `rgb(240, 215, 208)` colored shadow looks like.

```
.boxshadow{ -moz-box-shadow:4px 4px 4px  
4px rgb(240, 215, 208); -webkit-box-  
shadow:4px 4px 4px 4px rgb(240, 215, 208);  
box-shadow:4px 4px 4px 4px rgb(240, 215,  
208) }
```

Background

The CSS property to change the background color of an element to XYZ 71.6208, 71.6802, 69.7354 is called "background". The background property can be set on classes, ids or directly on the HTML element.

```
.background, #background, body{  
background: rgb(240, 215, 208) }
```

If only the background color should be changed can be used:

```
.background{ background-color: rgb(240,  
215, 208) }
```

This example shows the color as background, it is applied via the CSS property "background".

To optimize and compress your CSS code, you can use our [online CSS compressor and optimizer](#) based on csstidy. If you want to create a linear or radial gradient as background or border, check our [CSS Gradient Generator](#).

Hey! You found this booklet interesting? Support Converting Colors with the new Membership Option!

The pro membership hides all ads, plus gives you double the colors in the color bucket, and more awesome pro features!

[Learn more, Memberships starting at \\$2.50/m!](#)

**Follow me
on Twitter!**

@ConvertingColor