

Converting Colors

XYZ(71.6366, 71.8881, 72.8677)

Have a look what the booklet for
XYZ(71.6366, 71.8881, 72.8677)
contains.

| | |
|--|----|
| XYZ(71.8260, 72.0930, 73.0805) | 3 |
| <i>Conversions</i> | 4 |
| <i>Details</i> | 6 |
| <i>Harmonies</i> | 12 |
| <i>Previews</i> | 24 |
| <i>Color Blindness Simulation</i> | 28 |
| <i>CSS Examples</i> | 31 |

Color

**XYZ(71.8260, 72.0930,
73.0805)**

Conversions

Conversions Part 1

| Format | Color |
|-------------|---------------------------|
| Hex | EED8D5 |
| RGB | 238, 216, 213 |
| RGB Percent | 93%, 85%, 84% |
| CMY | 0.0667, 0.1529, 0.1647 |
| CMYK | 0.00, 0.09, 0.11, 0.07 |
| HSL | 7°, 42%, 88% |
| HSV | 7°, 11%, 93% |
| XYZ | 71.8260, 72.0930, 73.0805 |
| YIQ | 222.2360, 14.0750, 3.7310 |

Conversions

Conversions Part 2

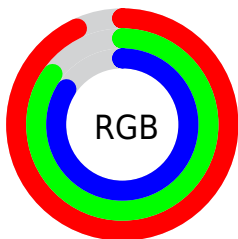
| Format | Color |
|-------------------------------------|-------------------------------|
| R _Y B | 238, 216, 213 |
| Decimal | 15653077 |
| CIE Lab | 88.01, 7.09, 4.22 |
| CIE LCh | 88, 8.255, 30.773 |
| Yxy | 72.0930, 0.3310, 0.3322 |
| Android (android.graphics.Color) | 4293843157 (0xFFEED8D5) |
| YUV | 222.2360, -4.5533, 13.8250 |
| Hunter-Lab | 84.9076, 2.4105, 8.4040 |

Details

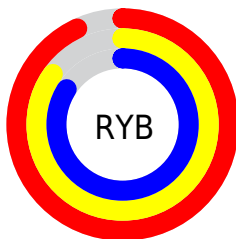
The XYZ color **71.8260, 72.0930, 73.0805** is a light color, and the websafe version is hex **CCCCCC**. A complement of this color would be **72.5812, 79.7343, 92.4545**, and the grayscale version is **69.6238, 73.2497, 79.7689**.

A 20% lighter version of the original color is **95.0500, 100.0000, 108.9000**, and **38.2078, 37.9034, 37.6501** is the 20% darker color. If you saturate the color by 10%, you get **63.9973, 60.9199, 56.6445**, and if you desaturate by 10%, it is **80.7858, 84.8171, 92.0824**.

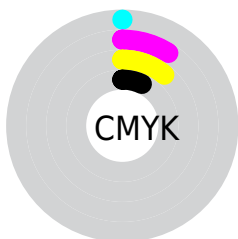
Distribution



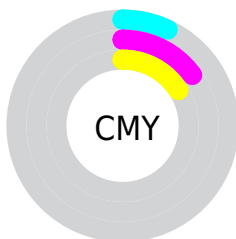
- Red (93%)
- Green (85%)
- Blue (84%)



- Red (93%)
- Yellow (85%)
- Blue (84%)



- Cyan (0%)
- Magenta (9%)
- Yellow (11%)
- Black (7%)



- Cyan (7%)
- Magenta (15%)
- Yellow (16%)

Brightness & Saturation Gradients

These gradients show how the XYZ color 71.8260, 72.0930, 73.0805 changes by changing the brightness by 10 percent. The first figure shows a shift by +10% for each color and the second figure -10%.

Similar to the brightness gradients but the following saturation gradients show a change of the XYZ color 71.8260, 72.0930, 73.0805 by changing the saturation by 10% instead.

71.8260, 72.0930,
73.0805

71.8260, 72.0930,
73.0805

456.1028,
467.8652, 490.3720

53.3015, 53.2347,
53.5496

120.8213,
122.1887, 125.3135

38.2720, 37.9901,
37.8509

152.0227,
154.1949, 158.8526

26.3720, 25.9750,
25.5661

188.1806,
191.3525, 197.8981

17.2363, 16.8050,
16.2765

229.6601,
234.0459, 242.8687

10.4994, 10.0955,
9.5635

276.8268,
282.6595, 294.1829

5.7961, 5.4623,
5.0087

330.0459,

2.7610, 2.5210,

337.5776, 352.2591

2.1936

389.6828,
399.1847, 417.5160

■ 1.0287, 0.8871,
0.6706

■ 0.0000, 0.0000,
0.0000

■ 71.8260, 72.0930,
73.0805

■ 71.8260, 72.0930,
73.0805

■ 63.9973, 60.9199,
56.6445

■ 80.7858, 84.8171,
92.0824

■ 57.2487, 51.2293,
42.6601

■ 89.0702, 96.9173,
108.6202

■ 51.5345, 42.9617,
31.0108

■ 46.8031, 36.0499,
21.5692

■ 42.9985, 30.4212,
14.1955

■ 40.0592, 25.9963,
8.7341

■ 37.9157, 22.6866,
5.0070

■ 36.4878, 20.3914,
2.8026

■ 35.6899, 19.0366,
1.7934

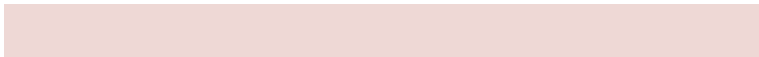
Harmonies

Analogous

The Analogous color harmony consists of three colors that are next to each other on the color wheel.



72.3770, 72.0930, 78.3508



71.8260, 72.0930, 73.0805



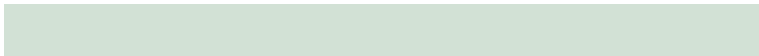
70.3870, 72.0930, 69.4121

Triad

The Triadic color harmony groups three colors that are evenly spaced from another and form a triangle on the color wheel.



71.8260, 72.0930, 73.0805



65.2719, 72.0930, 73.3223



68.5733, 72.0930, 89.8424

Complementary

The Complementary color scheme is a pair of colors which are on the opposite of each other on the color wheel.



71.8260, 72.0930, 73.0805



72.5812, 79.7343, 92.4545

Split Complementary

Split-complementary colors differ from the complementary color scheme. The scheme consists of three colors, the original color and two neighbors of the complement color.



66.6907, 72.0930, 88.3420



71.8260, 72.0930, 73.0805



64.8069, 72.0930, 78.6434

Square

The Square scheme is like the rectangle color scheme, but the four colors are evenly spaced on the color wheel.



71.8260, 72.0930, 73.0805



66.6039, 72.0930, 69.5469



65.3214, 72.0930, 84.1748



70.4771, 72.0930, 88.1839

Rectangle

The Rectangle color scheme consists of four colors that form a rectangle on the color wheel.



71.8260, 72.0930, 73.0805



69.1309, 72.0930, 68.2762



65.3214, 72.0930, 84.1748



67.9171, 72.0930, 89.6901

Sweetspot

The Sweet Spot groups the original color and five complimentary colors.



71.8280, 72.0962, 73.0820



91.7328, 95.2976, 101.8386



74.0624, 71.7696, 88.6106



19.4493, 20.1347, 21.4039



0.0000, 0.0000, 0.0000



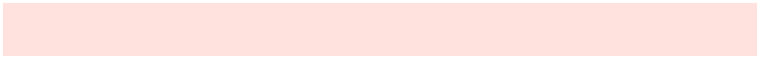
20.3446, 21.4041, 23.3091

Same Dimension

The Same Dimension uses a secret algorithm to generate beautiful new colors.



71.8280, 72.0962, 73.0820



81.5559, 80.8282, 80.3048



75.1292, 78.6985, 74.1824



15.9258, 16.0647, 16.4111



19.9596, 10.7173, 1.0167



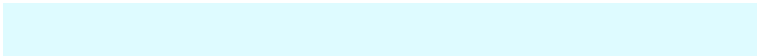
1.7097, 0.9900, 0.1010

Inverse Universe

The Inverse Universe completely reimagines the original color for something new.



72.5812, 79.7343, 92.4545



82.6305, 91.7305, 107.9584



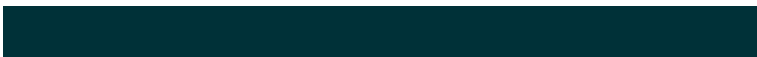
69.1506, 72.8731, 91.3110



16.0758, 17.5857, 20.2687



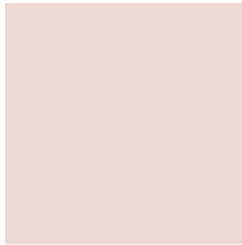
21.4487, 29.1216, 49.6184



1.8296, 2.5132, 4.1429

Previews

White Background



This preview shows how the XYZ color 71.8260, 72.0930, 73.0805 looks on a white background.

Color Contrast Check

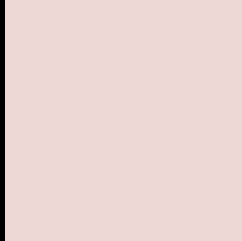
Large Text (above 18pt) WCAG AA × Fail

Any Text WCAG AA × Fail

Large Text (above 18pt) WCAG AAA × Fail

Any Text WCAG AAA × Fail

Black Background



This preview shows how the XYZ color 71.8260, 72.0930, 73.0805 looks on a black background.

Color Contrast Check

Large Text (above 18pt) WCAG AA ✓ Pass

Any Text WCAG AA ✓ Pass

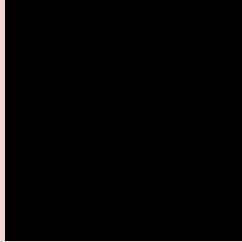
Large Text (above 18pt) WCAG AAA ✓ Pass

Any Text WCAG AAA ✓ Pass

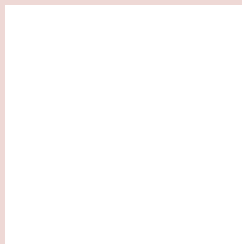
If you want to check with other color combinations, try the [Color Contrast Checker](#).

XYZ 71.8260, 72.0930, 73.0805

Background



This preview shows how black text looks on a background with the XYZ color 71.8260, 72.0930, 73.0805.

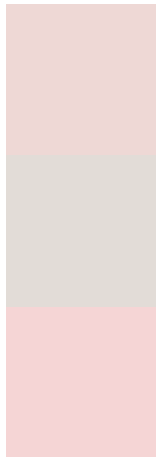


This preview shows how white text looks on a background with the XYZ color 71.8260, 72.0930,

Color Blindness Simulation

Color vision deficiency is a very complex topic, and I could not describe the different causes any better than Wikipedia does, so if you want to learn more, you should check out their [article about color blindness](#).

Dichromacy



Original Color

71.8260, 72.0930, 73.0805

Protanopia

69.2230, 72.2614, 74.5894

Deuteranopia

73.4607, 71.8051, 72.9388



Tritanopia

74.0124, 71.8269, 84.8260

Trichromacy



Original Color

71.8260, 72.0930, 73.0805

Protanomaly

70.1022, 72.3411, 73.8868

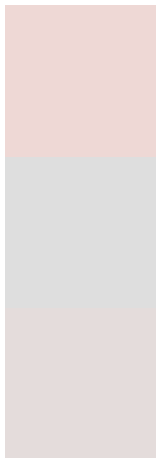
Deuteranomaly

72.6748, 71.7745, 72.9743

Tritanomaly

73.0977, 71.8257, 80.5321

Monochromacy



Original Color

71.8260, 72.0930, 73.0805

Achromatopsia

69.4303, 73.0461, 79.5472

Achromatomaly

70.3743, 72.7949, 77.3595

CSS Examples

Text

The CSS property to change the color of the text to XYZ 71.8260, 72.0930, 73.0805 is called "color". The color property can be set on classes, ids or directly on the HTML element.

This example shows how text in the color rgb(238, 216, 213) looks like.

```
.text, #text, p{  
    color:rgb(238, 216, 213)  
}
```

If you want to add a text shadow in that color use the text-shadow property, you can generate a text shadow directly with our [CSS Text Shadow Generator](#).

Here you see how black text with a 4 pixel rgb(238, 216, 213) colored shadow looks like.

```
.shadow{ text-shadow: 4px 4px 2px rgb(238, 216, 213) }
```

Border

The CSS property to change the border of an element to XYZ 71.8260, 72.0930, 73.0805 is called "border". The border property can be set on classes, ids or directly on the HTML element.

This example shows the color as border, it can be applied via the CSS property "border" or "border-color".

```
.border, #border, table{ border:4px solid rgb(238, 216, 213) }
```


If only the border color should be changed use the property border-color.

```
.border{ border-color:rgb(238, 216, 213) }
```

If you want to add a box shadow in that color use:

Here you see how a box with a 4 pixel rgb(238, 216, 213) colored shadow looks like.

```
.boxshadow{ -moz-box-shadow:4px 4px 4px  
4px rgb(238, 216, 213); -webkit-box-  
shadow:4px 4px 4px 4px rgb(238, 216, 213);  
box-shadow:4px 4px 4px 4px rgb(238, 216,  
213) }
```

Background

The CSS property to change the background color of an element to XYZ 71.8260, 72.0930, 73.0805 is called "background". The background property can be set on classes, ids or directly on the HTML element.

```
.background, #background, body{  
background: rgb(238, 216, 213) }
```

If only the background color should be changed can be used:

```
.background{ background-color: rgb(238,  
216, 213) }
```

This example shows the color as background, it is applied via the CSS property "background".

To optimize and compress your CSS code, you can use our [online CSS compressor and optimizer](#) based on csstidy. If you want to create a linear or radial gradient as background or border, check our [CSS Gradient Generator](#).

Hey! You found this booklet interesting? Support Converting Colors with the new Membership Option!

The pro membership hides all ads, plus gives you double the colors in the color bucket, and more awesome pro features!

[Learn more, Memberships starting at \\$2.50/m!](#)

**Follow me
on Twitter!**

@ConvertingColor