

Converting Colors

XYZ(71.7727, 71.3408, 75.0536)

Have a look what the booklet for
XYZ(71.7727, 71.3408, 75.0536)
contains.

XYZ(71.7011, 71.2281, 74.9351)	3
<i>Conversions</i>	4
<i>Details</i>	6
<i>Harmonies</i>	12
<i>Previews</i>	24
<i>Color Blindness Simulation</i>	28
<i>CSS Examples</i>	31

Color

**XYZ(71.7011, 71.2281,
74.9351)**

Conversions

Conversions Part 1

Format	Color
Hex	EED6D8
RGB	238, 214, 216
RGB Percent	93%, 84%, 85%
CMY	0.0667, 0.1608, 0.1529
CMYK	0.00, 0.10, 0.09, 0.07
HSL	355°, 41%, 89%
HSV	355°, 10%, 93%
XYZ	71.7011, 71.2281, 74.9351
YIQ	221.4040, 13.6620, 5.7100

Conversions

Conversions Part 2

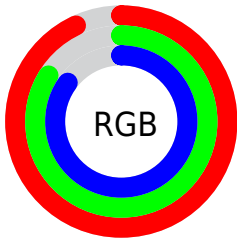
Format	Color
R _Y B	238, 214, 216
Decimal	15652568
CIE Lab	87.60, 8.63, 2.03
CIE LCh	88, 8.865, 13.268
Yxy	71.2281, 0.3291, 0.3269
Android (android.graphics.Color)	4293842648 (0xFFEED6D8)
YUV	221.4040, -2.6642, 14.5547
Hunter-Lab	84.3967, 3.9543, 6.4347

Details

The XYZ color **71.7011, 71.2281, 74.9351** is a light color, and the websafe version is hex **CCCCCC**. A complement of this color would be **73.4491, 81.5031, 91.2213**, and the grayscale version is **69.0242, 72.6188, 79.0819**.

A 20% lighter version of the original color is **95.0500, 100.0000, 108.9000**, and **38.1226, 37.3146, 38.9114** is the 20% darker color. If you saturate the color by 10%, you get **63.4762, 58.9965, 59.1875**, and if you desaturate by 10%, it is **81.1847, 85.3759, 92.9521**.

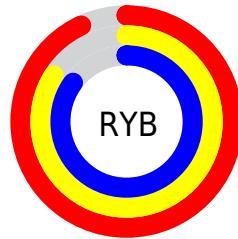
Distribution



Red (93%)

Green (84%)

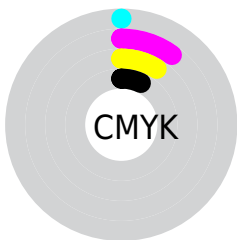
Blue (85%)



Red (93%)

Yellow (84%)

Blue (85%)

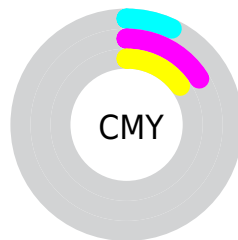


Cyan (0%)

Magenta (10%)

Yellow (9%)

Black (7%)



Cyan (7%)


Magenta (16%)


Yellow (15%)

Brightness & Saturation Gradients


These gradients show how the XYZ color 71.7011, 71.2281, 74.9351 changes by changing the brightness by 10 percent. The first figure shows a shift by +10% for each color and the second figure -10%.

Similar to the brightness gradients but the following saturation gradients show a change of the XYZ color 71.7011, 71.2281, 74.9351 by changing the saturation by 10% instead.


 71.7011, 71.2281,
74.9351

 71.7011, 71.2281,
74.9351


455.6744,
464.8504, 496.9439

 53.1991, 52.5284,
55.0583


120.6446,
120.9585, 127.9667

 38.1899, 37.4264,
39.0495

151.8168,
152.7579, 161.9587

 26.3080, 25.5378,
26.4901


187.9432,
189.6926, 201.4927

 17.1881, 16.4782,
16.9616

229.3890,
232.1471, 246.9875

 10.4648, 9.8632,
10.0455

276.5197,
280.5058, 298.8614

 5.7728, 5.3083,
5.3231

329.7006,

 2.7468, 2.4293,

335.1529, 357.5331

2.3760

389.2970,
396.4730, 423.4211

■ 1.0213, 0.8409,
0.7733

■ 0.0000, 0.0000,
0.0000

■ 71.7011, 71.2281,
74.9351

■ 71.7011, 71.2281,
74.9351

■ 63.4762, 58.9965,
59.1875

■ 81.1847, 85.3759,
92.9521

■ 56.4514, 48.5898,
45.6150

■ 89.0702, 96.9173,
108.6202

■ 50.5722, 39.9234,
34.1233

■ 45.7777, 32.9022,
24.6094

■ 42.0015, 27.4221,
16.9614

■ 39.1694, 23.3670,
11.0566

■ 37.1975, 20.6047,
6.7572

■ 35.9867, 18.9776,
3.9045

■ 35.3847, 18.2271,
2.3056

Harmonies

Analogous

The Analogous color harmony consists of three colors that are next to each other on the color wheel.



71.6356, 71.2281, 80.9277



71.7011, 71.2281, 74.9351



70.6789, 71.2281, 69.9064

Triad

The Triadic color harmony groups three colors that are evenly spaced from another and form a triangle on the color wheel.



71.7011, 71.2281, 74.9351



64.9739, 71.2281, 69.4467



66.5459, 71.2281, 89.1483

Complementary

The Complementary color scheme is a pair of colors which are on the opposite of each other on the color wheel.



71.7011, 71.2281, 74.9351



73.4491, 81.5031, 91.2213

Split Complementary

Split-complementary colors differ from the complementary color scheme. The scheme consists of three colors, the original color and two neighbors of the complement color.



64.8063, 71.2281, 85.7427



71.7011, 71.2281, 74.9351



63.9116, 71.2281, 74.2779

Square

The Square scheme is like the rectangle color scheme, but the four colors are evenly spaced on the color wheel.



71.7011, 71.2281, 74.9351



66.7790, 71.2281, 66.8498



63.8509, 71.2281, 80.2359



68.6298, 71.2281, 89.3468

Rectangle

The Rectangle color scheme consists of four colors that form a rectangle on the color wheel.



71.7011, 71.2281, 74.9351



69.5302, 71.2281, 67.6920



63.8509, 71.2281, 80.2359



65.9025, 71.2281, 88.3330

Sweetspot

The Sweet Spot groups the original color and five complimentary colors.



71.7031, 71.2312, 74.9366



91.5491, 94.7723, 102.2635



74.0733, 72.1022, 90.9028



19.4000, 19.9937, 21.5179



0.0000, 0.0000, 0.0000



20.3446, 21.4041, 23.3091

Same Dimension

The Same Dimension uses a secret algorithm to generate beautiful new colors.



71.7031, 71.2312, 74.9366



81.8609, 80.3296, 83.8241



74.0552, 76.3459, 74.4552



15.8262, 15.7802, 16.6408



19.7596, 10.1763, 1.3849



1.6620, 0.8539, 0.2112

Inverse Universe

The Inverse Universe completely reimagines the original color for something new.



71.7031, 71.2312, 74.9366



81.8609, 80.3296, 83.8241



70.9102, 75.9585, 91.8138



15.8262, 15.7802, 16.6408



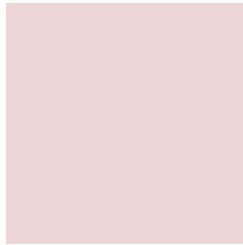
19.7596, 10.1763, 1.3849



1.6620, 0.8539, 0.2112

Previews

White Background



This preview shows how the XYZ color 71.7011, 71.2281, 74.9351 looks on a white background.

Color Contrast Check

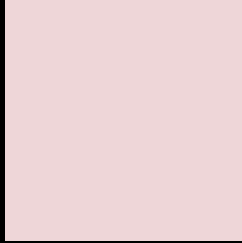
Large Text (above 18pt) WCAG AA × Fail

Any Text WCAG AA × Fail

Large Text (above 18pt) WCAG AAA × Fail

Any Text WCAG AAA × Fail

Black Background



This preview shows how the XYZ color 71.7011, 71.2281, 74.9351 looks on a black background.

Color Contrast Check

Large Text (above 18pt) WCAG AA ✓ Pass

Any Text WCAG AA ✓ Pass

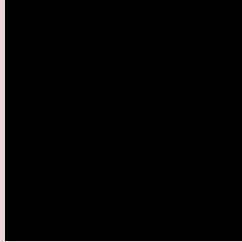
Large Text (above 18pt) WCAG AAA ✓ Pass

Any Text WCAG AAA ✓ Pass

If you want to check with other color combinations, try the [Color Contrast Checker](#).

XYZ 71.7011, 71.2281, 74.9351

Background



This preview shows how black text looks on a background with the XYZ color 71.7011, 71.2281, 74.9351.



This preview shows how white text looks on a background with the XYZ color 71.7011, 71.2281,

74.9351.

Color Blindness Simulation

Color vision deficiency is a very complex topic, and I could not describe the different causes any better than Wikipedia does, so if you want to learn more, you should check out their [article about color blindness](#).

Dichromacy



Original Color

71.7011, 71.2281, 74.9351

Protanopia

68.8582, 71.6248, 77.2136

Deuteranopia

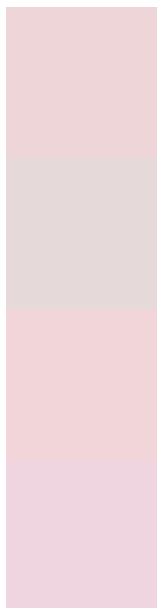
72.8069, 71.4236, 74.9145



Tritanopia

73.6215, 71.2694, 84.0048

Trichromacy



Original Color

71.7011, 71.2281, 74.9351

Protanomaly

69.7808, 71.3457, 76.4229

Deuteranomaly

72.4645, 71.2471, 74.8985

Tritanomaly

72.8454, 71.3210, 80.4480

Monochromacy



Original Color

71.7011, 71.2281, 74.9351

Achromatopsia

68.7264, 72.3055, 78.7407

Achromatomaly

69.5361, 71.5882, 77.1708

CSS Examples

Text

The CSS property to change the color of the text to XYZ 71.7011, 71.2281, 74.9351 is called "color". The color property can be set on classes, ids or directly on the HTML element.

This example shows how text in the color `rgb(238, 214, 216)` looks like.

```
.text, #text, p{  
    color:rgb(238, 214, 216)  
}
```

If you want to add a text shadow in that color use the text-shadow property, you can generate a text shadow directly with our [CSS Text Shadow Generator](#).

Here you see how black text with a 4 pixel rgb(238, 214, 216) colored shadow looks like.

```
.shadow{ text-shadow: 4px 4px 2px rgb(238, 214, 216) }
```

Border

The CSS property to change the border of an element to XYZ 71.7011, 71.2281, 74.9351 is called "border". The border property can be set on classes, ids or directly on the HTML element.

This example shows the color as border, it can be applied via the CSS property "border" or "border-color".

```
.border, #border, table{ border:4px solid rgb(238, 214, 216) }
```


If only the border color should be changed use the property `border-color`.

```
.border{ border-color:rgb(238, 214, 216) }
```

If you want to add a box shadow in that color use:

Here you see how a box with a 4 pixel `rgb(238, 214, 216)` colored shadow looks like.

```
.boxshadow{ -moz-box-shadow:4px 4px 4px  
4px rgb(238, 214, 216); -webkit-box-  
shadow:4px 4px 4px 4px rgb(238, 214, 216);  
box-shadow:4px 4px 4px 4px rgb(238, 214,  
216) }
```

Background

The CSS property to change the background color of an element to XYZ 71.7011, 71.2281, 74.9351 is called "background". The background property can be set on classes, ids or directly on the HTML element.

```
.background, #background, body{  
background: rgb(238, 214, 216) }
```

If only the background color should be changed can be used:

```
.background{ background-color: rgb(238,  
214, 216) }
```

This example shows the color as background, it is applied via the CSS property "background".

To optimize and compress your CSS code, you can use our [online CSS compressor and optimizer](#) based on csstidy. If you want to create a linear or radial gradient as background or border, check our [CSS Gradient Generator](#).

Hey! You found this booklet interesting? Support Converting Colors with the new Membership Option!

The pro membership hides all ads, plus gives you double the colors in the color bucket, and more awesome pro features!

[Learn more, Memberships starting at \\$2.50/m!](#)

**Follow me
on Twitter!**

@ConvertingColor