

# Converting Colors

XYZ(71.9769, 72.1400, 73.8506)

Have a look what the booklet for  
XYZ(71.9769, 72.1400, 73.8506)  
contains.

<b>XYZ(71.9534, 72.1439, 73.7511)</b> .....	3
<b><i>Conversions</i></b> .....	4
<b><i>Details</i></b> .....	6
<b><i>Harmonies</i></b> .....	12
<b><i>Previews</i></b> .....	24
<b><i>Color Blindness Simulation</i></b> .....	28
<b><i>CSS Examples</i></b> .....	31

# Color

**XYZ(71.9534, 72.1439,  
73.7511)**

# Conversions

## Conversions Part 1

Format	Color
Hex	EED8D6
RGB	238, 216, 214
RGB Percent	93%, 85%, 84%
CMY	0.0667, 0.1529, 0.1608
CMYK	0.00, 0.09, 0.10, 0.07
HSL	5°, 41%, 89%
HSV	5°, 10%, 93%
XYZ	71.9534, 72.1439, 73.7511
YIQ	222.3500, 13.7540, 4.0420

# Conversions

## Conversions Part 2

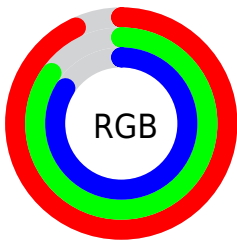
<b>Format</b>	<b>Color</b>
R <sub>Y</sub> B	238, 216, 214
Decimal	15653078
CIE Lab	88.04, 7.26, 3.73
CIE LCh	88, 8.160, 27.216
Yxy	72.1439, 0.3303, 0.3312
Android (android.graphics.Color)	4293843158 (0xFFEED8D6)
YUV	222.3500, -4.1165, 13.7251
Hunter-Lab	84.9376, 2.5725, 7.9749

# Details

The XYZ color **71.9534, 72.1439, 73.7511** is a light color, and the websafe version is hex **CCCCCC**. A complement of this color would be **73.1594, 80.4587, 92.5641**, and the grayscale version is **69.7016, 73.3315, 79.8580**.

A 20% lighter version of the original color is **95.0500, 100.0000, 108.9000**, and **38.2943, 37.9380, 38.1053** is the 20% darker color. If you saturate the color by 10%, you get **63.9114, 60.5734, 57.1540**, and if you desaturate by 10%, it is **81.1854, 85.3821, 92.9376**.

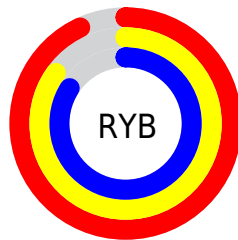
# Distribution



Red (93%)

Green (85%)

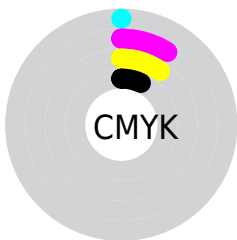
Blue (84%)



Red (93%)

Yellow (85%)

Blue (84%)

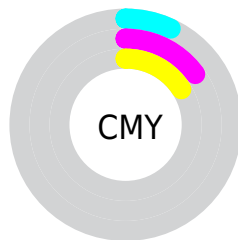


Cyan (0%)

Magenta (9%)

Yellow (10%)

Black (7%)



Cyan (7%)

Magenta (15%)

Yellow (16%)

# Brightness & Saturation Gradients

These gradients show how the XYZ color 71.9534, 72.1439, 73.7511 changes by changing the brightness by 10 percent. The first figure shows a shift by +10% for each color and the second figure -10%.

Similar to the brightness gradients but the following saturation gradients show a change of the XYZ color 71.9534, 72.1439, 73.7511 by changing the saturation by 10% instead.



71.9534, 72.1439,  
73.7511

71.9534, 72.1439,  
73.7511

456.5395,  
468.0423, 492.7543

53.4059, 53.2762,  
54.0948

121.0014,  
122.2611, 126.2737

38.3557, 38.0233,  
38.2838

152.2327,  
154.2794, 159.9771

26.4373, 26.0008,  
25.8995

188.4227,  
191.4501, 199.1999

17.2855, 16.8242,  
16.5233

229.9366,  
234.1575, 244.3606

10.5348, 10.1093,  
9.7369

277.1399,  
282.7860, 295.8779

5.8199, 5.4715,  
5.1215

330.3979,

2.7755, 2.5265,

337.7201, 354.1703

2.2588

390.0760,  
399.3440, 419.6562

■ 1.0362, 0.8898,  
0.7080

■ 0.0000, 0.0000,  
0.0000

■ 71.9534, 72.1439,  
73.7511

■ 71.9534, 72.1439,  
73.7511

■ 63.9114, 60.5734,  
57.1540

■ 81.1854, 85.3821,  
92.9376

■ 57.0051, 50.5953,  
43.0310

■ 89.0703, 96.9174,  
108.6202

■ 51.1852, 42.1428,  
31.2651

■ 46.3962, 35.1405,  
21.7276

■ 42.5776, 29.5070,  
14.2780

■ 39.6628, 25.1523,  
8.7595

■ 37.5766, 21.9761,  
4.9932

■ 36.2316, 19.8626,  
2.7668

■ 35.5083, 18.6733,  
1.7328

# Harmonies

## Analogous

The Analogous color harmony consists of three colors that are next to each other on the color wheel.



72.3776, 72.1439, 79.0743



71.9534, 72.1439, 73.7511



70.6174, 72.1439, 69.8804

# Triad

The Triadic color harmony groups three colors that are evenly spaced from another and form a triangle on the color wheel.



71.9534, 72.1439, 73.7511



65.4717, 72.1439, 72.8898



68.3890, 72.1439, 89.7534

# Complementary

The Complementary color scheme is a pair of colors which are on the opposite of each other on the color wheel.



71.9534, 72.1439, 73.7511



73.1594, 80.4587, 92.5641

# Split Complementary

Split-complementary colors differ from the complementary color scheme. The scheme consists of three colors, the original color and two neighbors of the complement color.



66.5638, 72.1439, 87.9138



71.9534, 72.1439, 73.7511



64.8995, 72.1439, 78.0329

# Square

The Square scheme is like the rectangle color scheme, but the four colors are evenly spaced on the color wheel.



71.9534, 72.1439, 73.7511



66.8730, 72.1439, 69.3999



65.2955, 72.1439, 83.5578



70.2968, 72.1439, 88.4762



# Rectangle

The Rectangle color scheme consists of four colors that form a rectangle on the color wheel.



71.9534, 72.1439, 73.7511



69.4022, 72.1439, 68.5553



65.2955, 72.1439, 83.5578



67.7457, 72.1439, 89.4771

# Sweetspot

The Sweet Spot groups the original color and five complimentary colors.



71.9554, 72.1471, 73.7526



91.6465, 95.1250, 101.8098



74.4478, 72.3274, 89.3946



19.4261, 20.0883, 21.3961



0.0000, 0.0000, 0.0000



20.3446, 21.4041, 23.3091

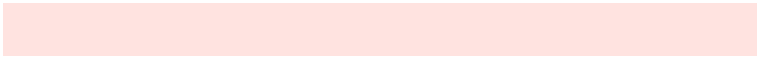


# Same Dimension

The Same Dimension uses a secret algorithm to generate beautiful new colors.



71.9554, 72.1471, 73.7526



82.2057, 81.5773, 82.2190



75.1419, 78.5200, 74.8148



15.8789, 15.9709, 16.3955



19.8470, 10.4921, 0.9791



1.6873, 0.9453, 0.0935



# Inverse Universe

The Inverse Universe completely reimagines the original color for something new.



73.1594, 80.4587, 92.5641



83.8648, 93.0317, 108.1445



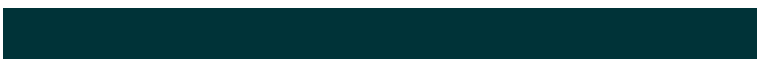
69.8208, 73.7815, 91.4512



16.1279, 17.6899, 20.2861



22.6621, 31.5484, 50.0229

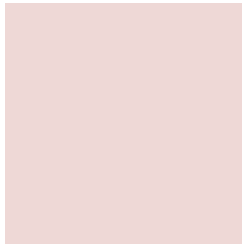


1.9183, 2.6906, 4.1725



# Previews

## White Background



This preview shows how the XYZ color 71.9534, 72.1439, 73.7511 looks on a white background.

## Color Contrast Check

Large Text (above 18pt) WCAG AA × Fail

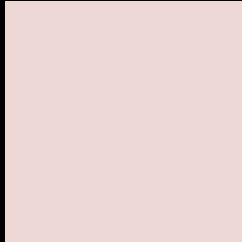
Any Text WCAG AA × Fail

Large Text (above 18pt) WCAG AAA × Fail

Any Text WCAG AAA × Fail



# Black Background



This preview shows how the XYZ color 71.9534, 72.1439, 73.7511 looks on a black background.

## Color Contrast Check

Large Text (above 18pt) WCAG AA ✓ Pass

Any Text WCAG AA ✓ Pass

Large Text (above 18pt) WCAG AAA ✓ Pass

Any Text WCAG AAA ✓ Pass

If you want to check with other color combinations, try the [Color Contrast Checker](#).

**XYZ 71.9534, 72.1439, 73.7511**

## **Background**



This preview shows how black text looks on a background with the XYZ color 71.9534, 72.1439, 73.7511.



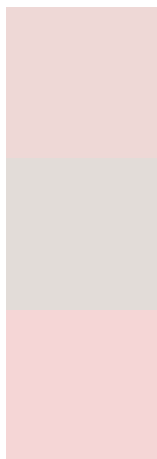
This preview shows how white text looks on a background with the XYZ color 71.9534, 72.1439,

73.7511.

# Color Blindness Simulation

Color vision deficiency is a very complex topic, and I could not describe the different causes any better than Wikipedia does, so if you want to learn more, you should check out their [article about color blindness](#).

## Dichromacy



### Original Color

71.9534, 72.1439, 73.7511

### Protanopia

69.3519, 72.3130, 75.2683

### Deuteranopia

73.8404, 72.3607, 73.6935



## Tritanopia

74.2647, 72.3316, 84.9101

# Trichromacy



## Original Color

71.9534, 72.1439, 73.7511

## Protanomaly

70.2304, 72.3923, 74.5616

## Deuteranomaly

73.0560, 72.3332, 73.7296

## Tritanomaly

73.3516, 72.3334, 80.6167

# Monochromacy



## Original Color

71.9534, 72.1439, 73.7511

## Achromatopsia

69.4303, 73.0461, 79.5472

## Achromatomaly

70.3743, 72.7949, 77.3595

# CSS Examples

## Text

The CSS property to change the color of the text to XYZ 71.9534, 72.1439, 73.7511 is called "color". The color property can be set on classes, ids or directly on the HTML element.

This example shows how text in the color rgb(238, 216, 214) looks like.

```
.text, #text, p{  
    color:rgb(238, 216, 214)  
}
```

If you want to add a text shadow in that color use the text-shadow property, you can generate a text shadow directly with our [CSS Text Shadow Generator](#).

Here you see how black text with a 4 pixel rgb(238, 216, 214) colored shadow looks like.

```
.shadow{ text-shadow: 4px 4px 2px rgb(238, 216, 214) }
```

## Border

The CSS property to change the border of an element to XYZ 71.9534, 72.1439, 73.7511 is called "border". The border property can be set on classes, ids or directly on the HTML element.

This example shows the color as border, it can be applied via the CSS property "border" or "border-color".

```
.border, #border, table{ border:4px solid rgb(238, 216, 214) }
```



If only the border color should be changed use the property border-color.

```
.border{ border-color:rgb(238, 216, 214) }
```

If you want to add a box shadow in that color use:

Here you see how a box with a 4 pixel rgb(238, 216, 214) colored shadow looks like.

```
.boxshadow{ -moz-box-shadow:4px 4px 4px  
4px rgb(238, 216, 214); -webkit-box-  
shadow:4px 4px 4px 4px rgb(238, 216, 214);  
box-shadow:4px 4px 4px 4px rgb(238, 216,  
214) }
```

# Background

The CSS property to change the background color of an element to XYZ 71.9534, 72.1439, 73.7511 is called "background". The background property can be set on classes, ids or directly on the HTML element.

```
.background, #background, body{  
background: rgb(238, 216, 214) }
```

If only the background color should be changed can be used:

```
.background{ background-color: rgb(238,  
216, 214) }
```

This example shows the color as background, it is applied via the CSS property "background".

To optimize and compress your CSS code, you can use our [online CSS compressor and optimizer](#) based on csstidy. If you want to create a linear or radial gradient as background or border, check our [CSS Gradient Generator](#).

Hey! You found this booklet interesting? Support Converting Colors with the new Membership Option!

The pro membership hides all ads, plus gives you double the colors in the color bucket, and more awesome pro features!

**[Learn more, Memberships starting at \\$2.50/m!](#)**

**Follow me  
on Twitter!**

@ConvertingColor