

Converting Colors

XYZ(72.0611, 72.7106, 76.6370)

Have a look what the booklet for
XYZ(72.0611, 72.7106, 76.6370)
contains.

XYZ(72.3184, 73.0376, 76.6158)	3
<i>Conversions</i>	4
<i>Details</i>	6
<i>Harmonies</i>	12
<i>Previews</i>	24
<i>Color Blindness Simulation</i>	28
<i>CSS Examples</i>	31

Color

**XYZ(72.3184, 73.0376,
76.6158)**

Conversions

Conversions Part 1

Format	Color
Hex	ECDADA
RGB	236, 218, 218
RGB Percent	93%, 85%, 85%
CMY	0.0745, 0.1451, 0.1451
CMYK	0.00, 0.08, 0.08, 0.07
HSL	0°, 32%, 89%
HSV	0°, 8%, 93%
XYZ	72.3184, 73.0376, 76.6158
YIQ	223.3820, 10.7280, 3.8160

Conversions

Conversions Part 2

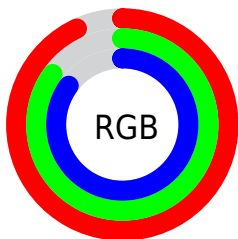
Format	Color
R _Y B	236, 218, 218
Decimal	15522522
CIE Lab	88.47, 6.18, 2.22
CIE LCh	88, 6.569, 19.789
Yxy	73.0376, 0.3258, 0.3290
Android (android.graphics.Color)	4293712602 (0xFFECDADA)
YUV	223.3820, -2.6533, 11.0660
Hunter-Lab	85.4620, 1.4890, 6.6706

Details

The XYZ color **72.3184, 73.0376, 76.6158** is a light color, and the websafe version is hex **CCCCCC**. A complement of this color would be **74.0492, 80.9513, 91.0802**, and the grayscale version is **70.4255, 74.0931, 80.6874**.

A 20% lighter version of the original color is **95.0500, 100.0000, 108.9000**, and **38.5304, 38.5420, 40.0589** is the 20% darker color. If you saturate the color by 10%, you get **63.7586, 60.5128, 59.5954**, and if you desaturate by 10%, it is **82.1931, 87.4867, 96.2457**.

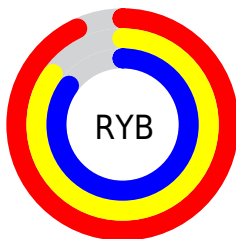
Distribution



Red (93%)

Green (85%)

Blue (85%)



Red (93%)

Yellow (85%)

Blue (85%)

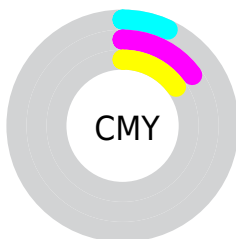


Cyan (0%)

Magenta (8%)

Yellow (8%)

Black (7%)



Cyan (7%)

Magenta (15%)

Yellow (15%)

Brightness & Saturation Gradients

These gradients show how the XYZ color 72.3184, 73.0376, 76.6158 changes by changing the brightness by 10 percent. The first figure shows a shift by +10% for each color and the second figure -10%.

Similar to the brightness gradients but the following saturation gradients show a change of the XYZ color 72.3184, 73.0376, 76.6158 by changing the saturation by 10% instead.

72.3184, 73.0376,
76.6158

72.3184, 73.0376,
76.6158

457.7895,
471.1451, 502.8559

53.7052, 54.0067,
56.4279

121.5175,
123.5306, 130.3651

38.5958, 38.6070,
40.1398

152.8340,
155.7615, 164.7635

26.6247, 26.4542,
27.3330

189.1158,
193.1611, 204.7359

17.4267, 17.1637,
17.5888

230.7281,
236.1140, 250.7008

10.6364, 10.3513,
10.4888

278.0362,
285.0044, 303.0767

5.8884, 5.6325,
5.6144

331.4056,

2.8173, 2.6229,

340.2168, 362.2822

2.5471

391.2016,
402.1356, 428.7357

■ 1.0579, 0.9382,
0.8650

■ 0.0000, 0.0000,
0.0000

■ 72.3184, 73.0376,
76.6158

■ 72.3184, 73.0376,
76.6158

■ 63.7586, 60.5128,
59.5954

■ 82.1931, 87.4867,
96.2457

■ 56.4523, 49.8219,
45.0701

■ 88.4025, 96.5731,
108.5889

■ 50.3428, 40.8821,
32.9243

■ 45.3662, 33.5998,
23.0311

■ 41.4529, 27.8734,
15.2521

■ 38.5255, 23.5896,
9.4335

■ 36.4964, 20.6200,
5.4007

■ 35.2622, 18.8136,
2.9483

■ 34.6845, 17.9680,
1.8009

Harmonies

Analogous

The Analogous color harmony consists of three colors that are next to each other on the color wheel.



72.4534, 73.0376, 81.0781



72.3184, 73.0376, 76.6158



71.4002, 73.0376, 73.0638

Triad

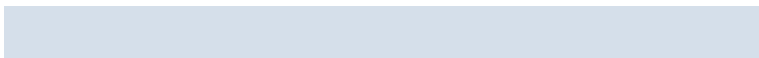
The Triadic color harmony groups three colors that are evenly spaced from another and form a triangle on the color wheel.



72.3184, 73.0376, 76.6158



67.1255, 73.0376, 74.0390



68.8828, 73.0376, 88.4004

Complementary

The Complementary color scheme is a pair of colors which are on the opposite of each other on the color wheel.



72.3184, 73.0376, 76.6158



74.0492, 80.9513, 91.0802

Split Complementary

Split-complementary colors differ from the complementary color scheme. The scheme consists of three colors, the original color and two neighbors of the complement color.



67.4769, 73.0376, 86.3575



72.3184, 73.0376, 76.6158



66.4726, 73.0376, 77.9929

Square

The Square scheme is like the rectangle color scheme, but the four colors are evenly spaced on the color wheel.



72.3184, 73.0376, 76.6158



68.3965, 73.0376, 71.6156



66.6002, 73.0376, 82.5080



70.4538, 73.0376, 87.9975

Rectangle

The Rectangle color scheme consists of four colors that form a rectangle on the color wheel.



72.3184, 73.0376, 76.6158



70.4750, 73.0376, 71.6360



66.6002, 73.0376, 82.5080



68.3756, 73.0376, 87.9740

Sweetspot

The Sweet Spot groups the original color and five complimentary colors.



72.3204, 73.0408, 76.6174



92.6345, 96.4656, 104.0977



74.8049, 74.0329, 89.7050



19.8529, 20.6846, 22.3315



0.0000, 0.0000, 0.0000



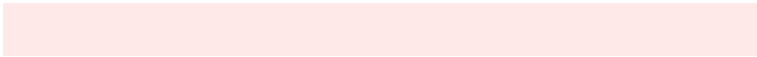
20.3446, 21.4041, 23.3091

Same Dimension

The Same Dimension uses a secret algorithm to generate beautiful new colors.



72.3204, 73.0408, 76.6174



84.6847, 84.8332, 88.2923



74.7171, 77.8341, 77.4163



15.0658, 15.0546, 15.6305



19.0682, 9.8307, 0.8925



1.4974, 0.7721, 0.0701

Inverse Universe

The Inverse Universe completely reimagines the original color for something new.



74.0492, 80.9513, 91.0802



87.1034, 95.9010, 108.5276



71.5239, 75.9009, 90.2385



15.5174, 17.1213, 19.4091



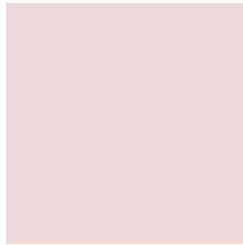
24.8717, 36.3904, 49.4561



1.9531, 2.8577, 3.8835

Previews

White Background



This preview shows how the XYZ color 72.3184, 73.0376, 76.6158 looks on a white background.

Color Contrast Check

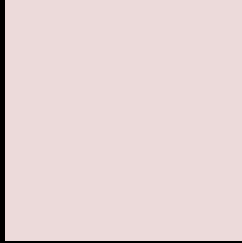
Large Text (above 18pt) WCAG AA × Fail

Any Text WCAG AA × Fail

Large Text (above 18pt) WCAG AAA × Fail

Any Text WCAG AAA × Fail

Black Background



This preview shows how the XYZ color 72.3184, 73.0376, 76.6158 looks on a black background.

Color Contrast Check

Large Text (above 18pt) WCAG AA ✓ Pass

Any Text WCAG AA ✓ Pass

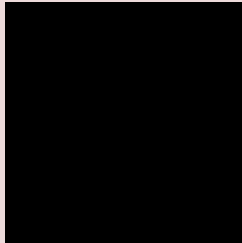
Large Text (above 18pt) WCAG AAA ✓ Pass

Any Text WCAG AAA ✓ Pass

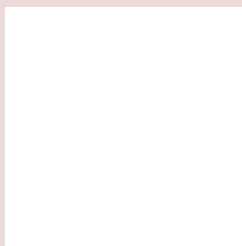
If you want to check with other color combinations, try the [Color Contrast Checker](#).

XYZ 72.3184, 73.0376, 76.6158

Background



This preview shows how black text looks on a background with the XYZ color 72.3184, 73.0376, 76.6158.



This preview shows how white text looks on a background with the XYZ color 72.3184, 73.0376,

76.6158.

Color Blindness Simulation

Color vision deficiency is a very complex topic, and I could not describe the different causes any better than Wikipedia does, so if you want to learn more, you should check out their [article about color blindness](#).

Dichromacy



Original Color

72.3184, 73.0376, 76.6158

Protanopia

70.1387, 73.0490, 78.1133

Deuteranopia

74.7428, 73.1278, 77.1935



Tritanopia

74.5237, 73.1721, 87.2866

Trichromacy



Original Color

72.3184, 73.0376, 76.6158

Protanomaly

71.0125, 73.1239, 77.3894

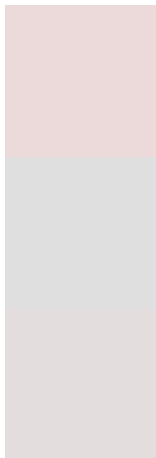
Deuteranomaly

73.9600, 73.1035, 77.2301

Tritanomaly

73.7415, 73.2317, 83.6473

Monochromacy



Original Color

72.3184, 73.0376, 76.6158

Achromatopsia

70.1384, 73.7910, 80.3584

Achromatomaly

70.9025, 73.4273, 78.8425

CSS Examples

Text

The CSS property to change the color of the text to XYZ 72.3184, 73.0376, 76.6158 is called "color". The color property can be set on classes, ids or directly on the HTML element.

This example shows how text in the color rgb(236, 218, 218) looks like.

```
.text, #text, p{  
    color:rgb(236, 218, 218)  
}
```

If you want to add a text shadow in that color use the text-shadow property, you can generate a text shadow directly with our [CSS Text Shadow Generator](#).

Here you see how black text with a 4 pixel rgb(236, 218, 218) colored shadow looks like.

```
.shadow{ text-shadow: 4px 4px 2px rgb(236, 218, 218) }
```

Border

The CSS property to change the border of an element to XYZ 72.3184, 73.0376, 76.6158 is called "border". The border property can be set on classes, ids or directly on the HTML element.

This example shows the color as border, it can be applied via the CSS property "border" or "border-color".

```
.border, #border, table{ border:4px solid rgb(236, 218, 218) }
```


If only the border color should be changed use the property `border-color`.

```
.border{ border-color:rgb(236, 218, 218) }
```

If you want to add a box shadow in that color use:

Here you see how a box with a 4 pixel `rgb(236, 218, 218)` colored shadow looks like.

```
.boxshadow{ -moz-box-shadow:4px 4px 4px  
4px rgb(236, 218, 218); -webkit-box-  
shadow:4px 4px 4px 4px rgb(236, 218, 218);  
box-shadow:4px 4px 4px 4px rgb(236, 218,  
218) }
```

Background

The CSS property to change the background color of an element to XYZ 72.3184, 73.0376, 76.6158 is called "background". The background property can be set on classes, ids or directly on the HTML element.

```
.background, #background, body{  
background: rgb(236, 218, 218) }
```

If only the background color should be changed can be used:

```
.background{ background-color: rgb(236,  
218, 218) }
```

This example shows the color as background, it is applied via the CSS property "background".

To optimize and compress your CSS code, you can use our [online CSS compressor and optimizer](#) based on csstidy. If you want to create a linear or radial gradient as background or border, check our [CSS Gradient Generator](#).

Hey! You found this booklet interesting? Support Converting Colors with the new Membership Option!

The pro membership hides all ads, plus gives you double the colors in the color bucket, and more awesome pro features!

[Learn more, Memberships starting at \\$2.50/m!](#)

**Follow me
on Twitter!**

@ConvertingColor