

Converting Colors

XYZ(72.4715, 71.7334, 73.8235)

Have a look what the booklet for
XYZ(72.4715, 71.7334, 73.8235)
contains.

| | |
|--|----|
| XYZ(72.4598, 71.6489, 73.6289) | 3 |
| <i>Conversions</i> | 4 |
| <i>Details</i> | 6 |
| <i>Harmonies</i> | 12 |
| <i>Previews</i> | 24 |
| <i>Color Blindness Simulation</i> | 28 |
| <i>CSS Examples</i> | 31 |

Color

**XYZ(72.4598, 71.6489,
73.6289)**

Conversions

Conversions Part 1

| Format | Color |
|-------------|---------------------------|
| Hex | F1D6D6 |
| RGB | 241, 214, 214 |
| RGB Percent | 95%, 84%, 84% |
| CMY | 0.0549, 0.1608, 0.1608 |
| CMYK | 0.00, 0.11, 0.11, 0.05 |
| HSL | 0°, 49%, 89% |
| HSV | 0°, 11%, 95% |
| XYZ | 72.4598, 71.6489, 73.6289 |
| YIQ | 222.0730, 16.0920, 5.7240 |

Conversions

Conversions Part 2

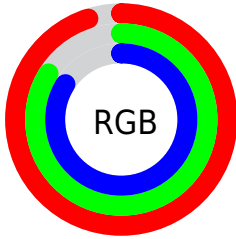
| Format | Color |
|-------------------------------------|-------------------------------|
| R _Y B | 241, 214, 214 |
| Decimal | 15849174 |
| CIE Lab | 87.80, 9.35, 3.42 |
| CIE LCh | 88, 9.956, 20.077 |
| Yxy | 71.6489, 0.3328, 0.3291 |
| Android (android.graphics.Color) | 4294039254 (0xFFFF1D6D6) |
| YUV | 222.0730, -3.9800, 16.5990 |
| Hunter-Lab | 84.6457, 4.6726, 7.6787 |

Details

The XYZ color **72.4598, 71.6489, 73.6289** is a light color, and the websafe version is hex **FFCCCC**. A complement of this color would be **75.0638, 83.5561, 95.3916**, and the grayscale version is **69.5036, 73.1232, 79.6312**.

A 20% lighter version of the original color is **95.0500, 100.0000, 108.9000**, and **38.6637, 37.6138, 38.0233** is the 20% darker color. If you saturate the color by 10%, you get **63.9533, 59.2020, 56.7151**, and if you desaturate by 10%, it is **82.3278, 86.0885, 93.2448**.

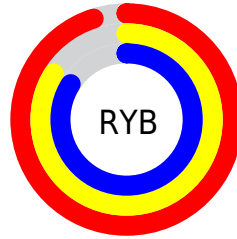
Distribution



Red (95%)

Green (84%)

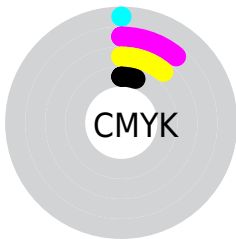
Blue (84%)



Red (95%)

Yellow (84%)

Blue (84%)

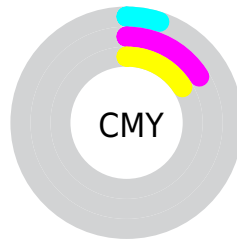


Cyan (0%)

Magenta (11%)

Yellow (11%)

Black (5%)



Cyan (5%)


Magenta (16%)


Yellow (16%)

Brightness & Saturation Gradients


These gradients show how the XYZ color 72.4598, 71.6489, 73.6289 changes by changing the brightness by 10 percent. The first figure shows a shift by +10% for each color and the second figure -10%.

Similar to the brightness gradients but the following saturation gradients show a change of the XYZ color 72.4598, 71.6489, 73.6289 by changing the saturation by 10% instead.


 72.4598, 71.6489,
73.6289

 72.4598, 71.6489,
73.6289

458.2733,
466.3186, 492.3207

 53.8212, 52.8719,
53.9954


121.7173,
121.5572, 126.0988

 38.6888, 37.7005,
38.2048


153.0669,
153.4574, 159.7723

 26.6974, 25.7503,
25.8386


189.3841,
190.5007, 198.9628

 17.4815, 16.6370,
16.4783

231.0344,
233.0715, 244.0890

 10.6758, 9.9760,
9.7052

278.3831,
281.5544, 295.5693

 5.9149, 5.3830,
5.1009

331.7956,

 2.8336, 2.4737,

336.3336, 353.8224

2.2468

391.6372,
397.7935, 419.2666

■ 1.0664, 0.8634,
0.7012

■ 0.0000, 0.0000,
0.0000

■ 72.4598, 71.6489,
73.6289

■ 72.4598, 71.6489,
73.6289

■ 63.9533, 59.2020,
56.7151

■ 82.3278, 86.0885,
93.2448

■ 56.7429, 48.6513,
42.3809

■ 90.0860, 97.4410,
108.6677

■ 50.7669, 39.9067,
30.5008

■ 45.9561, 32.8670,
20.9373

■ 42.2345, 27.4211,
13.5394

■ 39.5172, 23.4446,
8.1382

■ 37.7065, 20.7949,
4.5395

■ 36.6857, 19.3008,
2.5111

■ 36.2764, 18.7018,
1.6978

Harmonies

Analogous

The Analogous color harmony consists of three colors that are next to each other on the color wheel.



72.6771, 71.6489, 80.2787



72.4598, 71.6489, 73.6289



71.0595, 71.6489, 68.4486

Triad

The Triadic color harmony groups three colors that are evenly spaced from another and form a triangle on the color wheel.



72.4598, 71.6489, 73.6289



64.6729, 71.6489, 69.9528



67.3197, 71.6489, 91.5539

Complementary

The Complementary color scheme is a pair of colors which are on the opposite of each other on the color wheel.



72.4598, 71.6489, 73.6289



75.0638, 83.5561, 95.3916

Split Complementary

Split-complementary colors differ from the complementary color scheme. The scheme consists of three colors, the original color and two neighbors of the complement color.



65.2241, 71.6489, 88.4303



72.4598, 71.6489, 73.6289



63.7195, 71.6489, 75.7913

Square

The Square scheme is like the rectangle color scheme, but the four colors are evenly spaced on the color wheel.



72.4598, 71.6489, 73.6289



66.5514, 71.6489, 66.4129



63.9189, 71.6489, 82.5687



69.6727, 71.6489, 90.8919

Rectangle

The Rectangle color scheme consists of four colors that form a rectangle on the color wheel.



72.4598, 71.6489, 73.6289



69.6610, 71.6489, 66.4021



63.9189, 71.6489, 82.5687



66.5627, 71.6489, 90.9052

Sweetspot

The Sweet Spot groups the original color and five complimentary colors.



72.4618, 71.6521, 73.6304



91.4508, 94.7335, 101.7446



76.2003, 73.1458, 93.3223



19.3736, 19.9833, 21.3786



0.0000, 0.0000, 0.0000



20.3446, 21.4041, 23.3091

Same Dimension

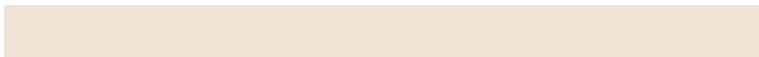
The Same Dimension uses a secret algorithm to generate beautiful new colors.



72.4618, 71.6521, 73.6304



80.4875, 78.6915, 79.9487



76.0202, 78.7689, 74.8166



15.7731, 15.7592, 16.3602



19.6718, 10.1416, 0.9207



1.6366, 0.8438, 0.0766

Inverse Universe

The Inverse Universe completely reimagines the original color for something new.



75.0638, 83.5561, 95.3916



83.8867, 94.2427, 108.3771



71.2158, 75.8601, 94.1090



16.2472, 17.9286, 20.3258



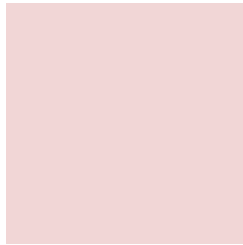
25.6615, 37.5473, 51.0227



2.1349, 3.1237, 4.2446

Previews

White Background



This preview shows how the XYZ color 72.4598, 71.6489, 73.6289 looks on a white background.

Color Contrast Check

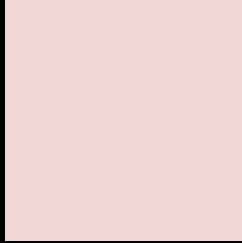
Large Text (above 18pt) WCAG AA × Fail

Any Text WCAG AA × Fail

Large Text (above 18pt) WCAG AAA × Fail

Any Text WCAG AAA × Fail

Black Background



This preview shows how the XYZ color 72.4598, 71.6489, 73.6289 looks on a black background.

Color Contrast Check

Large Text (above 18pt) WCAG AA ✓ Pass

Any Text WCAG AA ✓ Pass

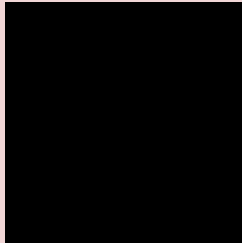
Large Text (above 18pt) WCAG AAA ✓ Pass

Any Text WCAG AAA ✓ Pass

If you want to check with other color combinations, try the [Color Contrast Checker](#).

XYZ 72.4598, 71.6489, 73.6289

Background



This preview shows how black text looks on a background with the XYZ color 72.4598, 71.6489, 73.6289.



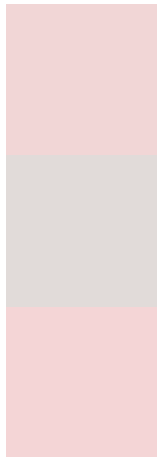
This preview shows how white text looks on a background with the XYZ color 72.4598, 71.6489,

73.6289.

Color Blindness Simulation

Color vision deficiency is a very complex topic, and I could not describe the different causes any better than Wikipedia does, so if you want to learn more, you should check out their [article about color blindness](#).

Dichromacy



Original Color

72.4598, 71.6489, 73.6289

Protanopia

68.9072, 71.6803, 75.8495

Deuteranopia

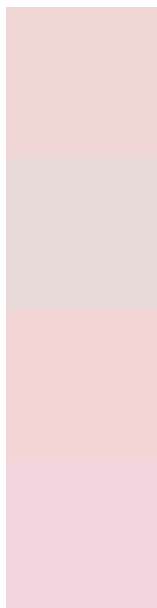
73.2401, 71.6766, 73.5931



Tritanopia

74.5092, 71.7431, 83.3195

Trichromacy



Original Color

72.4598, 71.6489, 73.6289

Protanomaly

70.1625, 71.5725, 75.0827

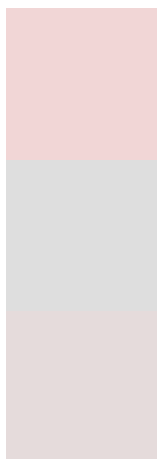
Deuteranomaly

72.8940, 71.4982, 73.5769

Tritanomaly

73.7315, 71.7935, 79.7835

Monochromacy



Original Color

72.4598, 71.6489, 73.6289

Achromatopsia

69.4303, 73.0461, 79.5472

Achromatomaly

70.4308, 72.4355, 77.2872

CSS Examples

Text

The CSS property to change the color of the text to XYZ 72.4598, 71.6489, 73.6289 is called "color". The color property can be set on classes, ids or directly on the HTML element.

This example shows how text in the color `rgb(241, 214, 214)` looks like.

```
.text, #text, p{  
    color:rgb(241, 214, 214)  
}
```

If you want to add a text shadow in that color use the text-shadow property, you can generate a text shadow directly with our [CSS Text Shadow Generator](#).

Here you see how black text with a 4 pixel rgb(241, 214, 214) colored shadow looks like.

```
.shadow{ text-shadow: 4px 4px 2px rgb(241, 214, 214) }
```

Border

The CSS property to change the border of an element to XYZ 72.4598, 71.6489, 73.6289 is called "border". The border property can be set on classes, ids or directly on the HTML element.

This example shows the color as border, it can be applied via the CSS property "border" or "border-color".

```
.border, #border, table{ border:4px solid rgb(241, 214, 214) }
```


If only the border color should be changed use the property border-color.

```
.border{ border-color:rgb(241, 214, 214) }
```

If you want to add a box shadow in that color use:

Here you see how a box with a 4 pixel rgb(241, 214, 214) colored shadow looks like.

```
.boxshadow{ -moz-box-shadow:4px 4px 4px  
4px rgb(241, 214, 214); -webkit-box-  
shadow:4px 4px 4px 4px rgb(241, 214, 214);  
box-shadow:4px 4px 4px 4px rgb(241, 214,  
214) }
```

Background

The CSS property to change the background color of an element to XYZ 72.4598, 71.6489, 73.6289 is called "background". The background property can be set on classes, ids or directly on the HTML element.

```
.background, #background, body{  
background: rgb(241, 214, 214) }
```

If only the background color should be changed can be used:

```
.background{ background-color: rgb(241,  
214, 214) }
```

This example shows the color as background, it is applied via the CSS property "background".

To optimize and compress your CSS code, you can use our [online CSS compressor and optimizer](#) based on csstidy. If you want to create a linear or radial gradient as background or border, check our [CSS Gradient Generator](#).

Hey! You found this booklet interesting? Support Converting Colors with the new Membership Option!

The pro membership hides all ads, plus gives you double the colors in the color bucket, and more awesome pro features!

[Learn more, Memberships starting at \\$2.50/m!](#)

**Follow me
on Twitter!**

@ConvertingColor