

# Converting Colors

XYZ(72.7486, 63.7655, 75.6676)

Have a look what the booklet for  
XYZ(72.7486, 63.7655, 75.6676)  
contains.

<b>XYZ(72.6570, 63.6361, 75.4714)</b> .....	3
<b><i>Conversions</i></b> .....	4
<b><i>Details</i></b> .....	6
<b><i>Harmonies</i></b> .....	12
<b><i>Previews</i></b> .....	24
<b><i>Color Blindness Simulation</i></b> .....	28
<b><i>CSS Examples</i></b> .....	31

# Color

**XYZ(72.6570, 63.6361,  
75.4714)**

# Conversions

## Conversions Part 1

Format	Color
Hex	FFBFDB
RGB	255, 191, 219
RGB Percent	100%, 75%, 86%
CMY	0.0000, 0.2510, 0.1412
CMYK	0.00, 0.25, 0.14, 0.00
HSL	334°, 100%, 87%
HSV	334°, 25%, 100%
XYZ	72.6570, 63.6361, 75.4714
YIQ	213.3280, 29.1560, 22.2760

# Conversions

## Conversions Part 2

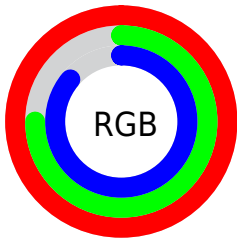
Format	Color
R <sub>Y</sub> B	255, 191, 219
Decimal	16760795
CIE Lab	83.78, 27.11, -4.97
CIE LCh	84, 27.559, 349.607
Yxy	63.6361, 0.3431, 0.3005
Android (android.graphics.Color)	4294950875 (0xFFFFBFDB)
YUV	213.3280, 2.7963, 36.5463
Hunter-Lab	79.7722, 22.9774, -0.2529

# Details

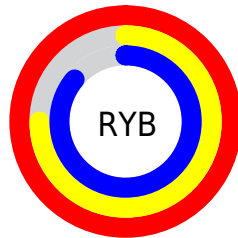
The XYZ color **72.6570, 63.6361, 75.4714** is a light color, and the websafe version is hex **FFCCFF**. A complement of this color would be **71.1132, 88.1435, 85.9419**, and the grayscale version is **63.4349, 66.7385, 72.6782**.

A 20% lighter version of the original color is **92.8574, 95.6148, 108.1691**, and **38.6725, 32.4420, 39.3456** is the 20% darker color. If you saturate the color by 10%, you get **65.7646, 52.7444, 64.2551**, and if you desaturate by 10%, it is **80.6832, 76.5345, 87.8703**.

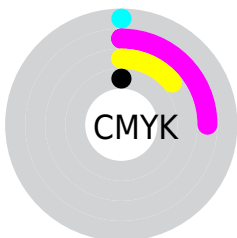
# Distribution



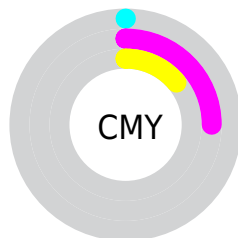
- Red (100%)
- Green (75%)
- Blue (86%)



- Red (100%)
- Yellow (75%)
- Blue (86%)



- Cyan (0%)
- Magenta (25%)
- Yellow (14%)
- Black (0%)



- Cyan (0%)
- Magenta (25%)
- Yellow (14%)

# Brightness & Saturation Gradients

These gradients show how the XYZ color 72.6570, 63.6361, 75.4714 changes by changing the brightness by 10 percent. The first figure shows a shift by +10% for each color and the second figure -10%.

Similar to the brightness gradients but the following saturation gradients show a change of the XYZ color 72.6570, 63.6361, 75.4714 by changing the saturation by 10% instead.



72.6570, 63.6361,  
75.4714

72.6570, 63.6361,  
75.4714

458.9474,  
437.8744, 498.8349

53.9829, 46.3560,  
55.4951

121.9959,  
110.0867, 128.7327

38.8186, 32.5268,  
39.3970

153.3915,  
140.0260, 162.8547

26.7987, 21.7642,  
26.7585

189.7582,  
174.9538, 202.5291

17.5579, 13.6838,  
17.1611

231.4615,  
215.2545, 248.1743

10.7308, 7.9010,  
10.1862

278.8667,  
261.3125, 300.2090

5.9521, 4.0317,  
5.4154

332.3392,

2.8564, 1.6913,

313.5122, 359.0516

2.4300

392.2443,  
372.2380, 425.1207

■ 1.0783, 0.4180,  
0.8027

■ 0.0068, 0.0000,  
0.0000

■ 72.6570, 63.6361,  
75.4714

■ 72.6570, 63.6361,  
75.4714

■ 65.7646, 52.7444,  
64.2551

■ 80.6832, 76.5345,  
87.8703

■ 59.9474, 43.7493,  
54.1791

■ 89.8892, 91.5260,  
101.4840

■ 55.1478, 36.5424,  
45.2042

95.0500, 100.0000,  
108.9000

■ 51.3010, 31.0010,  
37.2868

■ 48.3340, 26.9867,  
30.3798

■ 46.1624, 24.3382,  
24.4310

■ 44.6828, 22.8574,  
19.3805

■ 44.1398, 22.4199,  
17.2004

# Harmonies

## Analogous

The Analogous color harmony consists of three colors that are next to each other on the color wheel.



69.7792, 63.6361, 93.1862



72.6570, 63.6361, 75.4714



72.1120, 63.6361, 58.7042

# Triad

The Triadic color harmony groups three colors that are evenly spaced from another and form a triangle on the color wheel.



72.6570, 63.6361, 75.4714



56.6656, 63.6361, 42.4153



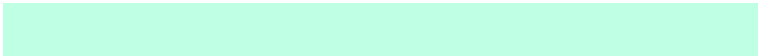
53.2578, 63.6361, 97.8716

# Complementary

The Complementary color scheme is a pair of colors which are on the opposite of each other on the color wheel.



72.6570, 63.6361, 75.4714



71.1132, 88.1435, 85.9419

# Split Complementary

Split-complementary colors differ from the complementary color scheme. The scheme consists of three colors, the original color and two neighbors of the complement color.



50.1788, 63.6361, 81.0751



72.6570, 63.6361, 75.4714



52.0536, 63.6361, 49.8721

# Square

The Square scheme is like the rectangle color scheme, but the four colors are evenly spaced on the color wheel.



72.6570, 63.6361, 75.4714



62.6061, 63.6361, 41.4248



49.7531, 63.6361, 63.4536



58.4108, 63.6361, 107.4753



# Rectangle

The Rectangle color scheme consists of four colors that form a rectangle on the color wheel.



72.6570, 63.6361, 75.4714



69.8920, 63.6361, 50.1536



49.7531, 63.6361, 63.4536



51.9609, 63.6361, 92.7607

# Sweetspot

The Sweet Spot groups the original color and five complimentary colors.



72.6585, 63.6388, 75.4727



87.0909, 86.9507, 97.4027



68.1098, 60.6858, 102.7315



18.3394, 18.1191, 20.4045



0.0000, 0.0000, 0.0000



20.3446, 21.4041, 23.3091



# Same Dimension

The Same Dimension uses a secret algorithm to generate beautiful new colors.



72.6585, 63.6388, 75.4727



69.1395, 58.0519, 69.8261



69.9823, 63.6971, 57.9001



18.3394, 18.1191, 20.4045



23.1359, 11.7437, 9.3663



2.3064, 1.1649, 1.1949



# Inverse Universe

The Inverse Universe completely reimagines the original color for something new.



72.6585, 63.6388, 75.4727



69.1395, 58.0519, 69.8261



74.2851, 87.7926, 107.6382



18.3394, 18.1191, 20.4045



23.1359, 11.7437, 9.3663



2.3064, 1.1649, 1.1949



# Previews

## White Background



This preview shows how the XYZ color 72.6570, 63.6361, 75.4714 looks on a white background.

## Color Contrast Check

Large Text (above 18pt) WCAG AA × Fail

Any Text WCAG AA × Fail

Large Text (above 18pt) WCAG AAA × Fail

Any Text WCAG AAA × Fail



# Black Background



This preview shows how the XYZ color 72.6570, 63.6361, 75.4714 looks on a black background.

## Color Contrast Check

Large Text (above 18pt) WCAG AA ✓ Pass

Any Text WCAG AA ✓ Pass

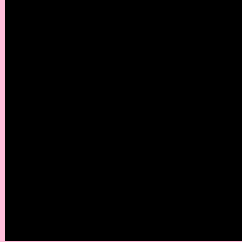
Large Text (above 18pt) WCAG AAA ✓ Pass

Any Text WCAG AAA ✓ Pass

If you want to check with other color combinations, try the [Color Contrast Checker](#).

**XYZ 72.6570, 63.6361, 75.4714**

## **Background**



This preview shows how black text looks on a background with the XYZ color 72.6570, 63.6361, 75.4714.



This preview shows how white text looks on a background with the XYZ color 72.6570, 63.6361,

75.4714.

# Color Blindness Simulation

Color vision deficiency is a very complex topic, and I could not describe the different causes any better than Wikipedia does, so if you want to learn more, you should check out their [article about color blindness](#).

## Dichromacy



### Original Color

72.6570, 63.6361, 75.4714

### Protanopia

62.4309, 64.0343, 83.1981

### Deuteranopia

65.2444, 63.8904, 74.5390



## Tritanopia

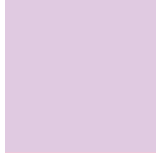
71.3282, 63.7648, 68.2229

# Trichromacy



## Original Color

72.6570, 63.6361, 75.4714



## Protanomaly

65.4516, 63.5246, 80.0460



## Deuteranomaly

68.0034, 63.9133, 75.0820



## Tritanomaly

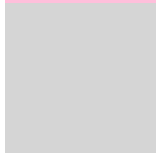
71.6064, 63.5236, 70.7746

# Monochromacy



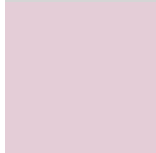
## Original Color

72.6570, 63.6361, 75.4714



## Achromatopsia

63.2451, 66.5387, 72.4607



## Achromatomaly

66.0920, 65.0629, 73.3650

# CSS Examples

## Text

The CSS property to change the color of the text to XYZ 72.6570, 63.6361, 75.4714 is called "color". The color property can be set on classes, ids or directly on the HTML element.

This example shows how text in the color `rgb(255, 191, 219)` looks like.

```
.text, #text, p{  
    color:rgb(255, 191, 219)  
}
```

If you want to add a text shadow in that color use the text-shadow property, you can generate a text shadow directly with our [CSS Text Shadow Generator](#).

Here you see how black text with a 4 pixel rgb(255, 191, 219) colored shadow looks like.

```
.shadow{ text-shadow: 4px 4px 2px rgb(255, 191, 219) }
```

## Border

The CSS property to change the border of an element to XYZ 72.6570, 63.6361, 75.4714 is called "border". The border property can be set on classes, ids or directly on the HTML element.

This example shows the color as border, it can be applied via the CSS property "border" or "border-color".

```
.border, #border, table{ border:4px solid rgb(255, 191, 219) }
```



If only the border color should be changed use the property `border-color`.

```
.border{ border-color:rgb(255, 191, 219) }
```

If you want to add a box shadow in that color use:

Here you see how a box with a 4 pixel `rgb(255, 191, 219)` colored shadow looks like.

```
.boxshadow{ -moz-box-shadow:4px 4px 4px  
4px rgb(255, 191, 219); -webkit-box-  
shadow:4px 4px 4px 4px rgb(255, 191, 219);  
box-shadow:4px 4px 4px 4px rgb(255, 191,  
219) }
```

# Background

The CSS property to change the background color of an element to XYZ 72.6570, 63.6361, 75.4714 is called "background". The background property can be set on classes, ids or directly on the HTML element.

```
.background, #background, body{  
background: rgb(255, 191, 219) }
```

If only the background color should be changed can be used:

```
.background{ background-color: rgb(255,  
191, 219) }
```

This example shows the color as background, it is applied via the CSS property "background".

To optimize and compress your CSS code, you can use our [online CSS compressor and optimizer](#) based on csstidy. If you want to create a linear or radial gradient as background or border, check our [CSS Gradient Generator](#).

Hey! You found this booklet interesting? Support Converting Colors with the new Membership Option!

The pro membership hides all ads, plus gives you double the colors in the color bucket, and more awesome pro features!

**[Learn more, Memberships starting at \\$2.50/m!](#)**

**Follow me  
on Twitter!**

@ConvertingColor