

Converting Colors

XYZ(72.7655, 74.0081, 78.1527)

Have a look what the booklet for
XYZ(72.7655, 74.0081, 78.1527)
contains.

XYZ(72.7724, 74.0159, 78.1611)	3
<i>Conversions</i>	4
<i>Details</i>	6
<i>Harmonies</i>	12
<i>Previews</i>	24
<i>Color Blindness Simulation</i>	28
<i>CSS Examples</i>	31

Color

**XYZ(72.7724, 74.0159,
78.1611)**

Conversions

Conversions Part 1

Format	Color
Hex	EBDCDC
RGB	235, 220, 220
RGB Percent	92%, 86%, 86%
CMY	0.0784, 0.1372, 0.1372
CMYK	0.00, 0.06, 0.06, 0.08
HSL	0°, 27%, 89%
HSV	0°, 6%, 92%
XYZ	72.7724, 74.0159, 78.1611
YIQ	224.4850, 8.9400, 3.1800

Conversions

Conversions Part 2

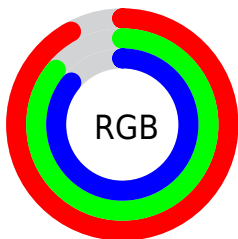
Format	Color
RYB	235, 220, 220
Decimal	15457500
CIELab	88.93, 5.13, 1.84
CIELCh	89, 5.452, 19.688
Yxy	74.0159, 0.3235, 0.3290
Android (android.graphics.Color)	4293647580 (0xFFEBDCDC)
YUV	224.4850, -2.2111, 9.2217
Hunter-Lab	86.0325, 0.4311, 6.3574

Details

The XYZ color **72.7724, 74.0159, 78.1611** is a light color, and the websafe version is hex **CCCCCC**. A complement of this color would be **74.2187, 80.6290, 90.2493**, and the grayscale version is **71.2112, 74.9197, 81.5875**.

A 20% lighter version of the original color is **95.0500, 100.0000, 108.9000**, and **38.8371, 39.2106, 41.1188** is the 20% darker color. If you saturate the color by 10%, you get **64.1380, 61.3821, 60.9918**, and if you desaturate by 10%, it is **82.7151, 88.5642, 97.9268**.

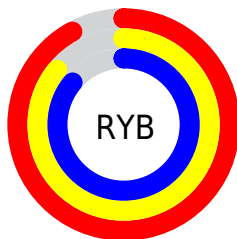
Distribution



Red (92%)

Green (86%)

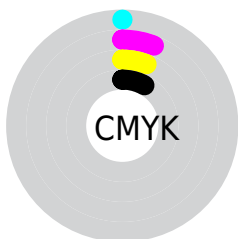
Blue (86%)



Red (92%)

Yellow (86%)

Blue (86%)

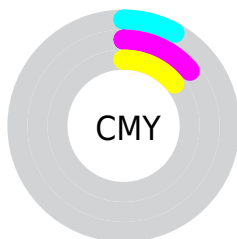


Cyan (0%)

Magenta (6%)

Yellow (6%)

Black (8%)



Cyan (8%)

Magenta (14%)

Yellow (14%)

Brightness & Saturation Gradients

These gradients show how the XYZ color 72.7724, 74.0159, 78.1611 changes by changing the brightness by 10 percent. The first figure shows a shift by +10% for each color and the second figure -10%.

Similar to the brightness gradients but the following saturation gradients show a change of the XYZ color 72.7724, 74.0159, 78.1611 by changing the saturation by 10% instead.

72.7724, 74.0159,
78.1611

72.7724, 74.0159,
78.1611

459.3416,
474.5282, 508.2562

54.0776, 54.8071,
57.6891

122.1589,
124.9183, 132.5651

38.8946, 39.2473,
41.1457

153.5813,
157.3807, 167.3342

26.8581, 26.9521,
28.1124

189.9770,
195.0298, 207.7061

17.6027, 17.5373,
18.1706

231.7113,
238.2498, 254.0993

10.7631, 10.6183,
10.9018

279.1496,
287.4253, 306.9324

5.9739, 5.8108,
5.8875

332.6571,

2.8697, 2.7304,

342.9406, 366.6239

2.7091

392.5994,
405.1801, 433.5923

■ 1.0852, 0.9926,
0.9480

■ 0.0127, 0.0000,
0.0000

■ 72.7724, 74.0159,
78.1611

■ 72.7724, 74.0159,
78.1611

■ 64.1380, 61.3821,
60.9918

■ 82.7151, 88.5642,
97.9268

■ 56.7514, 50.5738,
46.3064

■ 88.0713, 96.4024,
108.5734

■ 50.5569, 41.5097,
33.9916

■ 45.4922, 34.0985,
23.9230

■ 41.4889, 28.2405,
15.9653

■ 38.4718, 23.8252,
9.9683

■ 36.3555, 20.7280,
5.7624

■ 35.0401, 18.8028,
3.1490

■ 34.4008, 17.8669,
1.8796

Harmonies

Analogous

The Analogous color harmony consists of three colors that are next to each other on the color wheel.



72.8825, 74.0159, 81.9020



72.7724, 74.0159, 78.1611



72.0086, 74.0159, 75.1619

Triad

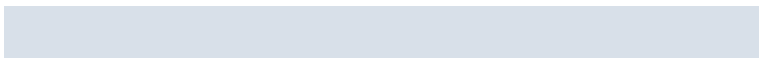
The Triadic color harmony groups three colors that are evenly spaced from another and form a triangle on the color wheel.



72.7724, 74.0159, 78.1611



68.4278, 74.0159, 75.9686



69.8955, 74.0159, 87.9733

Complementary

The Complementary color scheme is a pair of colors which are on the opposite of each other on the color wheel.



72.7724, 74.0159, 78.1611



74.2187, 80.6290, 90.2493

Split Complementary

Split-complementary colors differ from the complementary color scheme. The scheme consists of three colors, the original color and two neighbors of the complement color.



68.7169, 74.0159, 86.2749



72.7724, 74.0159, 78.1611



67.8766, 74.0159, 79.2935

Square

The Square scheme is like the rectangle color scheme, but the four colors are evenly spaced on the color wheel.



72.7724, 74.0159, 78.1611



69.4963, 74.0159, 73.9238



67.9818, 74.0159, 83.0702



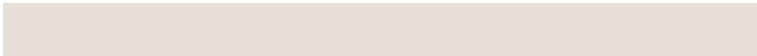
71.2104, 74.0159, 87.6469

Rectangle

The Rectangle color scheme consists of four colors that form a rectangle on the color wheel.



72.7724, 74.0159, 78.1611



71.2367, 74.0159, 73.9494



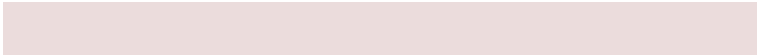
67.9818, 74.0159, 83.0702



69.4705, 74.0159, 87.6182

Sweetspot

The Sweet Spot groups the original color and five complimentary colors.



72.7745, 74.0191, 78.1627



92.6346, 96.4658, 104.0977



74.8505, 74.8478, 89.1001



19.8529, 20.6847, 22.3315



0.0000, 0.0000, 0.0000



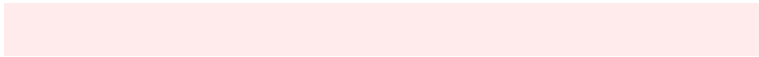
20.3446, 21.4041, 23.3091

Same Dimension

The Same Dimension uses a secret algorithm to generate beautiful new colors.



72.7745, 74.0191, 78.1627



85.7732, 86.4262, 90.4558



74.7862, 78.0426, 78.8333



15.0659, 15.0547, 15.6305



19.0683, 9.8309, 0.8925



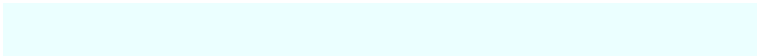
1.4974, 0.7722, 0.0701

Inverse Universe

The Inverse Universe completely reimagines the original color for something new.



74.2187, 80.6290, 90.2493



87.9372, 96.3305, 108.5666



72.1176, 76.4269, 89.5490



15.5174, 17.1212, 19.4091



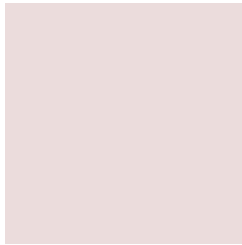
24.8694, 36.3858, 49.4554



1.9530, 2.8574, 3.8835

Previews

White Background



This preview shows how the XYZ color 72.7724, 74.0159, 78.1611 looks on a white background.

Color Contrast Check

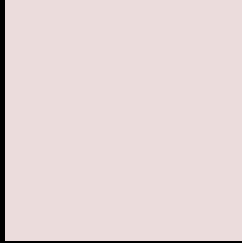
Large Text (above 18pt) WCAG AA × Fail

Any Text WCAG AA × Fail

Large Text (above 18pt) WCAG AAA × Fail

Any Text WCAG AAA × Fail

Black Background



This preview shows how the XYZ color 72.7724, 74.0159, 78.1611 looks on a black background.

Color Contrast Check

Large Text (above 18pt) WCAG AA ✓ Pass

Any Text WCAG AA ✓ Pass

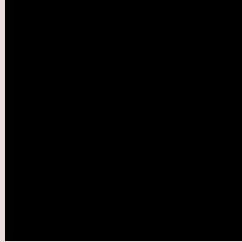
Large Text (above 18pt) WCAG AAA ✓ Pass

Any Text WCAG AAA ✓ Pass

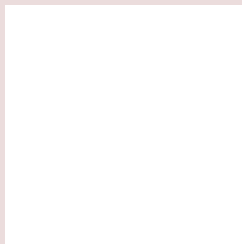
If you want to check with other color combinations, try the [Color Contrast Checker](#).

XYZ 72.7724, 74.0159, 78.1611

Background



This preview shows how black text looks on a background with the XYZ color 72.7724, 74.0159, 78.1611.



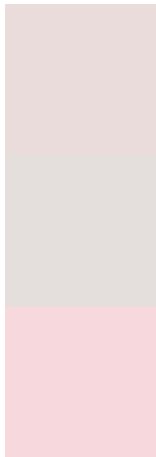
This preview shows how white text looks on a background with the XYZ color 72.7724, 74.0159,

78.1611.

Color Blindness Simulation

Color vision deficiency is a very complex topic, and I could not describe the different causes any better than Wikipedia does, so if you want to learn more, you should check out their [article about color blindness](#).

Dichromacy



Original Color

72.7724, 74.0159, 78.1611

Protanopia

71.1673, 73.9570, 78.9308

Deuteranopia

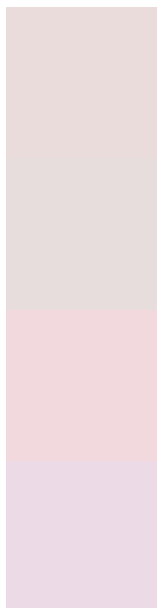
75.6130, 73.9250, 78.6903



Tritanopia

74.9919, 74.1455, 88.9563

Trichromacy



Original Color

72.7724, 74.0159, 78.1611

Protanomaly

71.8626, 73.9223, 78.8875

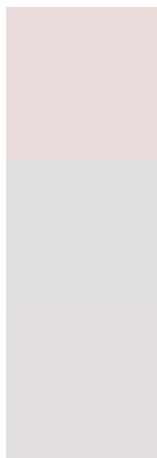
Deuteranomaly

74.4819, 73.7234, 78.7110

Tritanomaly

74.2065, 74.2091, 85.2756

Monochromacy



Original Color

72.7724, 74.0159, 78.1611

Achromatopsia

70.8507, 74.5404, 81.1745

Achromatomaly

71.7019, 74.5970, 80.4316

CSS Examples

Text

The CSS property to change the color of the text to XYZ 72.7724, 74.0159, 78.1611 is called "color". The color property can be set on classes, ids or directly on the HTML element.

This example shows how text in the color rgb(235, 220, 220) looks like.

```
.text, #text, p{  
    color:rgb(235, 220, 220)  
}
```

If you want to add a text shadow in that color use the text-shadow property, you can generate a text shadow directly with our [CSS Text Shadow Generator](#).

Here you see how black text with a 4 pixel rgb(235, 220, 220) colored shadow looks like.

```
.shadow{ text-shadow: 4px 4px 2px rgb(235, 220, 220) }
```

Border

The CSS property to change the border of an element to XYZ 72.7724, 74.0159, 78.1611 is called "border". The border property can be set on classes, ids or directly on the HTML element.

This example shows the color as border, it can be applied via the CSS property "border" or "border-color".

```
.border, #border, table{ border:4px solid rgb(235, 220, 220) }
```


If only the border color should be changed use the property `border-color`.

```
.border{ border-color:rgb(235, 220, 220) }
```

If you want to add a box shadow in that color use:

Here you see how a box with a 4 pixel `rgb(235, 220, 220)` colored shadow looks like.

```
.boxshadow{ -moz-box-shadow:4px 4px 4px  
4px rgb(235, 220, 220); -webkit-box-  
shadow:4px 4px 4px 4px rgb(235, 220, 220);  
box-shadow:4px 4px 4px 4px rgb(235, 220,  
220) }
```

Background

The CSS property to change the background color of an element to XYZ 72.7724, 74.0159, 78.1611 is called "background". The background property can be set on classes, ids or directly on the HTML element.

```
.background, #background, body{  
background: rgb(235, 220, 220) }
```

If only the background color should be changed can be used:

```
.background{ background-color: rgb(235,  
220, 220) }
```

This example shows the color as background, it is applied via the CSS property "background".

To optimize and compress your CSS code, you can use our [online CSS compressor and optimizer](#) based on csstidy. If you want to create a linear or radial gradient as background or border, check our [CSS Gradient Generator](#).

Hey! You found this booklet interesting? Support Converting Colors with the new Membership Option!

The pro membership hides all ads, plus gives you double the colors in the color bucket, and more awesome pro features!

[Learn more, Memberships starting at \\$2.50/m!](#)

**Follow me
on Twitter!**

@ConvertingColor