

Converting Colors

XYZ(72.8478, 72.0483, 76.5219)

Have a look what the booklet for
XYZ(72.8478, 72.0483, 76.5219)
contains.

XYZ(72.8905, 72.1881, 76.4216)	3
<i>Conversions</i>	4
<i>Details</i>	6
<i>Harmonies</i>	12
<i>Previews</i>	24
<i>Color Blindness Simulation</i>	28
<i>CSS Examples</i>	31

Color

**XYZ(72.8905, 72.1881,
76.4216)**

Conversions

Conversions Part 1

Format	Color
Hex	F0D7DA
RGB	240, 215, 218
RGB Percent	94%, 84%, 85%
CMY	0.0588, 0.1568, 0.1451
CMYK	0.00, 0.10, 0.09, 0.06
HSL	353°, 45%, 89%
HSV	353°, 10%, 94%
XYZ	72.8905, 72.1881, 76.4216
YIQ	222.8170, 13.9370, 6.2330

Conversions

Conversions Part 2

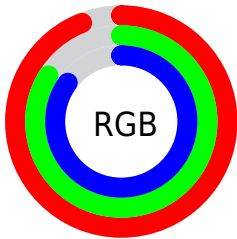
Format	Color
R _Y B	240, 215, 218
Decimal	15783898
CIE Lab	88.06, 9.13, 1.67
CIE LCh	88, 9.286, 10.382
Yxy	72.1881, 0.3291, 0.3259
Android (android.graphics.Color)	4293973978 (0xFFFF0D7DA)
YUV	222.8170, -2.3748, 15.0695
Hunter-Lab	84.9636, 4.4494, 6.1453

Details

The XYZ color **72.8905, 72.1881, 76.4216** is a light color, and the websafe version is hex **FFCCCC**. A complement of this color would be **74.4733, 82.8835, 92.1978**, and the grayscale version is **70.0205, 73.6670, 80.2233**.

A 20% lighter version of the original color is **95.0500, 100.0000, 108.9000**, and **38.9488, 37.9763, 39.9277** is the 20% darker color. If you saturate the color by 10%, you get **64.6316, 59.8151, 60.8890**, and if you desaturate by 10%, it is **82.4022, 86.5013, 94.1117**.

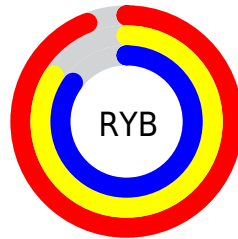
Distribution



Red (94%)

Green (84%)

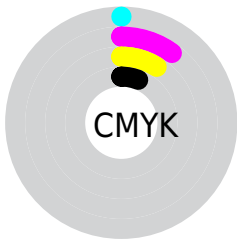
Blue (85%)



Red (94%)

Yellow (84%)

Blue (85%)

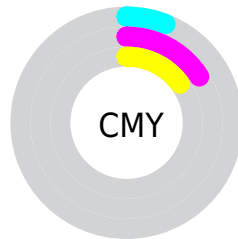


Cyan (0%)

Magenta (10%)

Yellow (9%)

Black (6%)



Cyan (6%)


Magenta (16%)


Yellow (15%)

Brightness & Saturation Gradients


These gradients show how the XYZ color 72.8905, 72.1881, 76.4216 changes by changing the brightness by 10 percent. The first figure shows a shift by +10% for each color and the second figure -10%.

Similar to the brightness gradients but the following saturation gradients show a change of the XYZ color 72.8905, 72.1881, 76.4216 by changing the saturation by 10% instead.


 72.8905, 72.1881,
76.4216

 72.8905, 72.1881,
76.4216


459.7449,
468.1960, 502.1749

 54.1745, 53.3123,
56.2696


122.3257,
122.3239, 130.0882

 38.9724, 38.0522,
40.0136


153.7756,
154.3528, 164.4399

 26.9189, 26.0232,
27.2353


190.2009,
191.5348, 204.3619

 17.6486, 16.8410,
17.5160

231.9669,
234.2544, 250.2726

 10.7961, 10.1212,
10.4373

279.4389,
282.8959, 302.5908

 5.9962, 5.4794,
5.5804

332.9823,

 2.8834, 2.5312,

337.8437, 361.7349

2.5271

392.9625,
399.4823, 428.1234

■ 1.0924, 0.8922,
0.8544

■ 0.0188, 0.0000,
0.0000

■ 72.8905, 72.1881,
76.4216

■ 72.8905, 72.1881,
76.4216

■ 64.6316, 59.8151,
60.8890

■ 82.4022, 86.5013,
94.1117

■ 57.5674, 49.2898,
47.4266

■ 89.7455, 97.2655,
108.6518

■ 51.6442, 40.5262,
35.9483

■ 46.8018, 33.4279,
26.3599

■ 42.9742, 27.8892,
18.5595

■ 40.0887, 23.7924,
12.4358

■ 38.0620, 21.0028,
7.8647

■ 36.7967, 19.3603,
4.7046

■ 36.1544, 18.6130,
2.8343

Harmonies

Analogous

The Analogous color harmony consists of three colors that are next to each other on the color wheel.



72.7057, 72.1881, 82.7701



72.8905, 72.1881, 76.4216



71.9104, 72.1881, 70.9553

Triad

The Triadic color harmony groups three colors that are evenly spaced from another and form a triangle on the color wheel.



72.8905, 72.1881, 76.4216



65.8884, 72.1881, 69.6651



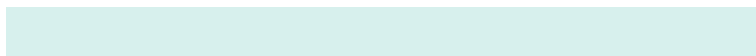
67.1917, 72.1881, 90.6669

Complementary

The Complementary color scheme is a pair of colors which are on the opposite of each other on the color wheel.



72.8905, 72.1881, 76.4216



74.4733, 82.8835, 92.1978

Split Complementary

Split-complementary colors differ from the complementary color scheme. The scheme consists of three colors, the original color and two neighbors of the complement color.



65.4172, 72.1881, 86.7761



72.8905, 72.1881, 76.4216



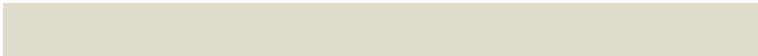
64.6761, 72.1881, 74.5734

Square

The Square scheme is like the rectangle color scheme, but the four colors are evenly spaced on the color wheel.



72.8905, 72.1881, 76.4216



67.8475, 72.1881, 67.1961



64.5055, 72.1881, 80.8206



69.3835, 72.1881, 91.2275

Rectangle

The Rectangle color scheme consists of four colors that form a rectangle on the color wheel.



72.8905, 72.1881, 76.4216



70.7405, 72.1881, 68.4604



64.5055, 72.1881, 80.8206



66.5279, 72.1881, 89.6956

Sweetspot

The Sweet Spot groups the original color and five complimentary colors.



72.8925, 72.1913, 76.4231



91.5926, 94.7897, 102.4930



74.8447, 72.8426, 92.5542



19.4117, 19.9984, 21.5795



0.0000, 0.0000, 0.0000



20.3446, 21.4041, 23.3091

Same Dimension

The Same Dimension uses a secret algorithm to generate beautiful new colors.



72.8925, 72.1913, 76.4231



82.0163, 80.3918, 84.6423



74.9036, 76.8352, 75.1767



15.8499, 15.7897, 16.7656



19.8163, 10.1990, 1.6835



1.6733, 0.8584, 0.2706

Inverse Universe

The Inverse Universe completely reimagines the original color for something new.



72.8925, 72.1913, 76.4231



82.0163, 80.3918, 84.6423



72.2844, 77.7994, 93.6459



15.8499, 15.7897, 16.7656



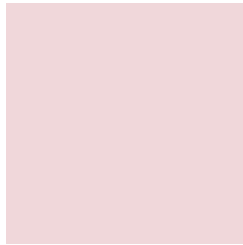
19.8163, 10.1990, 1.6835



1.6733, 0.8584, 0.2706

Previews

White Background



This preview shows how the XYZ color 72.8905, 72.1881, 76.4216 looks on a white background.

Color Contrast Check

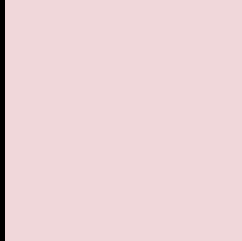
Large Text (above 18pt) WCAG AA × Fail

Any Text WCAG AA × Fail

Large Text (above 18pt) WCAG AAA × Fail

Any Text WCAG AAA × Fail

Black Background



This preview shows how the XYZ color 72.8905, 72.1881, 76.4216 looks on a black background.

Color Contrast Check

Large Text (above 18pt) WCAG AA ✓ Pass

Any Text WCAG AA ✓ Pass

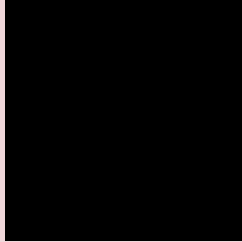
Large Text (above 18pt) WCAG AAA ✓ Pass

Any Text WCAG AAA ✓ Pass

If you want to check with other color combinations, try the [Color Contrast Checker](#).

XYZ 72.8905, 72.1881, 76.4216

Background



This preview shows how black text looks on a background with the XYZ color 72.8905, 72.1881, 76.4216.



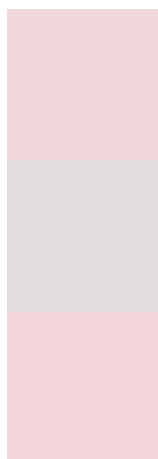
This preview shows how white text looks on a background with the XYZ color 72.8905, 72.1881,

76.4216.

Color Blindness Simulation

Color vision deficiency is a very complex topic, and I could not describe the different causes any better than Wikipedia does, so if you want to learn more, you should check out their [article about color blindness](#).

Dichromacy



Original Color

72.8905, 72.1881, 76.4216

Protanopia

69.6957, 72.4144, 78.7106

Deuteranopia

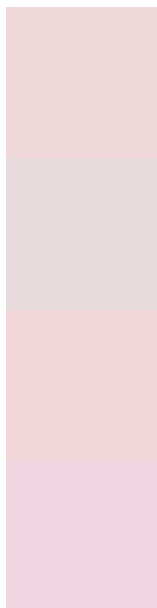
73.6636, 72.2098, 76.3851



Tritanopia

74.6951, 72.1789, 84.8580

Trichromacy



Original Color

72.8905, 72.1881, 76.4216

Protanomaly

70.6228, 72.1331, 77.9110

Deuteranomaly

73.3194, 72.0323, 76.3689

Tritanomaly

74.0497, 72.2849, 82.0010

Monochromacy



Original Color

72.8905, 72.1881, 76.4216

Achromatopsia

70.1384, 73.7910, 80.3584

Achromatomaly

70.9574, 73.0649, 78.7697

CSS Examples

Text

The CSS property to change the color of the text to XYZ 72.8905, 72.1881, 76.4216 is called "color". The color property can be set on classes, ids or directly on the HTML element.

This example shows how text in the color rgb(240, 215, 218) looks like.

```
.text, #text, p{  
    color:rgb(240, 215, 218)  
}
```

If you want to add a text shadow in that color use the text-shadow property, you can generate a text shadow directly with our [CSS Text Shadow Generator](#).

Here you see how black text with a 4 pixel rgb(240, 215, 218) colored shadow looks like.

```
.shadow{ text-shadow: 4px 4px 2px rgb(240, 215, 218) }
```

Border

The CSS property to change the border of an element to XYZ 72.8905, 72.1881, 76.4216 is called "border". The border property can be set on classes, ids or directly on the HTML element.

This example shows the color as border, it can be applied via the CSS property "border" or "border-color".

```
.border, #border, table{ border:4px solid rgb(240, 215, 218) }
```


If only the border color should be changed use the property `border-color`.

```
.border{ border-color:rgb(240, 215, 218) }
```

If you want to add a box shadow in that color use:

Here you see how a box with a 4 pixel `rgb(240, 215, 218)` colored shadow looks like.

```
.boxshadow{ -moz-box-shadow:4px 4px 4px  
4px rgb(240, 215, 218); -webkit-box-  
shadow:4px 4px 4px 4px rgb(240, 215, 218);  
box-shadow:4px 4px 4px 4px rgb(240, 215,  
218) }
```

Background

The CSS property to change the background color of an element to XYZ 72.8905, 72.1881, 76.4216 is called "background". The background property can be set on classes, ids or directly on the HTML element.

```
.background, #background, body{  
background: rgb(240, 215, 218) }
```

If only the background color should be changed can be used:

```
.background{ background-color: rgb(240,  
215, 218) }
```

This example shows the color as background, it is applied via the CSS property "background".

To optimize and compress your CSS code, you can use our [online CSS compressor and optimizer](#) based on csstidy. If you want to create a linear or radial gradient as background or border, check our [CSS Gradient Generator](#).

Hey! You found this booklet interesting? Support Converting Colors with the new Membership Option!

The pro membership hides all ads, plus gives you double the colors in the color bucket, and more awesome pro features!

[Learn more, Memberships starting at \\$2.50/m!](#)

**Follow me
on Twitter!**

@ConvertingColor