

Converting Colors

XYZ(72.9063, 72.4387, 74.7920)

Have a look what the booklet for
XYZ(72.9063, 72.4387, 74.7920)
contains.

XYZ(73.2262, 72.7704, 75.1524)	3
<i>Conversions</i>	4
<i>Details</i>	6
<i>Harmonies</i>	12
<i>Previews</i>	24
<i>Color Blindness Simulation</i>	28
<i>CSS Examples</i>	31

Color

**XYZ(73.2262, 72.7704,
75.1524)**

Conversions

Conversions Part 1

Format	Color
Hex	F1D8D8
RGB	241, 216, 216
RGB Percent	95%, 85%, 85%
CMY	0.0549, 0.1529, 0.1529
CMYK	0.00, 0.10, 0.10, 0.05
HSL	0°, 47%, 90%
HSV	0°, 10%, 95%
XYZ	73.2262, 72.7704, 75.1524
YIQ	223.4750, 14.9000, 5.3000

Conversions

Conversions Part 2

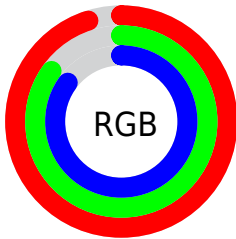
Format	Color
R _Y B	241, 216, 216
Decimal	15849688
CIE Lab	88.34, 8.63, 3.14
CIE LCh	88, 9.188, 20.011
Yxy	72.7704, 0.3311, 0.3291
Android (android.graphics.Color)	4294039768 (0xFFFF1D8D8)
YUV	223.4750, -3.6852, 15.3694
Hunter-Lab	85.3056, 3.9394, 7.4807

Details

The XYZ color **73.2262, 72.7704, 75.1524** is a light color, and the websafe version is hex **FFCCCC**. A complement of this color would be **75.6511, 83.8588, 95.4191**, and the grayscale version is **70.4968, 74.1681, 80.7691**.

A 20% lighter version of the original color is **95.0500, 100.0000, 108.9000**, and **39.1855, 38.3772, 39.0605** is the 20% darker color. If you saturate the color by 10%, you get **64.6094, 60.1620, 58.0191**, and if you desaturate by 10%, it is **83.2094, 87.3784, 94.9974**.

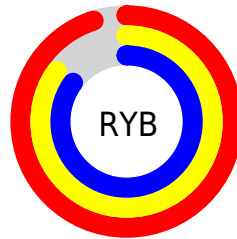
Distribution



Red (95%)

Green (85%)

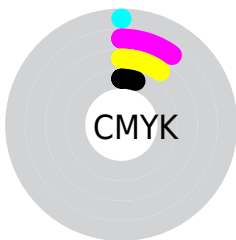
Blue (85%)



Red (95%)

Yellow (85%)

Blue (85%)

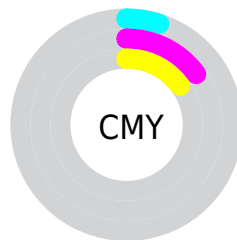


Cyan (0%)

Magenta (10%)

Yellow (10%)

Black (5%)



Cyan (5%)

Magenta (15%)

Yellow (15%)

Brightness & Saturation Gradients

These gradients show how the XYZ color 73.2262, 72.7704, 75.1524 changes by changing the brightness by 10 percent. The first figure shows a shift by +10% for each color and the second figure -10%.

Similar to the brightness gradients but the following saturation gradients show a change of the XYZ color 73.2262, 72.7704, 75.1524 by changing the saturation by 10% instead.

73.2262, 72.7704,
75.1524

73.2262, 72.7704,
75.1524

460.8901,
470.2187, 497.7106

54.4500, 53.7882,
55.2353

122.7997,
123.1512, 128.2771

39.1936, 38.4324,
39.1902

154.3276,
155.3186, 162.3218

27.0918, 26.3185,
26.5988

190.8369,
192.6500, 201.9128

17.7791, 17.0620,
17.0424

232.6928,
235.5296, 247.4686

10.8902, 10.2787,
10.1024

280.2607,
284.3419, 299.4077

6.0598, 5.5842,
5.3604

333.9060,

2.9225, 2.5939,

339.4712, 358.1487

2.3978

393.9940,
401.3020, 424.1102

■ 1.1129, 0.9236,
0.7853

■ 0.0359, 0.0000,
0.0000

■ 73.2262, 72.7704,
75.1524

■ 73.2262, 72.7704,
75.1524

■ 64.6094, 60.1620,
58.0191

■ 83.2094, 87.3784,
94.9974

■ 57.2937, 49.4573,
43.4753

■ 90.0860, 97.4410,
108.6677

■ 51.2178, 40.5666,
31.3966

■ 46.3131, 33.3895,
21.6465

■ 42.5042, 27.8158,
14.0750

■ 39.7069, 23.7224,
8.5150

■ 37.8251, 20.9685,
4.7750

■ 36.7438, 19.3859,
2.6264

■ 36.2765, 18.7019,
1.6978

Harmonies

Analogous

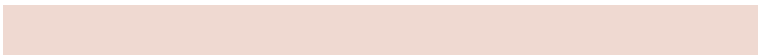
The Analogous color harmony consists of three colors that are next to each other on the color wheel.



73.4255, 72.7704, 81.3593



73.2262, 72.7704, 75.1524



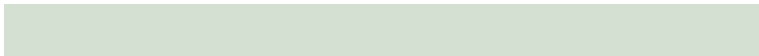
71.9262, 72.7704, 70.2923

Triad

The Triadic color harmony groups three colors that are evenly spaced from another and form a triangle on the color wheel.



73.2262, 72.7704, 75.1524



65.9688, 72.7704, 71.6859



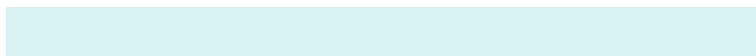
68.4333, 72.7704, 91.8024

Complementary

The Complementary color scheme is a pair of colors which are on the opposite of each other on the color wheel.



73.2262, 72.7704, 75.1524



75.6511, 83.8588, 95.4191

Split Complementary

Split-complementary colors differ from the complementary color scheme. The scheme consists of three colors, the original color and two neighbors of the complement color.



66.4775, 72.7704, 88.9049



73.2262, 72.7704, 75.1524



65.0747, 72.7704, 77.1472

Square

The Square scheme is like the rectangle color scheme, but the four colors are evenly spaced on the color wheel.



73.2262, 72.7704, 75.1524



67.7256, 72.7704, 68.3658



65.2589, 72.7704, 83.4620



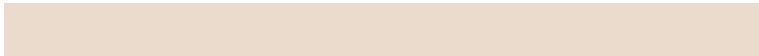
70.6268, 72.7704, 91.1983

Rectangle

The Rectangle color scheme consists of four colors that form a rectangle on the color wheel.



73.2262, 72.7704, 75.1524



70.6253, 72.7704, 68.3644



65.2589, 72.7704, 83.4620



67.7271, 72.7704, 91.2000

Sweetspot

The Sweet Spot groups the original color and five complimentary colors.



73.2282, 72.7736, 75.1540



91.4509, 94.7336, 101.7446



76.7096, 74.1644, 93.4921



19.3736, 19.9833, 21.3786



0.0000, 0.0000, 0.0000



20.3446, 21.4041, 23.3091

Same Dimension

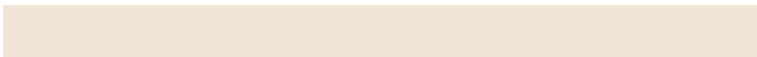
The Same Dimension uses a secret algorithm to generate beautiful new colors.



73.2282, 72.7736, 75.1540



81.5136, 80.1929, 81.9883



76.5524, 79.4220, 76.2620



15.7731, 15.7593, 16.3602



19.6718, 10.1417, 0.9207



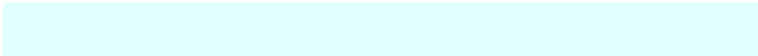
1.6366, 0.8438, 0.0766

Inverse Universe

The Inverse Universe completely reimagines the original color for something new.



75.6511, 83.8588, 95.4191



84.6729, 94.6480, 108.4139



72.0782, 76.7132, 94.2282



16.2472, 17.9285, 20.3258



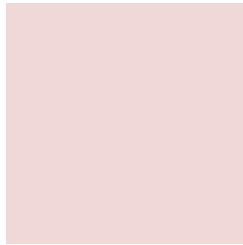
25.6609, 37.5460, 51.0225



2.1348, 3.1236, 4.2446

Previews

White Background



This preview shows how the XYZ color 73.2262, 72.7704, 75.1524 looks on a white background.

Color Contrast Check

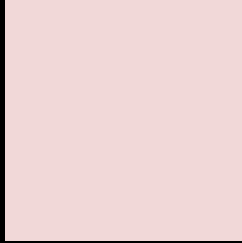
Large Text (above 18pt) WCAG AA × Fail

Any Text WCAG AA × Fail

Large Text (above 18pt) WCAG AAA × Fail

Any Text WCAG AAA × Fail

Black Background



This preview shows how the XYZ color 73.2262, 72.7704, 75.1524 looks on a black background.

Color Contrast Check

Large Text (above 18pt) WCAG AA ✓ Pass

Any Text WCAG AA ✓ Pass

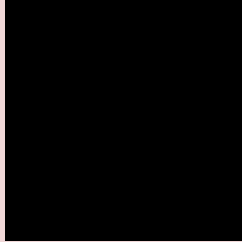
Large Text (above 18pt) WCAG AAA ✓ Pass

Any Text WCAG AAA ✓ Pass

If you want to check with other color combinations, try the [Color Contrast Checker](#).

XYZ 73.2262, 72.7704, 75.1524

Background



This preview shows how black text looks on a background with the XYZ color 73.2262, 72.7704, 75.1524.



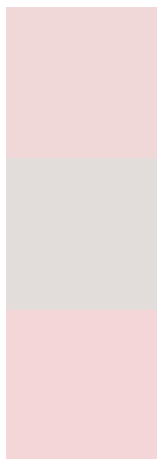
This preview shows how white text looks on a background with the XYZ color 73.2262, 72.7704,

75.1524.

Color Blindness Simulation

Color vision deficiency is a very complex topic, and I could not describe the different causes any better than Wikipedia does, so if you want to learn more, you should check out their [article about color blindness](#).

Dichromacy



Original Color

73.2262, 72.7704, 75.1524

Protanopia

70.0067, 72.9961, 77.4177

Deuteranopia

74.0974, 72.4635, 75.0472



Tritanopia

75.2916, 72.8610, 84.9582

Trichromacy



Original Color

73.2262, 72.7704, 75.1524

Protanomaly

70.9414, 72.7139, 76.6258

Deuteranomaly

74.0033, 72.7918, 75.1156

Tritanomaly

74.5090, 72.9144, 81.3810

Monochromacy



Original Color

73.2262, 72.7704, 75.1524

Achromatopsia

70.1384, 73.7910, 80.3584

Achromatomaly

71.1446, 73.1767, 78.0849

CSS Examples

Text

The CSS property to change the color of the text to XYZ 73.2262, 72.7704, 75.1524 is called "color". The color property can be set on classes, ids or directly on the HTML element.

This example shows how text in the color rgb(241, 216, 216) looks like.

```
.text, #text, p{  
    color:rgb(241, 216, 216)  
}
```

If you want to add a text shadow in that color use the text-shadow property, you can generate a text shadow directly with our [CSS Text Shadow Generator](#).

Here you see how black text with a 4 pixel rgb(241, 216, 216) colored shadow looks like.

```
.shadow{ text-shadow: 4px 4px 2px rgb(241, 216, 216) }
```

Border

The CSS property to change the border of an element to XYZ 73.2262, 72.7704, 75.1524 is called "border". The border property can be set on classes, ids or directly on the HTML element.

This example shows the color as border, it can be applied via the CSS property "border" or "border-color".

```
.border, #border, table{ border:4px solid rgb(241, 216, 216) }
```


If only the border color should be changed use the property border-color.

```
.border{ border-color:rgb(241, 216, 216) }
```

If you want to add a box shadow in that color use:

Here you see how a box with a 4 pixel rgb(241, 216, 216) colored shadow looks like.

```
.boxshadow{ -moz-box-shadow:4px 4px 4px  
4px rgb(241, 216, 216); -webkit-box-  
shadow:4px 4px 4px 4px rgb(241, 216, 216);  
box-shadow:4px 4px 4px 4px rgb(241, 216,  
216) }
```

Background

The CSS property to change the background color of an element to XYZ 73.2262, 72.7704, 75.1524 is called "background". The background property can be set on classes, ids or directly on the HTML element.

```
.background, #background, body{  
background: rgb(241, 216, 216) }
```

If only the background color should be changed can be used:

```
.background{ background-color: rgb(241,  
216, 216) }
```

This example shows the color as background, it is applied via the CSS property "background".

To optimize and compress your CSS code, you can use our [online CSS compressor and optimizer](#) based on csstidy. If you want to create a linear or radial gradient as background or border, check our [CSS Gradient Generator](#).

Hey! You found this booklet interesting? Support Converting Colors with the new Membership Option!

The pro membership hides all ads, plus gives you double the colors in the color bucket, and more awesome pro features!

[Learn more, Memberships starting at \\$2.50/m!](#)

**Follow me
on Twitter!**

@ConvertingColor