

Converting Colors

XYZ(73.1074, 73.9636, 82.9829)

Have a look what the booklet for
XYZ(73.1074, 73.9636, 82.9829)
contains.

XYZ(73.0626, 74.0561, 83.1165)	3
<i>Conversions</i>	4
<i>Details</i>	6
<i>Harmonies</i>	12
<i>Previews</i>	24
<i>Color Blindness Simulation</i>	28
<i>CSS Examples</i>	31

Color

**XYZ(73.0626, 74.0561,
83.1165)**

Conversions

Conversions Part 1

Format	Color
Hex	E9DCE3
RGB	233, 220, 227
RGB Percent	91%, 86%, 89%
CMY	0.0863, 0.1372, 0.1098
CMYK	0.00, 0.06, 0.03, 0.09
HSL	328°, 23%, 89%
HSV	328°, 6%, 91%
XYZ	73.0626, 74.0561, 83.1165
YIQ	224.6850, 5.5010, 4.9330

Conversions

Conversions Part 2

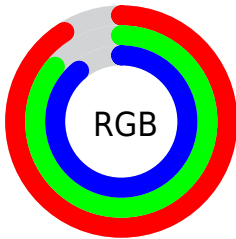
Format	Color
R _Y B	233, 220, 227
Decimal	15326435
CIE Lab	88.95, 5.66, -1.84
CIE LCh	89, 5.949, 342.006
Yxy	74.0561, 0.3173, 0.3217
Android (android.graphics.Color)	4293516515 (0xFFE9DCE3)
YUV	224.6850, 1.1413, 7.2923
Hunter-Lab	86.0559, 0.9512, 2.9742

Details

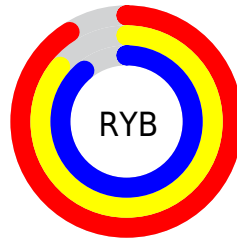
The XYZ color **73.0626, 74.0561, 83.1165** is a light color, and the websafe version is hex **CCCCCC**. A complement of this color would be **72.3844, 78.9864, 83.3862**, and the grayscale version is **71.3330, 75.0479, 81.7271**.

A 20% lighter version of the original color is **95.0500, 100.0000, 108.9000**, and **39.0330, 39.2359, 44.5458** is the 20% darker color. If you saturate the color by 10%, you get **65.9304, 62.0932, 73.6419**, and if you desaturate by 10%, it is **81.1440, 87.7670, 93.3671**.

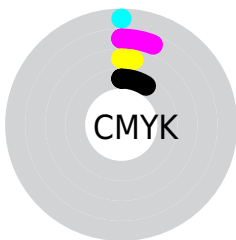
Distribution



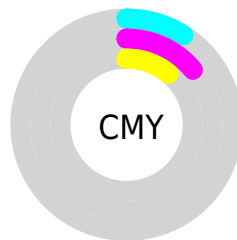
- Red (91%)
- Green (86%)
- Blue (89%)



- Red (91%)
- Yellow (86%)
- Blue (89%)



- Cyan (0%)
- Magenta (6%)
- Yellow (3%)
- Black (9%)



- Cyan (9%)
- Magenta (14%)
- Yellow (11%)

Brightness & Saturation Gradients

These gradients show how the XYZ color 73.0626, 74.0561, 83.1165 changes by changing the brightness by 10 percent. The first figure shows a shift by +10% for each color and the second figure -10%.

Similar to the brightness gradients but the following saturation gradients show a change of the XYZ color 73.0626, 74.0561, 83.1165 by changing the saturation by 10% instead.

73.0626, 74.0561,
83.1165

73.0626, 74.0561,
83.1165

460.3322,
474.6670, 525.3559

54.3157, 54.8400,
61.7451

122.5687,
124.9753, 139.5893

39.0858, 39.2736,
44.3923

154.0587,
157.4472, 175.5278

27.0075, 26.9726,
30.6396

190.5270,
195.1064, 217.1591

17.7155, 17.5527,
20.0684

232.3391,
238.3375, 264.9016

10.8444, 10.6293,
12.2602

279.8603,
287.5246, 319.1741

6.0288, 5.8182,
6.7965

333.4560,

2.9034, 2.7348,

343.0523, 380.3949

3.2586

393.4915,
405.3050, 448.9826

■ 1.1029, 0.9949,
1.2282

■ 0.0275, 0.0000,
0.0018

■ 73.0626, 74.0561,
83.1165

■ 73.0626, 74.0561,
83.1165

■ 65.9304, 62.0932,
73.6419

■ 81.1440, 87.7670,
93.3671

■ 59.7045, 51.7980,
64.9178

■ 86.3881, 95.6532,
103.1367

■ 54.3477, 43.0981,
56.9244

■ 87.4147, 96.0639,
108.5427

■ 49.8179, 35.9119,
49.6387

■ 46.0691, 30.1506,
43.0365

■ 43.0509, 25.7162,
37.0915

■ 40.7062, 22.4979,
31.7751

■ 38.9691, 20.3669,
27.0551

■ 37.7585, 19.1643,
22.8943

Harmonies

Analogous

The Analogous color harmony consists of three colors that are next to each other on the color wheel.



72.2630, 74.0561, 86.6901



73.0626, 74.0561, 83.1165



73.1396, 74.0561, 78.9913

Triad

The Triadic color harmony groups three colors that are evenly spaced from another and form a triangle on the color wheel.



73.0626, 74.0561, 83.1165



69.8120, 74.0561, 73.1024



68.3446, 74.0561, 86.0751

Complementary

The Complementary color scheme is a pair of colors which are on the opposite of each other on the color wheel.



73.0626, 74.0561, 83.1165



72.3844, 78.9864, 83.3862

Split Complementary

Split-complementary colors differ from the complementary color scheme. The scheme consists of three colors, the original color and two neighbors of the complement color.



67.7065, 74.0561, 82.3003



73.0626, 74.0561, 83.1165



68.5459, 74.0561, 74.8677

Square

The Square scheme is like the rectangle color scheme, but the four colors are evenly spaced on the color wheel.



73.0626, 74.0561, 83.1165



71.2495, 74.0561, 73.3040



67.7797, 74.0561, 78.2024



69.5337, 74.0561, 88.4381

Rectangle

The Rectangle color scheme consists of four colors that form a rectangle on the color wheel.



73.0626, 74.0561, 83.1165



72.7695, 74.0561, 76.4921



67.7797, 74.0561, 78.2024



68.0593, 74.0561, 84.9239

Sweetspot

The Sweet Spot groups the original color and five complimentary colors.



73.0647, 74.0593, 83.1181



93.0677, 96.6384, 106.3805



71.6210, 73.2177, 87.4494



19.9411, 20.7198, 22.7963



0.0000, 0.0000, 0.0000



20.3446, 21.4041, 23.3091

Same Dimension

The Same Dimension uses a secret algorithm to generate beautiful new colors.



73.0647, 74.0593, 83.1181



88.3190, 88.6158, 100.2506



72.2046, 73.7153, 78.5890



15.7090, 15.7017, 17.8160



21.2472, 10.7016, 12.3688



1.7169, 0.8597, 1.2267

Inverse Universe

The Inverse Universe completely reimagines the original color for something new.



73.0647, 74.0593, 83.1181



88.3190, 88.6158, 100.2506



73.2717, 79.3413, 88.0586



15.7090, 15.7017, 17.8160



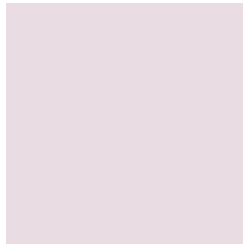
21.2472, 10.7016, 12.3688



1.7169, 0.8597, 1.2267

Previews

White Background



This preview shows how the XYZ color 73.0626, 74.0561, 83.1165 looks on a white background.

Color Contrast Check

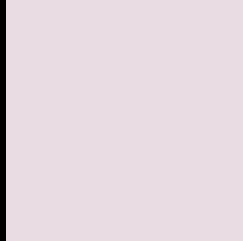
Large Text (above 18pt) WCAG AA × Fail

Any Text WCAG AA × Fail

Large Text (above 18pt) WCAG AAA × Fail

Any Text WCAG AAA × Fail

Black Background



This preview shows how the XYZ color 73.0626, 74.0561, 83.1165 looks on a black background.

Color Contrast Check

Large Text (above 18pt) WCAG AA ✓ Pass

Any Text WCAG AA ✓ Pass

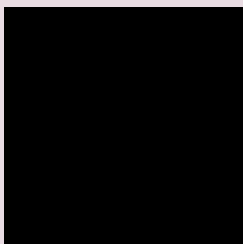
Large Text (above 18pt) WCAG AAA ✓ Pass

Any Text WCAG AAA ✓ Pass

If you want to check with other color combinations, try the [Color Contrast Checker](#).

XYZ 73.0626, 74.0561, 83.1165

Background



This preview shows how black text looks on a background with the XYZ color 73.0626, 74.0561, 83.1165.

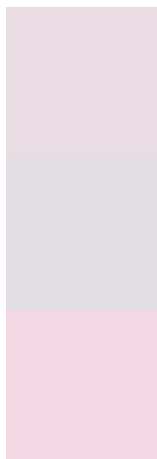


This preview shows how white text looks on a background with the XYZ color 73.0626, 74.0561,

Color Blindness Simulation

Color vision deficiency is a very complex topic, and I could not describe the different causes any better than Wikipedia does, so if you want to learn more, you should check out their [article about color blindness](#).

Dichromacy



Original Color

73.0626, 74.0561, 83.1165

Protanopia

71.4889, 74.0127, 83.9168

Deuteranopia

75.5216, 73.7679, 83.6570



Tritanopia

74.4035, 74.2116, 89.7597

Trichromacy



Original Color

73.0626, 74.0561, 83.1165

Protanomaly

72.1731, 73.9724, 83.8729

Deuteranomaly

74.4130, 73.5779, 83.6787

Tritanomaly

73.9712, 74.0387, 87.4830

Monochromacy



Original Color

73.0626, 74.0561, 83.1165

Achromatopsia

71.5672, 75.2942, 81.9954

Achromatomaly

72.1101, 74.7603, 82.5811

CSS Examples

Text

The CSS property to change the color of the text to XYZ 73.0626, 74.0561, 83.1165 is called "color". The color property can be set on classes, ids or directly on the HTML element.

This example shows how text in the color `rgb(233, 220, 227)` looks like.

```
.text, #text, p{  
    color:rgb(233, 220, 227)  
}
```

If you want to add a text shadow in that color use the text-shadow property, you can generate a text shadow directly with our [CSS Text Shadow Generator](#).

Here you see how black text with a 4 pixel rgb(233, 220, 227) colored shadow looks like.

```
.shadow{ text-shadow: 4px 4px 2px rgb(233, 220, 227) }
```

Border

The CSS property to change the border of an element to XYZ 73.0626, 74.0561, 83.1165 is called "border". The border property can be set on classes, ids or directly on the HTML element.

This example shows the color as border, it can be applied via the CSS property "border" or "border-color".

```
.border, #border, table{ border:4px solid rgb(233, 220, 227) }
```


If only the border color should be changed use the property `border-color`.

```
.border{ border-color:rgb(233, 220, 227) }
```

If you want to add a box shadow in that color use:

Here you see how a box with a 4 pixel `rgb(233, 220, 227)` colored shadow looks like.

```
.boxshadow{ -moz-box-shadow:4px 4px 4px  
4px rgb(233, 220, 227); -webkit-box-  
shadow:4px 4px 4px 4px rgb(233, 220, 227);  
box-shadow:4px 4px 4px 4px rgb(233, 220,  
227) }
```

Background

The CSS property to change the background color of an element to XYZ 73.0626, 74.0561, 83.1165 is called "background". The background property can be set on classes, ids or directly on the HTML element.

```
.background, #background, body{  
background: rgb(233, 220, 227) }
```

If only the background color should be changed can be used:

```
.background{ background-color: rgb(233,  
220, 227) }
```

This example shows the color as background, it is applied via the CSS property "background".

To optimize and compress your CSS code, you can use our [online CSS compressor and optimizer](#) based on csstidy. If you want to create a linear or radial gradient as background or border, check our [CSS Gradient Generator](#).

Hey! You found this booklet interesting? Support Converting Colors with the new Membership Option!

The pro membership hides all ads, plus gives you double the colors in the color bucket, and more awesome pro features!

[Learn more, Memberships starting at \\$2.50/m!](#)

**Follow me
on Twitter!**

@ConvertingColor