

Converting Colors

XYZ(73.3657, 73.0372, 79.4655)

Have a look what the booklet for
XYZ(73.3657, 73.0372, 79.4655)
contains.

XYZ(73.2576, 73.0768, 79.3514)	3
<i>Conversions</i>	4
<i>Details</i>	6
<i>Harmonies</i>	12
<i>Previews</i>	24
<i>Color Blindness Simulation</i>	28
<i>CSS Examples</i>	31

Color

**XYZ(73.2576, 73.0768,
79.3514)**

Conversions

Conversions Part 1

Format	Color
Hex	EED9DE
RGB	238, 217, 222
RGB Percent	93%, 85%, 87%
CMY	0.0667, 0.1490, 0.1294
CMYK	0.00, 0.09, 0.07, 0.07
HSL	346°, 38%, 89%
HSV	346°, 9%, 93%
XYZ	73.2576, 73.0768, 79.3514
YIQ	223.8490, 10.9110, 6.0070

Conversions

Conversions Part 2

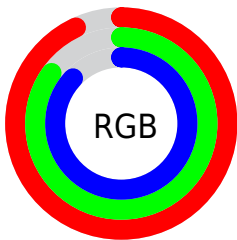
Format	Color
R _Y B	238, 217, 222
Decimal	15653342
CIE Lab	88.48, 8.07, 0.16
CIE LCh	88, 8.070, 1.163
Yxy	73.0768, 0.3246, 0.3238
Android (android.graphics.Color)	4293843422 (0xFFEED9DE)
YUV	223.8490, -0.9116, 12.4104
Hunter-Lab	85.4850, 3.3695, 4.8036

Details

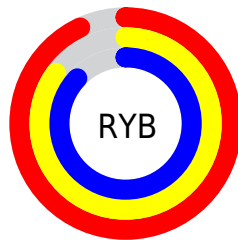
The XYZ color **73.2576, 73.0768, 79.3514** is a light color, and the websafe version is hex **CCCCCC**. A complement of this color would be **73.9006, 81.7859, 88.9861**, and the grayscale version is **70.7463, 74.4307, 81.0550**.

A 20% lighter version of the original color is **95.0500, 100.0000, 108.9000**, and **39.1868, 38.5758, 41.9397** is the 20% darker color. If you saturate the color by 10%, you get **65.2586, 60.7614, 65.3302**, and if you desaturate by 10%, it is **82.4069, 87.2725, 95.0479**.

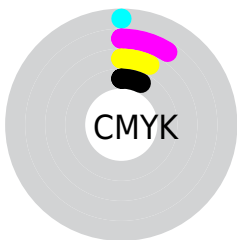
Distribution



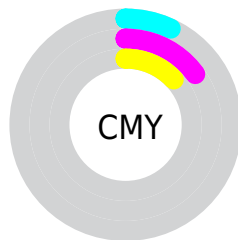
- Red (93%)
- Green (85%)
- Blue (87%)



- Red (93%)
- Yellow (85%)
- Blue (87%)



- Cyan (0%)
- Magenta (9%)
- Yellow (7%)
- Black (7%)



- Cyan (7%)
- Magenta (15%)
- Yellow (13%)

Brightness & Saturation Gradients

These gradients show how the XYZ color 73.2576, 73.0768, 79.3514 changes by changing the brightness by 10 percent. The first figure shows a shift by +10% for each color and the second figure -10%.

Similar to the brightness gradients but the following saturation gradients show a change of the XYZ color 73.2576, 73.0768, 79.3514 by changing the saturation by 10% instead.

73.2576, 73.0768,
79.3514

73.2576, 73.0768,
79.3514

460.9971,
471.2809, 512.3933

54.4758, 54.0388,
58.6617

122.8440,
123.5862, 134.2566

39.2143, 38.6327,
41.9227

154.3793,
155.8264, 169.3092

27.1080, 26.4741,
28.7156

190.8964,
193.2361, 209.9866

17.7913, 17.1786,
18.6221

232.7607,
236.1997, 256.7072

10.8991, 10.3619,
11.2235

280.3376,
285.1016, 309.8897

6.0658, 5.6396,
6.1013

333.9924,

2.9262, 2.6272,

340.3262, 369.9525

2.8370

394.0904,
402.2578, 437.3142

■ 1.1148, 0.9404,
1.0120

■ 0.0375, 0.0000,
0.0000

■ 73.2576, 73.0768,
79.3514

■ 73.2576, 73.0768,
79.3514

■ 65.2586, 60.7614,
65.3302

■ 82.4069, 87.2725,
95.0479

■ 58.3578, 50.2380,
52.9238

■ 89.0703, 96.9174,
108.6202

■ 52.5083, 41.4256,
42.0746

■ 47.6571, 34.2331,
32.7199

■ 43.7467, 28.5610,
24.7926

■ 40.7136, 24.2986,
18.2202

■ 38.4858, 21.3203,
12.9235

■ 36.9795, 19.4777,
8.8143

■ 36.0742, 18.5516,
5.7858

Harmonies

Analogous

The Analogous color harmony consists of three colors that are next to each other on the color wheel.



72.7797, 73.0768, 84.8381



73.2576, 73.0768, 79.3514



72.7015, 73.0768, 74.1620

Triad

The Triadic color harmony groups three colors that are evenly spaced from another and form a triangle on the color wheel.



73.2576, 73.0768, 79.3514



67.5430, 73.0768, 70.7642



67.6719, 73.0768, 89.3079

Complementary

The Complementary color scheme is a pair of colors which are on the opposite of each other on the color wheel.



73.2576, 73.0768, 79.3514



73.9006, 81.7859, 88.9861

Split Complementary

Split-complementary colors differ from the complementary color scheme. The scheme consists of three colors, the original color and two neighbors of the complement color.



66.3110, 73.0768, 85.2310



73.2576, 73.0768, 79.3514



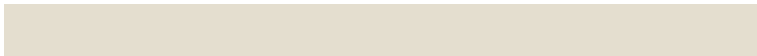
66.2376, 73.0768, 74.5212

Square

The Square scheme is like the rectangle color scheme, but the four colors are evenly spaced on the color wheel.



73.2576, 73.0768, 79.3514



69.3816, 73.0768, 69.3488



65.7908, 73.0768, 79.7854



69.5331, 73.0768, 90.7453

Rectangle

The Rectangle color scheme consists of four colors that form a rectangle on the color wheel.



73.2576, 73.0768, 79.3514



71.8252, 73.0768, 71.5261



65.7908, 73.0768, 79.7854



67.1420, 73.0768, 88.1916

Sweetspot

The Sweet Spot groups the original color and five complimentary colors.



73.2597, 73.0800, 79.3530



91.7334, 94.8460, 103.2341



73.7706, 73.0837, 91.1084



19.4495, 20.0135, 21.7788



0.0000, 0.0000, 0.0000



20.3446, 21.4041, 23.3091

Same Dimension

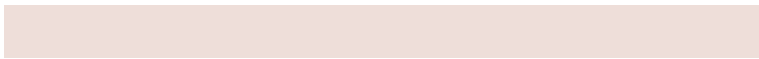
The Same Dimension uses a secret algorithm to generate beautiful new colors.



73.2597, 73.0800, 79.3530



83.4928, 82.0898, 89.0037



73.9744, 75.5653, 76.3362



15.9269, 15.8205, 17.1715



20.1202, 10.3205, 3.2838



1.7114, 0.8736, 0.4711

Inverse Universe

The Inverse Universe completely reimagines the original color for something new.



73.2597, 73.0800, 79.3530



83.4928, 82.0898, 89.0037



73.1186, 79.0634, 92.2969



15.9269, 15.8205, 17.1715



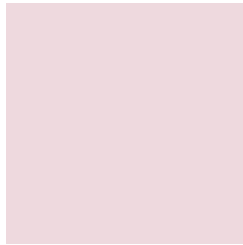
20.1202, 10.3205, 3.2838



1.7114, 0.8736, 0.4711

Previews

White Background



This preview shows how the XYZ color 73.2576, 73.0768, 79.3514 looks on a white background.

Color Contrast Check

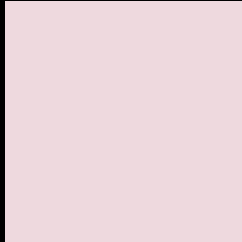
Large Text (above 18pt) WCAG AA × Fail

Any Text WCAG AA × Fail

Large Text (above 18pt) WCAG AAA × Fail

Any Text WCAG AAA × Fail

Black Background



This preview shows how the XYZ color 73.2576, 73.0768, 79.3514 looks on a black background.

Color Contrast Check

Large Text (above 18pt) WCAG AA ✓ Pass

Any Text WCAG AA ✓ Pass

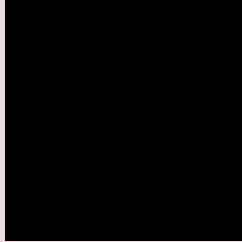
Large Text (above 18pt) WCAG AAA ✓ Pass

Any Text WCAG AAA ✓ Pass

If you want to check with other color combinations, try the [Color Contrast Checker](#).

XYZ 73.2576, 73.0768, 79.3514

Background



This preview shows how black text looks on a background with the XYZ color 73.2576, 73.0768, 79.3514.



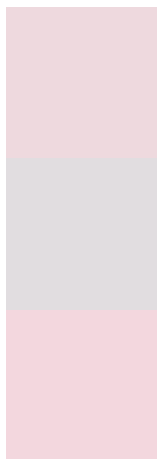
This preview shows how white text looks on a background with the XYZ color 73.2576, 73.0768,

79.3514.

Color Blindness Simulation

Color vision deficiency is a very complex topic, and I could not describe the different causes any better than Wikipedia does, so if you want to learn more, you should check out their [article about color blindness](#).

Dichromacy



Original Color

73.2576, 73.0768, 79.3514

Protanopia

70.3623, 73.1023, 80.9227

Deuteranopia

74.4474, 72.9295, 79.2602



Tritanopia

74.4625, 72.7778, 86.4669

Trichromacy



Original Color

73.2576, 73.0768, 79.3514

Protanomaly

71.5456, 73.3371, 80.1967

Deuteranomaly

74.0163, 73.0864, 79.3133

Tritanomaly

74.1561, 73.0639, 83.5931

Monochromacy



Original Color

73.2576, 73.0768, 79.3514

Achromatopsia

70.8507, 74.5404, 81.1745

Achromatomaly

71.4888, 73.6986, 80.2694

CSS Examples

Text

The CSS property to change the color of the text to XYZ 73.2576, 73.0768, 79.3514 is called "color". The color property can be set on classes, ids or directly on the HTML element.

This example shows how text in the color rgb(238, 217, 222) looks like.

```
.text, #text, p{  
    color:rgb(238, 217, 222)  
}
```

If you want to add a text shadow in that color use the text-shadow property, you can generate a text shadow directly with our [CSS Text Shadow Generator](#).

Here you see how black text with a 4 pixel rgb(238, 217, 222) colored shadow looks like.

```
.shadow{ text-shadow: 4px 4px 2px rgb(238, 217, 222) }
```

Border

The CSS property to change the border of an element to XYZ 73.2576, 73.0768, 79.3514 is called "border". The border property can be set on classes, ids or directly on the HTML element.

This example shows the color as border, it can be applied via the CSS property "border" or "border-color".

```
.border, #border, table{ border:4px solid rgb(238, 217, 222) }
```


If only the border color should be changed use the property `border-color`.

```
.border{ border-color:rgb(238, 217, 222) }
```

If you want to add a box shadow in that color use:

Here you see how a box with a 4 pixel `rgb(238, 217, 222)` colored shadow looks like.

```
.boxshadow{ -moz-box-shadow:4px 4px 4px  
4px rgb(238, 217, 222); -webkit-box-  
shadow:4px 4px 4px 4px rgb(238, 217, 222);  
box-shadow:4px 4px 4px 4px rgb(238, 217,  
222) }
```

Background

The CSS property to change the background color of an element to XYZ 73.2576, 73.0768, 79.3514 is called "background". The background property can be set on classes, ids or directly on the HTML element.

```
.background, #background, body{  
background: rgb(238, 217, 222) }
```

If only the background color should be changed can be used:

```
.background{ background-color: rgb(238,  
217, 222) }
```

This example shows the color as background, it is applied via the CSS property "background".

To optimize and compress your CSS code, you can use our [online CSS compressor and optimizer](#) based on csstidy. If you want to create a linear or radial gradient as background or border, check our [CSS Gradient Generator](#).

Hey! You found this booklet interesting? Support Converting Colors with the new Membership Option!

The pro membership hides all ads, plus gives you double the colors in the color bucket, and more awesome pro features!

[Learn more, Memberships starting at \\$2.50/m!](#)

**Follow me
on Twitter!**

@ConvertingColor