

Converting Colors

XYZ(73.4891, 74.0463, 73.8758)

Have a look what the booklet for
XYZ(73.4891, 74.0463, 73.8758)
contains.

XYZ(73.4043, 74.0433, 74.0413)	3
<i>Conversions</i>	4
<i>Details</i>	6
<i>Harmonies</i>	12
<i>Previews</i>	24
<i>Color Blindness Simulation</i>	28
<i>CSS Examples</i>	31

Color

**XYZ(73.4043, 74.0433,
74.0413)**

Conversions

Conversions Part 1

Format	Color
Hex	F0DBD6
RGB	240, 219, 214
RGB Percent	94%, 86%, 84%
CMY	0.0588, 0.1412, 0.1608
CMYK	0.00, 0.09, 0.11, 0.06
HSL	12°, 46%, 89%
HSV	12°, 11%, 94%
XYZ	73.4043, 74.0433, 74.0413
YIQ	224.7090, 14.1210, 2.8970

Conversions

Conversions Part 2

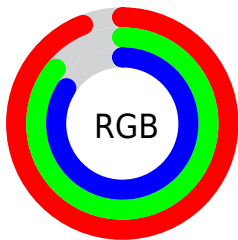
Format	Color
R _Y B	240, 220, 214
Decimal	15784918
CIE Lab	88.94, 6.40, 5.06
CIE LCh	89, 8.158, 38.355
Yxy	74.0433, 0.3314, 0.3343
Android (android.graphics.Color)	4293974998 (0xFFF0DBD6)
YUV	224.7090, -5.2795, 13.4102
Hunter-Lab	86.0484, 1.6861, 9.2172

Details

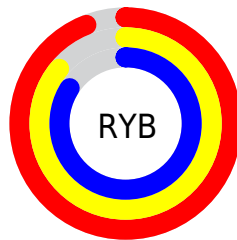
The XYZ color **73.4043, 74.0433, 74.0413** is a light color, and the websafe version is hex **CCCCCC**. A complement of this color would be **73.1678, 80.0027, 94.0246**, and the grayscale version is **71.3904, 75.1083, 81.7929**.

A 20% lighter version of the original color is **95.0500, 100.0000, 108.9000**, and **39.3006, 39.2445, 38.3045** is the 20% darker color. If you saturate the color by 10%, you get **65.7975, 63.3782, 57.4814**, and if you desaturate by 10%, it is **82.0556, 86.0730, 93.1792**.

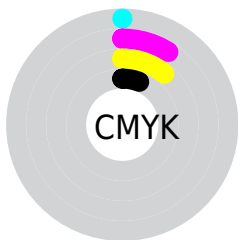
Distribution



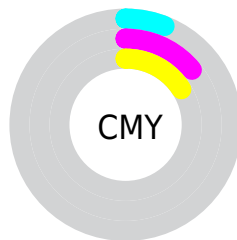
- Red (94%)
- Green (86%)
- Blue (84%)



- Red (94%)
- Yellow (86%)
- Blue (84%)



- Cyan (0%)
- Magenta (9%)
- Yellow (11%)
- Black (6%)

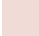



- Cyan (6%)
- Magenta (14%)
- Yellow (16%)

Brightness & Saturation Gradients


These gradients show how the XYZ color 73.4043, 74.0433, 74.0413 changes by changing the brightness by 10 percent. The first figure shows a shift by +10% for each color and the second figure -10%.

Similar to the brightness gradients but the following saturation gradients show a change of the XYZ color 73.4043, 74.0433, 74.0413 by changing the saturation by 10% instead.


 73.4043, 74.0433,
74.0413

 73.4043, 74.0433,
74.0413


461.4970,
474.6228, 493.7831

 54.5962, 54.8295,
54.3309


123.0510,
124.9572, 126.6889

 39.3111, 39.2652,
38.4713


154.6204,
157.4260, 160.4632

 27.1836, 26.9661,
26.0440


191.1741,
195.0820, 199.7625

 17.8485, 17.5478,
16.6305

233.0777,
238.3095, 245.0053

 10.9403, 10.6258,
9.8122

280.6964,
287.4930, 296.6103

 6.0937, 5.8158,
5.1707

334.3956,

 2.9433, 2.7334,

343.0167, 354.9959

2.2873

394.5407,
405.2652, 420.5806

■ 1.1239, 0.9942,
0.7241

■ 0.0449, 0.0000,
0.0000

■ 73.4043, 74.0433,
74.0413

■ 73.4043, 74.0433,
74.0413

■ 65.7975, 63.3782,
57.4814

■ 82.0556, 86.0730,
93.1792

■ 59.1892, 54.0198,
43.3843

■ 89.7456, 97.2655,
108.6518

■ 53.5391, 45.9204,
31.6334

■ 48.8018, 39.0258,
22.1005

■ 44.9280, 33.2776,
14.6452

■ 41.8636, 28.6127,
9.1108

■ 39.5480, 24.9613,
5.3185

■ 37.9115, 22.2455,
3.0548

■ 36.9201, 20.4945,
2.0099

Harmonies

Analogous

The Analogous color harmony consists of three colors that are next to each other on the color wheel.



74.2108, 74.0433, 79.0464



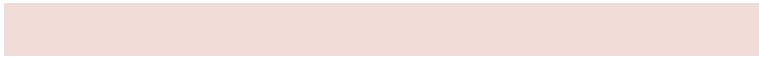
73.4043, 74.0433, 74.0413



71.7898, 74.0433, 70.9034

Triad

The Triadic color harmony groups three colors that are evenly spaced from another and form a triangle on the color wheel.



73.4043, 74.0433, 74.0413



66.8957, 74.0433, 76.6647



70.9306, 74.0433, 91.8982

Complementary

The Complementary color scheme is a pair of colors which are on the opposite of each other on the color wheel.



73.4043, 74.0433, 74.0413



73.1678, 80.0027, 94.0246

Split Complementary

Split-complementary colors differ from the complementary color scheme. The scheme consists of three colors, the original color and two neighbors of the complement color.



68.9808, 74.0433, 91.1873



73.4043, 74.0433, 74.0413



66.6755, 74.0433, 82.2155

Square

The Square scheme is like the rectangle color scheme, but the four colors are evenly spaced on the color wheel.



73.4043, 74.0433, 74.0413



68.0395, 74.0433, 72.3679



67.4320, 74.0433, 87.5785



72.7653, 74.0433, 89.4780

Rectangle

The Rectangle color scheme consists of four colors that form a rectangle on the color wheel.



73.4043, 74.0433, 74.0413



70.4853, 74.0433, 70.2040



67.4320, 74.0433, 87.5785



70.2667, 74.0433, 92.0197

Sweetspot

The Sweet Spot groups the original color and five complimentary colors.



73.4064, 74.0466, 74.0429



91.9034, 95.6386, 101.8954



75.0118, 72.6311, 88.8407



19.4951, 20.2264, 21.4191



0.0000, 0.0000, 0.0000



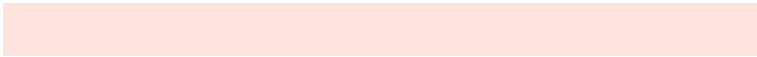
20.3446, 21.4041, 23.3091

Same Dimension

The Same Dimension uses a secret algorithm to generate beautiful new colors.



73.4064, 74.0466, 74.0429



82.2115, 82.1395, 80.5234



76.8647, 80.9632, 75.1957



16.0190, 16.2511, 16.4422



20.2825, 11.3630, 1.1243



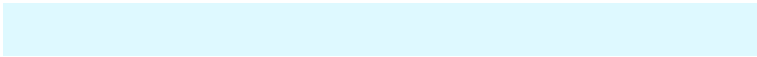
1.7538, 1.0784, 0.1157

Inverse Universe

The Inverse Universe completely reimagines the original color for something new.



73.1678, 80.0027, 94.0246



81.8865, 90.2424, 107.7104



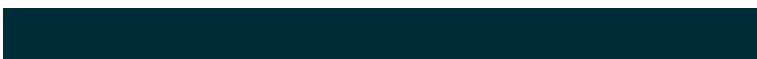
69.6440, 72.9551, 92.8500



15.9738, 17.3817, 20.2347



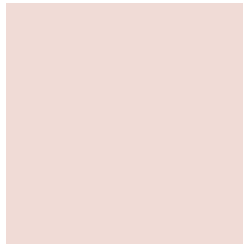
19.2410, 24.7063, 48.8826



1.6662, 2.1864, 4.0884

Previews

White Background



This preview shows how the XYZ color 73.4043, 74.0433, 74.0413 looks on a white background.

Color Contrast Check

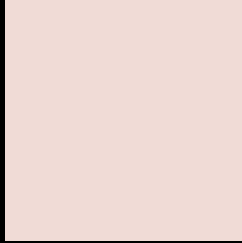
Large Text (above 18pt) WCAG AA × Fail

Any Text WCAG AA × Fail

Large Text (above 18pt) WCAG AAA × Fail

Any Text WCAG AAA × Fail

Black Background



This preview shows how the XYZ color 73.4043, 74.0433, 74.0413 looks on a black background.

Color Contrast Check

Large Text (above 18pt) WCAG AA ✓ Pass

Any Text WCAG AA ✓ Pass

Large Text (above 18pt) WCAG AAA ✓ Pass

Any Text WCAG AAA ✓ Pass

If you want to check with other color combinations, try the [Color Contrast Checker](#).

XYZ 73.4043, 74.0433, 74.0413

Background



This preview shows how black text looks on a background with the XYZ color 73.4043, 74.0433, 74.0413.

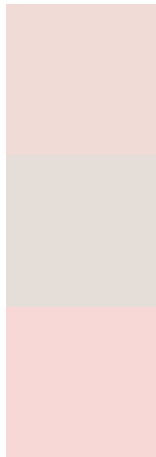


This preview shows how white text looks on a background with the XYZ color 73.4043, 74.0433, 74.0413.

Color Blindness Simulation

Color vision deficiency is a very complex topic, and I could not describe the different causes any better than Wikipedia does, so if you want to learn more, you should check out their [article about color blindness](#).

Dichromacy



Original Color

73.4043, 74.0433, 74.0413

Protanopia

70.8290, 73.8584, 75.4888

Deuteranopia

75.5330, 73.9745, 74.5875



Tritanopia

76.2260, 74.0496, 87.3663

Trichromacy



Original Color

73.4043, 74.0433, 74.0413

Protanomaly

71.7265, 73.9428, 74.7820

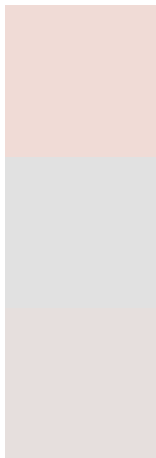
Deuteranomaly

74.7348, 73.9445, 74.6237

Tritanomaly

75.1583, 73.9939, 82.2725

Monochromacy



Original Color

73.4043, 74.0433, 74.0413

Achromatopsia

71.5672, 75.2942, 81.9954

Achromatomaly

72.0719, 74.8188, 79.0495

CSS Examples

Text

The CSS property to change the color of the text to XYZ 73.4043, 74.0433, 74.0413 is called "color". The color property can be set on classes, ids or directly on the HTML element.

This example shows how text in the color `rgb(240, 219, 214)` looks like.

```
.text, #text, p{  
    color:rgb(240, 219, 214)  
}
```

If you want to add a text shadow in that color use the text-shadow property, you can generate a text shadow directly with our [CSS Text Shadow Generator](#).

Here you see how black text with a 4 pixel rgb(240, 219, 214) colored shadow looks like.

```
.shadow{ text-shadow: 4px 4px 2px rgb(240, 219, 214) }
```

Border

The CSS property to change the border of an element to XYZ 73.4043, 74.0433, 74.0413 is called "border". The border property can be set on classes, ids or directly on the HTML element.

This example shows the color as border, it can be applied via the CSS property "border" or "border-color".

```
.border, #border, table{ border:4px solid rgb(240, 219, 214) }
```


If only the border color should be changed use the property `border-color`.

```
.border{ border-color:rgb(240, 219, 214) }
```

If you want to add a box shadow in that color use:

Here you see how a box with a 4 pixel `rgb(240, 219, 214)` colored shadow looks like.

```
.boxshadow{ -moz-box-shadow:4px 4px 4px  
4px rgb(240, 219, 214); -webkit-box-  
shadow:4px 4px 4px 4px rgb(240, 219, 214);  
box-shadow:4px 4px 4px 4px rgb(240, 219,  
214) }
```

Background

The CSS property to change the background color of an element to XYZ 73.4043, 74.0433, 74.0413 is called "background". The background property can be set on classes, ids or directly on the HTML element.

```
.background, #background, body{  
background: rgb(240, 219, 214) }
```

If only the background color should be changed can be used:

```
.background{ background-color: rgb(240,  
219, 214) }
```

This example shows the color as background, it is applied via the CSS property "background".

To optimize and compress your CSS code, you can use our [online CSS compressor and optimizer](#) based on csstidy. If you want to create a linear or radial gradient as background or border, check our [CSS Gradient Generator](#).

Hey! You found this booklet interesting? Support Converting Colors with the new Membership Option!

The pro membership hides all ads, plus gives you double the colors in the color bucket, and more awesome pro features!

[Learn more, Memberships starting at \\$2.50/m!](#)

**Follow me
on Twitter!**

@ConvertingColor