

Converting Colors

XYZ(73.5392, 74.3893, 79.4693)

Have a look what the booklet for
XYZ(73.5392, 74.3893, 79.4693)
contains.

XYZ(73.7031, 74.4649, 79.5958)	3
<i>Conversions</i>	4
<i>Details</i>	6
<i>Harmonies</i>	12
<i>Previews</i>	24
<i>Color Blindness Simulation</i>	28
<i>CSS Examples</i>	31

Color

**XYZ(73.7031, 74.4649,
79.5958)**

Conversions

Conversions Part 1

Format	Color
Hex	EDDCDE
RGB	237, 220, 222
RGB Percent	93%, 86%, 87%
CMY	0.0706, 0.1372, 0.1294
CMYK	0.00, 0.07, 0.06, 0.07
HSL	353°, 32%, 90%
HSV	353°, 7%, 93%
XYZ	73.7031, 74.4649, 79.5958
YIQ	225.3110, 9.4900, 4.2260

Conversions

Conversions Part 2

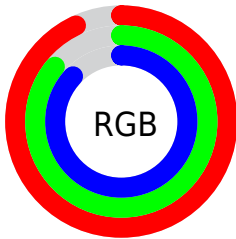
Format	Color
R _Y B	237, 220, 222
Decimal	15588574
CIE Lab	89.14, 6.16, 1.11
CIE LCh	89, 6.262, 10.235
Yxy	74.4649, 0.3236, 0.3269
Android (android.graphics.Color)	4293778654 (0xFFEDDCDE)
YUV	225.3110, -1.6323, 10.2513
Hunter-Lab	86.2930, 1.4444, 5.7167

Details

The XYZ color **73.7031, 74.4649, 79.5958** is a light color, and the websafe version is hex **CCCCCC**. A complement of this color would be **74.7977, 81.7841, 90.4451**, and the grayscale version is **71.8001, 75.5393, 82.2623**.

A 20% lighter version of the original color is **95.0500, 100.0000, 108.9000**, and **39.4862, 39.5240, 42.1070** is the 20% darker color. If you saturate the color by 10%, you get **65.2870, 61.8436, 63.8065**, and if you desaturate by 10%, it is **83.3531, 88.9954, 97.5142**.

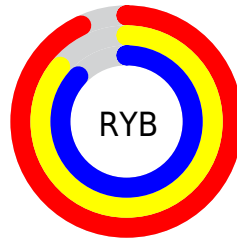
Distribution



Red (93%)

Green (86%)

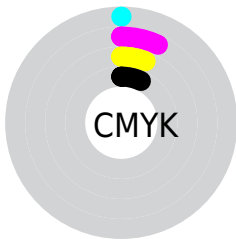
Blue (87%)



Red (93%)

Yellow (86%)

Blue (87%)

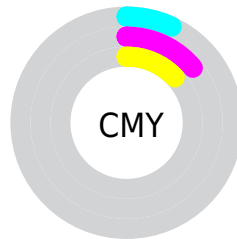


Cyan (0%)

Magenta (7%)

Yellow (6%)

Black (7%)



Cyan (7%)

Magenta (14%)

Yellow (13%)

Brightness & Saturation Gradients

These gradients show how the XYZ color 73.7031, 74.4649, 79.5958 changes by changing the brightness by 10 percent. The first figure shows a shift by +10% for each color and the second figure -10%.

Similar to the brightness gradients but the following saturation gradients show a change of the XYZ color 73.7031, 74.4649, 79.5958 by changing the saturation by 10% instead.

73.7031, 74.4649,
79.5958

73.7031, 74.4649,
79.5958

462.5142,
476.0763, 513.2404

54.8415, 55.1746,
58.8616

123.4726,
125.5546, 134.6036

39.5082, 39.5416,
42.0824

155.1112,
158.1228, 169.7142

27.3378, 27.1813,
28.8398

191.7395,
195.8859, 210.4540

17.9650, 17.7094,
18.7151

233.7229,
239.2280, 257.2416

11.0244, 10.7416,
11.2899

281.4267,
288.5338, 310.4955

6.1506, 5.8933,
6.1456

335.2163,

2.9784, 2.7803,

344.1875, 370.6343

2.8636

395.4570,
406.5735, 438.0764

■ 1.1424, 1.0182,
1.0254

■ 0.0601, 0.0000,
0.0000

■ 73.7031, 74.4649,
79.5958

■ 73.7031, 74.4649,
79.5958

■ 65.2870, 61.8436,
63.8065

■ 83.3531, 88.9954,
97.5142

■ 58.0488, 51.0429,
50.0622

■ 88.7355, 96.7447,
108.6045

■ 51.9377, 41.9816,
38.2808

■ 46.8967, 34.5686,
28.3722

■ 42.8638, 28.7047,
20.2396

■ 39.7704, 24.2796,
13.7775

■ 37.5396, 21.1689,
8.8690

■ 36.0816, 19.2265,
5.3819

■ 35.2834, 18.2643,
3.1601

Harmonies

Analogous

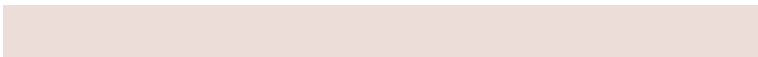
The Analogous color harmony consists of three colors that are next to each other on the color wheel.



73.5736, 74.4649, 83.9541



73.7031, 74.4649, 79.5958



73.0399, 74.4649, 75.7728

Triad

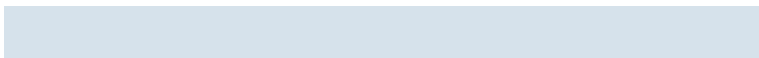
The Triadic color harmony groups three colors that are evenly spaced from another and form a triangle on the color wheel.



73.7031, 74.4649, 79.5958



68.8985, 74.4649, 74.8333



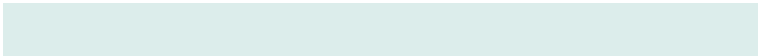
69.7892, 74.4649, 89.2464

Complementary

The Complementary color scheme is a pair of colors which are on the opposite of each other on the color wheel.



73.7031, 74.4649, 79.5958



74.7977, 81.7841, 90.4451

Split Complementary

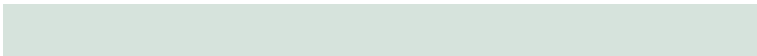
Split-complementary colors differ from the complementary color scheme. The scheme consists of three colors, the original color and two neighbors of the complement color.



68.5606, 74.4649, 86.6286



73.7031, 74.4649, 79.5958



68.0515, 74.4649, 78.2715

Square

The Square scheme is like the rectangle color scheme, but the four colors are evenly spaced on the color wheel.



73.7031, 74.4649, 79.5958



70.2566, 74.4649, 73.0893



67.9287, 74.4649, 82.5818



71.2992, 74.4649, 89.6320

Rectangle

The Rectangle color scheme consists of four colors that form a rectangle on the color wheel.



73.7031, 74.4649, 79.5958



72.2431, 74.4649, 74.0027



67.9287, 74.4649, 82.5818



69.3302, 74.4649, 88.5940

Sweetspot

The Sweet Spot groups the original color and five complimentary colors.



73.7052, 74.4682, 79.5974



92.7282, 96.5026, 104.5927



75.0545, 74.9210, 90.6271



19.8720, 20.6921, 22.4323



0.0000, 0.0000, 0.0000



20.3446, 21.4041, 23.3091

Same Dimension

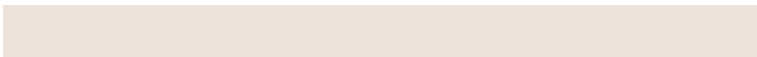
The Same Dimension uses a secret algorithm to generate beautiful new colors.



73.7052, 74.4682, 79.5974



85.0693, 84.9848, 90.3243



75.1055, 77.6943, 78.7521



15.1374, 15.0828, 16.0089



19.2056, 9.8849, 1.6179



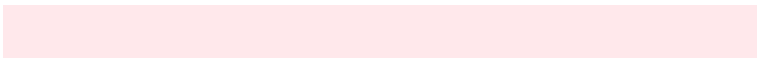
1.5317, 0.7857, 0.2515

Inverse Universe

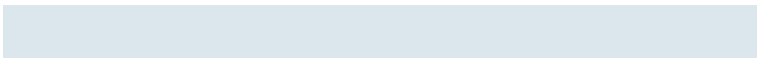
The Inverse Universe completely reimagines the original color for something new.



73.7052, 74.4682, 79.5974



85.0693, 84.9848, 90.3243



73.3146, 78.3540, 91.3815



15.1374, 15.0828, 16.0089



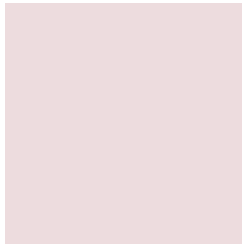
19.2056, 9.8849, 1.6179



1.5317, 0.7857, 0.2515

Previews

White Background



This preview shows how the XYZ color 73.7031, 74.4649, 79.5958 looks on a white background.

Color Contrast Check

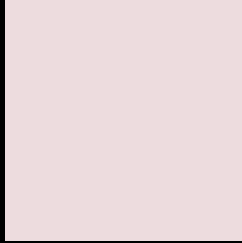
Large Text (above 18pt) WCAG AA × Fail

Any Text WCAG AA × Fail

Large Text (above 18pt) WCAG AAA × Fail

Any Text WCAG AAA × Fail

Black Background



This preview shows how the XYZ color 73.7031, 74.4649, 79.5958 looks on a black background.

Color Contrast Check

Large Text (above 18pt) WCAG AA ✓ Pass

Any Text WCAG AA ✓ Pass

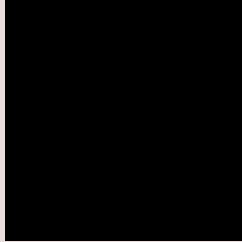
Large Text (above 18pt) WCAG AAA ✓ Pass

Any Text WCAG AAA ✓ Pass

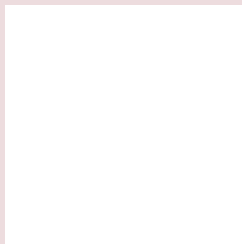
If you want to check with other color combinations, try the [Color Contrast Checker](#).

XYZ 73.7031, 74.4649, 79.5958

Background



This preview shows how black text looks on a background with the XYZ color 73.7031, 74.4649, 79.5958.



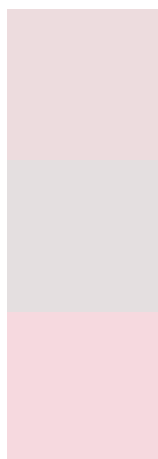
This preview shows how white text looks on a background with the XYZ color 73.7031, 74.4649,

79.5958.

Color Blindness Simulation

Color vision deficiency is a very complex topic, and I could not describe the different causes any better than Wikipedia does, so if you want to learn more, you should check out their [article about color blindness](#).

Dichromacy



Original Color

73.7031, 74.4649, 79.5958

Protanopia

71.8371, 74.6512, 81.1439

Deuteranopia

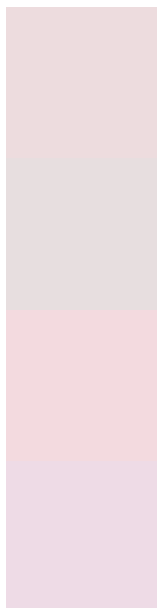
76.1382, 74.5463, 80.1880



Tritanopia

75.6634, 74.4917, 88.9877

Trichromacy



Original Color

73.7031, 74.4649, 79.5958

Protanomaly

72.3956, 74.5592, 80.3877

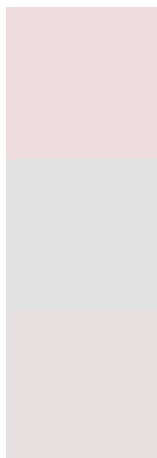
Deuteranomaly

75.3528, 74.5252, 80.2253

Tritanomaly

74.8743, 74.5533, 85.3068

Monochromacy



Original Color

73.7031, 74.4649, 79.5958

Achromatopsia

71.5672, 75.2942, 81.9954

Achromatomaly

72.1553, 74.8152, 81.1588

CSS Examples

Text

The CSS property to change the color of the text to XYZ 73.7031, 74.4649, 79.5958 is called "color". The color property can be set on classes, ids or directly on the HTML element.

This example shows how text in the color `rgb(237, 220, 222)` looks like.

```
.text, #text, p{  
    color:rgb(237, 220, 222)  
}
```

If you want to add a text shadow in that color use the text-shadow property, you can generate a text shadow directly with our [CSS Text Shadow Generator](#).

Here you see how black text with a 4 pixel rgb(237, 220, 222) colored shadow looks like.

```
.shadow{ text-shadow: 4px 4px 2px rgb(237, 220, 222) }
```

Border

The CSS property to change the border of an element to XYZ 73.7031, 74.4649, 79.5958 is called "border". The border property can be set on classes, ids or directly on the HTML element.

This example shows the color as border, it can be applied via the CSS property "border" or "border-color".

```
.border, #border, table{ border:4px solid rgb(237, 220, 222) }
```


If only the border color should be changed use the property `border-color`.

```
.border{ border-color:rgb(237, 220, 222) }
```

If you want to add a box shadow in that color use:

Here you see how a box with a 4 pixel `rgb(237, 220, 222)` colored shadow looks like.

```
.boxshadow{ -moz-box-shadow:4px 4px 4px  
4px rgb(237, 220, 222); -webkit-box-  
shadow:4px 4px 4px 4px rgb(237, 220, 222);  
box-shadow:4px 4px 4px 4px rgb(237, 220,  
222) }
```

Background

The CSS property to change the background color of an element to XYZ 73.7031, 74.4649, 79.5958 is called "background". The background property can be set on classes, ids or directly on the HTML element.

```
.background, #background, body{  
background: rgb(237, 220, 222) }
```

If only the background color should be changed can be used:

```
.background{ background-color: rgb(237,  
220, 222) }
```

This example shows the color as background, it is applied via the CSS property "background".

To optimize and compress your CSS code, you can use our [online CSS compressor and optimizer](#) based on csstidy. If you want to create a linear or radial gradient as background or border, check our [CSS Gradient Generator](#).

Hey! You found this booklet interesting? Support Converting Colors with the new Membership Option!

The pro membership hides all ads, plus gives you double the colors in the color bucket, and more awesome pro features!

[Learn more, Memberships starting at \\$2.50/m!](#)

**Follow me
on Twitter!**

@ConvertingColor