

Converting Colors

XYZ(73.6392, 73.6841, 81.3442)

Have a look what the booklet for
XYZ(73.6392, 73.6841, 81.3442)
contains.

XYZ(73.5871, 73.5836, 81.5588)	3
<i>Conversions</i>	4
<i>Details</i>	6
<i>Harmonies</i>	12
<i>Previews</i>	24
<i>Color Blindness Simulation</i>	28
<i>CSS Examples</i>	31

Color

**XYZ(73.5871, 73.5836,
81.5588)**

Conversions

Conversions Part 1

Format	Color
Hex	EDDAE1
RGB	237, 218, 225
RGB Percent	93%, 85%, 88%
CMY	0.0706, 0.1451, 0.1176
CMYK	0.00, 0.08, 0.05, 0.07
HSL	338°, 35%, 89%
HSV	338°, 8%, 93%
XYZ	73.5871, 73.5836, 81.5588
YIQ	224.4790, 9.0770, 6.2050

Conversions

Conversions Part 2

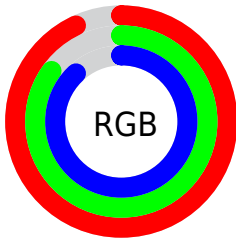
Format	Color
R _Y B	237, 218, 225
Decimal	15588065
CIE Lab	88.73, 7.72, -1.07
CIE LCh	89, 7.790, 352.073
Yxy	73.5836, 0.3217, 0.3217
Android (android.graphics.Color)	4293778145 (0xFFEDDAE1)
YUV	224.4790, 0.2569, 10.9809
Hunter-Lab	85.7809, 3.0096, 3.6748

Details

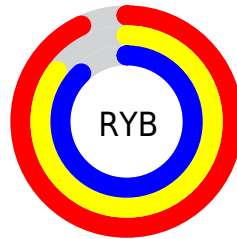
The XYZ color **73.5871, 73.5836, 81.5588** is a light color, and the websafe version is hex **CCCCCC**. A complement of this color would be **73.4834, 81.1889, 86.6650**, and the grayscale version is **71.1897, 74.8971, 81.5629**.

A 20% lighter version of the original color is **95.0500, 100.0000, 108.9000**, and **39.4089, 38.9204, 43.4655** is the 20% darker color. If you saturate the color by 10%, you get **65.9219, 61.3791, 69.3652**, and if you desaturate by 10%, it is **82.3143, 87.6237, 94.9918**.

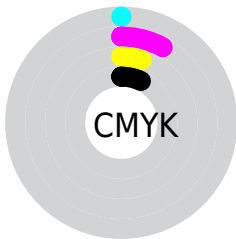
Distribution



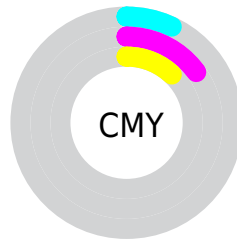
- Red (93%)
- Green (85%)
- Blue (88%)



- Red (93%)
- Yellow (85%)
- Blue (88%)



- Cyan (0%)
- Magenta (8%)
- Yellow (5%)
- Black (7%)



- Cyan (7%)
- Magenta (15%)
- Yellow (12%)

Brightness & Saturation Gradients

These gradients show how the XYZ color 73.5871, 73.5836, 81.5588 changes by changing the brightness by 10 percent. The first figure shows a shift by +10% for each color and the second figure -10%.

Similar to the brightness gradients but the following saturation gradients show a change of the XYZ color 73.5871, 73.5836, 81.5588 by changing the saturation by 10% instead.

73.5871, 73.5836,
81.5588

73.5871, 73.5836,
81.5588

462.1194,
473.0350, 520.0153

54.7462, 54.4533,
60.4682

123.3090,
124.3054, 137.3862

39.4316, 38.9642,
43.3684

154.9207,
156.6656, 172.9602

27.2779, 26.7319,
29.8407

191.5201,
194.2046, 214.1990

17.9197, 17.3719,
19.4667

233.4725,
237.3068, 261.5213

10.9917, 10.5000,
11.8278

281.1433,
286.3565, 315.3455

6.1285, 5.7317,
6.5054

334.8978,

2.9648, 2.6827,

341.7382, 376.0902

3.0810

395.1014,
403.8362, 444.1740

■ 1.1352, 0.9684,
1.1362

■ 0.0542, 0.0000,
0.0000

■ 73.5871, 73.5836,
81.5588

■ 73.5871, 73.5836,
81.5588

■ 65.9219, 61.3791,
69.3652

■ 82.3143, 87.6237,
94.9918

■ 59.2709, 50.9245,
58.3698

■ 88.7266, 96.7412,
108.5577

■ 53.5915, 42.1416,
48.5359

■ 88.7355, 96.7448,
108.6045

■ 48.8359, 34.9424,
39.8229

■ 44.9519, 29.2311,
32.1877

■ 41.8818, 24.9009,
25.5841

■ 39.5605, 21.8310,
19.9618

■ 37.9120, 19.8792,
15.2652

■ 36.8330, 18.8495,
11.4273

Harmonies

Analogous

The Analogous color harmony consists of three colors that are next to each other on the color wheel.



72.8343, 73.5836, 86.6648



73.5871, 73.5836, 81.5588



73.3486, 73.5836, 76.2858

Triad

The Triadic color harmony groups three colors that are evenly spaced from another and form a triangle on the color wheel.



73.5871, 73.5836, 81.5588



68.5871, 73.5836, 70.8888



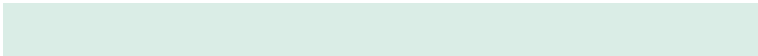
67.7368, 73.5836, 88.5817

Complementary

The Complementary color scheme is a pair of colors which are on the opposite of each other on the color wheel.



73.5871, 73.5836, 81.5588



73.4834, 81.1889, 86.6650

Split Complementary

Split-complementary colors differ from the complementary color scheme. The scheme consists of three colors, the original color and two neighbors of the complement color.



66.6367, 73.5836, 84.0806



73.5871, 73.5836, 81.5588



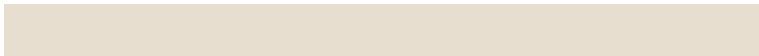
67.1215, 73.5836, 73.9133

Square

The Square scheme is like the rectangle color scheme, but the four colors are evenly spaced on the color wheel.



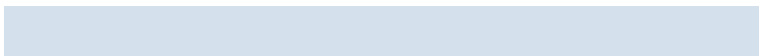
73.5871, 73.5836, 81.5588



70.4396, 73.5836, 70.2814



66.4135, 73.5836, 78.6983



69.4408, 73.5836, 90.8365

Rectangle

The Rectangle color scheme consists of four colors that form a rectangle on the color wheel.



73.5871, 73.5836, 81.5588



72.6615, 73.5836, 73.3701



66.4135, 73.5836, 78.6983



67.2854, 73.5836, 87.2718

Sweetspot

The Sweet Spot groups the original color and five complimentary colors.



73.5892, 73.5868, 81.5604



92.9301, 96.5833, 105.6558



72.9023, 73.0369, 90.3770



19.9131, 20.7086, 22.6488



0.0000, 0.0000, 0.0000



20.3446, 21.4041, 23.3091

Same Dimension

The Same Dimension uses a secret algorithm to generate beautiful new colors.



73.5892, 73.5868, 81.5604



84.9618, 83.8013, 93.2745



73.2326, 74.3699, 76.8286



15.2948, 15.1458, 16.8378



20.0713, 10.2312, 6.1768



1.6211, 0.8214, 0.7220

Inverse Universe

The Inverse Universe completely reimagines the original color for something new.



73.5892, 73.5868, 81.5604



84.9618, 83.8013, 93.2745



73.8483, 80.3145, 91.7318



15.2948, 15.1458, 16.8378



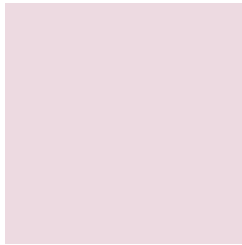
20.0713, 10.2312, 6.1768



1.6211, 0.8214, 0.7220

Previews

White Background



This preview shows how the XYZ color 73.5871, 73.5836, 81.5588 looks on a white background.

Color Contrast Check

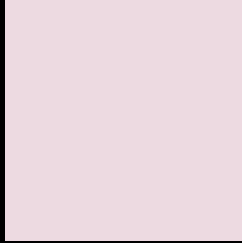
Large Text (above 18pt) WCAG AA × Fail

Any Text WCAG AA × Fail

Large Text (above 18pt) WCAG AAA × Fail

Any Text WCAG AAA × Fail

Black Background



This preview shows how the XYZ color 73.5871, 73.5836, 81.5588 looks on a black background.

Color Contrast Check

Large Text (above 18pt) WCAG AA ✓ Pass

Any Text WCAG AA ✓ Pass

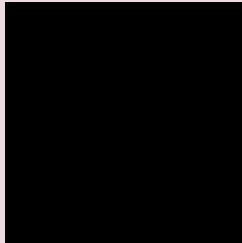
Large Text (above 18pt) WCAG AAA ✓ Pass

Any Text WCAG AAA ✓ Pass

If you want to check with other color combinations, try the [Color Contrast Checker](#).

XYZ 73.5871, 73.5836, 81.5588

Background



This preview shows how black text looks on a background with the XYZ color 73.5871, 73.5836, 81.5588.



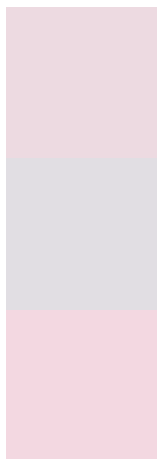
This preview shows how white text looks on a background with the XYZ color 73.5871, 73.5836,

81.5588.

Color Blindness Simulation

Color vision deficiency is a very complex topic, and I could not describe the different causes any better than Wikipedia does, so if you want to learn more, you should check out their [article about color blindness](#).

Dichromacy



Original Color

73.5871, 73.5836, 81.5588

Protanopia

71.0377, 73.7962, 83.1730

Deuteranopia

75.1086, 73.6027, 81.4822



Tritanopia

74.9240, 73.7434, 88.1269

Trichromacy



Original Color

73.5871, 73.5836, 81.5588

Protanomaly

71.8970, 73.8619, 82.4189

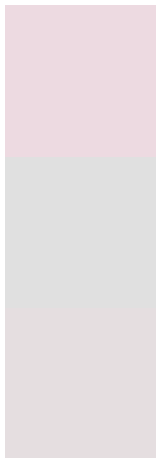
Deuteranomaly

74.6791, 73.7627, 81.5358

Tritanomaly

74.4966, 73.5724, 85.8758

Monochromacy



Original Color

73.5871, 73.5836, 81.5588

Achromatopsia

70.8507, 74.5404, 81.1745

Achromatomaly

71.8889, 74.2824, 81.0700

CSS Examples

Text

The CSS property to change the color of the text to XYZ 73.5871, 73.5836, 81.5588 is called "color". The color property can be set on classes, ids or directly on the HTML element.

This example shows how text in the color rgb(237, 218, 225) looks like.

```
.text, #text, p{  
    color:rgb(237, 218, 225)  
}
```

If you want to add a text shadow in that color use the text-shadow property, you can generate a text shadow directly with our [CSS Text Shadow Generator](#).

Here you see how black text with a 4 pixel rgb(237, 218, 225) colored shadow looks like.

```
.shadow{ text-shadow: 4px 4px 2px rgb(237, 218, 225) }
```

Border

The CSS property to change the border of an element to XYZ 73.5871, 73.5836, 81.5588 is called "border". The border property can be set on classes, ids or directly on the HTML element.

This example shows the color as border, it can be applied via the CSS property "border" or "border-color".

```
.border, #border, table{ border:4px solid rgb(237, 218, 225) }
```


If only the border color should be changed use the property `border-color`.

```
.border{ border-color:rgb(237, 218, 225) }
```

If you want to add a box shadow in that color use:

Here you see how a box with a 4 pixel `rgb(237, 218, 225)` colored shadow looks like.

```
.boxshadow{ -moz-box-shadow:4px 4px 4px  
4px rgb(237, 218, 225); -webkit-box-  
shadow:4px 4px 4px 4px rgb(237, 218, 225);  
box-shadow:4px 4px 4px 4px rgb(237, 218,  
225) }
```

Background

The CSS property to change the background color of an element to XYZ 73.5871, 73.5836, 81.5588 is called "background". The background property can be set on classes, ids or directly on the HTML element.

```
.background, #background, body{  
background: rgb(237, 218, 225) }
```

If only the background color should be changed can be used:

```
.background{ background-color: rgb(237,  
218, 225) }
```

This example shows the color as background, it is applied via the CSS property "background".

To optimize and compress your CSS code, you can use our [online CSS compressor and optimizer](#) based on csstidy. If you want to create a linear or radial gradient as background or border, check our [CSS Gradient Generator](#).

Hey! You found this booklet interesting? Support Converting Colors with the new Membership Option!

The pro membership hides all ads, plus gives you double the colors in the color bucket, and more awesome pro features!

[Learn more, Memberships starting at \\$2.50/m!](#)

**Follow me
on Twitter!**

@ConvertingColor