

Converting Colors

XYZ(73.8077, 62.8584, 85.3474)

Have a look what the booklet for
XYZ(73.8077, 62.8584, 85.3474)
contains.

XYZ(73.7183, 62.6838, 85.3046)	3
<i>Conversions</i>	4
<i>Details</i>	6
<i>Harmonies</i>	12
<i>Previews</i>	24
<i>Color Blindness Simulation</i>	28
<i>CSS Examples</i>	31

Color

**XYZ(73.7183, 62.6838,
85.3046)**

Conversions

Conversions Part 1

Format	Color
Hex	FFBBE9
RGB	255, 187, 233
RGB Percent	100%, 73%, 91%
CMY	0.0000, 0.2666, 0.0863
CMYK	0.00, 0.27, 0.09, 0.00
HSL	319°, 100%, 87%
HSV	319°, 27%, 100%
XYZ	73.7183, 62.6838, 85.3046
YIQ	212.5760, 25.7620, 28.7220

Conversions

Conversions Part 2

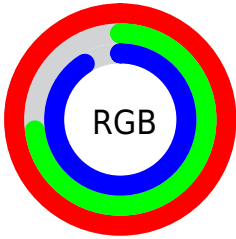
Format	Color
R _Y B	255, 187, 233
Decimal	16759785
CIE Lab	83.28, 31.48, -13.21
CIE LCh	83, 34.137, 337.235
Yxy	62.6838, 0.3325, 0.2827
Android (android.graphics.Color)	4294949865 (0xFFFFBBE9)
YUV	212.5760, 10.0690, 37.2058
Hunter-Lab	79.1731, 27.6489, -8.4605

Details

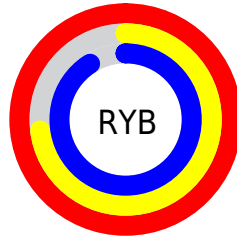
The XYZ color **73.7183, 62.6838, 85.3046** is a light color, and the websafe version is hex **FFCCFF**. A complement of this color would be **67.7641, 86.6892, 73.4858**, and the grayscale version is **62.8870, 66.1620, 72.0504**.

A 20% lighter version of the original color is **91.6407, 93.1814, 107.7636**, and **39.3493, 31.8197, 45.6629** is the 20% darker color. If you saturate the color by 10%, you get **67.6301, 52.3495, 77.5961**, and if you desaturate by 10%, it is **80.8249, 74.9662, 93.6261**.

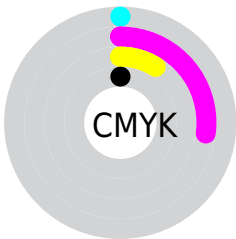
Distribution



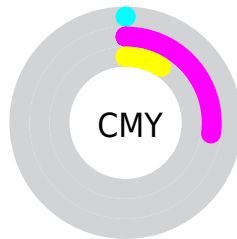
- Red (100%)
- Green (73%)
- Blue (91%)



- Red (100%)
- Yellow (73%)
- Blue (91%)



- Cyan (0%)
- Magenta (27%)
- Yellow (9%)
- Black (0%)



- Cyan (0%)
- Magenta (27%)
- Yellow (9%)

Brightness & Saturation Gradients

These gradients show how the XYZ color 73.7183, 62.6838, 85.3046 changes by changing the brightness by 10 percent. The first figure shows a shift by +10% for each color and the second figure -10%.

Similar to the brightness gradients but the following saturation gradients show a change of the XYZ color 73.7183, 62.6838, 85.3046 by changing the saturation by 10% instead.

73.7183, 62.6838,
85.3046

73.7183, 62.6838,
85.3046

462.5659,
434.4210, 532.8063

54.8540, 45.5855,
63.5415

123.4940,
108.7132, 142.6766

39.5182, 31.9188,
45.8356

155.1362,
138.4131, 179.1226

27.3456, 21.2995,
31.7684

191.7683,
173.0822, 221.3000

17.9709, 13.3431,
20.9213

233.7557,
213.1050, 269.6272

11.0287, 7.6652,
12.8758

281.4638,
258.8659, 324.5230

6.1535, 3.8815,
7.2134

335.2580,

2.9802, 1.6075,

310.7493, 386.4057

3.5154

395.5036,
369.1395, 455.6939

■ 1.1433, 0.3626,
1.3635

■ 0.0609, 0.0000,
0.1130

■ 73.7183, 62.6838,
85.3046

■ 73.7183, 62.6838,
85.3046

■ 67.6301, 52.3495,
77.5961

■ 80.8249, 74.9662,
93.6261

■ 62.5045, 43.8538,
70.4759

■ 88.9935, 89.2834,
102.5763

■ 58.2867, 37.0877,
63.9227

95.0500, 100.0000,
108.9000

■ 54.9143, 31.9280,
57.9121

■ 52.3168, 28.2349,
52.4164

■ 50.4115, 25.8441,
47.4043

■ 49.0947, 24.5496,
42.8369

■ 48.7343, 24.2577,
41.3942

Harmonies

Analogous

The Analogous color harmony consists of three colors that are next to each other on the color wheel.



68.6303, 62.6838, 106.2004



73.7183, 62.6838, 85.3046



74.8736, 62.6838, 63.2370

Triad

The Triadic color harmony groups three colors that are evenly spaced from another and form a triangle on the color wheel.



73.7183, 62.6838, 85.3046



57.8012, 62.6838, 35.2271



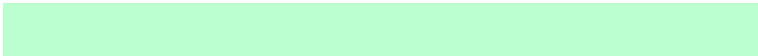
48.9324, 62.6838, 96.0639

Complementary

The Complementary color scheme is a pair of colors which are on the opposite of each other on the color wheel.



73.7183, 62.6838, 85.3046



67.7641, 86.6892, 73.4858

Split Complementary

Split-complementary colors differ from the complementary color scheme. The scheme consists of three colors, the original color and two neighbors of the complement color.



46.5235, 62.6838, 73.5254



73.7183, 62.6838, 85.3046



51.3609, 62.6838, 40.6287

Square

The Square scheme is like the rectangle color scheme, but the four colors are evenly spaced on the color wheel.



73.7183, 62.6838, 85.3046



65.2687, 62.6838, 37.0968



47.3743, 62.6838, 53.6384



54.2301, 62.6838, 113.2573

Rectangle

The Rectangle color scheme consists of four colors that form a rectangle on the color wheel.



73.7183, 62.6838, 85.3046



73.1779, 62.6838, 51.2171



47.3743, 62.6838, 53.6384



47.7789, 62.6838, 88.6985

Sweetspot

The Sweet Spot groups the original color and five complimentary colors.



73.7197, 62.6864, 85.3059



87.8393, 87.2500, 101.3438



61.9853, 56.2510, 102.1983



18.5280, 18.1945, 21.3975



0.0000, 0.0000, 0.0000



20.3446, 21.4041, 23.3091

Same Dimension

The Same Dimension uses a secret algorithm to generate beautiful new colors.



73.7197, 62.6864, 85.3059



70.3473, 56.9356, 81.1176



69.3752, 60.9486, 62.4280



18.5280, 18.1945, 21.3975



25.5361, 12.7037, 22.0053



2.5365, 1.2570, 2.4064

Inverse Universe

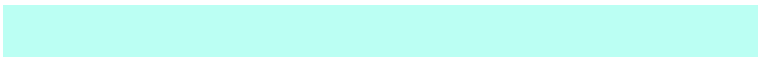
The Inverse Universe completely reimagines the original color for something new.



73.7197, 62.6864, 85.3059



70.3473, 56.9356, 81.1176



72.3624, 88.5285, 97.6996



18.5280, 18.1945, 21.3975



25.5361, 12.7037, 22.0053



2.5365, 1.2570, 2.4064

Previews

White Background



This preview shows how the XYZ color 73.7183, 62.6838, 85.3046 looks on a white background.

Color Contrast Check

Large Text (above 18pt) WCAG AA × Fail

Any Text WCAG AA × Fail

Large Text (above 18pt) WCAG AAA × Fail

Any Text WCAG AAA × Fail

Black Background



This preview shows how the XYZ color 73.7183, 62.6838, 85.3046 looks on a black background.

Color Contrast Check

Large Text (above 18pt) WCAG AA ✓ Pass

Any Text WCAG AA ✓ Pass

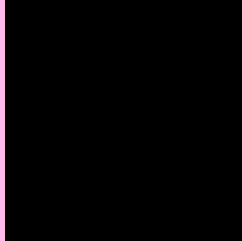
Large Text (above 18pt) WCAG AAA ✓ Pass

Any Text WCAG AAA ✓ Pass

If you want to check with other color combinations, try the [Color Contrast Checker](#).

XYZ 73.7183, 62.6838, 85.3046

Background



This preview shows how black text looks on a background with the XYZ color 73.7183, 62.6838, 85.3046.



This preview shows how white text looks on a background with the XYZ color 73.7183, 62.6838,

85.3046.

Color Blindness Simulation

Color vision deficiency is a very complex topic, and I could not describe the different causes any better than Wikipedia does, so if you want to learn more, you should check out their [article about color blindness](#).

Dichromacy



Original Color

73.7183, 62.6838, 85.3046

Protanopia

62.3722, 63.0145, 95.2619

Deuteranopia

64.3169, 62.8597, 83.6062



Tritanopia

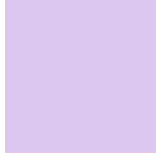
70.2570, 62.8997, 67.4694

Trichromacy



Original Color

73.7183, 62.6838, 85.3046



Protanomaly

65.8158, 62.4134, 91.7972



Deuteranomaly

67.3451, 62.6910, 84.1524



Tritanomaly

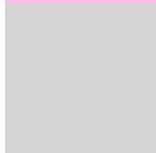
71.3161, 62.6674, 73.3030

Monochromacy



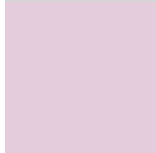
Original Color

73.7183, 62.6838, 85.3046



Achromatopsia

63.2451, 66.5387, 72.4607



Achromatomaly

66.5060, 64.8470, 76.7216

CSS Examples

Text

The CSS property to change the color of the text to XYZ 73.7183, 62.6838, 85.3046 is called "color". The color property can be set on classes, ids or directly on the HTML element.

This example shows how text in the color `rgb(255, 187, 233)` looks like.

```
.text, #text, p{  
    color:rgb(255, 187, 233)  
}
```

If you want to add a text shadow in that color use the text-shadow property, you can generate a text shadow directly with our [CSS Text Shadow Generator](#).

Here you see how black text with a 4 pixel rgb(255, 187, 233) colored shadow looks like.

```
.shadow{ text-shadow: 4px 4px 2px rgb(255, 187, 233) }
```

Border

The CSS property to change the border of an element to XYZ 73.7183, 62.6838, 85.3046 is called "border". The border property can be set on classes, ids or directly on the HTML element.

This example shows the color as border, it can be applied via the CSS property "border" or "border-color".

```
.border, #border, table{ border:4px solid rgb(255, 187, 233) }
```


If only the border color should be changed use the property `border-color`.

```
.border{ border-color:rgb(255, 187, 233) }
```

If you want to add a box shadow in that color use:

Here you see how a box with a 4 pixel `rgb(255, 187, 233)` colored shadow looks like.

```
.boxshadow{ -moz-box-shadow:4px 4px 4px  
4px rgb(255, 187, 233); -webkit-box-  
shadow:4px 4px 4px 4px rgb(255, 187, 233);  
box-shadow:4px 4px 4px 4px rgb(255, 187,  
233) }
```

Background

The CSS property to change the background color of an element to XYZ 73.7183, 62.6838, 85.3046 is called "background". The background property can be set on classes, ids or directly on the HTML element.

```
.background, #background, body{  
background: rgb(255, 187, 233) }
```

If only the background color should be changed can be used:

```
.background{ background-color: rgb(255,  
187, 233) }
```

This example shows the color as background, it is applied via the CSS property "background".

To optimize and compress your CSS code, you can use our [online CSS compressor and optimizer](#) based on csstidy. If you want to create a linear or radial gradient as background or border, check our [CSS Gradient Generator](#).

Hey! You found this booklet interesting? Support Converting Colors with the new Membership Option!

The pro membership hides all ads, plus gives you double the colors in the color bucket, and more awesome pro features!

[Learn more, Memberships starting at \\$2.50/m!](#)

**Follow me
on Twitter!**

@ConvertingColor