

Converting Colors

XYZ(73.8255, 74.1735, 73.8930)

Have a look what the booklet for
XYZ(73.8255, 74.1735, 73.8930)
contains.

XYZ(73.7447, 74.2188, 74.0572)	3
<i>Conversions</i>	4
<i>Details</i>	6
<i>Harmonies</i>	12
<i>Previews</i>	24
<i>Color Blindness Simulation</i>	28
<i>CSS Examples</i>	31

Color

**XYZ(73.7447, 74.2188,
74.0572)**

Conversions

Conversions Part 1

Format	Color
Hex	F1DBD6
RGB	241, 219, 214
RGB Percent	95%, 86%, 84%
CMY	0.0549, 0.1412, 0.1608
CMYK	0.00, 0.09, 0.11, 0.05
HSL	11°, 49%, 89%
HSV	11°, 11%, 95%
XYZ	73.7447, 74.2188, 74.0572
YIQ	225.0080, 14.7170, 3.1090

Conversions

Conversions Part 2

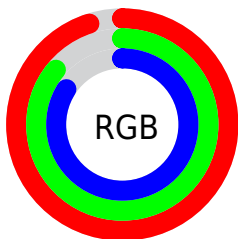
Format	Color
R _Y B	241, 220, 214
Decimal	15850454
CIE Lab	89.03, 6.75, 5.19
CIE LCh	89, 8.515, 37.577
Yxy	74.2188, 0.3322, 0.3343
Android (android.graphics.Color)	4294040534 (0xFFFF1DBD6)
YUV	225.0080, -5.4269, 14.0250
Hunter-Lab	86.1503, 2.0329, 9.3379

Details

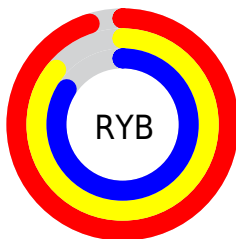
The XYZ color **73.7447, 74.2188, 74.0572** is a light color, and the websafe version is hex **CCCCCC**. A complement of this color would be **73.6038, 80.6363, 94.9049**, and the grayscale version is **71.6058, 75.3349, 82.0397**.

A 20% lighter version of the original color is **95.0500, 100.0000, 108.9000**, and **39.5411, 39.3684, 38.3157** is the 20% darker color. If you saturate the color by 10%, you get **66.0687, 63.4328, 57.4203**, and if you desaturate by 10%, it is **82.4844, 86.4018, 93.2970**.

Distribution



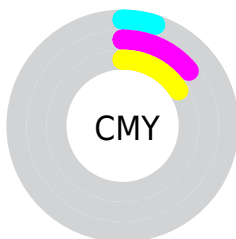
- Red (95%)
- Green (86%)
- Blue (84%)



- Red (95%)
- Yellow (86%)
- Blue (84%)



- Cyan (0%)
- Magenta (9%)
- Yellow (11%)
- Black (5%)



- Cyan (5%)
- Magenta (14%)
- Yellow (16%)

Brightness & Saturation Gradients

These gradients show how the XYZ color 73.7447, 74.2188, 74.0572 changes by changing the brightness by 10 percent. The first figure shows a shift by +10% for each color and the second figure -10%.

Similar to the brightness gradients but the following saturation gradients show a change of the XYZ color 73.7447, 74.2188, 74.0572 by changing the saturation by 10% instead.


 73.7447, 74.2188,
74.0572

 73.7447, 74.2188,
74.0572


462.6557,
475.2282, 493.8394

 54.8757, 54.9731,
54.3438


123.5313,
125.2059, 126.7117

 39.5356, 39.3802,
38.4815


155.1795,
157.7162, 160.4898

 27.3593, 27.0556,
26.0519


191.8182,
195.4167, 199.7933

 17.9812, 17.6150,
16.6364

233.8127,
238.6920, 245.0406

 11.0361, 10.6739,
9.8164

281.5283,
287.9264, 296.6504

 6.1586, 5.8480,
5.1734

335.3305,

 2.9833, 2.7529,

343.5043, 355.0411

2.2888

395.5845,
405.8101, 420.6312

■ 1.1450, 1.0041,
0.7249

■ 0.0622, 0.0000,
0.0000

■ 73.7447, 74.2188,
74.0572

■ 73.7447, 74.2188,
74.0572

■ 66.0687, 63.4328,
57.4203

■ 82.4844, 86.4018,
93.2970

■ 59.4093, 53.9841,
43.2697

■ 90.0859, 97.4409,
108.6677

■ 53.7252, 45.8233,
31.4869

■ 48.9696, 38.8941,
21.9419

■ 45.0919, 33.1359,
14.4919

■ 42.0363, 28.4830,
8.9779

■ 39.7406, 24.8631,
5.2176

■ 38.1325, 22.1945,
2.9934

■ 37.2017, 20.5525,
2.0063

Harmonies

Analogous

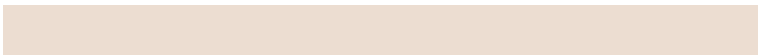
The Analogous color harmony consists of three colors that are next to each other on the color wheel.



74.5625, 74.2188, 79.3178



73.7447, 74.2188, 74.0572



72.0720, 74.2188, 70.7251

Triad

The Triadic color harmony groups three colors that are evenly spaced from another and form a triangle on the color wheel.



73.7447, 74.2188, 74.0572



66.9268, 74.2188, 76.5408



71.0689, 74.2188, 92.6469

Complementary

The Complementary color scheme is a pair of colors which are on the opposite of each other on the color wheel.



73.7447, 74.2188, 74.0572



73.6038, 80.6363, 94.9049

Split Complementary

Split-complementary colors differ from the complementary color scheme. The scheme consists of three colors, the original color and two neighbors of the complement color.



69.0353, 74.2188, 91.8143



73.7447, 74.2188, 74.0572



66.6701, 74.2188, 82.3241

Square

The Square scheme is like the rectangle color scheme, but the four colors are evenly spaced on the color wheel.



73.7447, 74.2188, 74.0572



68.1431, 74.2188, 72.1094



67.4348, 74.2188, 87.9648



72.9981, 74.2188, 90.1874

Rectangle

The Rectangle color scheme consists of four colors that form a rectangle on the color wheel.



73.7447, 74.2188, 74.0572



70.7112, 74.2188, 69.9487



67.4348, 74.2188, 87.9648



70.3746, 74.2188, 92.7448

Sweetspot

The Sweet Spot groups the original color and five complimentary colors.



73.7468, 74.2221, 74.0588



91.8866, 95.6050, 101.8898



75.4706, 72.8539, 89.4803



19.4906, 20.2173, 21.4176



0.0000, 0.0000, 0.0000



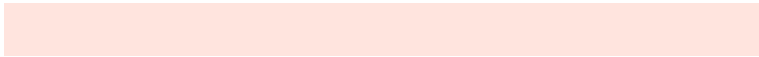
20.3446, 21.4041, 23.3091

Same Dimension

The Same Dimension uses a secret algorithm to generate beautiful new colors.



73.7468, 74.2221, 74.0588



82.1465, 82.0095, 80.5017



77.3975, 81.5236, 75.2757



16.0098, 16.2327, 16.4391



20.2443, 11.2867, 1.1116



1.7494, 1.0694, 0.1142

Inverse Universe

The Inverse Universe completely reimagines the original color for something new.



73.6038, 80.6363, 94.9049



81.9594, 90.3882, 107.7347



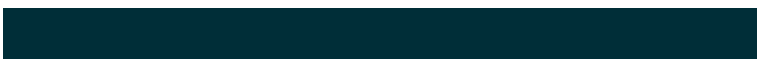
69.8773, 73.1832, 93.6627



15.9838, 17.4017, 20.2380



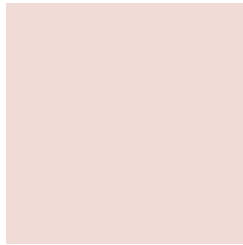
19.4478, 25.1199, 48.9515



1.6817, 2.2173, 4.0936

Previews

White Background



This preview shows how the XYZ color 73.7447, 74.2188, 74.0572 looks on a white background.

Color Contrast Check

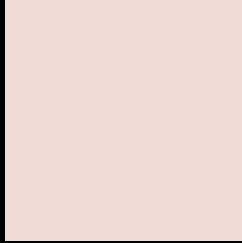
Large Text (above 18pt) WCAG AA × Fail

Any Text WCAG AA × Fail

Large Text (above 18pt) WCAG AAA × Fail

Any Text WCAG AAA × Fail

Black Background



This preview shows how the XYZ color 73.7447, 74.2188, 74.0572 looks on a black background.

Color Contrast Check

Large Text (above 18pt) WCAG AA ✓ Pass

Any Text WCAG AA ✓ Pass

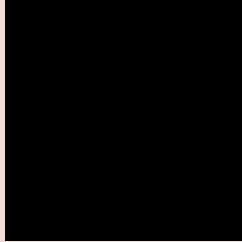
Large Text (above 18pt) WCAG AAA ✓ Pass

Any Text WCAG AAA ✓ Pass

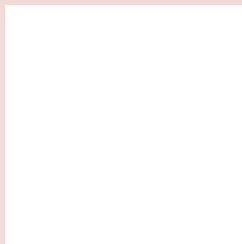
If you want to check with other color combinations, try the [Color Contrast Checker](#).

XYZ 73.7447, 74.2188, 74.0572

Background



This preview shows how black text looks on a background with the XYZ color 73.7447, 74.2188, 74.0572.



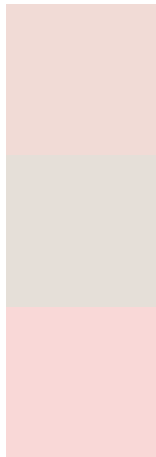
This preview shows how white text looks on a background with the XYZ color 73.7447, 74.2188,

74.0572.

Color Blindness Simulation

Color vision deficiency is a very complex topic, and I could not describe the different causes any better than Wikipedia does, so if you want to learn more, you should check out their [article about color blindness](#).

Dichromacy



Original Color

73.7447, 74.2188, 74.0572

Protanopia

71.0954, 74.3912, 75.5776

Deuteranopia

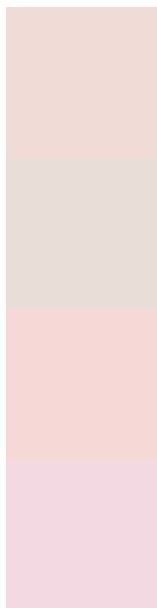
75.8885, 74.1578, 74.6041



Tritanopia

76.5721, 74.2280, 87.3825

Trichromacy



Original Color

73.7447, 74.2188, 74.0572

Protanomaly

71.9913, 74.4725, 74.8703

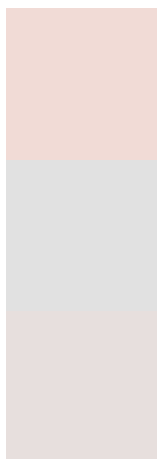
Deuteranomaly

75.0846, 74.1248, 74.6401

Tritanomaly

75.5025, 74.1714, 82.2886

Monochromacy



Original Color

73.7447, 74.2188, 74.0572

Achromatopsia

71.5672, 75.2942, 81.9954

Achromatomaly

72.3938, 74.9847, 79.0646

CSS Examples

Text

The CSS property to change the color of the text to XYZ 73.7447, 74.2188, 74.0572 is called "color". The color property can be set on classes, ids or directly on the HTML element.

This example shows how text in the color `rgb(241, 219, 214)` looks like.

```
.text, #text, p{  
    color:rgb(241, 219, 214)  
}
```

If you want to add a text shadow in that color use the text-shadow property, you can generate a text shadow directly with our [CSS Text Shadow Generator](#).

Here you see how black text with a 4 pixel rgb(241, 219, 214) colored shadow looks like.

```
.shadow{ text-shadow: 4px 4px 2px rgb(241, 219, 214) }
```

Border

The CSS property to change the border of an element to XYZ 73.7447, 74.2188, 74.0572 is called "border". The border property can be set on classes, ids or directly on the HTML element.

This example shows the color as border, it can be applied via the CSS property "border" or "border-color".

```
.border, #border, table{ border:4px solid rgb(241, 219, 214) }
```


If only the border color should be changed use the property `border-color`.

```
.border{ border-color:rgb(241, 219, 214) }
```

If you want to add a box shadow in that color use:

Here you see how a box with a 4 pixel `rgb(241, 219, 214)` colored shadow looks like.

```
.boxshadow{ -moz-box-shadow:4px 4px 4px  
4px rgb(241, 219, 214); -webkit-box-  
shadow:4px 4px 4px 4px rgb(241, 219, 214);  
box-shadow:4px 4px 4px 4px rgb(241, 219,  
214) }
```

Background

The CSS property to change the background color of an element to XYZ 73.7447, 74.2188, 74.0572 is called "background". The background property can be set on classes, ids or directly on the HTML element.

```
.background, #background, body{  
background: rgb(241, 219, 214) }
```

If only the background color should be changed can be used:

```
.background{ background-color: rgb(241,  
219, 214) }
```

This example shows the color as background, it is applied via the CSS property "background".

To optimize and compress your CSS code, you can use our [online CSS compressor and optimizer](#) based on csstidy. If you want to create a linear or radial gradient as background or border, check our [CSS Gradient Generator](#).

Hey! You found this booklet interesting? Support Converting Colors with the new Membership Option!

The pro membership hides all ads, plus gives you double the colors in the color bucket, and more awesome pro features!

[Learn more, Memberships starting at \\$2.50/m!](#)

**Follow me
on Twitter!**

@ConvertingColor