

# Converting Colors

XYZ(73.8697, 66.2788, 88.6198)

Have a look what the booklet for  
XYZ(73.8697, 66.2788, 88.6198)  
contains.

<b>XYZ(73.6922, 66.2185, 88.2543)</b> .....	3
<b><i>Conversions</i></b> .....	4
<b><i>Details</i></b> .....	6
<b><i>Harmonies</i></b> .....	12
<b><i>Previews</i></b> .....	24
<b><i>Color Blindness Simulation</i></b> .....	28
<b><i>CSS Examples</i></b> .....	31

# Color

**XYZ(73.6922, 66.2185,  
88.2543)**

# Conversions

## Conversions Part 1

Format	Color
Hex	F7C6EC
RGB	247, 198, 236
RGB Percent	97%, 78%, 93%
CMY	0.0314, 0.2235, 0.0745
CMYK	0.00, 0.20, 0.04, 0.03
HSL	313°, 75%, 87%
HSV	313°, 20%, 97%
XYZ	73.6922, 66.2185, 88.2543
YIQ	216.9830, 17.0060, 22.2060

# Conversions

## Conversions Part 2

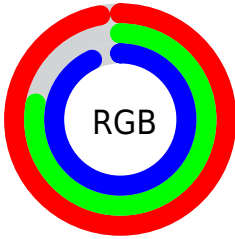
<b>Format</b>	<b>Color</b>
R <sub>Y</sub> B	247, 198, 236
Decimal	16238316
CIE Lab	85.11, 23.53, -12.15
CIE LCh	85, 26.480, 332.684
Yxy	66.2185, 0.3230, 0.2902
Android (android.graphics.Color)	4294428396 (0xFFF7C6EC)
YUV	216.9830, 9.3754, 26.3249
Hunter-Lab	81.3748, 19.2421, -7.3401

# Details

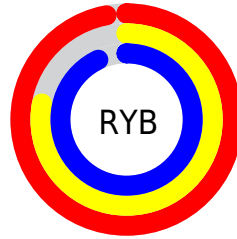
The XYZ color **73.6922, 66.2185, 88.2543** is a light color, and the websafe version is hex **FFCCFF**. A complement of this color would be **68.0608, 83.1327, 72.7845**, and the grayscale version is **65.8730, 69.3036, 75.4716**.

A 20% lighter version of the original color is **95.0500, 100.0000, 108.9000**, and **39.4467, 34.1890, 47.7001** is the 20% darker color. If you saturate the color by 10%, you get **67.7075, 55.5177, 82.3463**, and if you desaturate by 10%, it is **80.6264, 78.7763, 94.6038**.

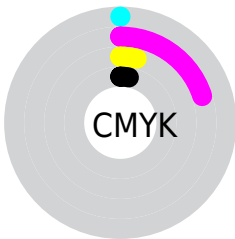
# Distribution



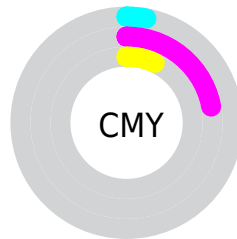
- Red (97%)
- Green (78%)
- Blue (93%)



- Red (97%)
- Yellow (78%)
- Blue (93%)



- Cyan (0%)
- Magenta (20%)
- Yellow (4%)
- Black (3%)



- Cyan (3%)
- Magenta (22%)
- Yellow (7%)

# Brightness & Saturation Gradients

These gradients show how the XYZ color 73.6922, 66.2185, 88.2543 changes by changing the brightness by 10 percent. The first figure shows a shift by +10% for each color and the second figure -10%.

Similar to the brightness gradients but the following saturation gradients show a change of the XYZ color 73.6922, 66.2185, 88.2543 by changing the saturation by 10% instead.



73.6922, 66.2185,  
88.2543

73.6922, 66.2185,  
88.2543

462.4771,  
447.1579, 542.7585

54.8325, 48.4498,  
65.9682

123.4572,  
113.7999, 146.8254

39.5010, 34.1832,  
47.7902

155.0933,  
144.3814, 183.9474

27.3322, 23.0344,  
33.3020

191.7189,  
180.0025, 226.8518

17.9607, 14.6189,  
22.0849

233.6994,  
221.0478, 275.9572

11.0213, 8.5524,  
13.7204

281.4001,  
267.9016, 331.6820

6.1486, 4.4504,  
7.7899

335.1864,

2.9771, 1.9286,

320.9483, 394.4448

3.8750

395.4236,  
380.5723, 464.6641

■ 1.1417, 0.5655,  
1.5570

■ 0.0596, 0.0000,  
0.2599

■ 73.6922, 66.2185,  
88.2543

■ 73.6922, 66.2185,  
88.2543

■ 67.7075, 55.5177,  
82.3463

■ 80.6264, 78.7763,  
94.6038

■ 62.6217, 46.5760,  
76.8595

■ 88.5461, 93.2657,  
101.4055

■ 58.3883, 39.2997,  
71.7780

■ 91.7902, 98.3632,  
106.7744

■ 54.9541, 33.5828,  
67.0830

■ 92.1683, 98.5144,  
108.7651

■ 52.2598, 29.3072,  
62.7536

■ 50.2377, 26.3378,  
58.7661

■ 48.8071, 24.5138,  
55.0923

■ 47.8369, 23.5729,  
51.6873

■ 47.8225, 23.5601,  
51.6330

# Harmonies

## Analogous

The Analogous color harmony consists of three colors that are next to each other on the color wheel.



69.3394, 66.2185, 103.4415



73.6922, 66.2185, 88.2543



75.1084, 66.2185, 70.5732

# Triad

The Triadic color harmony groups three colors that are evenly spaced from another and form a triangle on the color wheel.



73.6922, 66.2185, 88.2543



62.4031, 66.2185, 44.0081



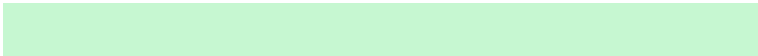
53.7680, 66.2185, 91.3386

# Complementary

The Complementary color scheme is a pair of colors which are on the opposite of each other on the color wheel.



73.6922, 66.2185, 88.2543



68.0608, 83.1327, 72.7845

# Split Complementary

Split-complementary colors differ from the complementary color scheme. The scheme consists of three colors, the original color and two neighbors of the complement color.



52.1601, 66.2185, 73.6501



73.6922, 66.2185, 88.2543



56.9445, 66.2185, 47.8312

# Square

The Square scheme is like the rectangle color scheme, but the four colors are evenly spaced on the color wheel.



73.6922, 66.2185, 88.2543



68.3517, 66.2185, 46.6705



53.2858, 66.2185, 58.0492



57.8193, 66.2185, 105.4108



# Rectangle

The Rectangle color scheme consists of four colors that form a rectangle on the color wheel.



73.6922, 66.2185, 88.2543



74.1284, 66.2185, 60.1574



53.2858, 66.2185, 58.0492



52.9358, 66.2185, 85.5285

# Sweetspot

The Sweet Spot groups the original color and five complimentary colors.



73.6942, 66.2214, 88.2557



89.8136, 90.4044, 104.4505



63.1716, 60.6065, 96.3655



19.1069, 19.1366, 22.2553



0.0000, 0.0000, 0.0000



20.3446, 21.4041, 23.3091



# Same Dimension

The Same Dimension uses a secret algorithm to generate beautiful new colors.



73.6942, 66.2214, 88.2557



76.4033, 66.1210, 92.1584



70.4232, 64.9130, 71.0310



17.0451, 16.7009, 19.9840



25.3475, 12.4824, 27.6022



2.2660, 1.1123, 2.6269



# Inverse Universe

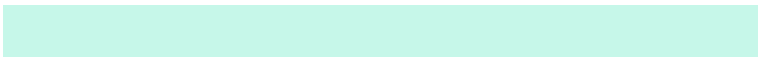
The Inverse Universe completely reimagines the original color for something new.



73.6942, 66.2214, 88.2557



76.4033, 66.1210, 92.1584



71.2764, 84.4189, 89.7180



17.0451, 16.7009, 19.9840



25.3475, 12.4824, 27.6022



2.2660, 1.1123, 2.6269



# Previews

## White Background



This preview shows how the XYZ color 73.6922, 66.2185, 88.2543 looks on a white background.

## Color Contrast Check

Large Text (above 18pt) WCAG AA × Fail

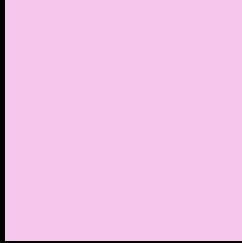
Any Text WCAG AA × Fail

Large Text (above 18pt) WCAG AAA × Fail

Any Text WCAG AAA × Fail



# Black Background



This preview shows how the XYZ color 73.6922, 66.2185, 88.2543 looks on a black background.

## Color Contrast Check

Large Text (above 18pt) WCAG AA ✓ Pass

Any Text WCAG AA ✓ Pass

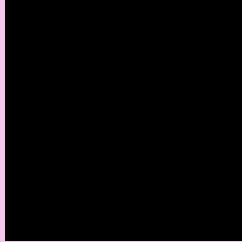
Large Text (above 18pt) WCAG AAA ✓ Pass

Any Text WCAG AAA ✓ Pass

If you want to check with other color combinations, try the [Color Contrast Checker](#).

**XYZ 73.6922, 66.2185, 88.2543**

## **Background**



This preview shows how black text looks on a background with the XYZ color 73.6922, 66.2185, 88.2543.



This preview shows how white text looks on a background with the XYZ color 73.6922, 66.2185,



# Color Blindness Simulation

Color vision deficiency is a very complex topic, and I could not describe the different causes any better than Wikipedia does, so if you want to learn more, you should check out their [article about color blindness](#).

## Dichromacy



### Original Color

73.6922, 66.2185, 88.2543

### Protanopia

65.3555, 66.3856, 94.9570

### Deuteranopia

67.9046, 66.4135, 87.0820



## Tritanopia

70.7193, 66.0161, 74.6607

# Trichromacy



## Original Color

73.6922, 66.2185, 88.2543



## Protanomaly

68.0727, 66.0231, 92.3750



## Deuteranomaly

69.8670, 66.3397, 87.7197



## Tritanomaly

71.7650, 66.1028, 79.4977

# Monochromacy



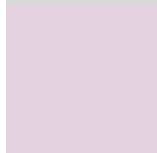
## Original Color

73.6922, 66.2185, 88.2543



## Achromatopsia

65.9525, 69.3872, 75.5626



## Achromatomaly

68.4960, 67.9690, 80.0302

# CSS Examples

## Text

The CSS property to change the color of the text to XYZ 73.6922, 66.2185, 88.2543 is called "color". The color property can be set on classes, ids or directly on the HTML element.

This example shows how text in the color `rgb(247, 198, 236)` looks like.

```
.text, #text, p{  
    color:rgb(247, 198, 236)  
}
```

If you want to add a text shadow in that color use the text-shadow property, you can generate a text shadow directly with our [CSS Text Shadow Generator](#).

Here you see how black text with a 4 pixel rgb(247, 198, 236) colored shadow looks like.

```
.shadow{ text-shadow: 4px 4px 2px rgb(247, 198, 236) }
```

## Border

The CSS property to change the border of an element to XYZ 73.6922, 66.2185, 88.2543 is called "border". The border property can be set on classes, ids or directly on the HTML element.

This example shows the color as border, it can be applied via the CSS property "border" or "border-color".

```
.border, #border, table{ border:4px solid rgb(247, 198, 236) }
```



If only the border color should be changed use the property `border-color`.

```
.border{ border-color:rgb(247, 198, 236) }
```

If you want to add a box shadow in that color use:

Here you see how a box with a 4 pixel `rgb(247, 198, 236)` colored shadow looks like.

```
.boxshadow{ -moz-box-shadow:4px 4px 4px  
4px rgb(247, 198, 236); -webkit-box-  
shadow:4px 4px 4px 4px rgb(247, 198, 236);  
box-shadow:4px 4px 4px 4px rgb(247, 198,  
236) }
```

# Background

The CSS property to change the background color of an element to XYZ 73.6922, 66.2185, 88.2543 is called "background". The background property can be set on classes, ids or directly on the HTML element.

```
.background, #background, body{  
background: rgb(247, 198, 236) }
```

If only the background color should be changed can be used:

```
.background{ background-color: rgb(247,  
198, 236) }
```

This example shows the color as background, it is applied via the CSS property "background".

To optimize and compress your CSS code, you can use our [online CSS compressor and optimizer](#) based on csstidy. If you want to create a linear or radial gradient as background or border, check our [CSS Gradient Generator](#).

Hey! You found this booklet interesting? Support Converting Colors with the new Membership Option!

The pro membership hides all ads, plus gives you double the colors in the color bucket, and more awesome pro features!

**[Learn more, Memberships starting at \\$2.50/m!](#)**

**Follow me  
on Twitter!**

@ConvertingColor