

Converting Colors

XYZ(73.9527, 73.4909, 75.8950)

Have a look what the booklet for
XYZ(73.9527, 73.4909, 75.8950)
contains.

XYZ(73.9552, 73.5127, 75.9372)	3
<i>Conversions</i>	4
<i>Details</i>	6
<i>Harmonies</i>	12
<i>Previews</i>	24
<i>Color Blindness Simulation</i>	28
<i>CSS Examples</i>	31

Color

**XYZ(73.9552, 73.5127,
75.9372)**

Conversions

Conversions Part 1

Format	Color
Hex	F2D9D9
RGB	242, 217, 217
RGB Percent	95%, 85%, 85%
CMY	0.0510, 0.1490, 0.1490
CMYK	0.00, 0.10, 0.10, 0.05
HSL	0°, 49%, 90%
HSV	0°, 10%, 95%
XYZ	73.9552, 73.5127, 75.9372
YIQ	224.4750, 14.9000, 5.3000

Conversions

Conversions Part 2

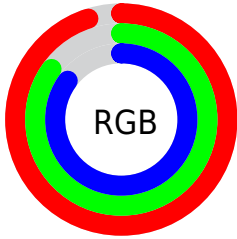
Format	Color
R _Y B	242, 217, 217
Decimal	15915481
CIE Lab	88.69, 8.63, 3.14
CIE LCh	89, 9.179, 20.007
Yxy	73.5127, 0.3310, 0.3291
Android (android.graphics.Color)	4294105561 (0xFFFF2D9D9)
YUV	224.4750, -3.6852, 15.3694
Hunter-Lab	85.7395, 3.9221, 7.5061

Details

The XYZ color **73.9552, 73.5127, 75.9372** is a light color, and the websafe version is hex **FFCCCC**. A complement of this color would be **76.3941, 84.6653, 96.3209**, and the grayscale version is **71.2112, 74.9197, 81.5876**.

A 20% lighter version of the original color is **95.0500, 100.0000, 108.9000**, and **39.6916, 38.8884, 39.5967** is the 20% darker color. If you saturate the color by 10%, you get **65.2497, 60.7747, 58.6277**, and if you desaturate by 10%, it is **84.0407, 88.2705, 95.9856**.

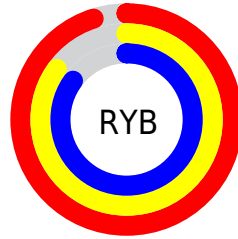
Distribution



Red (95%)

Green (85%)

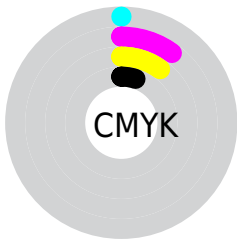
Blue (85%)



Red (95%)

Yellow (85%)

Blue (85%)

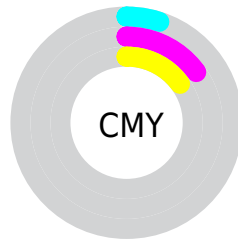


Cyan (0%)

Magenta (10%)

Yellow (10%)

Black (5%)



Cyan (5%)


Magenta (15%)


Yellow (15%)

Brightness & Saturation Gradients


These gradients show how the XYZ color 73.9552, 73.5127, 75.9372 changes by changing the brightness by 10 percent. The first figure shows a shift by +10% for each color and the second figure -10%.

Similar to the brightness gradients but the following saturation gradients show a change of the XYZ color 73.9552, 73.5127, 75.9372 by changing the saturation by 10% instead.


 73.9552, 73.5127,
75.9372

 73.9552, 73.5127,
75.9372


463.3714,
472.7898, 500.4738

 55.0485, 54.3953,
55.8747


123.8281,
124.2048, 129.3974

 39.6746, 38.9178,
39.6991


155.5251,
156.5482, 163.6322

 27.4680, 26.6958,
26.9920


192.2162,
194.0692, 203.4281

 18.0634, 17.3449,
17.3349

234.2669,
237.1520, 249.2037

 11.0955, 10.4807,
10.3090

282.0423,
286.1811, 301.3775

 6.1989, 5.7188,
5.4961

335.9080,

 3.0082, 2.6749,

341.5408, 360.3681

2.4774

396.2293,
403.6156, 426.5940

■ 1.1581, 0.9644,
0.8281

■ 0.0729, 0.0000,
0.0000

■ 73.9552, 73.5127,
75.9372

■ 73.9552, 73.5127,
75.9372

■ 65.2497, 60.7747,
58.6277

■ 84.0407, 88.2705,
95.9856

■ 57.8586, 49.9594,
43.9339

■ 90.4283, 97.6174,
108.6837

■ 51.7197, 40.9766,
31.7300

■ 46.7638, 33.7246,
21.8782

■ 42.9149, 28.0923,
14.2271

■ 40.0879, 23.9554,
8.6079

■ 38.1856, 21.1716,
4.8272

■ 37.0922, 19.5712,
2.6545

■ 36.6188, 18.8783,
1.7139

Harmonies

Analogous

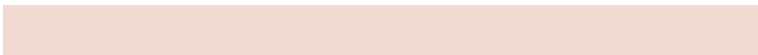
The Analogous color harmony consists of three colors that are next to each other on the color wheel.



74.1554, 73.5127, 82.1806



73.9552, 73.5127, 75.9372



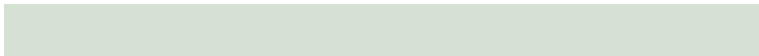
72.6479, 73.5127, 71.0472

Triad

The Triadic color harmony groups three colors that are evenly spaced from another and form a triangle on the color wheel.



73.9552, 73.5127, 75.9372



66.6556, 73.5127, 72.4484



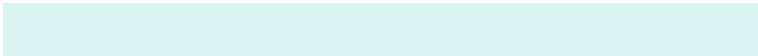
69.1343, 73.5127, 92.6812

Complementary

The Complementary color scheme is a pair of colors which are on the opposite of each other on the color wheel.



73.9552, 73.5127, 75.9372



76.3941, 84.6653, 96.3209

Split Complementary

Split-complementary colors differ from the complementary color scheme. The scheme consists of three colors, the original color and two neighbors of the complement color.



67.1669, 73.5127, 89.7674



73.9552, 73.5127, 75.9372



65.7560, 73.5127, 77.9425

Square

The Square scheme is like the rectangle color scheme, but the four colors are evenly spaced on the color wheel.



73.9552, 73.5127, 75.9372



68.4229, 73.5127, 69.1080



65.9412, 73.5127, 84.2938



71.3406, 73.5127, 92.0742

Rectangle

The Rectangle color scheme consists of four colors that form a rectangle on the color wheel.



73.9552, 73.5127, 75.9372



71.3396, 73.5127, 69.1071



65.9412, 73.5127, 84.2938



68.4239, 73.5127, 92.0753

Sweetspot

The Sweet Spot groups the original color and five complimentary colors.



73.9573, 73.5159, 75.9388



91.4509, 94.7336, 101.7446



77.4588, 74.9148, 94.3827



19.3736, 19.9833, 21.3786



0.0000, 0.0000, 0.0000



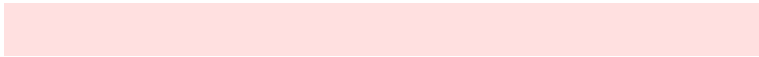
20.3446, 21.4041, 23.3091

Same Dimension

The Same Dimension uses a secret algorithm to generate beautiful new colors.



73.9573, 73.5159, 75.9388



81.5135, 80.1929, 81.9883



77.3012, 80.2037, 77.0534



15.7731, 15.7593, 16.3602



19.6718, 10.1417, 0.9207



1.6366, 0.8438, 0.0766

Inverse Universe

The Inverse Universe completely reimagines the original color for something new.



76.3941, 84.6653, 96.3209



84.6730, 94.6480, 108.4139



72.8012, 77.4793, 95.1232



16.2472, 17.9285, 20.3258



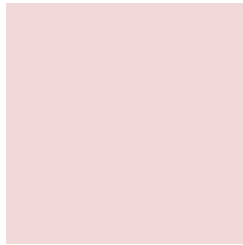
25.6611, 37.5463, 51.0226



2.1348, 3.1236, 4.2446

Previews

White Background



This preview shows how the XYZ color 73.9552, 73.5127, 75.9372 looks on a white background.

Color Contrast Check

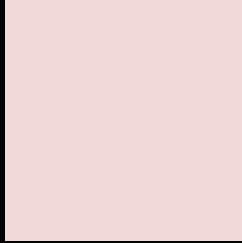
Large Text (above 18pt) WCAG AA × Fail

Any Text WCAG AA × Fail

Large Text (above 18pt) WCAG AAA × Fail

Any Text WCAG AAA × Fail

Black Background



This preview shows how the XYZ color 73.9552, 73.5127, 75.9372 looks on a black background.

Color Contrast Check

Large Text (above 18pt) WCAG AA ✓ Pass

Any Text WCAG AA ✓ Pass

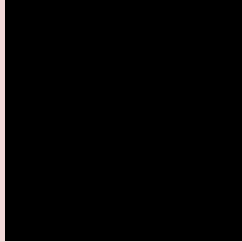
Large Text (above 18pt) WCAG AAA ✓ Pass

Any Text WCAG AAA ✓ Pass

If you want to check with other color combinations, try the [Color Contrast Checker](#).

XYZ 73.9552, 73.5127, 75.9372

Background



This preview shows how black text looks on a background with the XYZ color 73.9552, 73.5127, 75.9372.



This preview shows how white text looks on a background with the XYZ color 73.9552, 73.5127,

75.9372.

Color Blindness Simulation

Color vision deficiency is a very complex topic, and I could not describe the different causes any better than Wikipedia does, so if you want to learn more, you should check out their [article about color blindness](#).

Dichromacy



Original Color

73.9552, 73.5127, 75.9372

Protanopia

70.7181, 73.7408, 78.2163

Deuteranopia

74.8309, 73.2035, 75.8313



Tritanopia

76.1742, 73.6602, 86.5470

Trichromacy



Original Color

73.9552, 73.5127, 75.9372

Protanomaly

71.6581, 73.4567, 77.4196

Deuteranomaly

74.7364, 73.5340, 75.9001

Tritanomaly

75.3831, 73.7125, 82.9279

Monochromacy



Original Color

73.9552, 73.5127, 75.9372

Achromatopsia

70.8507, 74.5404, 81.1745

Achromatomaly

71.8626, 73.9223, 78.8875

CSS Examples

Text

The CSS property to change the color of the text to XYZ 73.9552, 73.5127, 75.9372 is called "color". The color property can be set on classes, ids or directly on the HTML element.

This example shows how text in the color rgb(242, 217, 217) looks like.

```
.text, #text, p{  
    color:rgb(242, 217, 217)  
}
```

If you want to add a text shadow in that color use the text-shadow property, you can generate a text shadow directly with our [CSS Text Shadow Generator](#).

Here you see how black text with a 4 pixel rgb(242, 217, 217) colored shadow looks like.

```
.shadow{ text-shadow: 4px 4px 2px rgb(242, 217, 217) }
```

Border

The CSS property to change the border of an element to XYZ 73.9552, 73.5127, 75.9372 is called "border". The border property can be set on classes, ids or directly on the HTML element.

This example shows the color as border, it can be applied via the CSS property "border" or "border-color".

```
.border, #border, table{ border:4px solid rgb(242, 217, 217) }
```


If only the border color should be changed use the property `border-color`.

```
.border{ border-color:rgb(242, 217, 217) }
```

If you want to add a box shadow in that color use:

Here you see how a box with a 4 pixel `rgb(242, 217, 217)` colored shadow looks like.

```
.boxshadow{ -moz-box-shadow:4px 4px 4px  
4px rgb(242, 217, 217); -webkit-box-  
shadow:4px 4px 4px 4px rgb(242, 217, 217);  
box-shadow:4px 4px 4px 4px rgb(242, 217,  
217) }
```

Background

The CSS property to change the background color of an element to XYZ 73.9552, 73.5127, 75.9372 is called "background". The background property can be set on classes, ids or directly on the HTML element.

```
.background, #background, body{  
background: rgb(242, 217, 217) }
```

If only the background color should be changed can be used:

```
.background{ background-color: rgb(242,  
217, 217) }
```

This example shows the color as background, it is applied via the CSS property "background".

To optimize and compress your CSS code, you can use our [online CSS compressor and optimizer](#) based on csstidy. If you want to create a linear or radial gradient as background or border, check our [CSS Gradient Generator](#).

Hey! You found this booklet interesting? Support Converting Colors with the new Membership Option!

The pro membership hides all ads, plus gives you double the colors in the color bucket, and more awesome pro features!

[Learn more, Memberships starting at \\$2.50/m!](#)

**Follow me
on Twitter!**

@ConvertingColor