

Converting Colors

XYZ(73.9728, 74.5727, 81.0162)

Have a look what the booklet for
XYZ(73.9728, 74.5727, 81.0162)
contains.

XYZ(73.9728, 74.5727, 81.0162)	3
<i>Conversions</i>	4
<i>Details</i>	6
<i>Harmonies</i>	12
<i>Previews</i>	24
<i>Color Blindness Simulation</i>	28
<i>CSS Examples</i>	31

Color

**XYZ(73.9728, 74.5727,
81.0162)**

Conversions

Conversions Part 1

Format	Color
Hex	EDDCE0
RGB	237, 220, 224
RGB Percent	93%, 86%, 88%
CMY	0.0706, 0.1372, 0.1216
CMYK	0.00, 0.07, 0.05, 0.07
HSL	346°, 32%, 90%
HSV	346°, 7%, 93%
XYZ	73.9728, 74.5727, 81.0162
YIQ	225.5390, 8.8480, 4.8480

Conversions

Conversions Part 2

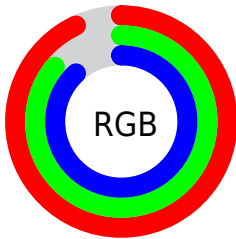
Format	Color
R _Y B	237, 220, 224
Decimal	15588576
CIE Lab	89.19, 6.50, 0.13
CIE LCh	89, 6.504, 1.187
Yxy	74.5727, 0.3222, 0.3248
Android (android.graphics.Color)	4293778656 (0xFFEDDCE0)
YUV	225.5390, -0.7587, 10.0513
Hunter-Lab	86.3555, 1.7824, 4.8247

Details

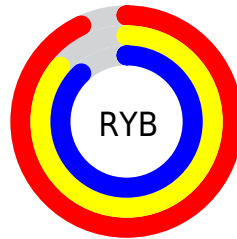
The XYZ color **73.9728, 74.5727, 81.0162** is a light color, and the websafe version is hex **CCCCCC**. A complement of this color would be **74.5102, 81.6692, 88.9314**, and the grayscale version is **71.9586, 75.7060, 82.4439**.

A 20% lighter version of the original color is **95.0500, 100.0000, 108.9000**, and **39.6726, 39.5986, 43.0884** is the 20% darker color. If you saturate the color by 10%, you get **65.8596, 62.0726, 66.8222**, and if you desaturate by 10%, it is **83.2341, 88.9477, 96.8880**.

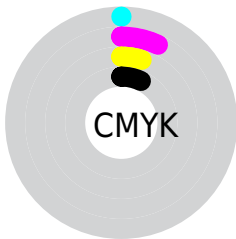
Distribution



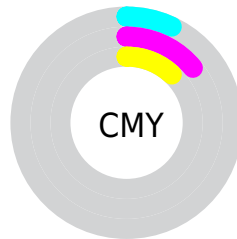
- Red (93%)
- Green (86%)
- Blue (88%)



- Red (93%)
- Yellow (86%)
- Blue (88%)



- Cyan (0%)
- Magenta (7%)
- Yellow (5%)
- Black (7%)



- Cyan (7%)
- Magenta (14%)
- Yellow (12%)

Brightness & Saturation Gradients

These gradients show how the XYZ color 73.9728, 74.5727, 81.0162 changes by changing the brightness by 10 percent. The first figure shows a shift by +10% for each color and the second figure -10%.

Similar to the brightness gradients but the following saturation gradients show a change of the XYZ color 73.9728, 74.5727, 81.0162 by changing the saturation by 10% instead.

73.9728, 74.5727,
81.0162

73.9728, 74.5727,
81.0162

463.4312,
476.4476, 518.1477

55.0630, 55.2629,
60.0239

123.8530,
125.7073, 136.6178

39.6862, 39.6122,
43.0124

155.5540,
158.3009, 172.0641

27.4771, 27.2364,
29.5634

192.2495,
196.0913, 213.1655

18.0703, 17.7508,
19.2582

234.3048,
239.4627, 260.3406

11.1005, 10.7712,
11.6783

282.0853,
288.7997, 314.0078

6.2022, 5.9132,
6.4052

335.9563,

3.0103, 2.7924,

344.4865, 374.5857

3.0202

396.2831,
406.9077, 442.4928

■ 1.1592, 1.0243,
1.1050

■ 0.0738, 0.0000,
0.0000

■ 73.9728, 74.5727,
81.0162

■ 73.9728, 74.5727,
81.0162

■ 65.8596, 62.0726,
66.8222

■ 83.2341, 88.9477,
96.8880

■ 58.8432, 51.3606,
54.2457

■ 88.7355, 96.7448,
108.6045

■ 52.8776, 42.3575,
43.2299

■ 47.9109, 34.9743,
33.7129

■ 43.8871, 29.1140,
25.6283

■ 40.7441, 24.6690,
18.9047

■ 38.4122, 21.5179,
13.4642

■ 36.8106, 19.5181,
9.2204

■ 35.8366, 18.4856,
6.0732

Harmonies

Analogous

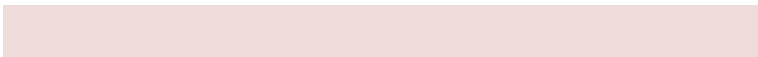
The Analogous color harmony consists of three colors that are next to each other on the color wheel.



73.5856, 74.5727, 85.4806



73.9728, 74.5727, 81.0162



73.5208, 74.5727, 76.7567

Triad

The Triadic color harmony groups three colors that are evenly spaced from another and form a triangle on the color wheel.



73.9728, 74.5727, 81.0162



69.3112, 74.5727, 73.9504



69.4191, 74.5727, 89.0946

Complementary

The Complementary color scheme is a pair of colors which are on the opposite of each other on the color wheel.



73.9728, 74.5727, 81.0162



74.5102, 81.6692, 88.9314

Split Complementary

Split-complementary colors differ from the complementary color scheme. The scheme consists of three colors, the original color and two neighbors of the complement color.



68.3014, 74.5727, 85.8053



73.9728, 74.5727, 81.0162



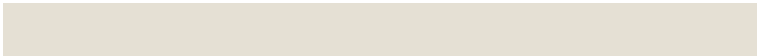
68.2398, 74.5727, 77.0589

Square

The Square scheme is like the rectangle color scheme, but the four colors are evenly spaced on the color wheel.



73.9728, 74.5727, 81.0162



70.8160, 74.5727, 72.7722



67.8729, 74.5727, 81.3781



70.9423, 74.5727, 90.2481

Rectangle

The Rectangle color scheme consists of four colors that form a rectangle on the color wheel.



73.9728, 74.5727, 81.0162



72.8083, 74.5727, 74.5783



67.8729, 74.5727, 81.3781



68.9843, 74.5727, 88.1961

Sweetspot

The Sweet Spot groups the original color and five complimentary colors.



73.9749, 74.5760, 81.0178



92.8228, 96.5404, 105.0906



74.4044, 74.5858, 90.5968



19.8912, 20.6998, 22.5337



0.0000, 0.0000, 0.0000



20.3446, 21.4041, 23.3091

Same Dimension

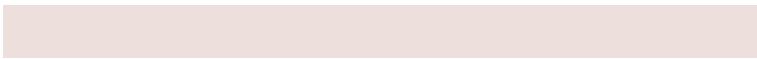
The Same Dimension uses a secret algorithm to generate beautiful new colors.



73.9749, 74.5760, 81.0178



85.4620, 85.1419, 92.3925



74.5686, 76.6206, 78.5730



15.2106, 15.1121, 16.3943



19.4959, 10.0011, 3.1470



1.5673, 0.7999, 0.4389

Inverse Universe

The Inverse Universe completely reimagines the original color for something new.



73.9749, 74.5760, 81.0178



85.4620, 85.1419, 92.3925



73.8720, 79.4687, 91.5673



15.2106, 15.1121, 16.3943



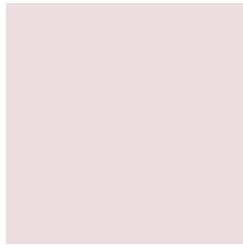
19.4959, 10.0011, 3.1470



1.5673, 0.7999, 0.4389

Previews

White Background



This preview shows how the XYZ color 73.9728, 74.5727, 81.0162 looks on a white background.

Color Contrast Check

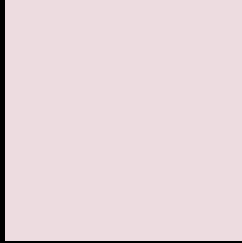
Large Text (above 18pt) WCAG AA × Fail

Any Text WCAG AA × Fail

Large Text (above 18pt) WCAG AAA × Fail

Any Text WCAG AAA × Fail

Black Background



This preview shows how the XYZ color 73.9728, 74.5727, 81.0162 looks on a black background.

Color Contrast Check

Large Text (above 18pt) WCAG AA ✓ Pass

Any Text WCAG AA ✓ Pass

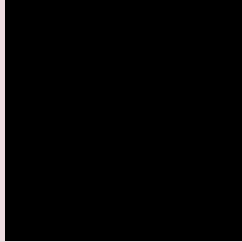
Large Text (above 18pt) WCAG AAA ✓ Pass

Any Text WCAG AAA ✓ Pass

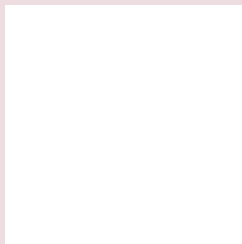
If you want to check with other color combinations, try the [Color Contrast Checker](#).

XYZ 73.9728, 74.5727, 81.0162

Background



This preview shows how black text looks on a background with the XYZ color 73.9728, 74.5727, 81.0162.

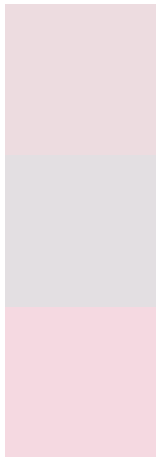


This preview shows how white text looks on a background with the XYZ color 73.9728, 74.5727,

Color Blindness Simulation

Color vision deficiency is a very complex topic, and I could not describe the different causes any better than Wikipedia does, so if you want to learn more, you should check out their [article about color blindness](#).

Dichromacy



Original Color

73.9728, 74.5727, 81.0162

Protanopia

71.7937, 74.5972, 82.5663

Deuteranopia

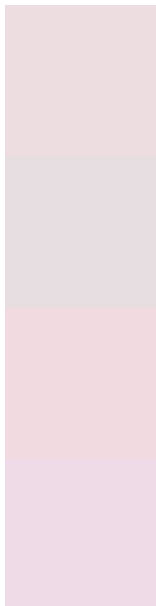
76.0596, 74.4744, 81.6004



Tritanopia

75.6634, 74.4917, 88.9877

Trichromacy



Original Color

73.9728, 74.5727, 81.0162

Protanomaly

72.6669, 74.6677, 81.8165

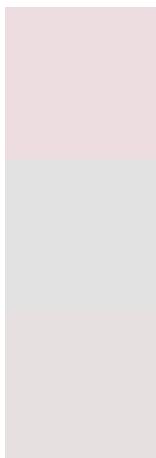
Deuteranomaly

75.2800, 74.4563, 81.6380

Tritanomaly

75.0152, 74.6097, 86.0487

Monochromacy



Original Color

73.9728, 74.5727, 81.0162

Achromatopsia

72.2879, 76.0525, 82.8211

Achromatomaly

72.8794, 75.5705, 81.9796

CSS Examples

Text

The CSS property to change the color of the text to XYZ 73.9728, 74.5727, 81.0162 is called "color". The color property can be set on classes, ids or directly on the HTML element.

This example shows how text in the color rgb(237, 220, 224) looks like.

```
.text, #text, p{  
    color:rgb(237, 220, 224)  
}
```

If you want to add a text shadow in that color use the text-shadow property, you can generate a text shadow directly with our [CSS Text Shadow Generator](#).

Here you see how black text with a 4 pixel rgb(237, 220, 224) colored shadow looks like.

```
.shadow{ text-shadow: 4px 4px 2px rgb(237, 220, 224) }
```

Border

The CSS property to change the border of an element to XYZ 73.9728, 74.5727, 81.0162 is called "border". The border property can be set on classes, ids or directly on the HTML element.

This example shows the color as border, it can be applied via the CSS property "border" or "border-color".

```
.border, #border, table{ border:4px solid rgb(237, 220, 224) }
```


If only the border color should be changed use the property `border-color`.

```
.border{ border-color:rgb(237, 220, 224) }
```

If you want to add a box shadow in that color use:

Here you see how a box with a 4 pixel `rgb(237, 220, 224)` colored shadow looks like.

```
.boxshadow{ -moz-box-shadow:4px 4px 4px  
4px rgb(237, 220, 224); -webkit-box-  
shadow:4px 4px 4px 4px rgb(237, 220, 224);  
box-shadow:4px 4px 4px 4px rgb(237, 220,  
224) }
```

Background

The CSS property to change the background color of an element to XYZ 73.9728, 74.5727, 81.0162 is called "background". The background property can be set on classes, ids or directly on the HTML element.

```
.background, #background, body{  
background: rgb(237, 220, 224) }
```

If only the background color should be changed can be used:

```
.background{ background-color: rgb(237,  
220, 224) }
```

This example shows the color as background, it is applied via the CSS property "background".

To optimize and compress your CSS code, you can use our [online CSS compressor and optimizer](#) based on csstidy. If you want to create a linear or radial gradient as background or border, check our [CSS Gradient Generator](#).

Hey! You found this booklet interesting? Support Converting Colors with the new Membership Option!

The pro membership hides all ads, plus gives you double the colors in the color bucket, and more awesome pro features!

[Learn more, Memberships starting at \\$2.50/m!](#)

**Follow me
on Twitter!**

@ConvertingColor