

Converting Colors

XYZ(74.0319, 74.7448, 79.6540)

Have a look what the booklet for
XYZ(74.0319, 74.7448, 79.6540)
contains.

XYZ(74.0379, 74.6375, 79.6115)	3
<i>Conversions</i>	4
<i>Details</i>	6
<i>Harmonies</i>	12
<i>Previews</i>	24
<i>Color Blindness Simulation</i>	28
<i>CSS Examples</i>	31

Color

**XYZ(74.0379, 74.6375,
79.6115)**

Conversions

Conversions Part 1

Format	Color
Hex	EEDCDE
RGB	238, 220, 222
RGB Percent	93%, 86%, 87%
CMY	0.0667, 0.1372, 0.1294
CMYK	0.00, 0.08, 0.07, 0.07
HSL	353°, 35%, 90%
HSV	353°, 8%, 93%
XYZ	74.0379, 74.6375, 79.6115
YIQ	225.6100, 10.0860, 4.4380

Conversions

Conversions Part 2

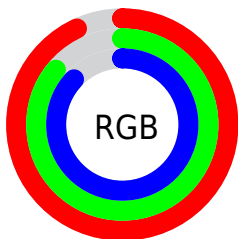
Format	Color
R _Y B	238, 220, 222
Decimal	15654110
CIE Lab	89.22, 6.51, 1.24
CIE LCh	89, 6.624, 10.796
Yxy	74.6375, 0.3243, 0.3269
Android (android.graphics.Color)	4293844190 (0xFFEEDCDE)
YUV	225.6100, -1.7797, 10.8660
Hunter-Lab	86.3930, 1.7849, 5.8391

Details

The XYZ color **74.0379, 74.6375, 79.6115** is a light color, and the websafe version is hex **CCCCCC**. A complement of this color would be **75.2329, 82.4227, 91.3049**, and the grayscale version is **72.0163, 75.7668, 82.5100**.

A 20% lighter version of the original color is **95.0500, 100.0000, 108.9000**, and **39.7216, 39.6454, 42.1180** is the 20% darker color. If you saturate the color by 10%, you get **65.5705, 61.9596, 63.6638**, and if you desaturate by 10%, it is **83.7547, 89.2428, 97.7337**.

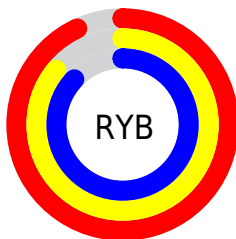
Distribution



Red (93%)

Green (86%)

Blue (87%)



Red (93%)

Yellow (86%)

Blue (87%)

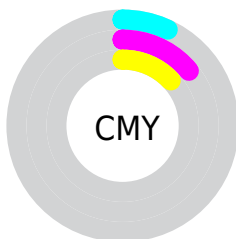


Cyan (0%)

Magenta (8%)

Yellow (7%)

Black (7%)



Cyan (7%)


Magenta (14%)


Yellow (13%)

Brightness & Saturation Gradients


These gradients show how the XYZ color 74.0379, 74.6375, 79.6115 changes by changing the brightness by 10 percent. The first figure shows a shift by +10% for each color and the second figure -10%.

Similar to the brightness gradients but the following saturation gradients show a change of the XYZ color 74.0379, 74.6375, 79.6115 by changing the saturation by 10% instead.


 74.0379, 74.6375,
79.6115

 74.0379, 74.6375,
79.6115


463.6525,
476.6707, 513.2948

 55.1165, 55.3160,
58.8744


123.9447,
125.7991, 134.6258

 39.7292, 39.6548,
42.0927


155.6608,
158.4079, 169.7402

 27.5107, 27.2695,
28.8478


192.3726,
196.2147, 210.4840

 18.0957, 17.7757,
18.7211

234.4452,
239.6037, 257.2759

 11.1188, 10.7891,
11.2942

282.2442,
288.9595, 310.5344

 6.2147, 5.9252,
6.1484

336.1348,

 3.0180, 2.7996,

344.6663, 370.6780

2.8653

396.4824,
407.1085, 438.1253

■ 1.1633, 1.0280,
1.0263

■ 0.0771, 0.0000,
0.0000

■ 74.0379, 74.6375,
79.6115

■ 74.0379, 74.6375,
79.6115

■ 65.5705, 61.9596,
63.6638

■ 83.7547, 89.2428,
97.7337

■ 58.2958, 51.1193,
49.8040

■ 89.0703, 96.9173,
108.6202

■ 52.1618, 42.0341,
37.9470

■ 47.1104, 34.6118,
28.0000

■ 43.0784, 28.7513,
19.8628

■ 39.9958, 24.3408,
13.4258

■ 37.7838, 21.2534,
8.5679

■ 36.3507, 19.3405,
5.1513

■ 35.5780, 18.4052,
3.0125

Harmonies

Analogous

The Analogous color harmony consists of three colors that are next to each other on the color wheel.



73.9166, 74.6375, 84.2309



74.0379, 74.6375, 79.6115



73.3198, 74.6375, 75.5891

Triad

The Triadic color harmony groups three colors that are evenly spaced from another and form a triangle on the color wheel.



74.0379, 74.6375, 79.6115



68.9292, 74.6375, 74.7132



69.9232, 74.6375, 89.9670

Complementary

The Complementary color scheme is a pair of colors which are on the opposite of each other on the color wheel.



74.0379, 74.6375, 79.6115



75.2329, 82.4227, 91.3049

Split Complementary

Split-complementary colors differ from the complementary color scheme. The scheme consists of three colors, the original color and two neighbors of the complement color.



68.6136, 74.6375, 87.2235



74.0379, 74.6375, 79.6115



68.0458, 74.6375, 78.3746

Square

The Square scheme is like the rectangle color scheme, but the four colors are evenly spaced on the color wheel.



74.0379, 74.6375, 79.6115



70.3601, 74.6375, 72.8333



67.9311, 74.6375, 82.9464



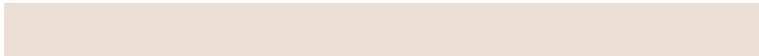
71.5245, 74.6375, 90.3290

Rectangle

The Rectangle color scheme consists of four colors that form a rectangle on the color wheel.



74.0379, 74.6375, 79.6115



72.4681, 74.6375, 73.7424



67.9311, 74.6375, 82.9464



69.4349, 74.6375, 89.2880

Sweetspot

The Sweet Spot groups the original color and five complimentary colors.



74.0400, 74.6408, 79.6131



92.7230, 96.5005, 104.5652



75.5869, 75.1786, 91.4168



19.8709, 20.6917, 22.4267



0.0000, 0.0000, 0.0000



20.3446, 21.4041, 23.3091

Same Dimension

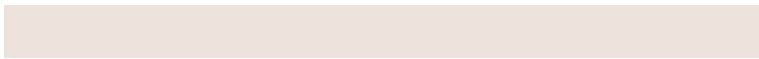
The Same Dimension uses a secret algorithm to generate beautiful new colors.



74.0400, 74.6408, 79.6131



85.0477, 84.9762, 90.2106



75.6221, 78.2306, 78.8284



15.8441, 15.7873, 16.7351



19.8010, 10.1928, 1.6026



1.6706, 0.8573, 0.2561

Inverse Universe

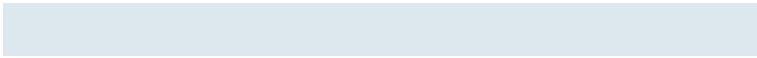
The Inverse Universe completely reimagines the original color for something new.



74.0400, 74.6408, 79.6131



85.0477, 84.9762, 90.2106



73.5544, 78.5991, 92.1842



15.8441, 15.7873, 16.7351



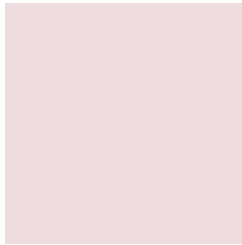
19.8010, 10.1928, 1.6026



1.6706, 0.8573, 0.2561

Previews

White Background



This preview shows how the XYZ color 74.0379, 74.6375, 79.6115 looks on a white background.

Color Contrast Check

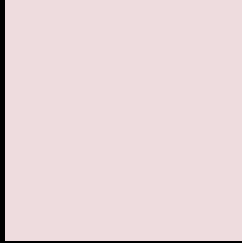
Large Text (above 18pt) WCAG AA × Fail

Any Text WCAG AA × Fail

Large Text (above 18pt) WCAG AAA × Fail

Any Text WCAG AAA × Fail

Black Background



This preview shows how the XYZ color 74.0379, 74.6375, 79.6115 looks on a black background.

Color Contrast Check

Large Text (above 18pt) WCAG AA ✓ Pass

Any Text WCAG AA ✓ Pass

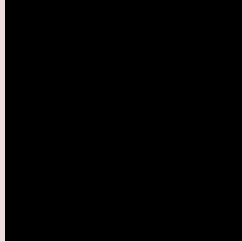
Large Text (above 18pt) WCAG AAA ✓ Pass

Any Text WCAG AAA ✓ Pass

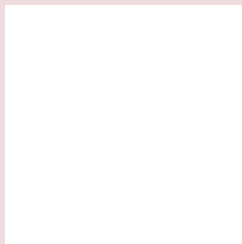
If you want to check with other color combinations, try the [Color Contrast Checker](#).

XYZ 74.0379, 74.6375, 79.6115

Background



This preview shows how black text looks on a background with the XYZ color 74.0379, 74.6375, 79.6115.



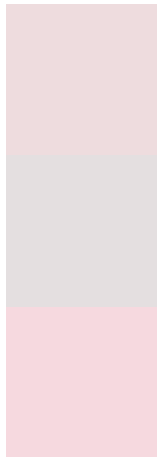
This preview shows how white text looks on a background with the XYZ color 74.0379, 74.6375,

79.6115.

Color Blindness Simulation

Color vision deficiency is a very complex topic, and I could not describe the different causes any better than Wikipedia does, so if you want to learn more, you should check out their [article about color blindness](#).

Dichromacy



Original Color

74.0379, 74.6375, 79.6115

Protanopia

71.8371, 74.6512, 81.1439

Deuteranopia

76.1382, 74.5463, 80.1880



Tritanopia

76.0020, 74.6662, 89.0035

Trichromacy



Original Color

74.0379, 74.6375, 79.6115

Protanomaly

72.7193, 74.7261, 80.4029

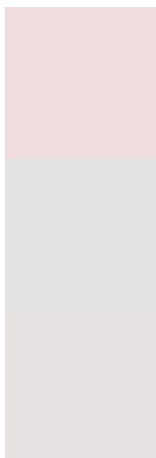
Deuteranomaly

75.3528, 74.5252, 80.2253

Tritanomaly

75.2110, 74.7269, 85.3226

Monochromacy



Original Color

74.0379, 74.6375, 79.6115

Achromatopsia

72.2879, 76.0525, 82.8211

Achromatomaly

72.8794, 75.5705, 81.9796

CSS Examples

Text

The CSS property to change the color of the text to XYZ 74.0379, 74.6375, 79.6115 is called "color". The color property can be set on classes, ids or directly on the HTML element.

This example shows how text in the color rgb(238, 220, 222) looks like.

```
.text, #text, p{  
    color:rgb(238, 220, 222)  
}
```

If you want to add a text shadow in that color use the text-shadow property, you can generate a text shadow directly with our [CSS Text Shadow Generator](#).

Here you see how black text with a 4 pixel rgb(238, 220, 222) colored shadow looks like.

```
.shadow{ text-shadow: 4px 4px 2px rgb(238, 220, 222) }
```

Border

The CSS property to change the border of an element to XYZ 74.0379, 74.6375, 79.6115 is called "border". The border property can be set on classes, ids or directly on the HTML element.

This example shows the color as border, it can be applied via the CSS property "border" or "border-color".

```
.border, #border, table{ border:4px solid rgb(238, 220, 222) }
```


If only the border color should be changed use the property `border-color`.

```
.border{ border-color:rgb(238, 220, 222) }
```

If you want to add a box shadow in that color use:

Here you see how a box with a 4 pixel `rgb(238, 220, 222)` colored shadow looks like.

```
.boxshadow{ -moz-box-shadow:4px 4px 4px  
4px rgb(238, 220, 222); -webkit-box-  
shadow:4px 4px 4px 4px rgb(238, 220, 222);  
box-shadow:4px 4px 4px 4px rgb(238, 220,  
222) }
```

Background

The CSS property to change the background color of an element to XYZ 74.0379, 74.6375, 79.6115 is called "background". The background property can be set on classes, ids or directly on the HTML element.

```
.background, #background, body{  
background: rgb(238, 220, 222) }
```

If only the background color should be changed can be used:

```
.background{ background-color: rgb(238,  
220, 222) }
```

This example shows the color as background, it is applied via the CSS property "background".

To optimize and compress your CSS code, you can use our [online CSS compressor and optimizer](#) based on csstidy. If you want to create a linear or radial gradient as background or border, check our [CSS Gradient Generator](#).

Hey! You found this booklet interesting? Support Converting Colors with the new Membership Option!

The pro membership hides all ads, plus gives you double the colors in the color bucket, and more awesome pro features!

[Learn more, Memberships starting at \\$2.50/m!](#)

**Follow me
on Twitter!**

@ConvertingColor