

Converting Colors

XYZ(74.0767, 74.4791, 77.7938)

Have a look what the booklet for
XYZ(74.0767, 74.4791, 77.7938)
contains.

XYZ(74.0529, 74.3028, 77.4567)	3
<i>Conversions</i>	4
<i>Details</i>	6
<i>Harmonies</i>	12
<i>Previews</i>	24
<i>Color Blindness Simulation</i>	28
<i>CSS Examples</i>	31

Color

**XYZ(74.0529, 74.3028,
77.4567)**

Conversions

Conversions Part 1

Format	Color
Hex	F0DBDB
RGB	240, 219, 219
RGB Percent	94%, 86%, 86%
CMY	0.0588, 0.1412, 0.1412
CMYK	0.00, 0.09, 0.09, 0.06
HSL	0°, 41%, 90%
HSV	0°, 9%, 94%
XYZ	74.0529, 74.3028, 77.4567
YIQ	225.2790, 12.5160, 4.4520

Conversions

Conversions Part 2

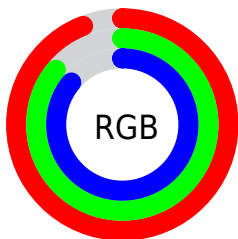
Format	Color
R _Y B	240, 219, 219
Decimal	15784923
CIE Lab	89.07, 7.22, 2.61
CIE LCh	89, 7.674, 19.881
Yxy	74.3028, 0.3279, 0.3290
Android (android.graphics.Color)	4293975003 (0xFFFF0DBDB)
YUV	225.2790, -3.0955, 12.9103
Hunter-Lab	86.1991, 2.4995, 7.0626

Details

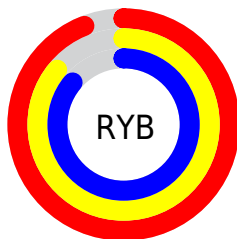
The XYZ color **74.0529, 74.3028, 77.4567** is a light color, and the websafe version is hex **CCCCCC**. A complement of this color would be **76.1014, 83.6700, 94.5779**, and the grayscale version is **71.7857, 75.5242, 82.2458**.

A 20% lighter version of the original color is **95.0500, 100.0000, 108.9000**, and **39.7435, 39.4216, 40.6364** is the 20% darker color. If you saturate the color by 10%, you get **65.3035, 61.5006, 60.0595**, and if you desaturate by 10%, it is **84.1644, 89.0984, 97.5571**.

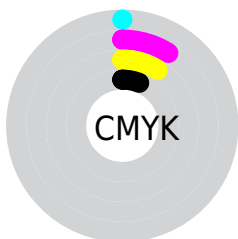
Distribution



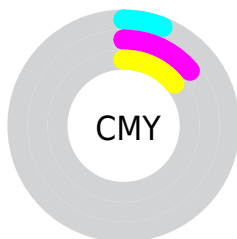
- Red (94%)
- Green (86%)
- Blue (86%)



- Red (94%)
- Yellow (86%)
- Blue (86%)



- Cyan (0%)
- Magenta (9%)
- Yellow (9%)
- Black (6%)





- Cyan (6%)
- Magenta (14%)
- Yellow (14%)

Brightness & Saturation Gradients


These gradients show how the XYZ color 74.0529, 74.3028, 77.4567 changes by changing the brightness by 10 percent. The first figure shows a shift by +10% for each color and the second figure -10%.

Similar to the brightness gradients but the following saturation gradients show a change of the XYZ color 74.0529, 74.3028, 77.4567 by changing the saturation by 10% instead.


 74.0529, 74.3028,
77.4567

 74.0529, 74.3028,
77.4567


463.7034,
475.5178, 505.7987

 55.1288, 55.0419,
57.1140


123.9659,
125.3250, 131.5629

 39.7391, 39.4353,
40.6868


155.6855,
157.8550, 166.1634

 27.5185, 27.0985,
27.7566


192.4009,
195.5769, 206.3536

 18.1016, 17.6472,
17.9048

234.4776,
238.8750, 252.5520

 11.1231, 10.6970,
10.7129

282.2808,
288.1338, 305.1772

 6.2176, 5.8635,
5.7624

336.1759,

 3.0197, 2.7622,

343.7376, 364.6477

2.6347

396.5283,
406.0708, 431.3820

■ 1.1642, 1.0089,
0.9103

■ 0.0778, 0.0000,
0.0000

■ 74.0529, 74.3028,
77.4567

■ 74.0529, 74.3028,
77.4567

■ 65.3035, 61.5006,
60.0595

■ 84.1644, 89.0984,
97.5571

■ 57.8522, 50.5974,
45.2459

■ 89.7456, 97.2655,
108.6518

■ 51.6389, 41.5057,
32.8940

■ 46.5968, 34.1276,
22.8706

■ 42.6524, 28.3556,
15.0298

■ 39.7240, 24.0703,
9.2091

■ 37.7186, 21.1355,
5.2236

■ 36.5263, 19.3905,
2.8545

■ 35.9851, 18.5982,
1.7794

Harmonies

Analogous

The Analogous color harmony consists of three colors that are next to each other on the color wheel.



74.2162, 74.3028, 82.7231



74.0529, 74.3028, 77.4567



72.9614, 74.3028, 73.2924

Triad

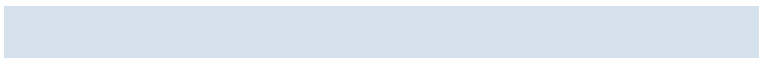
The Triadic color harmony groups three colors that are evenly spaced from another and form a triangle on the color wheel.



74.0529, 74.3028, 77.4567



67.9126, 74.3028, 74.4568



69.9937, 74.3028, 91.4532

Complementary

The Complementary color scheme is a pair of colors which are on the opposite of each other on the color wheel.



74.0529, 74.3028, 77.4567



76.1014, 83.6700, 94.5779

Split Complementary

Split-complementary colors differ from the complementary color scheme. The scheme consists of three colors, the original color and two neighbors of the complement color.



68.3343, 74.3028, 89.0233



74.0529, 74.3028, 77.4567



67.1469, 74.3028, 79.1100

Square

The Square scheme is like the rectangle color scheme, but the four colors are evenly spaced on the color wheel.



74.0529, 74.3028, 77.4567



69.4087, 74.3028, 71.6139



67.2999, 74.3028, 84.4503



71.8505, 74.3028, 90.9627

Rectangle

The Rectangle color scheme consists of four colors that form a rectangle on the color wheel.



74.0529, 74.3028, 77.4567



71.8647, 74.3028, 71.6274



67.2999, 74.3028, 84.4503



69.3948, 74.3028, 90.9469

Sweetspot

The Sweet Spot groups the original color and five complimentary colors.



74.0550, 74.3061, 77.4583



91.4510, 94.7338, 101.7446



76.9958, 75.4806, 92.9501



19.3736, 19.9833, 21.3786



0.0000, 0.0000, 0.0000



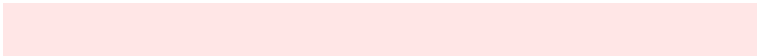
20.3446, 21.4041, 23.3091

Same Dimension

The Same Dimension uses a secret algorithm to generate beautiful new colors.



74.0550, 74.3061, 77.4583



83.6121, 83.2637, 86.1600



76.8802, 79.9565, 78.4000



15.7731, 15.7594, 16.3602



19.6719, 10.1418, 0.9207



1.6366, 0.8439, 0.0766

Inverse Universe

The Inverse Universe completely reimagines the original color for something new.



76.1014, 83.6700, 94.5779



86.2812, 95.4771, 108.4892



73.1005, 77.6681, 93.5776



16.2472, 17.9284, 20.3258



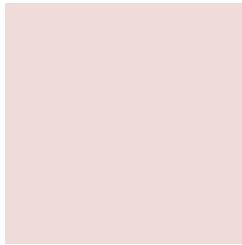
25.6597, 37.5437, 51.0221



2.1347, 3.1235, 4.2446

Previews

White Background



This preview shows how the XYZ color 74.0529, 74.3028, 77.4567 looks on a white background.

Color Contrast Check

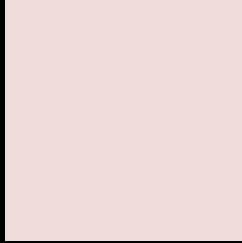
Large Text (above 18pt) WCAG AA × Fail

Any Text WCAG AA × Fail

Large Text (above 18pt) WCAG AAA × Fail

Any Text WCAG AAA × Fail

Black Background



This preview shows how the XYZ color 74.0529, 74.3028, 77.4567 looks on a black background.

Color Contrast Check

Large Text (above 18pt) WCAG AA ✓ Pass

Any Text WCAG AA ✓ Pass

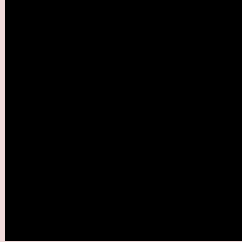
Large Text (above 18pt) WCAG AAA ✓ Pass

Any Text WCAG AAA ✓ Pass

If you want to check with other color combinations, try the [Color Contrast Checker](#).

XYZ 74.0529, 74.3028, 77.4567

Background



This preview shows how black text looks on a background with the XYZ color 74.0529, 74.3028, 77.4567.



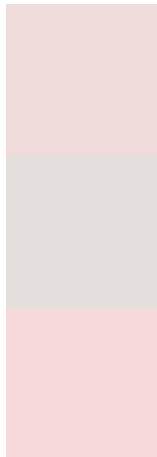
This preview shows how white text looks on a background with the XYZ color 74.0529, 74.3028,

77.4567.

Color Blindness Simulation

Color vision deficiency is a very complex topic, and I could not describe the different causes any better than Wikipedia does, so if you want to learn more, you should check out their [article about color blindness](#).

Dichromacy



Original Color

74.0529, 74.3028, 77.4567

Protanopia

71.4337, 74.4898, 79.0196

Deuteranopia

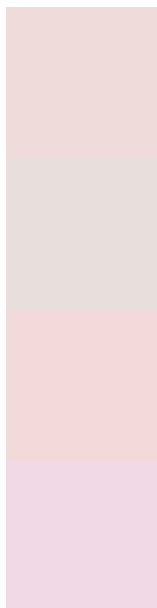
75.6998, 74.0004, 77.3115



Tritanopia

76.2821, 74.4435, 88.1904

Trichromacy



Original Color

74.0529, 74.3028, 77.4567

Protanomaly

72.3183, 74.5657, 78.2912

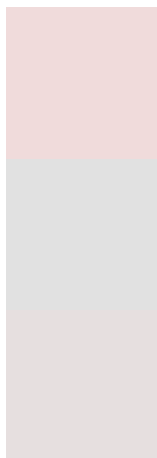
Deuteranomaly

74.9073, 73.9733, 77.3481

Tritanomaly

75.4899, 74.5007, 84.5301

Monochromacy



Original Color

74.0529, 74.3028, 77.4567

Achromatopsia

71.5672, 75.2942, 81.9954

Achromatomaly

72.3401, 74.9261, 80.4615

CSS Examples

Text

The CSS property to change the color of the text to XYZ 74.0529, 74.3028, 77.4567 is called "color". The color property can be set on classes, ids or directly on the HTML element.

This example shows how text in the color rgb(240, 219, 219) looks like.

```
.text, #text, p{  
    color:rgb(240, 219, 219)  
}
```

If you want to add a text shadow in that color use the text-shadow property, you can generate a text shadow directly with our [CSS Text Shadow Generator](#).

Here you see how black text with a 4 pixel rgb(240, 219, 219) colored shadow looks like.

```
.shadow{ text-shadow: 4px 4px 2px rgb(240, 219, 219) }
```

Border

The CSS property to change the border of an element to XYZ 74.0529, 74.3028, 77.4567 is called "border". The border property can be set on classes, ids or directly on the HTML element.

This example shows the color as border, it can be applied via the CSS property "border" or "border-color".

```
.border, #border, table{ border:4px solid rgb(240, 219, 219) }
```


If only the border color should be changed use the property `border-color`.

```
.border{ border-color:rgb(240, 219, 219) }
```

If you want to add a box shadow in that color use:

Here you see how a box with a 4 pixel `rgb(240, 219, 219)` colored shadow looks like.

```
.boxshadow{ -moz-box-shadow:4px 4px 4px  
4px rgb(240, 219, 219); -webkit-box-  
shadow:4px 4px 4px 4px rgb(240, 219, 219);  
box-shadow:4px 4px 4px 4px rgb(240, 219,  
219) }
```

Background

The CSS property to change the background color of an element to XYZ 74.0529, 74.3028, 77.4567 is called "background". The background property can be set on classes, ids or directly on the HTML element.

```
.background, #background, body{  
background: rgb(240, 219, 219) }
```

If only the background color should be changed can be used:

```
.background{ background-color: rgb(240,  
219, 219) }
```

This example shows the color as background, it is applied via the CSS property "background".

To optimize and compress your CSS code, you can use our [online CSS compressor and optimizer](#) based on csstidy. If you want to create a linear or radial gradient as background or border, check our [CSS Gradient Generator](#).

Hey! You found this booklet interesting? Support Converting Colors with the new Membership Option!

The pro membership hides all ads, plus gives you double the colors in the color bucket, and more awesome pro features!

[Learn more, Memberships starting at \\$2.50/m!](#)

**Follow me
on Twitter!**

@ConvertingColor