

Converting Colors

XYZ(74.1112, 74.7078, 78.2292)

Have a look what the booklet for
XYZ(74.1112, 74.7078, 78.2292)
contains.

XYZ(74.1081, 74.7044, 78.2236)	3
<i>Conversions</i>	4
<i>Details</i>	6
<i>Harmonies</i>	12
<i>Previews</i>	24
<i>Color Blindness Simulation</i>	28
<i>CSS Examples</i>	31

Color

**XYZ(74.1081, 74.7044,
78.2236)**

Conversions

Conversions Part 1

Format	Color
Hex	EFDCDC
RGB	239, 220, 220
RGB Percent	94%, 86%, 86%
CMY	0.0627, 0.1372, 0.1372
CMYK	0.00, 0.08, 0.08, 0.06
HSL	0°, 37%, 90%
HSV	0°, 8%, 94%
XYZ	74.1081, 74.7044, 78.2236
YIQ	225.6810, 11.3240, 4.0280

Conversions

Conversions Part 2

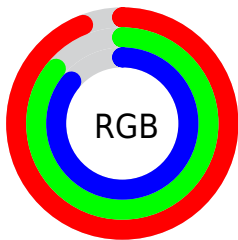
Format	Color
RYB	239, 220, 220
Decimal	15719644
CIELab	89.25, 6.52, 2.35
CIElCh	89, 6.927, 19.816
Yxy	74.7044, 0.3264, 0.3290
Android (android.graphics.Color)	4293909724 (0xFFEFD CDC)
YUV	225.6810, -2.8007, 11.6808
Hunter-Lab	86.4317, 1.7936, 6.8428

Details

The XYZ color **74.1081, 74.7044, 78.2236** is a light color, and the websafe version is hex **CCCCCC**. A complement of this color would be **75.9616, 83.1794, 93.7140**, and the grayscale version is **72.0740, 75.8275, 82.5761**.

A 20% lighter version of the original color is **95.0500, 100.0000, 108.9000**, and **39.7751, 39.6942, 41.1627** is the 20% darker color. If you saturate the color by 10%, you get **65.3373, 61.8709, 60.7837**, and if you desaturate by 10%, it is **84.2320, 89.5182, 98.3489**.

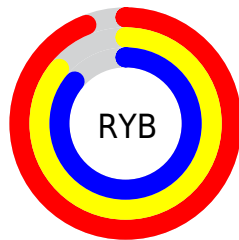
Distribution



Red (94%)

Green (86%)

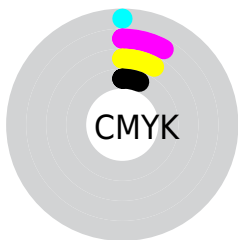
Blue (86%)



Red (94%)

Yellow (86%)

Blue (86%)

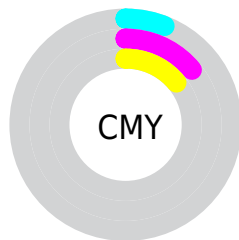


Cyan (0%)

Magenta (8%)

Yellow (8%)

Black (6%)



Cyan (6%)

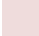
Magenta (14%)


Yellow (14%)

Brightness & Saturation Gradients


These gradients show how the XYZ color 74.1081, 74.7044, 78.2236 changes by changing the brightness by 10 percent. The first figure shows a shift by +10% for each color and the second figure -10%.

Similar to the brightness gradients but the following saturation gradients show a change of the XYZ color 74.1081, 74.7044, 78.2236 by changing the saturation by 10% instead.

 74.1081, 74.7044,
78.2236

 74.1081, 74.7044,
78.2236

463.8909,
476.9009, 508.4739

 55.1741, 55.3708,
57.7401


124.0437,
125.8938, 132.6540

 39.7755, 39.6986,
41.1865


155.7761,
158.5184, 167.4381

 27.5470, 27.3037,
28.1440


192.5052,
196.3421, 207.8260

 18.1232, 17.8014,
18.1943

234.5966,
239.7493, 254.2365

 11.1387, 10.8075,
10.9187

282.4155,
289.1244, 307.0880

 6.2282, 5.9375,
5.8987

336.3272,

 3.0263, 2.8071,

344.8518, 366.7990

2.7158

396.6973,
407.3158, 433.7881

■ 1.1677, 1.0319,
0.9514

■ 0.0806, 0.0000,
0.0000

■ 74.1081, 74.7044,
78.2236

■ 74.1081, 74.7044,
78.2236

■ 65.3373, 61.8709,
60.7837

■ 84.2320, 89.5182,
98.3489

■ 57.8564, 50.9244,
45.9112

■ 89.4071, 97.0910,
108.6359

■ 51.6065, 41.7791,
33.4863

■ 46.5217, 34.3386,
23.3781

■ 42.5299, 28.4972,
15.4430

■ 39.5510, 24.1380,
9.5220

■ 37.4941, 21.1279,
5.4341

■ 36.2520, 19.3099,
2.9660

■ 35.6776, 18.4692,
1.8252

Harmonies

Analogous

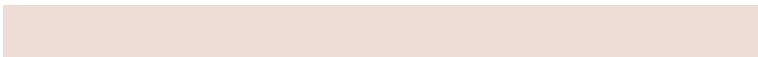
The Analogous color harmony consists of three colors that are next to each other on the color wheel.



74.2536, 74.7044, 82.9984



74.1081, 74.7044, 78.2236



73.1235, 74.7044, 74.4301

Triad

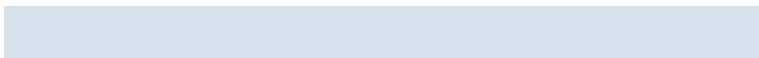
The Triadic color harmony groups three colors that are evenly spaced from another and form a triangle on the color wheel.



74.1081, 74.7044, 78.2236



68.5485, 74.7044, 75.4773



70.4308, 74.7044, 90.8565

Complementary

The Complementary color scheme is a pair of colors which are on the opposite of each other on the color wheel.



74.1081, 74.7044, 78.2236



75.9616, 83.1794, 93.7140

Split Complementary

Split-complementary colors differ from the complementary color scheme. The scheme consists of three colors, the original color and two neighbors of the complement color.



68.9264, 74.7044, 88.6657



74.1081, 74.7044, 78.2236



67.8512, 74.7044, 79.7046

Square

The Square scheme is like the rectangle color scheme, but the four colors are evenly spaced on the color wheel.



74.1081, 74.7044, 78.2236



69.9075, 74.7044, 72.8887



67.9884, 74.7044, 84.5389



72.1125, 74.7044, 90.4214

Rectangle

The Rectangle color scheme consists of four colors that form a rectangle on the color wheel.



74.1081, 74.7044, 78.2236



72.1324, 74.7044, 72.9077



67.9884, 74.7044, 84.5389



69.8880, 74.7044, 90.3995

Sweetspot

The Sweet Spot groups the original color and five complimentary colors.



74.1102, 74.7077, 78.2252



92.6345, 96.4656, 104.0977



76.7708, 75.7702, 92.2413



19.8529, 20.6846, 22.3315



0.0000, 0.0000, 0.0000



20.3446, 21.4041, 23.3091

Same Dimension

The Same Dimension uses a secret algorithm to generate beautiful new colors.



74.1102, 74.7077, 78.2252



83.6122, 83.2639, 86.1600



76.6738, 79.8349, 79.0797



15.7731, 15.7594, 16.3603



19.6719, 10.1419, 0.9208



1.6366, 0.8439, 0.0766

Inverse Universe

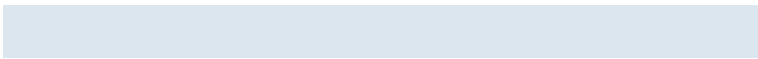
The Inverse Universe completely reimagines the original color for something new.



75.9616, 83.1794, 93.7140



86.2811, 95.4769, 108.4891



73.2541, 77.7645, 92.8115



16.2471, 17.9284, 20.3258



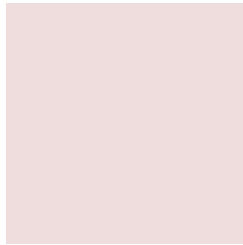
25.6592, 37.5427, 51.0220



2.1347, 3.1234, 4.2446

Previews

White Background



This preview shows how the XYZ color 74.1081, 74.7044, 78.2236 looks on a white background.

Color Contrast Check

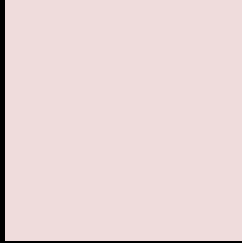
Large Text (above 18pt) WCAG AA × Fail

Any Text WCAG AA × Fail

Large Text (above 18pt) WCAG AAA × Fail

Any Text WCAG AAA × Fail

Black Background



This preview shows how the XYZ color 74.1081, 74.7044, 78.2236 looks on a black background.

Color Contrast Check

Large Text (above 18pt) WCAG AA ✓ Pass

Any Text WCAG AA ✓ Pass

Large Text (above 18pt) WCAG AAA ✓ Pass

Any Text WCAG AAA ✓ Pass

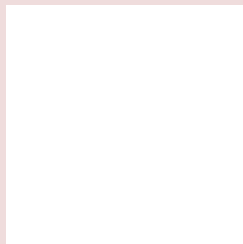
If you want to check with other color combinations, try the [Color Contrast Checker](#).

XYZ 74.1081, 74.7044, 78.2236

Background



This preview shows how black text looks on a background with the XYZ color 74.1081, 74.7044, 78.2236.

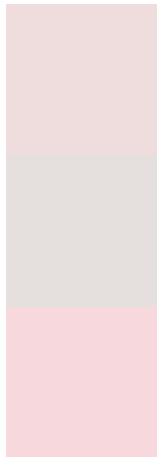


This preview shows how white text looks on a background with the XYZ color 74.1081, 74.7044,

Color Blindness Simulation

Color vision deficiency is a very complex topic, and I could not describe the different causes any better than Wikipedia does, so if you want to learn more, you should check out their [article about color blindness](#).

Dichromacy



Original Color

74.1081, 74.7044, 78.2236

Protanopia

71.8856, 74.7073, 79.7384

Deuteranopia

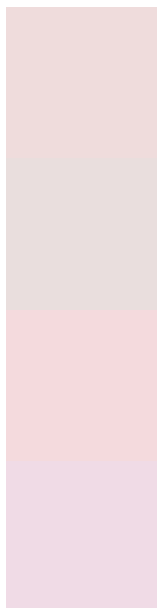
76.2218, 74.6203, 78.7925



Tritanopia

76.3424, 74.8417, 89.0195

Trichromacy



Original Color

74.1081, 74.7044, 78.2236

Protanomaly

72.7767, 74.7866, 79.0061

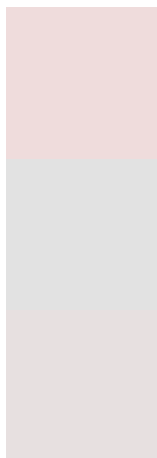
Deuteranomaly

75.4308, 74.5964, 78.8295

Tritanomaly

75.5496, 74.9015, 85.3384

Monochromacy



Original Color

74.1081, 74.7044, 78.2236

Achromatopsia

72.2879, 76.0525, 82.8211

Achromatomaly

73.0652, 75.6821, 81.2782

CSS Examples

Text

The CSS property to change the color of the text to XYZ 74.1081, 74.7044, 78.2236 is called "color". The color property can be set on classes, ids or directly on the HTML element.

This example shows how text in the color rgb(239, 220, 220) looks like.

```
.text, #text, p{  
    color:rgb(239, 220, 220)  
}
```

If you want to add a text shadow in that color use the text-shadow property, you can generate a text shadow directly with our [CSS Text Shadow Generator](#).

Here you see how black text with a 4 pixel rgb(239, 220, 220) colored shadow looks like.

```
.shadow{ text-shadow: 4px 4px 2px rgb(239, 220, 220) }
```

Border

The CSS property to change the border of an element to XYZ 74.1081, 74.7044, 78.2236 is called "border". The border property can be set on classes, ids or directly on the HTML element.

This example shows the color as border, it can be applied via the CSS property "border" or "border-color".

```
.border, #border, table{ border:4px solid rgb(239, 220, 220) }
```


If only the border color should be changed use the property `border-color`.

```
.border{ border-color:rgb(239, 220, 220) }
```

If you want to add a box shadow in that color use:

Here you see how a box with a 4 pixel `rgb(239, 220, 220)` colored shadow looks like.

```
.boxshadow{ -moz-box-shadow:4px 4px 4px  
4px rgb(239, 220, 220); -webkit-box-  
shadow:4px 4px 4px 4px rgb(239, 220, 220);  
box-shadow:4px 4px 4px 4px rgb(239, 220,  
220) }
```

Background

The CSS property to change the background color of an element to XYZ 74.1081, 74.7044, 78.2236 is called "background". The background property can be set on classes, ids or directly on the HTML element.

```
.background, #background, body{  
background: rgb(239, 220, 220) }
```

If only the background color should be changed can be used:

```
.background{ background-color: rgb(239,  
220, 220) }
```

This example shows the color as background, it is applied via the CSS property "background".

To optimize and compress your CSS code, you can use our [online CSS compressor and optimizer](#) based on csstidy. If you want to create a linear or radial gradient as background or border, check our [CSS Gradient Generator](#).

Hey! You found this booklet interesting? Support Converting Colors with the new Membership Option!

The pro membership hides all ads, plus gives you double the colors in the color bucket, and more awesome pro features!

[Learn more, Memberships starting at \\$2.50/m!](#)

**Follow me
on Twitter!**

@ConvertingColor