

Converting Colors

XYZ(74.1357, 74.5773, 77.2029)

Have a look what the booklet for
XYZ(74.1357, 74.5773, 77.2029)
contains.

XYZ(74.3146, 74.8261, 77.5439)	3
<i>Conversions</i>	4
<i>Details</i>	6
<i>Harmonies</i>	12
<i>Previews</i>	24
<i>Color Blindness Simulation</i>	28
<i>CSS Examples</i>	31

Color

**XYZ(74.3146, 74.8261,
77.5439)**

Conversions

Conversions Part 1

Format	Color
Hex	F0DCDB
RGB	240, 220, 219
RGB Percent	94%, 86%, 86%
CMY	0.0588, 0.1372, 0.1412
CMYK	0.00, 0.08, 0.09, 0.06
HSL	3°, 41%, 90%
HSV	3°, 9%, 94%
XYZ	74.3146, 74.8261, 77.5439
YIQ	225.8660, 12.2410, 3.9290

Conversions

Conversions Part 2

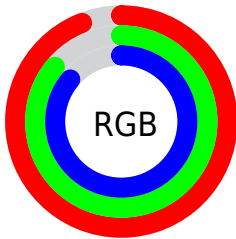
Format	Color
R _Y B	240, 220, 219
Decimal	15785179
CIE Lab	89.31, 6.70, 2.97
CIE LCh	89, 7.325, 23.894
Yxy	74.8261, 0.3278, 0.3301
Android (android.graphics.Color)	4293975259 (0xFFF0DCDB)
YUV	225.8660, -3.3849, 12.3955
Hunter-Lab	86.5021, 1.9721, 7.4015

Details

The XYZ color **74.3146, 74.8261, 77.5439** is a light color, and the websafe version is hex **CCCCCC**. A complement of this color would be **75.8080, 83.0831, 94.4803**, and the grayscale version is **72.2112, 75.9718, 82.7333**.

A 20% lighter version of the original color is **95.0500, 100.0000, 108.9000**, and **39.9231, 39.7810, 40.6963** is the 20% darker color. If you saturate the color by 10%, you get **65.7871, 62.4677, 60.2207**, and if you desaturate by 10%, it is **84.1217, 89.0130, 97.5429**.

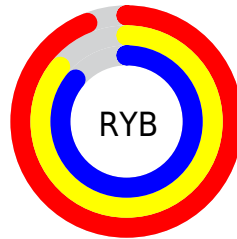
Distribution



Red (94%)

Green (86%)

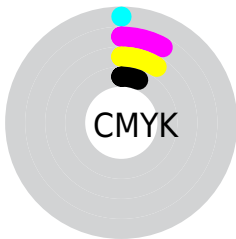
Blue (86%)



Red (94%)

Yellow (86%)

Blue (86%)

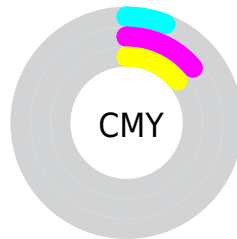


Cyan (0%)

Magenta (8%)

Yellow (9%)

Black (6%)



Cyan (6%)

Magenta (14%)

Yellow (14%)

Brightness & Saturation Gradients

These gradients show how the XYZ color 74.3146, 74.8261, 77.5439 changes by changing the brightness by 10 percent. The first figure shows a shift by +10% for each color and the second figure -10%.

Similar to the brightness gradients but the following saturation gradients show a change of the XYZ color 74.3146, 74.8261, 77.5439 by changing the saturation by 10% instead.

74.3146, 74.8261,
77.5439

74.3146, 74.8261,
77.5439

464.5920,
477.3196, 506.1033

55.3438, 55.4704,
57.1852

124.3348,
126.0662, 131.6870

39.9119, 39.7785,
40.7436

156.1148,
158.7194, 166.3084

27.6538, 27.3659,
27.8006

192.8953,
196.5739, 206.5211

18.2040, 17.8482,
17.9377

235.0416,
240.0140, 252.7437

11.1971, 10.8411,
10.7363

282.9191,
289.4243, 305.3947

6.2678, 5.9601,
5.7778

336.8931,

3.0508, 2.8208,

345.1891, 364.8926

2.6439

397.3289,
407.6927, 431.6559

■ 1.1807, 1.0389,
0.9150

■ 0.0910, 0.0000,
0.0000

■ 74.3146, 74.8261,
77.5439

■ 74.3146, 74.8261,
77.5439

■ 65.7871, 62.4677,
60.2207

■ 84.1217, 89.0130,
97.5429

■ 58.4806, 51.8541,
45.4553

■ 89.7456, 97.2655,
108.6518

■ 52.3410, 42.9097,
33.1280

■ 47.3079, 35.5496,
23.1076

■ 43.3153, 29.6814,
15.2507

■ 40.2905, 25.2032,
9.3979

■ 38.1510, 22.0001,
5.3677

■ 36.8008, 19.9393,
2.9460

■ 36.1136, 18.8552,
1.8222

Harmonies

Analogous

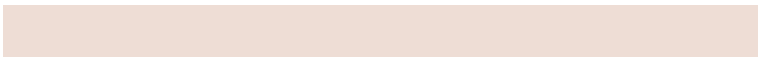
The Analogous color harmony consists of three colors that are next to each other on the color wheel.



74.5987, 74.8261, 82.5263



74.3146, 74.8261, 77.5439



73.1683, 74.8261, 73.7632

Triad

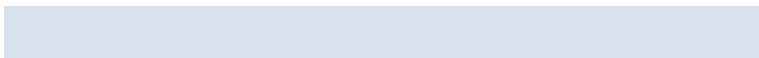
The Triadic color harmony groups three colors that are evenly spaced from another and form a triangle on the color wheel.



74.3146, 74.8261, 77.5439



68.3744, 74.8261, 75.7992



70.7543, 74.8261, 91.6761

Complementary

The Complementary color scheme is a pair of colors which are on the opposite of each other on the color wheel.



74.3146, 74.8261, 77.5439



75.8080, 83.0831, 94.4803

Split Complementary

Split-complementary colors differ from the complementary color scheme. The scheme consists of three colors, the original color and two neighbors of the complement color.



69.1103, 74.8261, 89.7020



74.3146, 74.8261, 77.5439



67.7511, 74.8261, 80.4285

Square

The Square scheme is like the rectangle color scheme, but the four colors are evenly spaced on the color wheel.



74.3146, 74.8261, 77.5439



69.7345, 74.8261, 72.7858



68.0182, 74.8261, 85.5324



72.5237, 74.8261, 90.8251

Rectangle

The Rectangle color scheme consists of four colors that form a rectangle on the color wheel.



74.3146, 74.8261, 77.5439



72.0794, 74.8261, 72.3618



68.0182, 74.8261, 85.5324



70.1691, 74.8261, 91.3184

Sweetspot

The Sweet Spot groups the original color and five complimentary colors.



74.3167, 74.8294, 77.5455



91.5627, 94.9572, 101.7818



76.8921, 75.4392, 92.4035



19.4036, 20.0433, 21.3886



0.0000, 0.0000, 0.0000



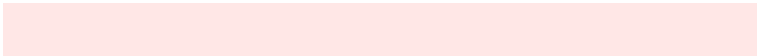
20.3446, 21.4041, 23.3091

Same Dimension

The Same Dimension uses a secret algorithm to generate beautiful new colors.



74.3167, 74.8294, 77.5455



83.9502, 83.9399, 86.2727



77.0749, 80.3459, 78.4649



15.8334, 15.8799, 16.3803



19.7668, 10.3316, 0.9524



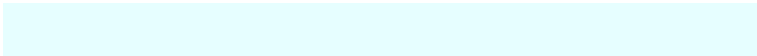
1.6656, 0.9019, 0.0863

Inverse Universe

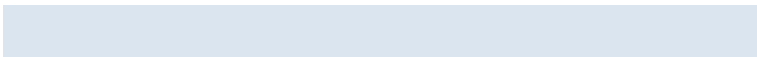
The Inverse Universe completely reimagines the original color for something new.



75.8080, 83.0831, 94.4803



85.8952, 94.7049, 108.3605



72.9067, 77.2805, 93.5132



16.1788, 17.7918, 20.3030



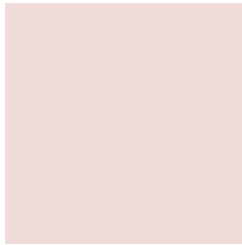
23.9051, 34.0345, 50.4373



2.0085, 2.8710, 4.2025

Previews

White Background



This preview shows how the XYZ color 74.3146, 74.8261, 77.5439 looks on a white background.

Color Contrast Check

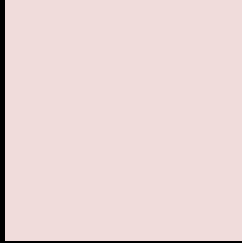
Large Text (above 18pt) WCAG AA × Fail

Any Text WCAG AA × Fail

Large Text (above 18pt) WCAG AAA × Fail

Any Text WCAG AAA × Fail

Black Background



This preview shows how the XYZ color 74.3146, 74.8261, 77.5439 looks on a black background.

Color Contrast Check

Large Text (above 18pt) WCAG AA ✓ Pass

Any Text WCAG AA ✓ Pass

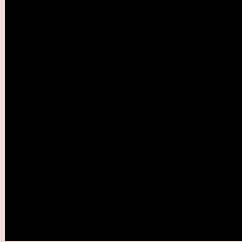
Large Text (above 18pt) WCAG AAA ✓ Pass

Any Text WCAG AAA ✓ Pass

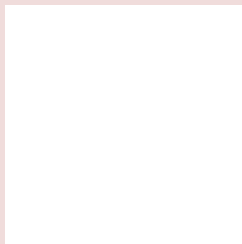
If you want to check with other color combinations, try the [Color Contrast Checker](#).

XYZ 74.3146, 74.8261, 77.5439

Background



This preview shows how black text looks on a background with the XYZ color 74.3146, 74.8261, 77.5439.

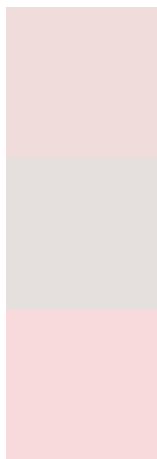


This preview shows how white text looks on a background with the XYZ color 74.3146, 74.8261,

Color Blindness Simulation

Color vision deficiency is a very complex topic, and I could not describe the different causes any better than Wikipedia does, so if you want to learn more, you should check out their [article about color blindness](#).

Dichromacy



Original Color

74.3146, 74.8261, 77.5439

Protanopia

71.7519, 74.6538, 79.0345

Deuteranopia

76.4425, 74.7495, 78.1093



Tritanopia

76.6847, 75.0182, 89.0355

Trichromacy



Original Color

74.3146, 74.8261, 77.5439

Protanomaly

72.6438, 74.7335, 78.3064

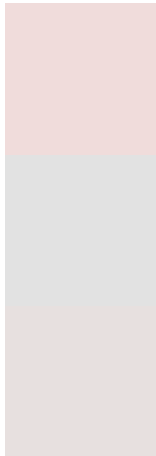
Deuteranomaly

75.6459, 74.7226, 78.1461

Tritanomaly

75.7500, 75.0210, 84.6168

Monochromacy



Original Color

74.3146, 74.8261, 77.5439

Achromatopsia

72.2879, 76.0525, 82.8211

Achromatomaly

72.9299, 75.6279, 80.5659

CSS Examples

Text

The CSS property to change the color of the text to XYZ 74.3146, 74.8261, 77.5439 is called "color". The color property can be set on classes, ids or directly on the HTML element.

This example shows how text in the color rgb(240, 220, 219) looks like.

```
.text, #text, p{  
    color:rgb(240, 220, 219)  
}
```

If you want to add a text shadow in that color use the text-shadow property, you can generate a text shadow directly with our [CSS Text Shadow Generator](#).

Here you see how black text with a 4 pixel rgb(240, 220, 219) colored shadow looks like.

```
.shadow{ text-shadow: 4px 4px 2px rgb(240, 220, 219) }
```

Border

The CSS property to change the border of an element to XYZ 74.3146, 74.8261, 77.5439 is called "border". The border property can be set on classes, ids or directly on the HTML element.

This example shows the color as border, it can be applied via the CSS property "border" or "border-color".

```
.border, #border, table{ border:4px solid rgb(240, 220, 219) }
```


If only the border color should be changed use the property `border-color`.

```
.border{ border-color:rgb(240, 220, 219) }
```

If you want to add a box shadow in that color use:

Here you see how a box with a 4 pixel `rgb(240, 220, 219)` colored shadow looks like.

```
.boxshadow{ -moz-box-shadow:4px 4px 4px  
4px rgb(240, 220, 219); -webkit-box-  
shadow:4px 4px 4px 4px rgb(240, 220, 219);  
box-shadow:4px 4px 4px 4px rgb(240, 220,  
219) }
```

Background

The CSS property to change the background color of an element to XYZ 74.3146, 74.8261, 77.5439 is called "background". The background property can be set on classes, ids or directly on the HTML element.

```
.background, #background, body{  
background: rgb(240, 220, 219) }
```

If only the background color should be changed can be used:

```
.background{ background-color: rgb(240,  
220, 219) }
```

This example shows the color as background, it is applied via the CSS property "background".

To optimize and compress your CSS code, you can use our [online CSS compressor and optimizer](#) based on csstidy. If you want to create a linear or radial gradient as background or border, check our [CSS Gradient Generator](#).

Hey! You found this booklet interesting? Support Converting Colors with the new Membership Option!

The pro membership hides all ads, plus gives you double the colors in the color bucket, and more awesome pro features!

[Learn more, Memberships starting at \\$2.50/m!](#)

**Follow me
on Twitter!**

@ConvertingColor