

Converting Colors

XYZ(74.1397, 74.0753, 77.5725)

Have a look what the booklet for
XYZ(74.1397, 74.0753, 77.5725)
contains.

XYZ(74.1332, 73.9581, 77.3859)	3
<i>Conversions</i>	4
<i>Details</i>	6
<i>Harmonies</i>	12
<i>Previews</i>	24
<i>Color Blindness Simulation</i>	28
<i>CSS Examples</i>	31

Color

**XYZ(74.1332, 73.9581,
77.3859)**

Conversions

Conversions Part 1

Format	Color
Hex	F1DADB
RGB	241, 218, 219
RGB Percent	95%, 85%, 86%
CMY	0.0549, 0.1451, 0.1412
CMYK	0.00, 0.10, 0.09, 0.05
HSL	357°, 45%, 90%
HSV	357°, 10%, 95%
XYZ	74.1332, 73.9581, 77.3859
YIQ	224.9910, 13.3870, 5.1870

Conversions

Conversions Part 2

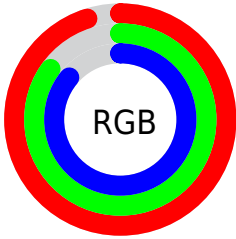
Format	Color
R _Y B	241, 218, 219
Decimal	15850203
CIE Lab	88.90, 8.08, 2.38
CIE LCh	89, 8.428, 16.427
Yxy	73.9581, 0.3288, 0.3280
Android (android.graphics.Color)	4294040283 (0xFFF1DADB)
YUV	224.9910, -2.9536, 14.0399
Hunter-Lab	85.9989, 3.3734, 6.8473

Details

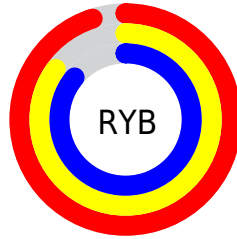
The XYZ color **74.1332, 73.9581, 77.3859** is a light color, and the websafe version is hex **CCCCCC**. A complement of this color would be **76.0998, 84.1091, 94.6661**, and the grayscale version is **71.5772, 75.3048, 82.0069**.

A 20% lighter version of the original color is **95.0500, 100.0000, 108.9000**, and **39.8056, 39.1890, 40.5882** is the 20% darker color. If you saturate the color by 10%, you get **65.5043, 61.2256, 60.5569**, and if you desaturate by 10%, it is **84.0954, 88.6826, 96.7354**.

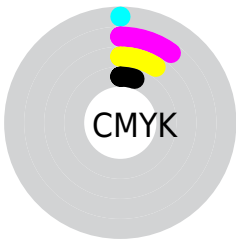
Distribution



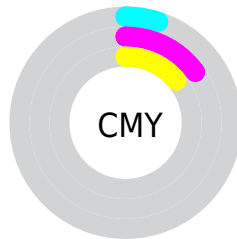
- Red (95%)
- Green (85%)
- Blue (86%)



- Red (95%)
- Yellow (85%)
- Blue (86%)



- Cyan (0%)
- Magenta (10%)
- Yellow (9%)
- Black (5%)



- Cyan (5%)
- Magenta (15%)
- Yellow (14%)

Brightness & Saturation Gradients

These gradients show how the XYZ color 74.1332, 73.9581, 77.3859 changes by changing the brightness by 10 percent. The first figure shows a shift by +10% for each color and the second figure -10%.

Similar to the brightness gradients but the following saturation gradients show a change of the XYZ color 74.1332, 73.9581, 77.3859 by changing the saturation by 10% instead.

74.1332, 73.9581,
77.3859

74.1332, 73.9581,
77.3859

463.9762,
474.3287, 505.5513

55.1947, 54.7597,
57.0562

124.0791,
124.8364, 131.4621

39.7921, 39.2094,
40.6407

155.8172,
157.2852, 166.0456

27.5600, 26.9227,
27.7209

192.5526,
194.9195, 206.2175

18.1330, 17.5152,
17.8781

234.6507,
238.1238, 252.3963

11.1458, 10.6025,
10.6940

282.4767,
287.2825, 305.0005

6.2330, 5.8002,
5.7499

336.3960,

3.0293, 2.7240,

342.7799, 364.4488

2.6273

396.7741,
405.0006, 431.1595

■ 1.1693, 0.9894,
0.9065

■ 0.0819, 0.0000,
0.0000

■ 74.1332, 73.9581,
77.3859

■ 74.1332, 73.9581,
77.3859

■ 65.5043, 61.2256,
60.5569

■ 84.0954, 88.6826,
96.7354

■ 58.1463, 50.3904,
46.1401

■ 90.0860, 97.4409,
108.6677

■ 52.0010, 41.3646,
34.0265

■ 47.0033, 34.0498,
24.0967

■ 43.0819, 28.3378,
16.2209

■ 40.1578, 24.1085,
10.2551

■ 38.1408, 21.2247,
6.0370

■ 36.9247, 19.5237,
3.3775

■ 36.3512, 18.7502,
2.0350

Harmonies

Analogous

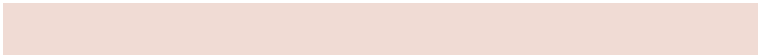
The Analogous color harmony consists of three colors that are next to each other on the color wheel.



74.1857, 73.9581, 83.1988



74.1332, 73.9581, 77.3859



73.0394, 73.9581, 72.6438

Triad

The Triadic color harmony groups three colors that are evenly spaced from another and form a triangle on the color wheel.



74.1332, 73.9581, 77.3859



67.4853, 73.9581, 73.0147



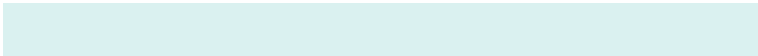
69.3765, 73.9581, 91.9744

Complementary

The Complementary color scheme is a pair of colors which are on the opposite of each other on the color wheel.



74.1332, 73.9581, 77.3859



76.0998, 84.1091, 94.6661

Split Complementary

Split-complementary colors differ from the complementary color scheme. The scheme consists of three colors, the original color and two neighbors of the complement color.



67.6202, 73.9581, 88.9625



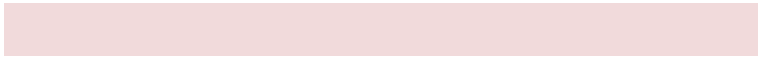
74.1332, 73.9581, 77.3859



66.5427, 73.9581, 77.9146

Square

The Square scheme is like the rectangle color scheme, but the four colors are evenly spaced on the color wheel.



74.1332, 73.9581, 77.3859



69.1892, 73.9581, 70.2050



66.5915, 73.9581, 83.7536



71.4125, 73.9581, 91.8159

Rectangle

The Rectangle color scheme consists of four colors that form a rectangle on the color wheel.



74.1332, 73.9581, 77.3859



71.8787, 73.9581, 70.6439



66.5915, 73.9581, 83.7536



68.7346, 73.9581, 91.2931

Sweetspot

The Sweet Spot groups the original color and five complimentary colors.



74.1353, 73.9614, 77.3875



91.5017, 94.7533, 102.0144



76.8349, 74.9960, 93.6459



19.3873, 19.9886, 21.4510



0.0000, 0.0000, 0.0000



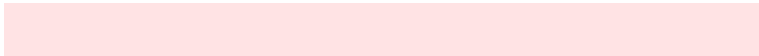
20.3446, 21.4041, 23.3091

Same Dimension

The Same Dimension uses a secret algorithm to generate beautiful new colors.



74.1353, 73.9614, 77.3875



82.7218, 81.7814, 84.9440



76.7724, 79.4448, 77.6218



15.8005, 15.7699, 16.5058



19.7150, 10.1584, 1.1499



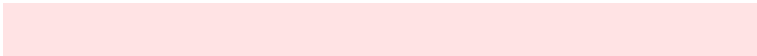
1.6498, 0.8490, 0.1467

Inverse Universe

The Inverse Universe completely reimagines the original color for something new.



74.1353, 73.9614, 77.3875



82.7218, 81.7814, 84.9440



73.2715, 78.2151, 94.4551



15.8005, 15.7699, 16.5058



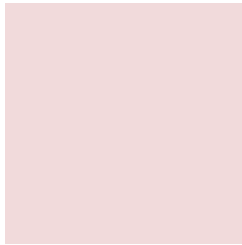
19.7150, 10.1584, 1.1499



1.6498, 0.8490, 0.1467

Previews

White Background



This preview shows how the XYZ color 74.1332, 73.9581, 77.3859 looks on a white background.

Color Contrast Check

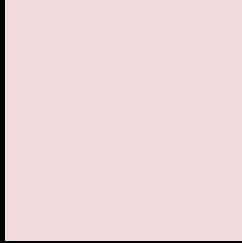
Large Text (above 18pt) WCAG AA × Fail

Any Text WCAG AA × Fail

Large Text (above 18pt) WCAG AAA × Fail

Any Text WCAG AAA × Fail

Black Background



This preview shows how the XYZ color 74.1332, 73.9581, 77.3859 looks on a black background.

Color Contrast Check

Large Text (above 18pt) WCAG AA ✓ Pass

Any Text WCAG AA ✓ Pass

Large Text (above 18pt) WCAG AAA ✓ Pass

Any Text WCAG AAA ✓ Pass

If you want to check with other color combinations, try the [Color Contrast Checker](#).

XYZ 74.1332, 73.9581, 77.3859

Background



This preview shows how black text looks on a background with the XYZ color 74.1332, 73.9581, 77.3859.



This preview shows how white text looks on a background with the XYZ color 74.1332, 73.9581,

Color Blindness Simulation

Color vision deficiency is a very complex topic, and I could not describe the different causes any better than Wikipedia does, so if you want to learn more, you should check out their [article about color blindness](#).

Dichromacy



Original Color

74.1332, 73.9581, 77.3859

Protanopia

71.1673, 73.9570, 78.9308

Deuteranopia

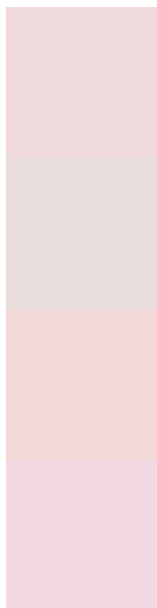
75.3481, 73.8190, 77.2951



Tritanopia

76.2260, 74.0496, 87.3663

Trichromacy



Original Color

74.1332, 73.9581, 77.3859

Protanomaly

72.3790, 74.2038, 78.2181

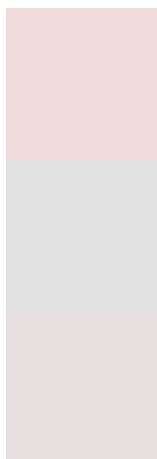
Deuteranomaly

74.9073, 73.9733, 77.3481

Tritanomaly

75.4344, 74.1044, 83.7265

Monochromacy



Original Color

74.1332, 73.9581, 77.3859

Achromatopsia

71.5672, 75.2942, 81.9954

Achromatomaly

72.3956, 74.5592, 80.3877

CSS Examples

Text

The CSS property to change the color of the text to XYZ 74.1332, 73.9581, 77.3859 is called "color". The color property can be set on classes, ids or directly on the HTML element.

This example shows how text in the color rgb(241, 218, 219) looks like.

```
.text, #text, p{  
    color:rgb(241, 218, 219)  
}
```

If you want to add a text shadow in that color use the text-shadow property, you can generate a text shadow directly with our [CSS Text Shadow Generator](#).

Here you see how black text with a 4 pixel rgb(241, 218, 219) colored shadow looks like.

```
.shadow{ text-shadow: 4px 4px 2px rgb(241, 218, 219) }
```

Border

The CSS property to change the border of an element to XYZ 74.1332, 73.9581, 77.3859 is called "border". The border property can be set on classes, ids or directly on the HTML element.

This example shows the color as border, it can be applied via the CSS property "border" or "border-color".

```
.border, #border, table{ border:4px solid rgb(241, 218, 219) }
```


If only the border color should be changed use the property `border-color`.

```
.border{ border-color:rgb(241, 218, 219) }
```

If you want to add a box shadow in that color use:

Here you see how a box with a 4 pixel `rgb(241, 218, 219)` colored shadow looks like.

```
.boxshadow{ -moz-box-shadow:4px 4px 4px  
4px rgb(241, 218, 219); -webkit-box-  
shadow:4px 4px 4px 4px rgb(241, 218, 219);  
box-shadow:4px 4px 4px 4px rgb(241, 218,  
219) }
```

Background

The CSS property to change the background color of an element to XYZ 74.1332, 73.9581, 77.3859 is called "background". The background property can be set on classes, ids or directly on the HTML element.

```
.background, #background, body{  
background: rgb(241, 218, 219) }
```

If only the background color should be changed can be used:

```
.background{ background-color: rgb(241,  
218, 219) }
```

This example shows the color as background, it is applied via the CSS property "background".

To optimize and compress your CSS code, you can use our [online CSS compressor and optimizer](#) based on csstidy. If you want to create a linear or radial gradient as background or border, check our [CSS Gradient Generator](#).

Hey! You found this booklet interesting? Support Converting Colors with the new Membership Option!

The pro membership hides all ads, plus gives you double the colors in the color bucket, and more awesome pro features!

[Learn more, Memberships starting at \\$2.50/m!](#)

**Follow me
on Twitter!**

@ConvertingColor