

Converting Colors

XYZ(74.2583, 74.7644, 83.6285)

Have a look what the booklet for
XYZ(74.2583, 74.7644, 83.6285)
contains.

XYZ(74.1889, 74.6207, 83.8919)	3
<i>Conversions</i>	4
<i>Details</i>	6
<i>Harmonies</i>	12
<i>Previews</i>	24
<i>Color Blindness Simulation</i>	28
<i>CSS Examples</i>	31

Color

**XYZ(74.1889, 74.6207,
83.8919)**

Conversions

Conversions Part 1

Format	Color
Hex	ECDCE4
RGB	236, 220, 228
RGB Percent	93%, 86%, 89%
CMY	0.0745, 0.1372, 0.1059
CMYK	0.00, 0.07, 0.03, 0.07
HSL	330°, 30%, 89%
HSV	330°, 7%, 93%
XYZ	74.1889, 74.6207, 83.8919
YIQ	225.6960, 6.9680, 5.8800

Conversions

Conversions Part 2

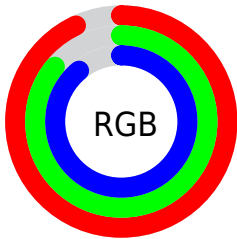
Format	Color
R _Y B	236, 220, 228
Decimal	15523044
CIE Lab	89.22, 6.85, -1.95
CIE LCh	89, 7.124, 344.150
Yxy	74.6207, 0.3188, 0.3207
Android (android.graphics.Color)	4293713124 (0xFFECDCE4)
YUV	225.6960, 1.1359, 9.0366
Hunter-Lab	86.3833, 2.1312, 2.8883

Details

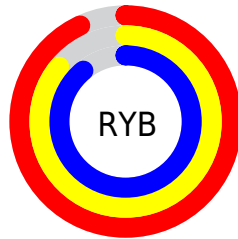
The XYZ color **74.1889, 74.6207, 83.8919** is a light color, and the websafe version is hex **CCCCCC**. A complement of this color would be **73.5171, 80.8100, 85.1259**, and the grayscale version is **72.0596, 75.8123, 82.5596**.

A 20% lighter version of the original color is **95.0500, 100.0000, 108.9000**, and **39.8203, 39.6307, 45.0859** is the 20% darker color. If you saturate the color by 10%, you get **66.8444, 62.4643, 73.6342**, and if you desaturate by 10%, it is **82.5239, 88.5771, 95.0335**.

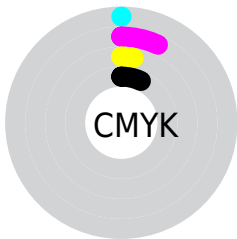
Distribution



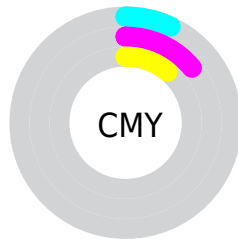
- Red (93%)
- Green (86%)
- Blue (89%)



- Red (93%)
- Yellow (86%)
- Blue (89%)



- Cyan (0%)
- Magenta (7%)
- Yellow (3%)
- Black (7%)





- Cyan (7%)
- Magenta (14%)
- Yellow (11%)

Brightness & Saturation Gradients

These gradients show how the XYZ color 74.1889, 74.6207, 83.8919 changes by changing the brightness by 10 percent. The first figure shows a shift by +10% for each color and the second figure -10%.

Similar to the brightness gradients but the following saturation gradients show a change of the XYZ color 74.1889, 74.6207, 83.8919 by changing the saturation by 10% instead.


 74.1889, 74.6207,
83.8919

 74.1889, 74.6207,
83.8919

464.1653,
476.6129, 528.0029

 55.2405, 55.3022,
62.3813

124.1576,
125.7753, 140.6843

 39.8289, 39.6437,
44.9031


155.9086,
158.3802, 176.8033

 27.5888, 27.2609,
31.0387


192.6579,
196.1827, 218.6287

 18.1548, 17.7692,
20.3696

234.7707,
239.5672, 266.5792

 11.1615, 10.7844,
12.4773

282.6126,
288.9180, 321.0734

 6.2437, 5.9221,
6.9431

336.5487,

 3.0359, 2.7978,

344.6197, 382.5297

3.3486

396.9445,
407.0565, 451.3666

■ 1.1728, 1.0271,
1.2753

■ 0.0847, 0.0000,
0.0414

■ 74.1889, 74.6207,
83.8919

■ 74.1889, 74.6207,
83.8919

■ 66.8444, 62.4643,
73.6342

■ 82.5239, 88.5771,
95.0335

■ 60.4454, 52.0243,
64.2318

■ 87.8611, 96.3565,
105.7375

■ 54.9528, 43.2251,
55.6612

■ 88.4026, 96.5731,
108.5889

■ 50.3219, 35.9816,
47.8960

■ 46.5046, 30.2009,
40.9080

■ 43.4473, 25.7802,
34.6669

■ 41.0898, 22.6031,
29.1396

■ 39.3616, 20.5333,
24.2891

■ 38.1740, 19.3978,
20.0716

Harmonies

Analogous

The Analogous color harmony consists of three colors that are next to each other on the color wheel.



73.2784, 74.6207, 88.3131



74.1889, 74.6207, 83.8919



74.2154, 74.6207, 78.9316

Triad

The Triadic color harmony groups three colors that are evenly spaced from another and form a triangle on the color wheel.



74.1889, 74.6207, 83.8919



70.1108, 74.6207, 72.3162



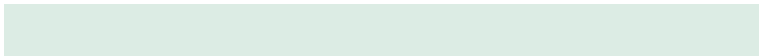
68.5534, 74.6207, 88.1008

Complementary

The Complementary color scheme is a pair of colors which are on the opposite of each other on the color wheel.



74.1889, 74.6207, 83.8919



73.5171, 80.8100, 85.1259

Split Complementary

Split-complementary colors differ from the complementary color scheme. The scheme consists of three colors, the original color and two neighbors of the complement color.



67.7328, 74.6207, 83.6118



74.1889, 74.6207, 83.8919



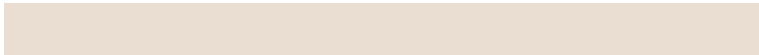
68.6220, 74.6207, 74.5725

Square

The Square scheme is like the rectangle color scheme, but the four colors are evenly spaced on the color wheel.



74.1889, 74.6207, 83.8919



71.8416, 74.6207, 72.3843



67.7578, 74.6207, 78.6627



70.0157, 74.6207, 90.8100

Rectangle

The Rectangle color scheme consists of four colors that form a rectangle on the color wheel.



74.1889, 74.6207, 83.8919



73.7270, 74.6207, 75.9933



67.7578, 74.6207, 78.6627



68.1944, 74.6207, 86.7421

Sweetspot

The Sweet Spot groups the original color and five complimentary colors.



74.1910, 74.6239, 83.8935



93.0365, 96.6259, 106.2164



72.7312, 73.7401, 89.7579



19.9348, 20.7173, 22.7629



0.0000, 0.0000, 0.0000



20.3446, 21.4041, 23.3091

Same Dimension

The Same Dimension uses a secret algorithm to generate beautiful new colors.



74.1910, 74.6239, 83.8935



87.2845, 87.0281, 98.4220



73.1062, 74.1900, 78.1810



15.3795, 15.1797, 17.2838



20.9347, 10.5766, 10.7236



1.6924, 0.8499, 1.0978

Inverse Universe

The Inverse Universe completely reimagines the original color for something new.



74.1910, 74.6239, 83.8935



87.2845, 87.0281, 98.4220



74.6533, 81.2645, 91.1090



15.3795, 15.1797, 17.2838



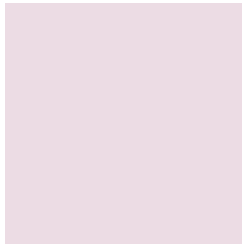
20.9347, 10.5766, 10.7236



1.6924, 0.8499, 1.0978

Previews

White Background



This preview shows how the XYZ color 74.1889, 74.6207, 83.8919 looks on a white background.

Color Contrast Check

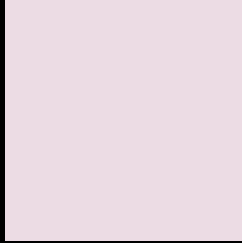
Large Text (above 18pt) WCAG AA × Fail

Any Text WCAG AA × Fail

Large Text (above 18pt) WCAG AAA × Fail

Any Text WCAG AAA × Fail

Black Background



This preview shows how the XYZ color 74.1889, 74.6207, 83.8919 looks on a black background.

Color Contrast Check

Large Text (above 18pt) WCAG AA ✓ Pass

Any Text WCAG AA ✓ Pass

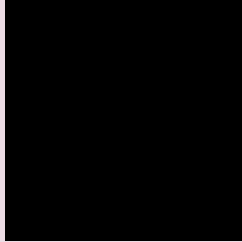
Large Text (above 18pt) WCAG AAA ✓ Pass

Any Text WCAG AAA ✓ Pass

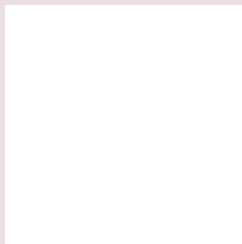
If you want to check with other color combinations, try the [Color Contrast Checker](#).

XYZ 74.1889, 74.6207, 83.8919

Background



This preview shows how black text looks on a background with the XYZ color 74.1889, 74.6207, 83.8919.

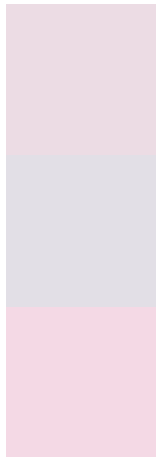


This preview shows how white text looks on a background with the XYZ color 74.1889, 74.6207,

Color Blindness Simulation

Color vision deficiency is a very complex topic, and I could not describe the different causes any better than Wikipedia does, so if you want to learn more, you should check out their [article about color blindness](#).

Dichromacy



Original Color

74.1889, 74.6207, 83.8919

Protanopia

72.0346, 74.6573, 85.4766

Deuteranopia

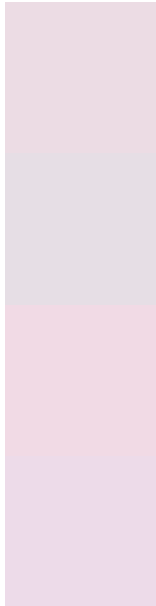
76.2639, 74.5159, 84.4922



Tritanopia

75.3969, 74.7237, 89.8062

Trichromacy



Original Color

74.1889, 74.6207, 83.8919

Protanomaly

72.8973, 74.7227, 84.7096

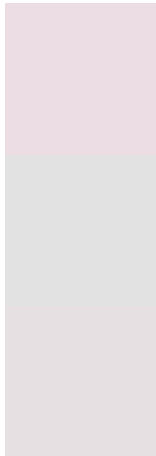
Deuteranomaly

75.4899, 74.5007, 84.5301

Tritanomaly

74.9646, 74.5508, 87.5295

Monochromacy



Original Color

74.1889, 74.6207, 83.8919

Achromatopsia

72.2879, 76.0525, 82.8211

Achromatomaly

73.1539, 75.6804, 83.4252

CSS Examples

Text

The CSS property to change the color of the text to XYZ 74.1889, 74.6207, 83.8919 is called "color". The color property can be set on classes, ids or directly on the HTML element.

This example shows how text in the color rgb(236, 220, 228) looks like.

```
.text, #text, p{  
    color:rgb(236, 220, 228)  
}
```

If you want to add a text shadow in that color use the text-shadow property, you can generate a text shadow directly with our [CSS Text Shadow Generator](#).

Here you see how black text with a 4 pixel rgb(236, 220, 228) colored shadow looks like.

```
.shadow{ text-shadow: 4px 4px 2px rgb(236, 220, 228) }
```

Border

The CSS property to change the border of an element to XYZ 74.1889, 74.6207, 83.8919 is called "border". The border property can be set on classes, ids or directly on the HTML element.

This example shows the color as border, it can be applied via the CSS property "border" or "border-color".

```
.border, #border, table{ border:4px solid rgb(236, 220, 228) }
```


If only the border color should be changed use the property `border-color`.

```
.border{ border-color:rgb(236, 220, 228) }
```

If you want to add a box shadow in that color use:

Here you see how a box with a 4 pixel `rgb(236, 220, 228)` colored shadow looks like.

```
.boxshadow{ -moz-box-shadow:4px 4px 4px  
4px rgb(236, 220, 228); -webkit-box-  
shadow:4px 4px 4px 4px rgb(236, 220, 228);  
box-shadow:4px 4px 4px 4px rgb(236, 220,  
228) }
```

Background

The CSS property to change the background color of an element to XYZ 74.1889, 74.6207, 83.8919 is called "background". The background property can be set on classes, ids or directly on the HTML element.

```
.background, #background, body{  
background: rgb(236, 220, 228) }
```

If only the background color should be changed can be used:

```
.background{ background-color: rgb(236,  
220, 228) }
```

This example shows the color as background, it is applied via the CSS property "background".

To optimize and compress your CSS code, you can use our [online CSS compressor and optimizer](#) based on csstidy. If you want to create a linear or radial gradient as background or border, check our [CSS Gradient Generator](#).

Hey! You found this booklet interesting? Support Converting Colors with the new Membership Option!

The pro membership hides all ads, plus gives you double the colors in the color bucket, and more awesome pro features!

[Learn more, Memberships starting at \\$2.50/m!](#)

**Follow me
on Twitter!**

@ConvertingColor