

Converting Colors

XYZ(74.2641, 75.2617, 79.6353)

Have a look what the booklet for
XYZ(74.2641, 75.2617, 79.6353)
contains.

XYZ(74.3012, 75.1640, 79.6992)	3
<i>Conversions</i>	4
<i>Details</i>	6
<i>Harmonies</i>	12
<i>Previews</i>	24
<i>Color Blindness Simulation</i>	28
<i>CSS Examples</i>	31

Color

**XYZ(74.3012, 75.1640,
79.6992)**

Conversions

Conversions Part 1

Format	Color
Hex	EEDDDE
RGB	238, 221, 222
RGB Percent	93%, 87%, 87%
CMY	0.0667, 0.1333, 0.1294
CMYK	0.00, 0.07, 0.07, 0.07
HSL	356°, 33%, 90%
HSV	356°, 7%, 93%
XYZ	74.3012, 75.1640, 79.6992
YIQ	226.1970, 9.8110, 3.9150

Conversions

Conversions Part 2

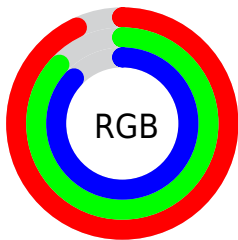
Format	Color
R _Y B	238, 221, 222
Decimal	15654366
CIE Lab	89.47, 5.99, 1.60
CIE LCh	89, 6.198, 14.963
Yxy	75.1640, 0.3242, 0.3280
Android (android.graphics.Color)	4293844446 (0xFFEEDDDE)
YUV	226.1970, -2.0691, 10.3512
Hunter-Lab	86.6972, 1.2580, 6.1838

Details

The XYZ color **74.3012, 75.1640, 79.6992** is a light color, and the websafe version is hex **CCCCCC**. A complement of this color would be **75.6823, 82.6376, 92.0868**, and the grayscale version is **72.4426, 76.2152, 82.9984**.

A 20% lighter version of the original color is **95.0500, 100.0000, 108.9000**, and **39.9027, 40.0075, 42.1783** is the 20% darker color. If you saturate the color by 10%, you get **65.6514, 62.3546, 62.9717**, and if you desaturate by 10%, it is **84.2451, 89.9212, 98.8288**.

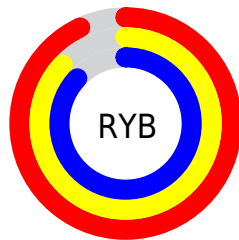
Distribution



Red (93%)

Green (87%)

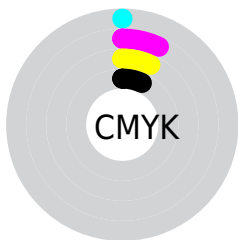
Blue (87%)



Red (93%)

Yellow (87%)

Blue (87%)

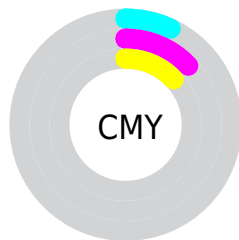


Cyan (0%)

Magenta (7%)

Yellow (7%)

Black (7%)



Cyan (7%)

Magenta (13%)

Yellow (13%)

Brightness & Saturation Gradients

These gradients show how the XYZ color 74.3012, 75.1640, 79.6992 changes by changing the brightness by 10 percent. The first figure shows a shift by +10% for each color and the second figure -10%.

Similar to the brightness gradients but the following saturation gradients show a change of the XYZ color 74.3012, 75.1640, 79.6992 by changing the saturation by 10% instead.

74.3012, 75.1640,
79.6992

74.3012, 75.1640,
79.6992

464.5465,
478.4811, 513.5985

55.3327, 55.7473,
58.9461

124.3159,
126.5445, 134.7503

39.9031, 40.0003,
42.1500

156.0929,
159.2770, 169.8855

27.6469, 27.5388,
28.8923

192.8700,
197.2169, 210.6517

18.1987, 17.9783,
18.7545

235.0128,
240.7486, 257.4676

11.1933, 10.9344,
11.3180

282.8864,
290.2565, 310.7517

6.2653, 6.0227,
6.1643

336.8564,

3.0492, 2.8589,

346.1249, 370.9225

2.8748

397.2880,
408.7383, 438.3986

■ 1.1798, 1.0585,
1.0311

■ 0.0904, 0.0000,
0.0000

■ 74.3012, 75.1640,
79.6992

■ 74.3012, 75.1640,
79.6992

■ 65.6514, 62.3546,
62.9717

■ 84.2451, 89.9212,
98.8288

■ 58.2366, 51.4022,
48.5466

■ 89.0703, 96.9174,
108.6202

■ 52.0021, 42.2236,
36.3247

■ 46.8871, 34.7256,
26.1975

■ 42.8252, 28.8063,
18.0472

■ 39.7429, 24.3527,
11.7447

■ 37.5573, 21.2371,
7.1453

■ 36.1717, 19.3095,
4.0828

■ 35.4636, 18.3769,
2.3562

Harmonies

Analogous

The Analogous color harmony consists of three colors that are next to each other on the color wheel.



74.3002, 75.1640, 84.0310



74.3012, 75.1640, 79.6992



73.5285, 75.1640, 76.0689

Triad

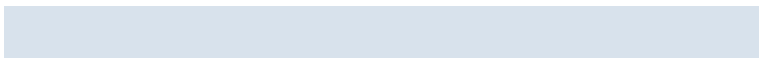
The Triadic color harmony groups three colors that are evenly spaced from another and form a triangle on the color wheel.



74.3012, 75.1640, 79.6992



69.3962, 75.1640, 76.0617



70.6858, 75.1640, 90.1911

Complementary

The Complementary color scheme is a pair of colors which are on the opposite of each other on the color wheel.



74.3012, 75.1640, 79.6992



75.6823, 82.6376, 92.0868

Split Complementary

Split-complementary colors differ from the complementary color scheme. The scheme consists of three colors, the original color and two neighbors of the complement color.



69.3937, 75.1640, 87.8975



74.3012, 75.1640, 79.6992



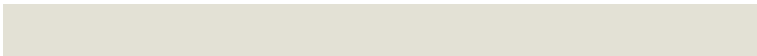
68.6564, 75.1640, 79.6890

Square

The Square scheme is like the rectangle color scheme, but the four colors are evenly spaced on the color wheel.



74.3012, 75.1640, 79.6992



70.6894, 75.1640, 74.0200



68.6554, 75.1640, 84.0205



72.1982, 75.1640, 90.1940

Rectangle

The Rectangle color scheme consists of four colors that form a rectangle on the color wheel.



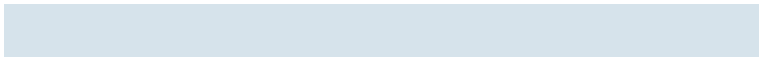
74.3012, 75.1640, 79.6992



72.6848, 75.1640, 74.4910



68.6554, 75.1640, 84.0205



70.2117, 75.1640, 89.6589

Sweetspot

The Sweet Spot groups the original color and five complimentary colors.



74.3033, 75.1673, 79.7008



92.6811, 96.4837, 104.3444



76.1719, 75.8709, 91.5198



19.8624, 20.6883, 22.3817



0.0000, 0.0000, 0.0000



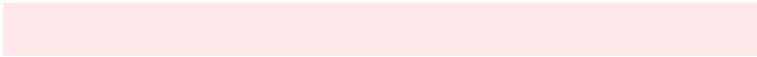
20.3446, 21.4041, 23.3091

Same Dimension

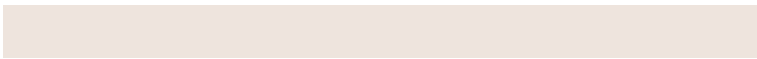
The Same Dimension uses a secret algorithm to generate beautiful new colors.



74.3033, 75.1673, 79.7008



84.8751, 84.9072, 89.3020



76.1577, 79.0890, 79.6624



15.8103, 15.7738, 16.5575



19.7305, 10.1646, 1.2313



1.6545, 0.8508, 0.1714

Inverse Universe

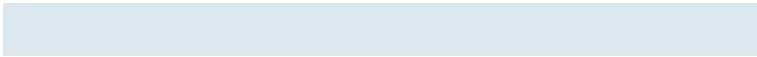
The Inverse Universe completely reimagines the original color for something new.



74.3033, 75.1673, 79.7008



84.8751, 84.9072, 89.3020



73.7276, 78.4948, 92.1551



15.8103, 15.7738, 16.5575



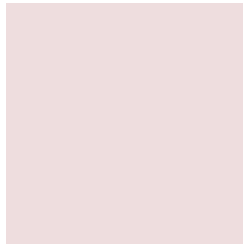
19.7305, 10.1646, 1.2313



1.6545, 0.8508, 0.1714

Previews

White Background



This preview shows how the XYZ color 74.3012, 75.1640, 79.6992 looks on a white background.

Color Contrast Check

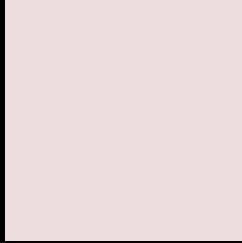
Large Text (above 18pt) WCAG AA × Fail

Any Text WCAG AA × Fail

Large Text (above 18pt) WCAG AAA × Fail

Any Text WCAG AAA × Fail

Black Background



This preview shows how the XYZ color 74.3012, 75.1640, 79.6992 looks on a black background.

Color Contrast Check

Large Text (above 18pt) WCAG AA ✓ Pass

Any Text WCAG AA ✓ Pass

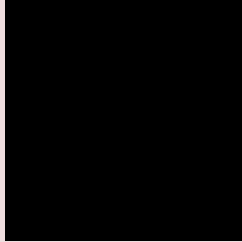
Large Text (above 18pt) WCAG AAA ✓ Pass

Any Text WCAG AAA ✓ Pass

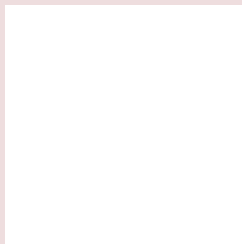
If you want to check with other color combinations, try the [Color Contrast Checker](#).

XYZ 74.3012, 75.1640, 79.6992

Background



This preview shows how black text looks on a background with the XYZ color 74.3012, 75.1640, 79.6992.

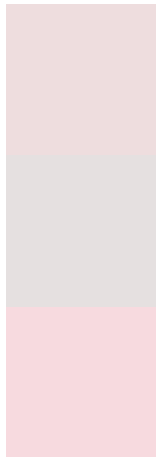


This preview shows how white text looks on a background with the XYZ color 74.3012, 75.1640,

Color Blindness Simulation

Color vision deficiency is a very complex topic, and I could not describe the different causes any better than Wikipedia does, so if you want to learn more, you should check out their [article about color blindness](#).

Dichromacy



Original Color

74.3012, 75.1640, 79.6992

Protanopia

72.4233, 75.3511, 81.2481

Deuteranopia

76.7485, 75.2447, 80.2906



Tritanopia

76.4070, 75.2444, 89.8534

Trichromacy



Original Color

74.3012, 75.1640, 79.6992

Protanomaly

72.9857, 75.2589, 80.4917

Deuteranomaly

75.9590, 75.2238, 80.3282

Tritanomaly

75.6136, 75.3066, 86.1517

Monochromacy



Original Color

74.3012, 75.1640, 79.6992

Achromatopsia

72.2879, 76.0525, 82.8211

Achromatomaly

72.8794, 75.5705, 81.9796

CSS Examples

Text

The CSS property to change the color of the text to XYZ 74.3012, 75.1640, 79.6992 is called "color". The color property can be set on classes, ids or directly on the HTML element.

This example shows how text in the color rgb(238, 221, 222) looks like.

```
.text, #text, p{  
    color:rgb(238, 221, 222)  
}
```

If you want to add a text shadow in that color use the text-shadow property, you can generate a text shadow directly with our [CSS Text Shadow Generator](#).

Here you see how black text with a 4 pixel rgb(238, 221, 222) colored shadow looks like.

```
.shadow{ text-shadow: 4px 4px 2px rgb(238, 221, 222) }
```

Border

The CSS property to change the border of an element to XYZ 74.3012, 75.1640, 79.6992 is called "border". The border property can be set on classes, ids or directly on the HTML element.

This example shows the color as border, it can be applied via the CSS property "border" or "border-color".

```
.border, #border, table{ border:4px solid rgb(238, 221, 222) }
```


If only the border color should be changed use the property `border-color`.

```
.border{ border-color:rgb(238, 221, 222) }
```

If you want to add a box shadow in that color use:

Here you see how a box with a 4 pixel `rgb(238, 221, 222)` colored shadow looks like.

```
.boxshadow{ -moz-box-shadow:4px 4px 4px  
4px rgb(238, 221, 222); -webkit-box-  
shadow:4px 4px 4px 4px rgb(238, 221, 222);  
box-shadow:4px 4px 4px 4px rgb(238, 221,  
222) }
```

Background

The CSS property to change the background color of an element to XYZ 74.3012, 75.1640, 79.6992 is called "background". The background property can be set on classes, ids or directly on the HTML element.

```
.background, #background, body{  
background: rgb(238, 221, 222) }
```

If only the background color should be changed can be used:

```
.background{ background-color: rgb(238,  
221, 222) }
```

This example shows the color as background, it is applied via the CSS property "background".

To optimize and compress your CSS code, you can use our [online CSS compressor and optimizer](#) based on csstidy. If you want to create a linear or radial gradient as background or border, check our [CSS Gradient Generator](#).

Hey! You found this booklet interesting? Support Converting Colors with the new Membership Option!

The pro membership hides all ads, plus gives you double the colors in the color bucket, and more awesome pro features!

[Learn more, Memberships starting at \\$2.50/m!](#)

**Follow me
on Twitter!**

@ConvertingColor