

Converting Colors

XYZ(74.3259, 76.0948, 80.8513)

Have a look what the booklet for
XYZ(74.3259, 76.0948, 80.8513)
contains.

XYZ(74.2990, 75.9359, 80.5532)	3
<i>Conversions</i>	4
<i>Details</i>	6
<i>Harmonies</i>	12
<i>Previews</i>	24
<i>Color Blindness Simulation</i>	28
<i>CSS Examples</i>	31

Color

**XYZ(74.2990, 75.9359,
80.5532)**

Conversions

Conversions Part 1

Format	Color
Hex	ECDFDF
RGB	236, 223, 223
RGB Percent	93%, 87%, 87%
CMY	0.0745, 0.1255, 0.1255
CMYK	0.00, 0.06, 0.06, 0.07
HSL	0°, 25%, 90%
HSV	0°, 6%, 93%
XYZ	74.2990, 75.9359, 80.5532
YIQ	226.8870, 7.7480, 2.7560

Conversions

Conversions Part 2

Format	Color
R _Y B	236, 223, 223
Decimal	15523807
CIE Lab	89.83, 4.43, 1.58
CIE LCh	90, 4.705, 19.611
Yxy	75.9359, 0.3219, 0.3290
Android (android.graphics.Color)	4293713887 (0xFFE0C0E0)
YUV	226.8870, -1.9163, 7.9921
Hunter-Lab	87.1412, -0.3031, 6.1913

Details

The XYZ color **74.2990, 75.9359, 80.5532** is a light color, and the websafe version is hex **CCCCCC**. A complement of this color would be **75.5671, 81.7337, 91.1512**, and the grayscale version is **72.9429, 76.7416, 83.5716**.

A 20% lighter version of the original color is **95.0500, 100.0000, 108.9000**, and **39.8929, 40.5357, 42.7674** is the 20% darker color. If you saturate the color by 10%, you get **65.4665, 63.0123, 62.9897**, and if you desaturate by 10%, it is **84.4577, 90.8001, 100.7486**.

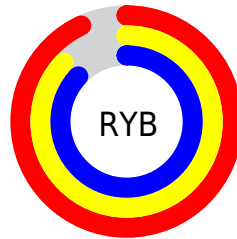
Distribution



Red (93%)

Green (87%)

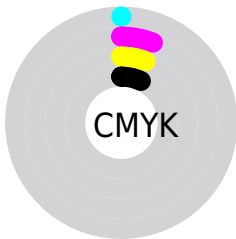
Blue (87%)



Red (93%)

Yellow (87%)

Blue (87%)

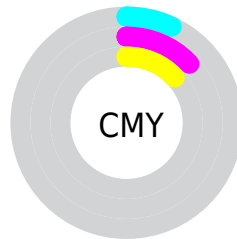


Cyan (0%)

Magenta (6%)

Yellow (6%)

Black (7%)



Cyan (7%)

Magenta (13%)

Yellow (13%)

Brightness & Saturation Gradients

These gradients show how the XYZ color 74.2990, 75.9359, 80.5532 changes by changing the brightness by 10 percent. The first figure shows a shift by +10% for each color and the second figure -10%.

Similar to the brightness gradients but the following saturation gradients show a change of the XYZ color 74.2990, 75.9359, 80.5532 by changing the saturation by 10% instead.

74.2990, 75.9359,
80.5532

74.2990, 75.9359,
80.5532

464.5391,
481.1282, 516.5510

55.3309, 56.3799,
59.6448

124.3128,
127.6363, 135.9616

39.9016, 40.5076,
42.7090

156.0892,
160.5495, 171.2988

27.6457, 27.9346,
29.3272

192.8659,
198.6840, 212.2827

18.1979, 18.2763,
19.0807

235.0080,
242.4240, 259.3317

11.1927, 11.1486,
11.5512

282.8811,
292.1541, 312.8646

6.2648, 6.1669,
6.3201

336.8503,

3.0490, 2.9468,

348.2585, 373.2997

2.9688

397.2812,
411.1218, 441.0557

■ 1.1797, 1.1040,
1.0787

■ 0.0903, 0.0000,
0.0000

■ 74.2990, 75.9359,
80.5532

■ 74.2990, 75.9359,
80.5532

■ 65.4665, 63.0123,
62.9897

■ 84.4577, 90.8001,
100.7486

■ 57.8993, 51.9398,
47.9451

■ 88.4025, 96.5731,
108.5889

■ 51.5415, 42.6368,
35.3055

■ 46.3306, 35.0117,
24.9462

■ 42.1981, 28.9645,
16.7315

■ 39.0686, 24.3848,
10.5112

■ 36.8569, 21.1480,
6.1159

■ 35.4636, 19.1088,
3.3478

■ 34.7665, 18.0881,
1.9636

Harmonies

Analogous

The Analogous color harmony consists of three colors that are next to each other on the color wheel.



74.3938, 75.9359, 83.8401



74.2990, 75.9359, 80.5532



73.6316, 75.9359, 77.9049

Triad

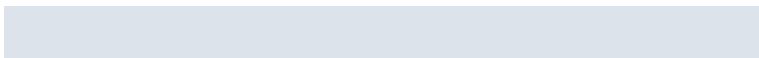
The Triadic color harmony groups three colors that are evenly spaced from another and form a triangle on the color wheel.



74.2990, 75.9359, 80.5532



70.4872, 75.9359, 78.6058



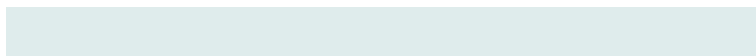
71.7728, 75.9359, 89.1332

Complementary

The Complementary color scheme is a pair of colors which are on the opposite of each other on the color wheel.



74.2990, 75.9359, 80.5532



75.5671, 81.7337, 91.1512

Split Complementary

Split-complementary colors differ from the complementary color scheme. The scheme consists of three colors, the original color and two neighbors of the complement color.



70.7374, 75.9359, 87.6490



74.2990, 75.9359, 80.5532



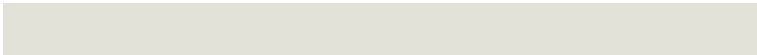
70.0004, 75.9359, 81.5332

Square

The Square scheme is like the rectangle color scheme, but the four colors are evenly spaced on the color wheel.



74.2990, 75.9359, 80.5532



71.4279, 75.9359, 76.8016



70.0915, 75.9359, 84.8465



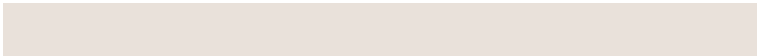
72.9269, 75.9359, 88.8536

Rectangle

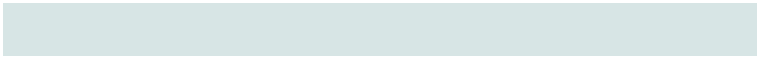
The Rectangle color scheme consists of four colors that form a rectangle on the color wheel.



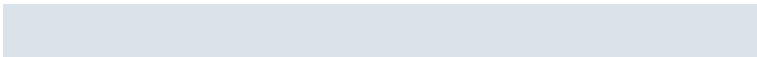
74.2990, 75.9359, 80.5532



72.9556, 75.9359, 76.8299



70.0915, 75.9359, 84.8465



71.3995, 75.9359, 88.8225

Sweetspot

The Sweet Spot groups the original color and five complimentary colors.



74.3011, 75.9392, 80.5548



92.6347, 96.4659, 104.0977



76.1211, 76.6655, 90.1437



19.8529, 20.6847, 22.3315



0.0000, 0.0000, 0.0000



20.3446, 21.4041, 23.3091

Same Dimension

The Same Dimension uses a secret algorithm to generate beautiful new colors.



74.3011, 75.9392, 80.5548



86.8772, 88.0416, 92.6505



76.0702, 79.4774, 81.1445



15.4328, 15.5917, 16.3600



19.0684, 9.8310, 0.8926



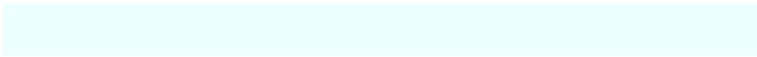
1.4975, 0.7722, 0.0701

Inverse Universe

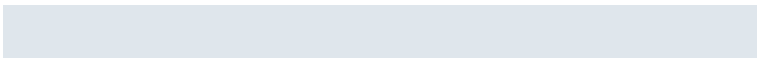
The Inverse Universe completely reimagines the original color for something new.



75.5671, 81.7337, 91.1512



88.7834, 96.7669, 108.6062



73.7307, 78.0609, 90.5390



15.7987, 17.2662, 19.4223



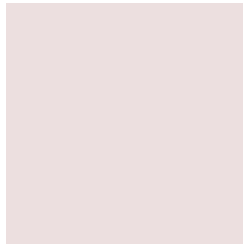
24.8685, 36.3839, 49.4551



1.9529, 2.8573, 3.8835

Previews

White Background



This preview shows how the XYZ color 74.2990, 75.9359, 80.5532 looks on a white background.

Color Contrast Check

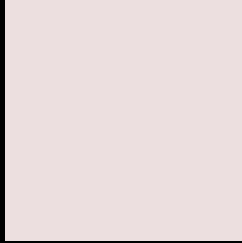
Large Text (above 18pt) WCAG AA × Fail

Any Text WCAG AA × Fail

Large Text (above 18pt) WCAG AAA × Fail

Any Text WCAG AAA × Fail

Black Background



This preview shows how the XYZ color 74.2990, 75.9359, 80.5532 looks on a black background.

Color Contrast Check

Large Text (above 18pt) WCAG AA ✓ Pass

Any Text WCAG AA ✓ Pass

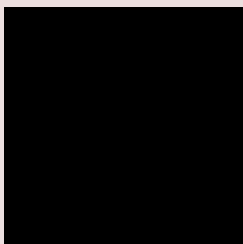
Large Text (above 18pt) WCAG AAA ✓ Pass

Any Text WCAG AAA ✓ Pass

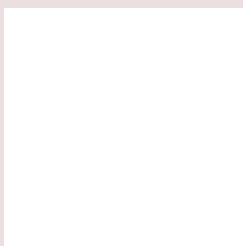
If you want to check with other color combinations, try the [Color Contrast Checker](#).

XYZ 74.2990, 75.9359, 80.5532

Background



This preview shows how black text looks on a background with the XYZ color 74.2990, 75.9359, 80.5532.



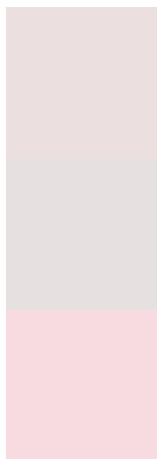
This preview shows how white text looks on a background with the XYZ color 74.2990, 75.9359,

80.5532.

Color Blindness Simulation

Color vision deficiency is a very complex topic, and I could not describe the different causes any better than Wikipedia does, so if you want to learn more, you should check out their [article about color blindness](#).

Dichromacy



Original Color

74.2990, 75.9359, 80.5532

Protanopia

73.0129, 76.0552, 81.3529

Deuteranopia

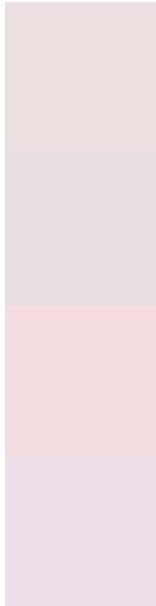
77.4975, 76.0013, 81.1062



Tritanopia

76.5490, 76.0631, 91.5360

Trichromacy



Original Color

74.2990, 75.9359, 80.5532

Protanomaly

73.3889, 75.8489, 81.2933

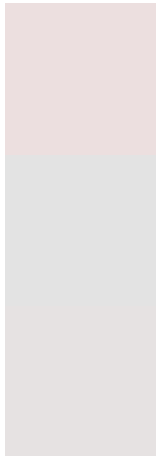
Deuteranomaly

76.3560, 75.8013, 81.1277

Tritanomaly

75.7543, 76.1303, 87.7927

Monochromacy



Original Color

74.2990, 75.9359, 80.5532

Achromatopsia

73.0128, 76.8151, 83.6517

Achromatomaly

73.5570, 76.7067, 82.8805

CSS Examples

Text

The CSS property to change the color of the text to XYZ 74.2990, 75.9359, 80.5532 is called "color". The color property can be set on classes, ids or directly on the HTML element.

This example shows how text in the color rgb(236, 223, 223) looks like.

```
.text, #text, p{  
    color:rgb(236, 223, 223)  
}
```

If you want to add a text shadow in that color use the text-shadow property, you can generate a text shadow directly with our [CSS Text Shadow Generator](#).

Here you see how black text with a 4 pixel rgb(236, 223, 223) colored shadow looks like.

```
.shadow{ text-shadow: 4px 4px 2px rgb(236, 223, 223) }
```

Border

The CSS property to change the border of an element to XYZ 74.2990, 75.9359, 80.5532 is called "border". The border property can be set on classes, ids or directly on the HTML element.

This example shows the color as border, it can be applied via the CSS property "border" or "border-color".

```
.border, #border, table{ border:4px solid rgb(236, 223, 223) }
```


If only the border color should be changed use the property `border-color`.

```
.border{ border-color:rgb(236, 223, 223) }
```

If you want to add a box shadow in that color use:

Here you see how a box with a 4 pixel `rgb(236, 223, 223)` colored shadow looks like.

```
.boxshadow{ -moz-box-shadow:4px 4px 4px  
4px rgb(236, 223, 223); -webkit-box-  
shadow:4px 4px 4px 4px rgb(236, 223, 223);  
box-shadow:4px 4px 4px 4px rgb(236, 223,  
223) }
```

Background

The CSS property to change the background color of an element to XYZ 74.2990, 75.9359, 80.5532 is called "background". The background property can be set on classes, ids or directly on the HTML element.

```
.background, #background, body{  
background: rgb(236, 223, 223) }
```

If only the background color should be changed can be used:

```
.background{ background-color: rgb(236,  
223, 223) }
```

This example shows the color as background, it is applied via the CSS property "background".

To optimize and compress your CSS code, you can use our [online CSS compressor and optimizer](#) based on csstidy. If you want to create a linear or radial gradient as background or border, check our [CSS Gradient Generator](#).

Hey! You found this booklet interesting? Support Converting Colors with the new Membership Option!

The pro membership hides all ads, plus gives you double the colors in the color bucket, and more awesome pro features!

[Learn more, Memberships starting at \\$2.50/m!](#)

**Follow me
on Twitter!**

@ConvertingColor