

Converting Colors

XYZ(74.3911, 75.9418, 80.0979)

Have a look what the booklet for
XYZ(74.3911, 75.9418, 80.0979)
contains.

XYZ(74.4975, 76.0538, 79.8607)	3
<i>Conversions</i>	4
<i>Details</i>	6
<i>Harmonies</i>	12
<i>Previews</i>	24
<i>Color Blindness Simulation</i>	28
<i>CSS Examples</i>	31

Color

**XYZ(74.4975, 76.0538,
79.8607)**

Conversions

Conversions Part 1

Format	Color
Hex	EDDFDE
RGB	237, 223, 222
RGB Percent	93%, 87%, 87%
CMY	0.0706, 0.1255, 0.1294
CMYK	0.00, 0.06, 0.06, 0.07
HSL	4°, 29%, 90%
HSV	4°, 6%, 93%
XYZ	74.4975, 76.0538, 79.8607
YIQ	227.0720, 8.6650, 2.6570

Conversions

Conversions Part 2

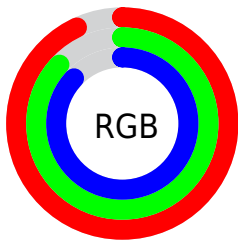
Format	Color
RYB	237, 223, 222
Decimal	15589342
CIELab	89.88, 4.61, 2.19
CIELCh	90, 5.101, 25.464
Yxy	76.0538, 0.3233, 0.3301
Android (android.graphics.Color)	4293779422 (0xFFEDDFDE)
YUV	227.0720, -2.5005, 8.7069
Hunter-Lab	87.2088, -0.1331, 6.7519

Details

The XYZ color **74.4975, 76.0538, 79.8607** is a light color, and the websafe version is hex **CCCCCC**. A complement of this color would be **75.4055, 81.6335, 91.9041**, and the grayscale version is **73.0810, 76.8869, 83.7299**.

A 20% lighter version of the original color is **95.0500, 100.0000, 108.9000**, and **40.0337, 40.6190, 42.2895** is the 20% darker color. If you saturate the color by 10%, you get **66.0148, 63.8189, 62.4475**, and if you desaturate by 10%, it is **84.2027, 90.0173, 99.8861**.

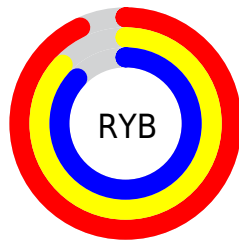
Distribution



Red (93%)

Green (87%)

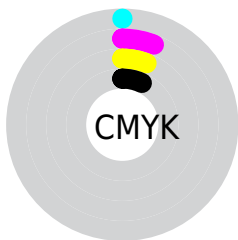
Blue (87%)



Red (93%)

Yellow (87%)

Blue (87%)

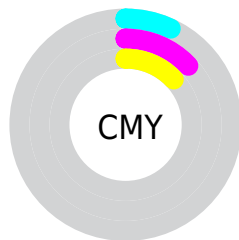


Cyan (0%)

Magenta (6%)

Yellow (6%)

Black (7%)



Cyan (7%)

Magenta (13%)

Yellow (13%)

Brightness & Saturation Gradients

These gradients show how the XYZ color 74.4975, 76.0538, 79.8607 changes by changing the brightness by 10 percent. The first figure shows a shift by +10% for each color and the second figure -10%.

Similar to the brightness gradients but the following saturation gradients show a change of the XYZ color 74.4975, 76.0538, 79.8607 by changing the saturation by 10% instead.

74.4975, 76.0538,
79.8607

74.4975, 76.0538,
79.8607

465.2125,
481.5318, 514.1576

55.4940, 56.4766,
59.0782

124.5925,
127.8030, 134.9795

40.0328, 40.5852,
42.2557

156.4148,
160.7437, 170.1529

27.7485, 27.9951,
28.9745

193.2407,
198.9078, 210.9604

18.2756, 18.3220,
18.8161

235.4356,
242.6796, 257.8205

11.2489, 11.1814,
11.3620

283.3649,
292.4435, 311.1517

6.3030, 6.1890,
6.1937

337.3939,

3.0726, 2.9603,

348.5839, 371.3726

2.8925

397.8880,
411.4852, 438.9017

■ 1.1923, 1.1111,
1.0400

■ 0.1003, 0.0000,
0.0000

■ 74.4975, 76.0538,
79.8607

■ 74.4975, 76.0538,
79.8607

■ 66.0148, 63.8189,
62.4475

■ 84.2027, 90.0173,
99.8861

■ 58.6999, 53.2357,
47.5342

■ 88.7354, 96.7447,
108.6045

■ 52.5036, 44.2366,
35.0074

■ 47.3708, 36.7453,
24.7433

■ 43.2414, 30.6792,
16.6069

■ 40.0496, 25.9481,
10.4486

■ 37.7216, 22.4510,
6.0997

■ 36.1724, 20.0727,
3.3632

■ 35.2994, 18.6763,
1.9943

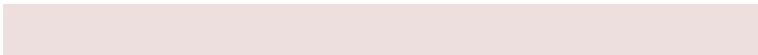
Harmonies

Analogous

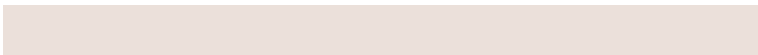
The Analogous color harmony consists of three colors that are next to each other on the color wheel.



74.7302, 76.0538, 83.3599



74.4975, 76.0538, 79.8607



73.6698, 76.0538, 77.2217

Triad

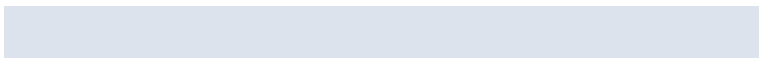
The Triadic color harmony groups three colors that are evenly spaced from another and form a triangle on the color wheel.



74.4975, 76.0538, 79.8607



70.3084, 76.0538, 78.9361



72.0953, 76.0538, 89.9245

Complementary

The Complementary color scheme is a pair of colors which are on the opposite of each other on the color wheel.



74.4975, 76.0538, 79.8607



75.4055, 81.6335, 91.9041

Split Complementary

Split-complementary colors differ from the complementary color scheme. The scheme consists of three colors, the original color and two neighbors of the complement color.



70.9213, 76.0538, 88.6609



74.4975, 76.0538, 79.8607



69.8973, 76.0538, 82.2618

Square

The Square scheme is like the rectangle color scheme, but the four colors are evenly spaced on the color wheel.



74.4975, 76.0538, 79.8607



71.2497, 76.0538, 76.6988



70.1204, 76.0538, 85.8303



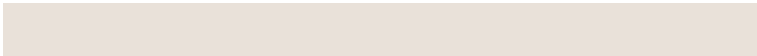
73.3340, 76.0538, 89.2368

Rectangle

The Rectangle color scheme consists of four colors that form a rectangle on the color wheel.



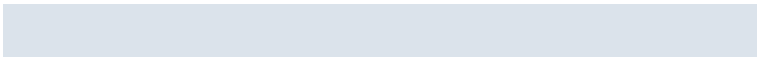
74.4975, 76.0538, 79.8607



72.8970, 76.0538, 76.2700



70.1204, 76.0538, 85.8303



71.6802, 76.0538, 89.7129

Sweetspot

The Sweet Spot groups the original color and five complimentary colors.



74.4996, 76.0571, 79.8623



92.7403, 96.6772, 104.1329



76.1876, 76.3043, 90.0704



19.8744, 20.7277, 22.3386



0.0000, 0.0000, 0.0000



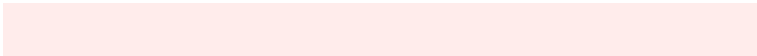
20.3446, 21.4041, 23.3091

Same Dimension

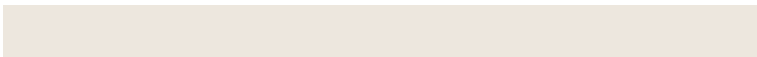
The Same Dimension uses a secret algorithm to generate beautiful new colors.



74.4996, 76.0571, 79.8623



86.1632, 87.2062, 90.5858



76.5470, 80.1518, 80.5448



15.1464, 15.2158, 15.6574



19.2007, 10.0957, 0.9367



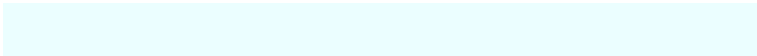
1.5362, 0.8497, 0.0830

Inverse Universe

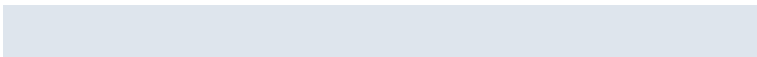
The Inverse Universe completely reimagines the original color for something new.



75.4055, 81.6335, 91.9041



87.5049, 95.4660, 108.4225



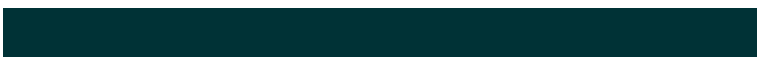
73.2925, 77.4074, 91.1997



15.4263, 16.9391, 19.3788



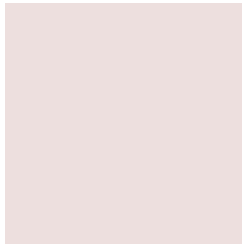
22.5206, 31.6883, 48.6725



1.7945, 2.5404, 3.8306

Previews

White Background



This preview shows how the XYZ color 74.4975, 76.0538, 79.8607 looks on a white background.

Color Contrast Check

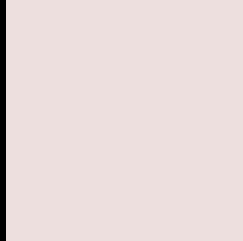
Large Text (above 18pt) WCAG AA × Fail

Any Text WCAG AA × Fail

Large Text (above 18pt) WCAG AAA × Fail

Any Text WCAG AAA × Fail

Black Background



This preview shows how the XYZ color 74.4975, 76.0538, 79.8607 looks on a black background.

Color Contrast Check

Large Text (above 18pt) WCAG AA ✓ Pass

Any Text WCAG AA ✓ Pass

Large Text (above 18pt) WCAG AAA ✓ Pass

Any Text WCAG AAA ✓ Pass

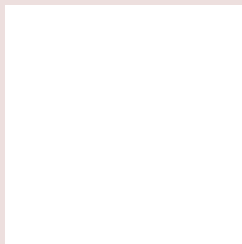
If you want to check with other color combinations, try the [Color Contrast Checker](#).

XYZ 74.4975, 76.0538, 79.8607

Background



This preview shows how black text looks on a background with the XYZ color 74.4975, 76.0538, 79.8607.



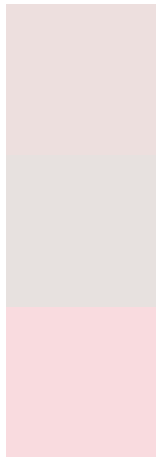
This preview shows how white text looks on a background with the XYZ color 74.4975, 76.0538,

79.8607.

Color Blindness Simulation

Color vision deficiency is a very complex topic, and I could not describe the different causes any better than Wikipedia does, so if you want to learn more, you should check out their [article about color blindness](#).

Dichromacy



Original Color

74.4975, 76.0538, 79.8607

Protanopia

73.1995, 76.1671, 80.6557

Deuteranopia

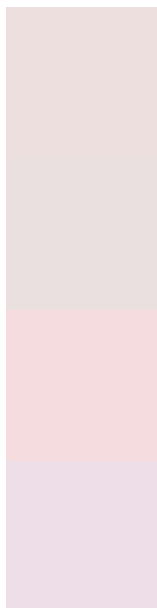
77.7177, 76.1305, 80.4105



Tritanopia

76.8857, 76.2367, 91.5518

Trichromacy



Original Color

74.4975, 76.0538, 79.8607

Protanomaly

73.5792, 75.9627, 80.5963

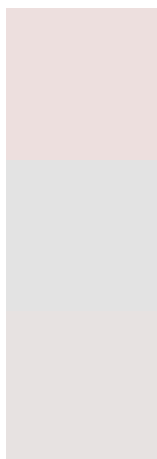
Deuteranomaly

76.5687, 75.9266, 80.4317

Tritanomaly

75.9467, 76.2459, 87.0580

Monochromacy



Original Color

74.4975, 76.0538, 79.8607

Achromatopsia

73.0128, 76.8151, 83.6517

Achromatomaly

73.7420, 76.8179, 82.1749

CSS Examples

Text

The CSS property to change the color of the text to XYZ 74.4975, 76.0538, 79.8607 is called "color". The color property can be set on classes, ids or directly on the HTML element.

This example shows how text in the color rgb(237, 223, 222) looks like.

```
.text, #text, p{  
    color:rgb(237, 223, 222)  
}
```

If you want to add a text shadow in that color use the text-shadow property, you can generate a text shadow directly with our [CSS Text Shadow Generator](#).

Here you see how black text with a 4 pixel rgb(237, 223, 222) colored shadow looks like.

```
.shadow{ text-shadow: 4px 4px 2px rgb(237, 223, 222) }
```

Border

The CSS property to change the border of an element to XYZ 74.4975, 76.0538, 79.8607 is called "border". The border property can be set on classes, ids or directly on the HTML element.

This example shows the color as border, it can be applied via the CSS property "border" or "border-color".

```
.border, #border, table{ border:4px solid rgb(237, 223, 222) }
```


If only the border color should be changed use the property `border-color`.

```
.border{ border-color:rgb(237, 223, 222) }
```

If you want to add a box shadow in that color use:

Here you see how a box with a 4 pixel `rgb(237, 223, 222)` colored shadow looks like.

```
.boxshadow{ -moz-box-shadow:4px 4px 4px  
4px rgb(237, 223, 222); -webkit-box-  
shadow:4px 4px 4px 4px rgb(237, 223, 222);  
box-shadow:4px 4px 4px 4px rgb(237, 223,  
222) }
```

Background

The CSS property to change the background color of an element to XYZ 74.4975, 76.0538, 79.8607 is called "background". The background property can be set on classes, ids or directly on the HTML element.

```
.background, #background, body{  
background: rgb(237, 223, 222) }
```

If only the background color should be changed can be used:

```
.background{ background-color: rgb(237,  
223, 222) }
```

This example shows the color as background, it is applied via the CSS property "background".

To optimize and compress your CSS code, you can use our [online CSS compressor and optimizer](#) based on csstidy. If you want to create a linear or radial gradient as background or border, check our [CSS Gradient Generator](#).

Hey! You found this booklet interesting? Support Converting Colors with the new Membership Option!

The pro membership hides all ads, plus gives you double the colors in the color bucket, and more awesome pro features!

[Learn more, Memberships starting at \\$2.50/m!](#)

**Follow me
on Twitter!**

@ConvertingColor