

# Converting Colors

XYZ(74.4521, 76.0945, 81.4626)

Have a look what the booklet for  
XYZ(74.4521, 76.0945, 81.4626)  
contains.

<b>XYZ(74.4343, 75.9900, 81.2654)</b> .....	3
<b><i>Conversions</i></b> .....	4
<b><i>Details</i></b> .....	6
<b><i>Harmonies</i></b> .....	12
<b><i>Previews</i></b> .....	24
<b><i>Color Blindness Simulation</i></b> .....	28
<b><i>CSS Examples</i></b> .....	31

# Color

**XYZ(74.4343, 75.9900,  
81.2654)**

# Conversions

## Conversions Part 1

<b>Format</b>	<b>Color</b>
Hex	ECDFE0
RGB	236, 223, 224
RGB Percent	93%, 87%, 88%
CMY	0.0745, 0.1255, 0.1216
CMYK	0.00, 0.06, 0.05, 0.07
HSL	355°, 25%, 90%
HSV	355°, 6%, 93%
XYZ	74.4343, 75.9900, 81.2654
YIQ	227.0010, 7.4270, 3.0670

# Conversions

## Conversions Part 2

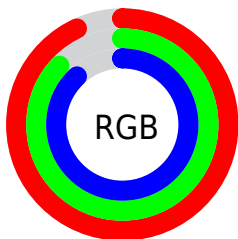
<b>Format</b>	<b>Color</b>
R <sub>Y</sub> B	236, 223, 224
Decimal	15523808
CIE Lab	89.85, 4.60, 1.09
CIE LCh	90, 4.731, 13.332
Yxy	75.9900, 0.3213, 0.3280
Android (android.graphics.Color)	4293713888 (0xFFE0D0)
YUV	227.0010, -1.4795, 7.8921
Hunter-Lab	87.1722, -0.1345, 5.7481

# Details

The XYZ color **74.4343, 75.9900, 81.2654** is a light color, and the websafe version is hex **CCCCCC**. A complement of this color would be **75.4252, 81.6790, 90.3917**, and the grayscale version is **73.0228, 76.8257, 83.6632**.

A 20% lighter version of the original color is **95.0500, 100.0000, 108.9000**, and **39.9865, 40.5731, 43.2600** is the 20% darker color. If you saturate the color by 10%, you get **65.7949, 63.1410, 64.7273**, and if you desaturate by 10%, it is **84.3356, 90.7548, 100.0947**.

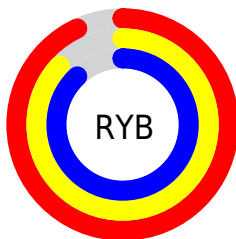
# Distribution



Red (93%)

Green (87%)

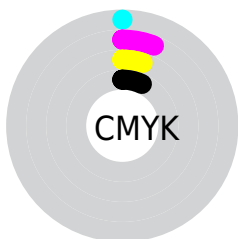
Blue (88%)



Red (93%)

Yellow (87%)

Blue (88%)

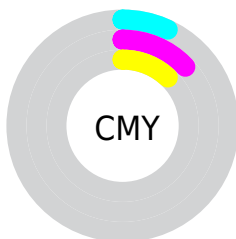


Cyan (0%)

Magenta (6%)

Yellow (5%)

Black (7%)



Cyan (7%)

Magenta (13%)

Yellow (12%)

# Brightness & Saturation Gradients

These gradients show how the XYZ color 74.4343, 75.9900, 81.2654 changes by changing the brightness by 10 percent. The first figure shows a shift by +10% for each color and the second figure -10%.

Similar to the brightness gradients but the following saturation gradients show a change of the XYZ color 74.4343, 75.9900, 81.2654 by changing the saturation by 10% instead.



74.4343, 75.9900,  
81.2654

74.4343, 75.9900,  
81.2654

464.9981,  
481.3135, 519.0059

55.4421, 56.4243,  
60.2279

124.5035,  
127.7128, 136.9708

39.9910, 40.5432,  
43.1759

156.3112,  
160.6386, 172.4758

27.7157, 27.9623,  
29.6907

193.1214,  
198.7867, 213.6404

18.2508, 18.2973,  
19.3539

235.2995,  
242.5413, 260.8831

11.2310, 11.1636,  
11.7469

283.2109,  
292.2869, 314.6224

6.2909, 6.1770,  
6.4511

337.2209,

3.0651, 2.9530,

348.4079, 375.2770

3.0481

397.6948,  
411.2886, 443.2653

■ 1.1883, 1.1072,  
1.1192

■ 0.0971, 0.0000,  
0.0000

■ 74.4343, 75.9900,  
81.2654

■ 74.4343, 75.9900,  
81.2654

■ 65.7949, 63.1410,  
64.7273

■ 84.3356, 90.7548,  
100.0947

■ 58.3607, 52.1198,  
50.3881

■ 88.4025, 96.5731,  
108.5889

■ 52.0798, 42.8465,  
38.1568

■ 46.8944, 35.2312,  
27.9339

■ 42.7417, 29.1761,  
19.6118

■ 39.5521, 24.5731,  
13.0732

■ 37.2480, 21.3004,  
8.1874

■ 35.7391, 19.2163,  
4.8059

■ 34.9159, 18.1467,  
2.7534

# Harmonies

## Analogous

The Analogous color harmony consists of three colors that are next to each other on the color wheel.



74.3998, 75.9900, 84.5993



74.4343, 75.9900, 81.2654



73.8726, 75.9900, 78.4032

# Triad

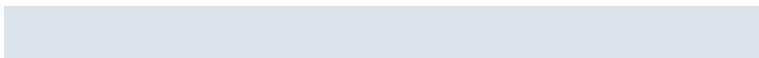
The Triadic color harmony groups three colors that are evenly spaced from another and form a triangle on the color wheel.



74.4343, 75.9900, 81.2654



70.6955, 75.9900, 78.1480



71.5838, 75.9900, 89.0580

# Complementary

The Complementary color scheme is a pair of colors which are on the opposite of each other on the color wheel.



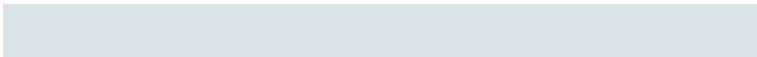
74.4343, 75.9900, 81.2654



75.4252, 81.6790, 90.3917

# Split Complementary

Split-complementary colors differ from the complementary color scheme. The scheme consists of three colors, the original color and two neighbors of the complement color.



70.6044, 75.9900, 87.2343



74.4343, 75.9900, 81.2654



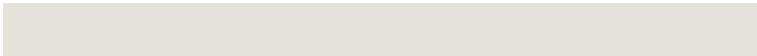
70.0954, 75.9900, 80.9085

# Square

The Square scheme is like the rectangle color scheme, but the four colors are evenly spaced on the color wheel.



74.4343, 75.9900, 81.2654



71.7094, 75.9900, 76.6363



70.0622, 75.9900, 84.2327



72.7455, 75.9900, 89.1598



# Rectangle

The Rectangle color scheme consists of four colors that form a rectangle on the color wheel.



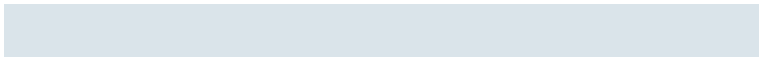
74.4343, 75.9900, 81.2654



73.2392, 75.9900, 77.1229



70.0622, 75.9900, 84.2327



71.2226, 75.9900, 88.6238

# Sweetspot

The Sweet Spot groups the original color and five complimentary colors.



74.4364, 75.9933, 81.2670



92.6955, 96.4895, 104.4205



75.7637, 76.4828, 90.1274



19.8653, 20.6895, 22.3972



0.0000, 0.0000, 0.0000



20.3446, 21.4041, 23.3091

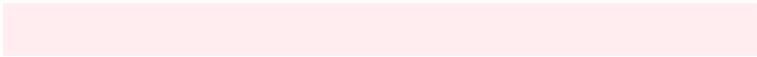


# Same Dimension

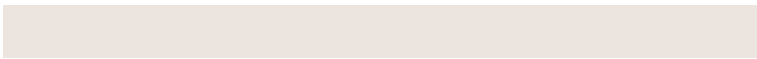
The Same Dimension uses a secret algorithm to generate beautiful new colors.



74.4364, 75.9933, 81.2670



87.0765, 88.1188, 93.7077



75.7718, 78.8796, 81.0476



15.4709, 15.6064, 16.5622



19.1462, 9.8612, 1.3053



1.5198, 0.7809, 0.1885

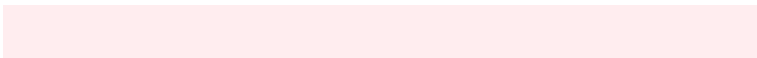


# Inverse Universe

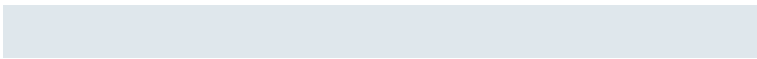
The Inverse Universe completely reimagines the original color for something new.



74.4364, 75.9933, 81.2670



87.0765, 88.1188, 93.7077



74.0340, 78.6657, 90.6399



15.4709, 15.6064, 16.5622



19.1462, 9.8612, 1.3053

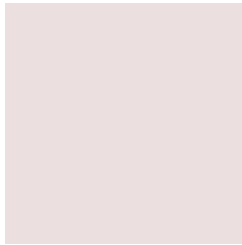


1.5198, 0.7809, 0.1885



# Previews

## White Background



This preview shows how the XYZ color 74.4343, 75.9900, 81.2654 looks on a white background.

## Color Contrast Check

Large Text (above 18pt) WCAG AA × Fail

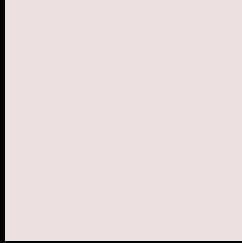
Any Text WCAG AA × Fail

Large Text (above 18pt) WCAG AAA × Fail

Any Text WCAG AAA × Fail



# Black Background



This preview shows how the XYZ color 74.4343, 75.9900, 81.2654 looks on a black background.

## Color Contrast Check

Large Text (above 18pt) WCAG AA ✓ Pass

Any Text WCAG AA ✓ Pass

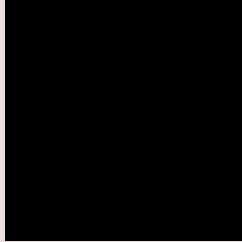
Large Text (above 18pt) WCAG AAA ✓ Pass

Any Text WCAG AAA ✓ Pass

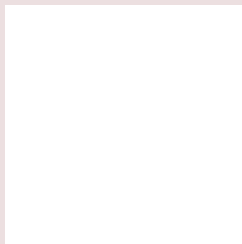
If you want to check with other color combinations, try the [Color Contrast Checker](#).

# XYZ 74.4343, 75.9900, 81.2654

## Background



This preview shows how black text looks on a background with the XYZ color 74.4343, 75.9900, 81.2654.



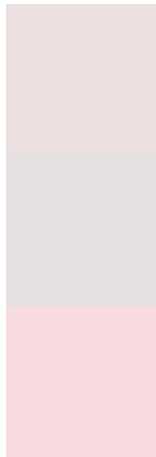
This preview shows how white text looks on a background with the XYZ color 74.4343, 75.9900,

81.2654.

# Color Blindness Simulation

Color vision deficiency is a very complex topic, and I could not describe the different causes any better than Wikipedia does, so if you want to learn more, you should check out their [article about color blindness](#).

## Dichromacy



### Original Color

74.4343, 75.9900, 81.2654

### Protanopia

73.1489, 76.1097, 82.0694

### Deuteranopia

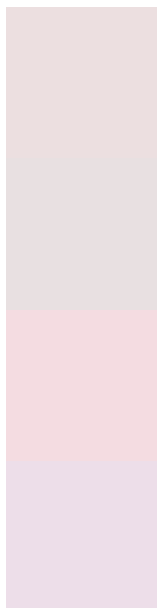
77.6335, 76.0557, 81.8227



## Tritanopia

76.5490, 76.0631, 91.5360

# Trichromacy



## Original Color

74.4343, 75.9900, 81.2654

## Protanomaly

73.5250, 75.9034, 82.0098

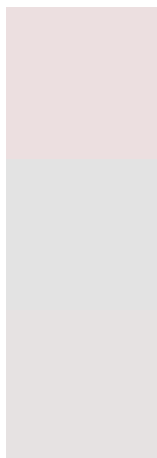
## Deuteranomaly

76.4920, 75.8557, 81.8442

## Tritanomaly

75.7543, 76.1303, 87.7927

# Monochromacy



## Original Color

74.4343, 75.9900, 81.2654

## Achromatopsia

73.0128, 76.8151, 83.6517

## Achromatomaly

73.5570, 76.7067, 82.8805

# CSS Examples

## Text

The CSS property to change the color of the text to XYZ 74.4343, 75.9900, 81.2654 is called "color". The color property can be set on classes, ids or directly on the HTML element.

This example shows how text in the color rgb(236, 223, 224) looks like.

```
.text, #text, p{  
    color:rgb(236, 223, 224)  
}
```

If you want to add a text shadow in that color use the text-shadow property, you can generate a text shadow directly with our [CSS Text Shadow Generator](#).

Here you see how black text with a 4 pixel rgb(236, 223, 224) colored shadow looks like.

```
.shadow{ text-shadow: 4px 4px 2px rgb(236, 223, 224) }
```

## Border

The CSS property to change the border of an element to XYZ 74.4343, 75.9900, 81.2654 is called "border". The border property can be set on classes, ids or directly on the HTML element.

This example shows the color as border, it can be applied via the CSS property "border" or "border-color".

```
.border, #border, table{ border:4px solid rgb(236, 223, 224) }
```



If only the border color should be changed use the property `border-color`.

```
.border{ border-color:rgb(236, 223, 224) }
```

If you want to add a box shadow in that color use:

Here you see how a box with a 4 pixel `rgb(236, 223, 224)` colored shadow looks like.

```
.boxshadow{ -moz-box-shadow:4px 4px 4px  
4px rgb(236, 223, 224); -webkit-box-  
shadow:4px 4px 4px 4px rgb(236, 223, 224);  
box-shadow:4px 4px 4px 4px rgb(236, 223,  
224) }
```

# Background

The CSS property to change the background color of an element to XYZ 74.4343, 75.9900, 81.2654 is called "background". The background property can be set on classes, ids or directly on the HTML element.

```
.background, #background, body{  
background: rgb(236, 223, 224) }
```

If only the background color should be changed can be used:

```
.background{ background-color: rgb(236,  
223, 224) }
```

This example shows the color as background, it is applied via the CSS property "background".

To optimize and compress your CSS code, you can use our [online CSS compressor and optimizer](#) based on csstidy. If you want to create a linear or radial gradient as background or border, check our [CSS Gradient Generator](#).

Hey! You found this booklet interesting? Support Converting Colors with the new Membership Option!

The pro membership hides all ads, plus gives you double the colors in the color bucket, and more awesome pro features!

**[Learn more, Memberships starting at \\$2.50/m!](#)**

**Follow me  
on Twitter!**

@ConvertingColor