

Converting Colors

XYZ(74.5260, 75.6874, 78.7466)

Have a look what the booklet for
XYZ(74.5260, 75.6874, 78.7466)
contains.

XYZ(74.4323, 75.6402, 79.0836)	3
<i>Conversions</i>	4
<i>Details</i>	6
<i>Harmonies</i>	12
<i>Previews</i>	24
<i>Color Blindness Simulation</i>	28
<i>CSS Examples</i>	31

Color

**XYZ(74.4323, 75.6402,
79.0836)**

Conversions

Conversions Part 1

Format	Color
Hex	EEDEDD
RGB	238, 222, 221
RGB Percent	93%, 87%, 87%
CMY	0.0667, 0.1294, 0.1333
CMYK	0.00, 0.07, 0.07, 0.07
HSL	4°, 33%, 90%
HSV	4°, 7%, 93%
XYZ	74.4323, 75.6402, 79.0836
YIQ	226.6700, 9.8570, 3.0810

Conversions

Conversions Part 2

Format	Color
R _Y B	238, 222, 221
Decimal	15654621
CIE Lab	89.69, 5.30, 2.45
CIE LCh	90, 5.838, 24.797
Yxy	75.6402, 0.3248, 0.3301
Android (android.graphics.Color)	4293844701 (0xFFEEDEDD)
YUV	226.6700, -2.7953, 9.9364
Hunter-Lab	86.9714, 0.5649, 6.9672

Details

The XYZ color **74.4323, 75.6402, 79.0836** is a light color, and the websafe version is hex **CCCCCC**. A complement of this color would be **75.5353, 82.1120, 92.7578**, and the grayscale version is **72.7904, 76.5812, 83.3969**.

A 20% lighter version of the original color is **95.0500, 100.0000, 108.9000**, and **39.9931, 40.3357, 41.7541** is the 20% darker color. If you saturate the color by 10%, you get **65.9259, 63.3467, 61.6969**, and if you desaturate by 10%, it is **84.1825, 89.7001, 99.1045**.

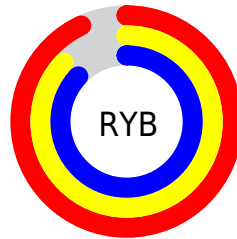
Distribution



Red (93%)

Green (87%)

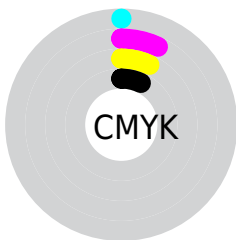
Blue (87%)



Red (93%)

Yellow (87%)

Blue (87%)

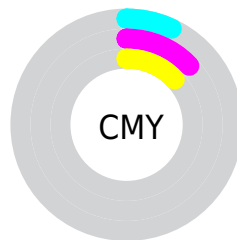


Cyan (0%)

Magenta (7%)

Yellow (7%)

Black (7%)



Cyan (7%)

Magenta (13%)

Yellow (13%)

Brightness & Saturation Gradients

These gradients show how the XYZ color 74.4323, 75.6402, 79.0836 changes by changing the brightness by 10 percent. The first figure shows a shift by +10% for each color and the second figure -10%.

Similar to the brightness gradients but the following saturation gradients show a change of the XYZ color 74.4323, 75.6402, 79.0836 by changing the saturation by 10% instead.

74.4323, 75.6402,
79.0836

74.4323, 75.6402,
79.0836

464.9913,
480.1151, 511.4642

55.4405, 56.1375,
58.4428

124.5006,
127.2182, 133.8763

39.9897, 40.3132,
41.7477

156.3079,
160.0623, 168.8653

27.7147, 27.7828,
28.5797

193.1176,
198.1223, 209.4741

18.2501, 18.1620,
18.5203

235.2952,
241.7826, 256.1212

11.2304, 11.0664,
11.1509

283.2060,
291.4277, 309.2253

6.2905, 6.1115,
6.0529

337.2154,

3.0648, 2.9130,

347.4419, 369.2048

2.8080

397.6887,
410.2096, 436.4782

■ 1.1881, 1.0865,
0.9974

■ 0.0970, 0.0000,
0.0000

■ 74.4323, 75.6402,
79.0836

■ 74.4323, 75.6402,
79.0836

■ 65.9259, 63.3467,
61.6969

■ 84.1825, 89.7001,
99.1045

■ 58.6072, 52.7404,
46.8301

■ 89.0702, 96.9173,
108.6202

■ 52.4252, 43.7505,
34.3677

■ 47.3230, 36.2979,
24.1834

■ 43.2383, 30.2962,
16.1395

■ 40.1030, 25.6510,
10.0830

■ 37.8401, 22.2565,
5.8411

■ 36.3609, 19.9913,
3.2112

■ 35.5558, 18.7089,
1.9325

Harmonies

Analogous

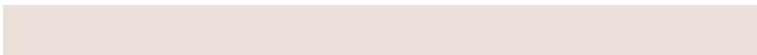
The Analogous color harmony consists of three colors that are next to each other on the color wheel.



74.6817, 75.6402, 83.0792



74.4323, 75.6402, 79.0836



73.4990, 75.6402, 76.0587

Triad

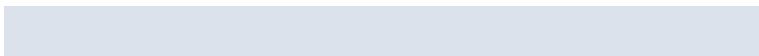
The Triadic color harmony groups three colors that are evenly spaced from another and form a triangle on the color wheel.



74.4323, 75.6402, 79.0836



69.6587, 75.6402, 77.8796



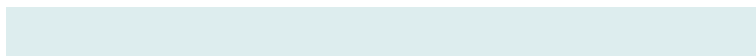
71.6434, 75.6402, 90.4971

Complementary

The Complementary color scheme is a pair of colors which are on the opposite of each other on the color wheel.



74.4323, 75.6402, 79.0836



75.5353, 82.1120, 92.7578

Split Complementary

Split-complementary colors differ from the complementary color scheme. The scheme consists of three colors, the original color and two neighbors of the complement color.



70.3121, 75.6402, 88.9986



74.4323, 75.6402, 79.0836



69.1760, 75.6402, 81.6436

Square

The Square scheme is like the rectangle color scheme, but the four colors are evenly spaced on the color wheel.



74.4323, 75.6402, 79.0836



70.7407, 75.6402, 75.3800



69.4136, 75.6402, 85.7243



73.0593, 75.6402, 89.7567

Rectangle

The Rectangle color scheme consists of four colors that form a rectangle on the color wheel.



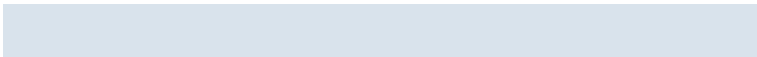
74.4323, 75.6402, 79.0836



72.6210, 75.6402, 74.9539



69.4136, 75.6402, 85.7243



71.1713, 75.6402, 90.2371

Sweetspot

The Sweet Spot groups the original color and five complimentary colors.



74.4344, 75.6435, 79.0852



92.7278, 96.6522, 104.1288



76.4253, 76.0143, 90.8807



19.8719, 20.7226, 22.3378



0.0000, 0.0000, 0.0000



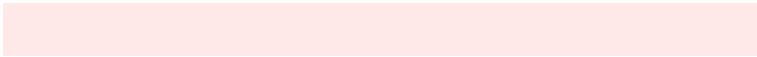
20.3446, 21.4041, 23.3091

Same Dimension

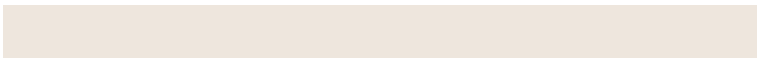
The Same Dimension uses a secret algorithm to generate beautiful new colors.



74.4344, 75.6435, 79.0852



85.0665, 85.5969, 88.4195



76.7063, 80.1872, 79.8425



15.8477, 15.9086, 16.3851



19.7894, 10.3769, 0.9599



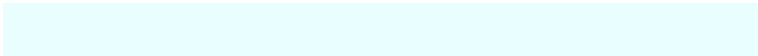
1.6725, 0.9156, 0.0886

Inverse Universe

The Inverse Universe completely reimagines the original color for something new.



75.5353, 82.1120, 92.7578



86.6739, 95.0421, 108.3845



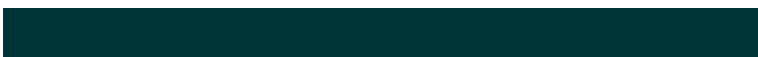
73.1750, 77.3914, 91.9710



16.1627, 17.7596, 20.2977



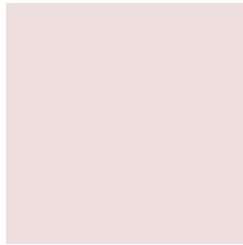
23.5062, 33.2366, 50.3043



1.9796, 2.8132, 4.1929

Previews

White Background



This preview shows how the XYZ color 74.4323, 75.6402, 79.0836 looks on a white background.

Color Contrast Check

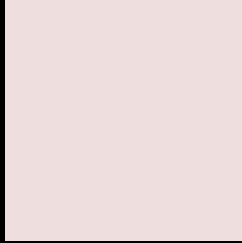
Large Text (above 18pt) WCAG AA × Fail

Any Text WCAG AA × Fail

Large Text (above 18pt) WCAG AAA × Fail

Any Text WCAG AAA × Fail

Black Background



This preview shows how the XYZ color 74.4323, 75.6402, 79.0836 looks on a black background.

Color Contrast Check

Large Text (above 18pt) WCAG AA ✓ Pass

Any Text WCAG AA ✓ Pass

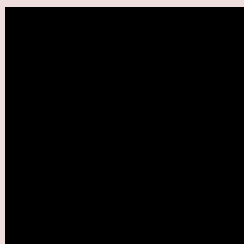
Large Text (above 18pt) WCAG AAA ✓ Pass

Any Text WCAG AAA ✓ Pass

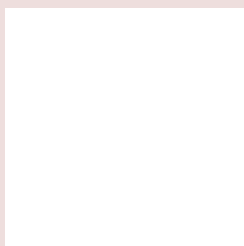
If you want to check with other color combinations, try the [Color Contrast Checker](#).

XYZ 74.4323, 75.6402, 79.0836

Background



This preview shows how black text looks on a background with the XYZ color 74.4323, 75.6402, 79.0836.



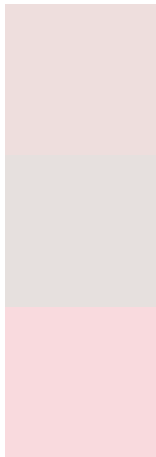
This preview shows how white text looks on a background with the XYZ color 74.4323, 75.6402,

79.0836.

Color Blindness Simulation

Color vision deficiency is a very complex topic, and I could not describe the different causes any better than Wikipedia does, so if you want to learn more, you should check out their [article about color blindness](#).

Dichromacy



Original Color

74.4323, 75.6402, 79.0836

Protanopia

72.4736, 75.4082, 79.8427

Deuteranopia

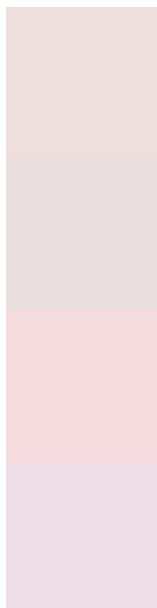
77.3231, 75.5565, 79.6157



Tritanopia

76.8144, 75.8261, 90.7081

Trichromacy



Original Color

74.4323, 75.6402, 79.0836

Protanomaly

73.1768, 75.3729, 79.7988

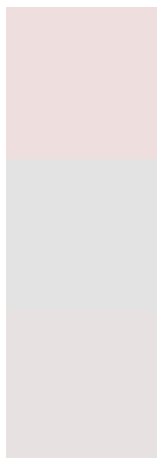
Deuteranomaly

76.1725, 75.3494, 79.6364

Tritanomaly

75.8769, 75.8331, 86.2394

Monochromacy



Original Color

74.4323, 75.6402, 79.0836

Achromatopsia

73.0128, 76.8151, 83.6517

Achromatomaly

73.4708, 76.2756, 82.0845

CSS Examples

Text

The CSS property to change the color of the text to XYZ 74.4323, 75.6402, 79.0836 is called "color". The color property can be set on classes, ids or directly on the HTML element.

This example shows how text in the color rgb(238, 222, 221) looks like.

```
.text, #text, p{  
    color:rgb(238, 222, 221)  
}
```

If you want to add a text shadow in that color use the text-shadow property, you can generate a text shadow directly with our [CSS Text Shadow Generator](#).

Here you see how black text with a 4 pixel rgb(238, 222, 221) colored shadow looks like.

```
.shadow{ text-shadow: 4px 4px 2px rgb(238, 222, 221) }
```

Border

The CSS property to change the border of an element to XYZ 74.4323, 75.6402, 79.0836 is called "border". The border property can be set on classes, ids or directly on the HTML element.

This example shows the color as border, it can be applied via the CSS property "border" or "border-color".

```
.border, #border, table{ border:4px solid rgb(238, 222, 221) }
```


If only the border color should be changed use the property `border-color`.

```
.border{ border-color:rgb(238, 222, 221) }
```

If you want to add a box shadow in that color use:

Here you see how a box with a 4 pixel `rgb(238, 222, 221)` colored shadow looks like.

```
.boxshadow{ -moz-box-shadow:4px 4px 4px  
4px rgb(238, 222, 221); -webkit-box-  
shadow:4px 4px 4px 4px rgb(238, 222, 221);  
box-shadow:4px 4px 4px 4px rgb(238, 222,  
221) }
```

Background

The CSS property to change the background color of an element to XYZ 74.4323, 75.6402, 79.0836 is called "background". The background property can be set on classes, ids or directly on the HTML element.

```
.background, #background, body{  
background: rgb(238, 222, 221) }
```

If only the background color should be changed can be used:

```
.background{ background-color: rgb(238,  
222, 221) }
```

This example shows the color as background, it is applied via the CSS property "background".

To optimize and compress your CSS code, you can use our [online CSS compressor and optimizer](#) based on csstidy. If you want to create a linear or radial gradient as background or border, check our [CSS Gradient Generator](#).

Hey! You found this booklet interesting? Support Converting Colors with the new Membership Option!

The pro membership hides all ads, plus gives you double the colors in the color bucket, and more awesome pro features!

[Learn more, Memberships starting at \\$2.50/m!](#)

**Follow me
on Twitter!**

@ConvertingColor