

Converting Colors

XYZ(74.5584, 74.3162, 79.8739)

Have a look what the booklet for
XYZ(74.5584, 74.3162, 79.8739)
contains.

XYZ(74.9264, 74.6915, 80.2799)	3
<i>Conversions</i>	4
<i>Details</i>	6
<i>Harmonies</i>	12
<i>Previews</i>	24
<i>Color Blindness Simulation</i>	28
<i>CSS Examples</i>	31

Color

**XYZ(74.9264, 74.6915,
80.2799)**

Conversions

Conversions Part 1

Format	Color
Hex	F1DBDF
RGB	241, 219, 223
RGB Percent	95%, 86%, 87%
CMY	0.0549, 0.1412, 0.1255
CMYK	0.00, 0.09, 0.07, 0.05
HSL	349°, 44%, 90%
HSV	349°, 9%, 95%
XYZ	74.9264, 74.6915, 80.2799
YIQ	226.0340, 11.8280, 5.9080

Conversions

Conversions Part 2

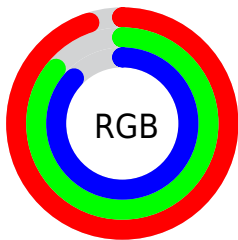
Format	Color
R _Y B	241, 219, 223
Decimal	15850463
CIE Lab	89.25, 8.23, 0.78
CIE LCh	89, 8.267, 5.425
Yxy	74.6915, 0.3259, 0.3249
Android (android.graphics.Color)	4294040543 (0xFFFF1DBDF)
YUV	226.0340, -1.4958, 13.1252
Hunter-Lab	86.4242, 3.5100, 5.4222

Details

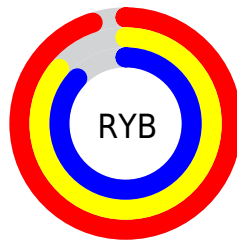
The XYZ color **74.9264, 74.6915, 80.2799** is a light color, and the websafe version is hex **CCCCCC**. A complement of this color would be **75.9576, 84.0869, 92.3518**, and the grayscale version is **72.3196, 76.0858, 82.8575**.

A 20% lighter version of the original color is **95.0500, 100.0000, 108.9000**, and **40.3509, 39.6924, 42.5805** is the 20% darker color. If you saturate the color by 10%, you get **66.5828, 62.0140, 65.1354**, and if you desaturate by 10%, it is **84.4942, 89.3199, 97.3624**.

Distribution



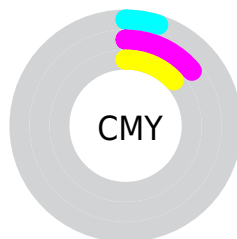
- Red (95%)
- Green (86%)
- Blue (87%)



- Red (95%)
- Yellow (86%)
- Blue (87%)



- Cyan (0%)
- Magenta (9%)
- Yellow (7%)
- Black (5%)



- Cyan (5%)
- Magenta (14%)
- Yellow (13%)

Brightness & Saturation Gradients

These gradients show how the XYZ color 74.9264, 74.6915, 80.2799 changes by changing the brightness by 10 percent. The first figure shows a shift by +10% for each color and the second figure -10%.

Similar to the brightness gradients but the following saturation gradients show a change of the XYZ color 74.9264, 74.6915, 80.2799 by changing the saturation by 10% instead.

74.9264, 74.6915,
80.2799

74.9264, 74.6915,
80.2799

466.6656,
476.8565, 515.6072

55.8466, 55.3602,
59.4212

125.1966,
125.8756, 135.5741

40.3164, 39.6902,
42.5300

157.1177,
158.4971, 170.8467

27.9707, 27.2971,
29.1879

194.0500,
196.3175, 211.7611

18.4439, 17.7965,
18.9762

236.3587,
239.7212, 258.7356

11.3708, 10.8039,
11.4764

284.4093,
289.0926, 312.1890

6.3859, 5.9352,
6.2701

338.5671,

3.1240, 2.8057,

344.8160, 372.5397

2.9386

399.1974,
407.2758, 440.2063

■ 1.2197, 1.0312,
1.0633

■ 0.1218, 0.0000,
0.0000

■ 74.9264, 74.6915,
80.2799

■ 74.9264, 74.6915,
80.2799

■ 66.5828, 62.0140,
65.1354

■ 84.4942, 89.3199,
97.3624

■ 59.4076, 51.1955,
51.8553

■ 90.0860, 97.4410,
108.6677

■ 53.3500, 42.1513,
40.3684

■ 48.3528, 34.7862,
30.5971

■ 44.3540, 28.9963,
22.4581

■ 41.2848, 24.6659,
15.8609

■ 39.0673, 21.6634,
10.7059

■ 37.6107, 19.8331,
6.8813

■ 36.7823, 18.9400,
4.2510

Harmonies

Analogous

The Analogous color harmony consists of three colors that are next to each other on the color wheel.



74.5805, 74.6915, 86.0372



74.9264, 74.6915, 80.2799



74.2019, 74.6915, 75.0519

Triad

The Triadic color harmony groups three colors that are evenly spaced from another and form a triangle on the color wheel.



74.9264, 74.6915, 80.2799



68.7660, 74.6915, 72.6007



69.3901, 74.6915, 91.8597

Complementary

The Complementary color scheme is a pair of colors which are on the opposite of each other on the color wheel.



74.9264, 74.6915, 80.2799



75.9576, 84.0869, 92.3518

Split Complementary

Split-complementary colors differ from the complementary color scheme. The scheme consists of three colors, the original color and two neighbors of the complement color.



67.8761, 74.6915, 87.9410



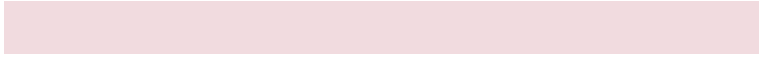
74.9264, 74.6915, 80.2799



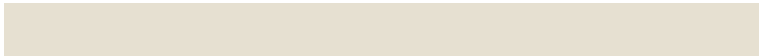
67.5205, 74.6915, 76.7907

Square

The Square scheme is like the rectangle color scheme, but the four colors are evenly spaced on the color wheel.



74.9264, 74.6915, 80.2799



70.6257, 74.6915, 70.7549



67.1979, 74.6915, 82.3818



71.3596, 74.6915, 92.9016

Rectangle

The Rectangle color scheme consists of four colors that form a rectangle on the color wheel.



74.9264, 74.6915, 80.2799



73.2174, 74.6915, 72.5130



67.1979, 74.6915, 82.3818



68.8122, 74.6915, 90.8264

Sweetspot

The Sweet Spot groups the original color and five complimentary colors.



74.9285, 74.6948, 80.2815



91.6662, 94.8191, 102.8804



76.1249, 75.0161, 93.6873



19.4314, 20.0063, 21.6837



0.0000, 0.0000, 0.0000



20.3446, 21.4041, 23.3091

Same Dimension

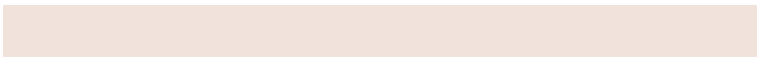
The Same Dimension uses a secret algorithm to generate beautiful new colors.



74.9285, 74.6948, 80.2815



83.2674, 81.9996, 87.8168



76.2514, 78.1926, 78.0956



15.8900, 15.8057, 16.9772



19.9510, 10.2528, 2.3924



1.6923, 0.8660, 0.3706

Inverse Universe

The Inverse Universe completely reimagines the original color for something new.



74.9285, 74.6948, 80.2815



83.2674, 81.9996, 87.8168



74.5255, 80.2780, 94.7872



15.8900, 15.8057, 16.9772



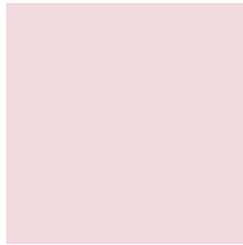
19.9510, 10.2528, 2.3924



1.6923, 0.8660, 0.3706

Previews

White Background



This preview shows how the XYZ color 74.9264, 74.6915, 80.2799 looks on a white background.

Color Contrast Check

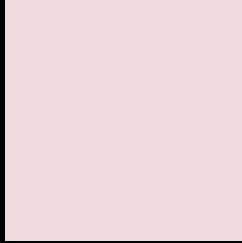
Large Text (above 18pt) WCAG AA × Fail

Any Text WCAG AA × Fail

Large Text (above 18pt) WCAG AAA × Fail

Any Text WCAG AAA × Fail

Black Background



This preview shows how the XYZ color 74.9264, 74.6915, 80.2799 looks on a black background.

Color Contrast Check

Large Text (above 18pt) WCAG AA ✓ Pass

Any Text WCAG AA ✓ Pass

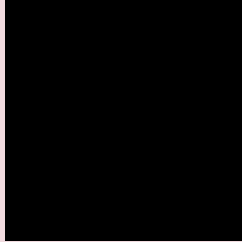
Large Text (above 18pt) WCAG AAA ✓ Pass

Any Text WCAG AAA ✓ Pass

If you want to check with other color combinations, try the [Color Contrast Checker](#).

XYZ 74.9264, 74.6915, 80.2799

Background



This preview shows how black text looks on a background with the XYZ color 74.9264, 74.6915, 80.2799.



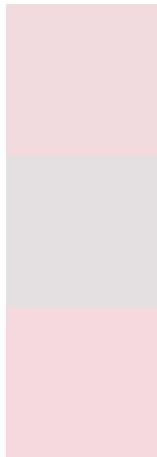
This preview shows how white text looks on a background with the XYZ color 74.9264, 74.6915,

80.2799.

Color Blindness Simulation

Color vision deficiency is a very complex topic, and I could not describe the different causes any better than Wikipedia does, so if you want to learn more, you should check out their [article about color blindness](#).

Dichromacy



Original Color

74.9264, 74.6915, 80.2799

Protanopia

71.9732, 74.7056, 81.8604

Deuteranopia

76.1382, 74.5463, 80.1880



Tritanopia

76.6263, 74.6209, 88.2065

Trichromacy



Original Color

74.9264, 74.6915, 80.2799

Protanomaly

73.1801, 74.9480, 81.1304

Deuteranomaly

75.6989, 74.7036, 80.2415

Tritanomaly

75.9723, 74.7332, 85.2837

Monochromacy



Original Color

74.9264, 74.6915, 80.2799

Achromatopsia

72.2879, 76.0525, 82.8211

Achromatomaly

72.9333, 75.2005, 81.9053

CSS Examples

Text

The CSS property to change the color of the text to XYZ 74.9264, 74.6915, 80.2799 is called "color". The color property can be set on classes, ids or directly on the HTML element.

This example shows how text in the color `rgb(241, 219, 223)` looks like.

```
.text, #text, p{  
    color:rgb(241, 219, 223)  
}
```

If you want to add a text shadow in that color use the text-shadow property, you can generate a text shadow directly with our [CSS Text Shadow Generator](#).

Here you see how black text with a 4 pixel rgb(241, 219, 223) colored shadow looks like.

```
.shadow{ text-shadow: 4px 4px 2px rgb(241, 219, 223) }
```

Border

The CSS property to change the border of an element to XYZ 74.9264, 74.6915, 80.2799 is called "border". The border property can be set on classes, ids or directly on the HTML element.

This example shows the color as border, it can be applied via the CSS property "border" or "border-color".

```
.border, #border, table{ border:4px solid rgb(241, 219, 223) }
```


If only the border color should be changed use the property `border-color`.

```
.border{ border-color:rgb(241, 219, 223) }
```

If you want to add a box shadow in that color use:

Here you see how a box with a 4 pixel `rgb(241, 219, 223)` colored shadow looks like.

```
.boxshadow{ -moz-box-shadow:4px 4px 4px  
4px rgb(241, 219, 223); -webkit-box-  
shadow:4px 4px 4px 4px rgb(241, 219, 223);  
box-shadow:4px 4px 4px 4px rgb(241, 219,  
223) }
```

Background

The CSS property to change the background color of an element to XYZ 74.9264, 74.6915, 80.2799 is called "background". The background property can be set on classes, ids or directly on the HTML element.

```
.background, #background, body{  
background: rgb(241, 219, 223) }
```

If only the background color should be changed can be used:

```
.background{ background-color: rgb(241,  
219, 223) }
```

This example shows the color as background, it is applied via the CSS property "background".

To optimize and compress your CSS code, you can use our [online CSS compressor and optimizer](#) based on csstidy. If you want to create a linear or radial gradient as background or border, check our [CSS Gradient Generator](#).

Hey! You found this booklet interesting? Support Converting Colors with the new Membership Option!

The pro membership hides all ads, plus gives you double the colors in the color bucket, and more awesome pro features!

[Learn more, Memberships starting at \\$2.50/m!](#)

**Follow me
on Twitter!**

@ConvertingColor