

Converting Colors

XYZ(74.5959, 75.5106, 81.5158)

Have a look what the booklet for
XYZ(74.5959, 75.5106, 81.5158)
contains.

XYZ(74.5009, 75.6289, 81.1922)	3
<i>Conversions</i>	4
<i>Details</i>	6
<i>Harmonies</i>	12
<i>Previews</i>	24
<i>Color Blindness Simulation</i>	28
<i>CSS Examples</i>	31

Color

**XYZ(74.5009, 75.6289,
81.1922)**

Conversions

Conversions Part 1

Format	Color
Hex	EDDEE0
RGB	237, 222, 224
RGB Percent	93%, 87%, 88%
CMY	0.0706, 0.1294, 0.1216
CMYK	0.00, 0.06, 0.05, 0.07
HSL	352°, 29%, 90%
HSV	352°, 6%, 93%
XYZ	74.5009, 75.6289, 81.1922
YIQ	226.7130, 8.2980, 3.8020

Conversions

Conversions Part 2

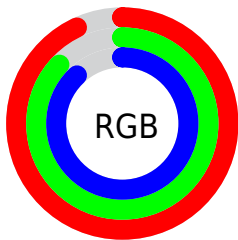
Format	Color
R _Y B	237, 222, 224
Decimal	15589088
CIE Lab	89.69, 5.46, 0.86
CIE LCh	90, 5.531, 8.901
Yxy	75.6289, 0.3221, 0.3269
Android (android.graphics.Color)	4293779168 (0xFFEDDEE0)
YUV	226.7130, -1.3375, 9.0217
Hunter-Lab	86.9649, 0.7285, 5.5211

Details

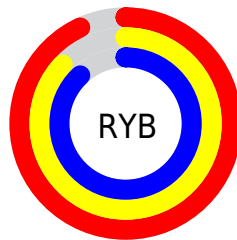
The XYZ color **74.5009, 75.6289, 81.1922** is a light color, and the websafe version is hex **CCCCCC**. A complement of this color would be **75.4067, 82.0981, 90.4736**, and the grayscale version is **72.8122, 76.6041, 83.4219**.

A 20% lighter version of the original color is **95.0500, 100.0000, 108.9000**, and **40.0362, 40.3258, 43.2096** is the 20% darker color. If you saturate the color by 10%, you get **66.0234, 62.8663, 65.4397**, and if you desaturate by 10%, it is **84.2042, 90.3024, 99.0163**.

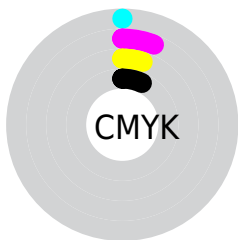
Distribution



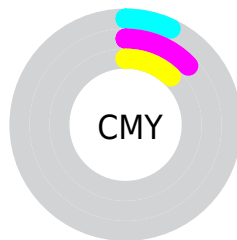
- Red (93%)
- Green (87%)
- Blue (88%)



- Red (93%)
- Yellow (87%)
- Blue (88%)



- Cyan (0%)
- Magenta (6%)
- Yellow (5%)
- Black (7%)



- Cyan (7%)
- Magenta (13%)
- Yellow (12%)

Brightness & Saturation Gradients

These gradients show how the XYZ color 74.5009, 75.6289, 81.1922 changes by changing the brightness by 10 percent. The first figure shows a shift by +10% for each color and the second figure -10%.

Similar to the brightness gradients but the following saturation gradients show a change of the XYZ color 74.5009, 75.6289, 81.1922 by changing the saturation by 10% instead.

74.5009, 75.6289,
81.1922

74.5009, 75.6289,
81.1922

465.2240,
480.0764, 518.7539

55.4968, 56.1283,
60.1680

124.5973,
127.2022, 136.8671

40.0351, 40.3058,
43.1279

156.4204,
160.0437, 172.3549

27.7502, 27.7770,
29.6533

193.2471,
198.1008, 213.5009

18.2769, 18.1576,
19.3258

235.4429,
241.7581, 260.7237

11.2499, 11.0632,
11.7267

283.3732,
291.3999, 314.4419

6.3037, 6.1094,
6.4376

337.4032,

3.0730, 2.9117,

347.4107, 375.0740

3.0399

397.8984,
410.1747, 443.0385

■ 1.1925, 1.0858,
1.1150

■ 0.1004, 0.0000,
0.0000

■ 74.5009, 75.6289,
81.1922

■ 74.5009, 75.6289,
81.1922

■ 66.0234, 62.8663,
65.4397

■ 84.2042, 90.3024,
99.0163

■ 58.7167, 51.9265,
51.6788

■ 88.7355, 96.7448,
108.6045

■ 52.5309, 42.7291,
39.8314

■ 47.4103, 35.1841,
29.8123

■ 43.2941, 29.1932,
21.5301

■ 40.1155, 24.6478,
14.8852

■ 37.7995, 21.4251,
9.7679

■ 36.2590, 19.3821,
6.0547

■ 35.3877, 18.3408,
3.6023

Harmonies

Analogous

The Analogous color harmony consists of three colors that are next to each other on the color wheel.



74.3535, 75.6289, 85.0759



74.5009, 75.6289, 81.1922



73.9399, 75.6289, 77.7273

Triad

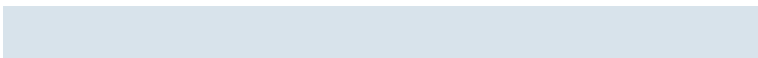
The Triadic color harmony groups three colors that are evenly spaced from another and form a triangle on the color wheel.



74.5009, 75.6289, 81.1922



70.2513, 75.6289, 76.6482



70.9446, 75.6289, 89.5429

Complementary

The Complementary color scheme is a pair of colors which are on the opposite of each other on the color wheel.



74.5009, 75.6289, 81.1922



75.4067, 82.0981, 90.4736

Split Complementary

Split-complementary colors differ from the complementary color scheme. The scheme consists of three colors, the original color and two neighbors of the complement color.



69.8646, 75.6289, 87.1463



74.5009, 75.6289, 81.1922



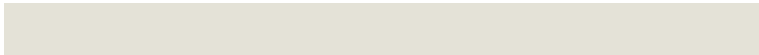
69.4678, 75.6289, 79.6771

Square

The Square scheme is like the rectangle color scheme, but the four colors are evenly spaced on the color wheel.



74.5009, 75.6289, 81.1922



71.4786, 75.6289, 75.1587



69.3272, 75.6289, 83.5127



72.2889, 75.6289, 89.9796

Rectangle

The Rectangle color scheme consists of four colors that form a rectangle on the color wheel.



74.5009, 75.6289, 81.1922



73.2439, 75.6289, 76.0916



69.3272, 75.6289, 83.5127



70.5391, 75.6289, 88.9362

Sweetspot

The Sweet Spot groups the original color and five complimentary colors.



74.5030, 75.6322, 81.1938



92.7408, 96.5076, 104.6589



75.6706, 76.0225, 90.8074



19.8745, 20.6932, 22.4458



0.0000, 0.0000, 0.0000



20.3446, 21.4041, 23.3091

Same Dimension

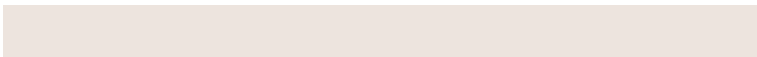
The Same Dimension uses a secret algorithm to generate beautiful new colors.



74.5030, 75.6322, 81.1938



86.1661, 86.5807, 92.5327



75.7182, 78.4933, 80.2711



15.1471, 15.0867, 16.0598



19.2337, 9.8962, 1.7659



1.5363, 0.7875, 0.2757

Inverse Universe

The Inverse Universe completely reimagines the original color for something new.



74.5030, 75.6322, 81.1938



86.1661, 86.5807, 92.5327



74.1291, 79.0788, 91.4785



15.1471, 15.0867, 16.0598



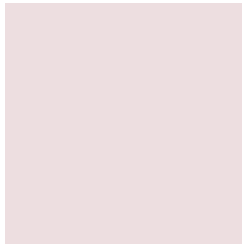
19.2337, 9.8962, 1.7659



1.5363, 0.7875, 0.2757

Previews

White Background



This preview shows how the XYZ color 74.5009, 75.6289, 81.1922 looks on a white background.

Color Contrast Check

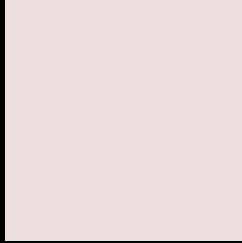
Large Text (above 18pt) WCAG AA × Fail

Any Text WCAG AA × Fail

Large Text (above 18pt) WCAG AAA × Fail

Any Text WCAG AAA × Fail

Black Background



This preview shows how the XYZ color 74.5009, 75.6289, 81.1922 looks on a black background.

Color Contrast Check

Large Text (above 18pt) WCAG AA ✓ Pass

Any Text WCAG AA ✓ Pass

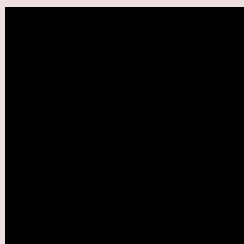
Large Text (above 18pt) WCAG AAA ✓ Pass

Any Text WCAG AAA ✓ Pass

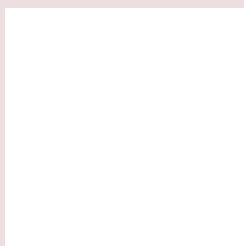
If you want to check with other color combinations, try the [Color Contrast Checker](#).

XYZ 74.5009, 75.6289, 81.1922

Background



This preview shows how black text looks on a background with the XYZ color 74.5009, 75.6289, 81.1922.

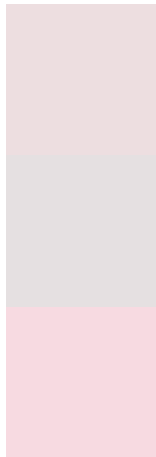


This preview shows how white text looks on a background with the XYZ color 74.5009, 75.6289,

Color Blindness Simulation

Color vision deficiency is a very complex topic, and I could not describe the different causes any better than Wikipedia does, so if you want to learn more, you should check out their [article about color blindness](#).

Dichromacy



Original Color

74.5009, 75.6289, 81.1922

Protanopia

72.5594, 75.4056, 81.9646

Deuteranopia

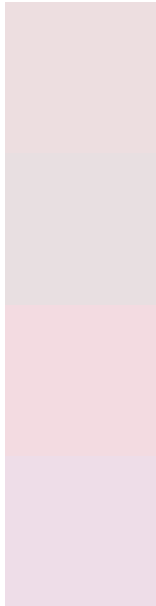
77.0198, 75.3532, 81.7194



Tritanopia

76.4759, 75.6515, 90.6923

Trichromacy



Original Color

74.5009, 75.6289, 81.1922

Protanomaly

73.2570, 75.3674, 81.9205

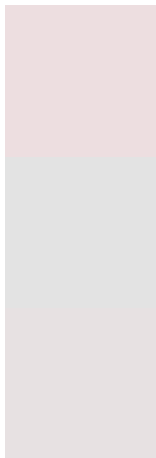
Deuteranomaly

75.8843, 75.1540, 81.7408

Tritanomaly

75.6818, 75.7162, 86.9698

Monochromacy



Original Color

74.5009, 75.6289, 81.1922

Achromatopsia

73.0128, 76.8151, 83.6517

Achromatomaly

73.6077, 76.3303, 82.8052

CSS Examples

Text

The CSS property to change the color of the text to XYZ 74.5009, 75.6289, 81.1922 is called "color". The color property can be set on classes, ids or directly on the HTML element.

This example shows how text in the color rgb(237, 222, 224) looks like.

```
.text, #text, p{  
    color:rgb(237, 222, 224)  
}
```

If you want to add a text shadow in that color use the text-shadow property, you can generate a text shadow directly with our [CSS Text Shadow Generator](#).

Here you see how black text with a 4 pixel rgb(237, 222, 224) colored shadow looks like.

```
.shadow{ text-shadow: 4px 4px 2px rgb(237, 222, 224) }
```

Border

The CSS property to change the border of an element to XYZ 74.5009, 75.6289, 81.1922 is called "border". The border property can be set on classes, ids or directly on the HTML element.

This example shows the color as border, it can be applied via the CSS property "border" or "border-color".

```
.border, #border, table{ border:4px solid rgb(237, 222, 224) }
```


If only the border color should be changed use the property `border-color`.

```
.border{ border-color:rgb(237, 222, 224) }
```

If you want to add a box shadow in that color use:

Here you see how a box with a 4 pixel `rgb(237, 222, 224)` colored shadow looks like.

```
.boxshadow{ -moz-box-shadow:4px 4px 4px  
4px rgb(237, 222, 224); -webkit-box-  
shadow:4px 4px 4px 4px rgb(237, 222, 224);  
box-shadow:4px 4px 4px 4px rgb(237, 222,  
224) }
```

Background

The CSS property to change the background color of an element to XYZ 74.5009, 75.6289, 81.1922 is called "background". The background property can be set on classes, ids or directly on the HTML element.

```
.background, #background, body{  
background: rgb(237, 222, 224) }
```

If only the background color should be changed can be used:

```
.background{ background-color: rgb(237,  
222, 224) }
```

This example shows the color as background, it is applied via the CSS property "background".

To optimize and compress your CSS code, you can use our [online CSS compressor and optimizer](#) based on csstidy. If you want to create a linear or radial gradient as background or border, check our [CSS Gradient Generator](#).

Hey! You found this booklet interesting? Support Converting Colors with the new Membership Option!

The pro membership hides all ads, plus gives you double the colors in the color bucket, and more awesome pro features!

[Learn more, Memberships starting at \\$2.50/m!](#)

**Follow me
on Twitter!**

@ConvertingColor