

Converting Colors

XYZ(74.6394, 66.2043, 80.4377)

Have a look what the booklet for
XYZ(74.6394, 66.2043, 80.4377)
contains.

XYZ(74.7074, 66.2308, 80.7978)	3
<i>Conversions</i>	4
<i>Details</i>	6
<i>Harmonies</i>	12
<i>Previews</i>	24
<i>Color Blindness Simulation</i>	28
<i>CSS Examples</i>	31

Color

**XYZ(74.7074, 66.2308,
80.7978)**

Conversions

Conversions Part 1

Format	Color
Hex	FFC4E2
RGB	255, 196, 226
RGB Percent	100%, 77%, 89%
CMY	0.0000, 0.2313, 0.1137
CMYK	0.00, 0.23, 0.11, 0.00
HSL	329°, 100%, 88%
HSV	329°, 23%, 100%
XYZ	74.7074, 66.2308, 80.7978
YIQ	217.0610, 25.5340, 21.8380

Conversions

Conversions Part 2

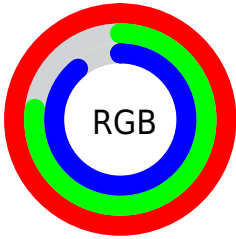
Format	Color
R _Y B	255, 196, 226
Decimal	16762082
CIE Lab	85.11, 25.60, -6.73
CIE LCh	85, 26.471, 345.262
Yxy	66.2308, 0.3369, 0.2987
Android (android.graphics.Color)	4294952162 (0xFFFFC4E2)
YUV	217.0610, 4.4069, 33.2725
Hunter-Lab	81.3823, 21.4405, -1.8965

Details

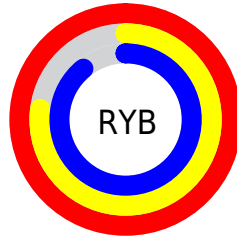
The XYZ color **74.7074, 66.2308, 80.7978** is a light color, and the websafe version is hex **FFCCFF**. A complement of this color would be **72.1177, 88.6930, 84.5559**, and the grayscale version is **65.9550, 69.3898, 75.5655**.

A 20% lighter version of the original color is **94.4153, 98.7306, 108.6884**, and **40.3124, 34.2920, 43.0224** is the 20% darker color. If you saturate the color by 10%, you get **67.7793, 55.0273, 70.3107**, and if you desaturate by 10%, it is **82.7417, 79.4450, 92.2758**.

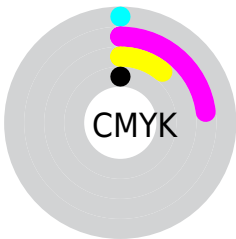
Distribution



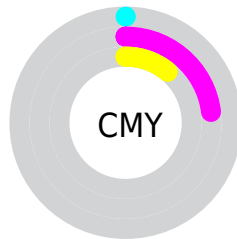
- Red (100%)
- Green (77%)
- Blue (89%)



- Red (100%)
- Yellow (77%)
- Blue (89%)



- Cyan (0%)
- Magenta (23%)
- Yellow (11%)
- Black (0%)



- Cyan (0%)
- Magenta (23%)
- Yellow (11%)

Brightness & Saturation Gradients

These gradients show how the XYZ color 74.7074, 66.2308, 80.7978 changes by changing the brightness by 10 percent. The first figure shows a shift by +10% for each color and the second figure -10%.

Similar to the brightness gradients but the following saturation gradients show a change of the XYZ color 74.7074, 66.2308, 80.7978 by changing the saturation by 10% instead.

74.7074, 66.2308,
80.7978

74.7074, 66.2308,
80.7978

465.9240,
447.2018, 517.3949

55.6665, 48.4598,
59.8451

124.8882,
113.8175, 136.3083

40.1716, 34.1911,
42.8693

156.7589,
144.4020, 171.7032

27.8572, 23.0405,
29.4519

193.6369,
180.0265, 212.7492

18.3579, 14.6234,
19.1744

235.8875,
221.0753, 259.8648

11.3085, 8.5555,
11.6183

283.8762,
267.9328, 313.4687

6.3436, 4.4524,
6.3650

337.9683,

3.0977, 1.9297,

320.9835, 373.9793

2.9959

398.5291,
380.6117, 441.8152

■ 1.2056, 0.5662,
1.0925

■ 0.1108, 0.0000,
0.0000

■ 74.7074, 66.2308,
80.7978

■ 74.7074, 66.2308,
80.7978

■ 67.7793, 55.0273,
70.3107

■ 82.7417, 79.4450,
92.2758

■ 61.9009, 45.7264,
60.7800

■ 91.9263, 94.7546,
104.7695

■ 57.0172, 38.2224,
52.1744

95.0500, 100.0000,
108.9000

■ 53.0661, 32.3956,
44.4592

■ 49.9782, 28.1118,
37.5967

■ 47.6733, 25.2158,
31.5448

■ 46.0546, 23.5193,
26.2555

■ 45.2461, 22.8624,
23.0257

Harmonies

Analogous

The Analogous color harmony consists of three colors that are next to each other on the color wheel.



71.4545, 66.2308, 97.7947



74.7074, 66.2308, 80.7978



74.6769, 66.2308, 63.8079

Triad

The Triadic color harmony groups three colors that are evenly spaced from another and form a triangle on the color wheel.



74.7074, 66.2308, 80.7978



59.9791, 66.2308, 44.8388



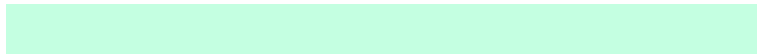
55.2172, 66.2308, 98.0554

Complementary

The Complementary color scheme is a pair of colors which are on the opposite of each other on the color wheel.



74.7074, 66.2308, 80.7978



72.1177, 88.6930, 84.5559

Split Complementary

Split-complementary colors differ from the complementary color scheme. The scheme consists of three colors, the original color and two neighbors of the complement color.



52.5206, 66.2308, 81.1115



74.7074, 66.2308, 80.7978



55.1493, 66.2308, 51.3757

Square

The Square scheme is like the rectangle color scheme, but the four colors are evenly spaced on the color wheel.



74.7074, 66.2308, 80.7978



65.9136, 66.2308, 44.7821



52.4965, 66.2308, 64.0760



60.0773, 66.2308, 108.7761

Rectangle

The Rectangle color scheme consists of four colors that form a rectangle on the color wheel.



74.7074, 66.2308, 80.7978



72.7880, 66.2308, 54.7634



52.4965, 66.2308, 64.0760



54.0416, 66.2308, 92.7897

Sweetspot

The Sweet Spot groups the original color and five complimentary colors.



74.7089, 66.2336, 80.7992



88.2369, 88.5830, 99.8182



68.6931, 62.6330, 103.0766



18.7664, 18.7603, 21.2027



0.0000, 0.0000, 0.0000



20.3446, 21.4041, 23.3091

Same Dimension

The Same Dimension uses a secret algorithm to generate beautiful new colors.



74.7089, 66.2336, 80.7992



71.2029, 60.5372, 75.5749



71.0580, 64.7732, 61.5741



18.3948, 18.1412, 20.6962



23.7177, 11.9764, 12.4297



2.3645, 1.1882, 1.5009

Inverse Universe

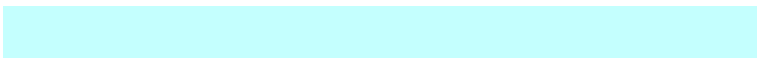
The Inverse Universe completely reimagines the original color for something new.



74.7089, 66.2336, 80.7992



71.2029, 60.5372, 75.5749



76.4186, 90.4134, 107.2038



18.3948, 18.1412, 20.6962



23.7177, 11.9764, 12.4297



2.3645, 1.1882, 1.5009

Previews

White Background



This preview shows how the XYZ color 74.7074, 66.2308, 80.7978 looks on a white background.

Color Contrast Check

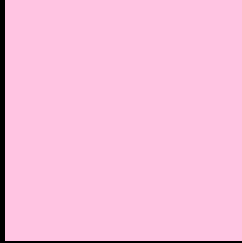
Large Text (above 18pt) WCAG AA × Fail

Any Text WCAG AA × Fail

Large Text (above 18pt) WCAG AAA × Fail

Any Text WCAG AAA × Fail

Black Background



This preview shows how the XYZ color 74.7074, 66.2308, 80.7978 looks on a black background.

Color Contrast Check

Large Text (above 18pt) WCAG AA ✓ Pass

Any Text WCAG AA ✓ Pass

Large Text (above 18pt) WCAG AAA ✓ Pass

Any Text WCAG AAA ✓ Pass

If you want to check with other color combinations, try the [Color Contrast Checker](#).

XYZ 74.7074, 66.2308, 80.7978

Background



This preview shows how black text looks on a background with the XYZ color 74.7074, 66.2308, 80.7978.



This preview shows how white text looks on a background with the XYZ color 74.7074, 66.2308,

Color Blindness Simulation

Color vision deficiency is a very complex topic, and I could not describe the different causes any better than Wikipedia does, so if you want to learn more, you should check out their [article about color blindness](#).

Dichromacy



Original Color

74.7074, 66.2308, 80.7978

Protanopia

65.0129, 66.3463, 88.7364

Deuteranopia

68.0805, 66.6655, 79.8005



Tritanopia

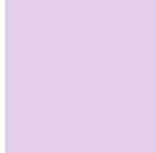
72.7123, 66.0749, 71.8722

Trichromacy



Original Color

74.7074, 66.2308, 80.7978



Protanomaly

68.0008, 66.1376, 85.5257



Deuteranomaly

70.2064, 66.3253, 80.3359



Tritanomaly

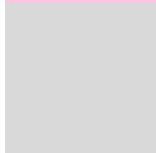
73.4942, 66.0653, 75.2080

Monochromacy



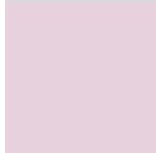
Original Color

74.7074, 66.2308, 80.7978



Achromatopsia

65.9525, 69.3872, 75.5626



Achromatomaly

68.6737, 67.7572, 77.1691

CSS Examples

Text

The CSS property to change the color of the text to XYZ 74.7074, 66.2308, 80.7978 is called "color". The color property can be set on classes, ids or directly on the HTML element.

This example shows how text in the color `rgb(255, 196, 226)` looks like.

```
.text, #text, p{  
    color:rgb(255, 196, 226)  
}
```

If you want to add a text shadow in that color use the text-shadow property, you can generate a text shadow directly with our [CSS Text Shadow Generator](#).

Here you see how black text with a 4 pixel rgb(255, 196, 226) colored shadow looks like.

```
.shadow{ text-shadow: 4px 4px 2px rgb(255, 196, 226) }
```

Border

The CSS property to change the border of an element to XYZ 74.7074, 66.2308, 80.7978 is called "border". The border property can be set on classes, ids or directly on the HTML element.

This example shows the color as border, it can be applied via the CSS property "border" or "border-color".

```
.border, #border, table{ border:4px solid rgb(255, 196, 226) }
```


If only the border color should be changed use the property `border-color`.

```
.border{ border-color:rgb(255, 196, 226) }
```

If you want to add a box shadow in that color use:

Here you see how a box with a 4 pixel `rgb(255, 196, 226)` colored shadow looks like.

```
.boxshadow{ -moz-box-shadow:4px 4px 4px 4px rgb(255, 196, 226); -webkit-box-shadow:4px 4px 4px 4px rgb(255, 196, 226); box-shadow:4px 4px 4px 4px rgb(255, 196, 226) }
```

Background

The CSS property to change the background color of an element to XYZ 74.7074, 66.2308, 80.7978 is called "background". The background property can be set on classes, ids or directly on the HTML element.

```
.background, #background, body{  
background: rgb(255, 196, 226) }
```

If only the background color should be changed can be used:

```
.background{ background-color: rgb(255,  
196, 226) }
```

This example shows the color as background, it is applied via the CSS property "background".

To optimize and compress your CSS code, you can use our [online CSS compressor and optimizer](#) based on csstidy. If you want to create a linear or radial gradient as background or border, check our [CSS Gradient Generator](#).

Hey! You found this booklet interesting? Support Converting Colors with the new Membership Option!

The pro membership hides all ads, plus gives you double the colors in the color bucket, and more awesome pro features!

[Learn more, Memberships starting at \\$2.50/m!](#)

**Follow me
on Twitter!**

@ConvertingColor