

Converting Colors

XYZ(74.7987, 66.1735, 95.5086)

Have a look what the booklet for
XYZ(74.7987, 66.1735, 95.5086)
contains.

XYZ(74.8055, 66.2992, 95.2406)	3
<i>Conversions</i>	4
<i>Details</i>	6
<i>Harmonies</i>	12
<i>Previews</i>	24
<i>Color Blindness Simulation</i>	28
<i>CSS Examples</i>	31

Color

**XYZ(74.8055, 66.2992,
95.2406)**

Conversions

Conversions Part 1

Format	Color
Hex	F7C5F5
RGB	247, 197, 245
RGB Percent	97%, 77%, 96%
CMY	0.0314, 0.2274, 0.0392
CMYK	0.00, 0.20, 0.01, 0.03
HSL	302°, 76%, 87%
HSV	302°, 20%, 97%
XYZ	74.8055, 66.2992, 95.2406
YIQ	217.4220, 14.3920, 25.5280

Conversions

Conversions Part 2

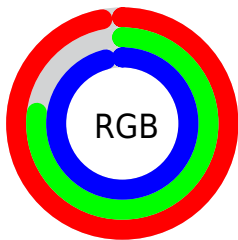
Format	Color
R _Y B	247, 197, 245
Decimal	16238069
CIE Lab	85.15, 25.65, -16.88
CIE LCh	85, 30.706, 326.658
Yxy	66.2992, 0.3165, 0.2805
Android (android.graphics.Color)	4294428149 (0xFFF7C5F5)
YUV	217.4220, 13.5960, 25.9399
Hunter-Lab	81.4243, 21.4975, -12.3534

Details

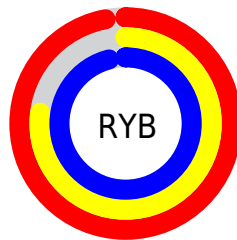
The XYZ color **74.8055, 66.2992, 95.2406** is a light color, and the websafe version is hex **FFCCFF**. A complement of this color would be **66.5982, 82.5175, 66.4538**, and the grayscale version is **66.1472, 69.5920, 75.7857**.

A 20% lighter version of the original color is **94.7318, 99.3636, 108.7939**, and **40.2430, 34.2662, 52.6371** is the 20% darker color. If you saturate the color by 10%, you get **69.5002, 55.9283, 92.7304**, and if you desaturate by 10%, it is **81.0345, 78.5140, 98.0641**.

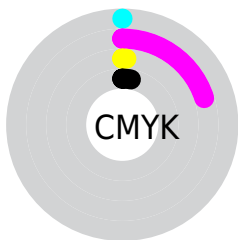
Distribution



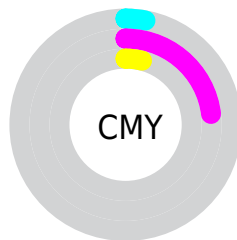
- Red (97%)
- Green (77%)
- Blue (96%)



- Red (97%)
- Yellow (77%)
- Blue (96%)



- Cyan (0%)
- Magenta (20%)
- Yellow (1%)
- Black (3%)



- Cyan (3%)
- Magenta (23%)
- Yellow (4%)

Brightness & Saturation Gradients

These gradients show how the XYZ color 74.8055, 66.2992, 95.2406 changes by changing the brightness by 10 percent. The first figure shows a shift by +10% for each color and the second figure -10%.

Similar to the brightness gradients but the following saturation gradients show a change of the XYZ color 74.8055, 66.2992, 95.2406 by changing the saturation by 10% instead.

74.8055, 66.2992,
95.2406

74.8055, 66.2992,
95.2406

466.2563,
447.4462, 565.9389

55.7472, 48.5153,
71.7372

125.0264,
113.9157, 156.5954

40.2365, 34.2352,
52.4585

156.9197,
144.5170, 195.2839

27.9080, 23.0743,
36.9859

193.8219,
180.1597, 239.8713

18.3964, 14.6484,
24.9009

236.0986,
221.2280, 290.7759

11.3364, 8.5730,
15.7849

284.1150,
268.1065, 348.4165

6.3625, 4.4637,
9.2194

338.2365,

3.1095, 1.9362,

321.1794, 413.2115

4.7858

398.8285,
380.8311, 485.5795

■ 1.2119, 0.5700,
2.0656

■ 0.1158, 0.0000,
0.5952

■ 74.8055, 66.2992,
95.2406

■ 74.8055, 66.2992,
95.2406

■ 69.5002, 55.9283,
92.7304

■ 81.0345, 78.5140,
98.0641

■ 65.0678, 47.3031,
90.5145

■ 88.2228, 92.6472,
101.2107

■ 61.4620, 40.3298,
88.5780

■ 91.0564, 98.0697,
102.9097

■ 58.6296, 34.9019,
86.9033

■ 91.2102, 98.1312,
103.7193

56.5113, 30.9010,
85.4705

91.3648, 98.1930,
104.5333

55.0391, 28.1910,
84.2571

91.5201, 98.2552,
105.3515

54.1320, 26.6100,
83.2360

91.6763, 98.3177,
106.1740

53.6618, 25.8958,
82.3817

91.8334, 98.3805,
107.0008

91.9912, 98.4436,
107.8319

Harmonies

Analogous

The Analogous color harmony consists of three colors that are next to each other on the color wheel.



69.1798, 66.2992, 111.9101



74.8055, 66.2992, 95.2406



77.2635, 66.2992, 74.4344

Triad

The Triadic color harmony groups three colors that are evenly spaced from another and form a triangle on the color wheel.



74.8055, 66.2992, 95.2406



63.7948, 66.2992, 40.4212



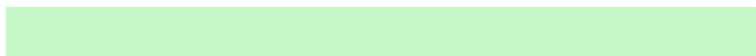
51.8496, 66.2992, 90.6837

Complementary

The Complementary color scheme is a pair of colors which are on the opposite of each other on the color wheel.



74.8055, 66.2992, 95.2406



66.5982, 82.5175, 66.4538

Split Complementary

Split-complementary colors differ from the complementary color scheme. The scheme consists of three colors, the original color and two neighbors of the complement color.



50.6363, 66.2992, 69.9883



74.8055, 66.2992, 95.2406



57.2285, 66.2992, 43.1917

Square

The Square scheme is like the rectangle color scheme, but the four colors are evenly spaced on the color wheel.



74.8055, 66.2992, 95.2406



70.6204, 66.2992, 44.7894



52.5342, 66.2992, 53.1930



55.9770, 66.2992, 108.9589

Rectangle

The Rectangle color scheme consists of four colors that form a rectangle on the color wheel.



74.8055, 66.2992, 95.2406



76.6510, 66.2992, 61.8004



52.5342, 66.2992, 53.1930



51.1011, 66.2992, 83.6801

Sweetspot

The Sweet Spot groups the original color and five complimentary colors.



74.8075, 66.3021, 95.2420



90.2634, 90.5843, 106.8190



60.2225, 58.7478, 96.1625



19.2135, 19.1793, 22.8168



0.0000, 0.0000, 0.0000



20.3446, 21.4041, 23.3091

Same Dimension

The Same Dimension uses a secret algorithm to generate beautiful new colors.



74.8075, 66.3021, 95.2420



78.1455, 66.8179, 101.3325



71.2888, 64.8946, 76.7130



17.1833, 16.7562, 20.7118



28.3927, 13.7005, 43.6378



2.5042, 1.2076, 3.8815

Inverse Universe

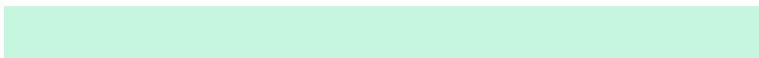
The Inverse Universe completely reimagines the original color for something new.



74.8075, 66.3021, 95.2420



78.1455, 66.8179, 101.3325



69.6985, 83.7576, 82.7800



17.1833, 16.7562, 20.7118



28.3927, 13.7005, 43.6378



2.5042, 1.2076, 3.8815

Previews

White Background



This preview shows how the XYZ color 74.8055, 66.2992, 95.2406 looks on a white background.

Color Contrast Check

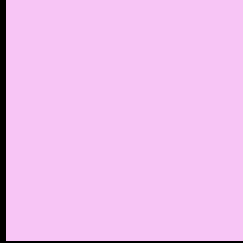
Large Text (above 18pt) WCAG AA × Fail

Any Text WCAG AA × Fail

Large Text (above 18pt) WCAG AAA × Fail

Any Text WCAG AAA × Fail

Black Background



This preview shows how the XYZ color 74.8055, 66.2992, 95.2406 looks on a black background.

Color Contrast Check

Large Text (above 18pt) WCAG AA ✓ Pass

Any Text WCAG AA ✓ Pass

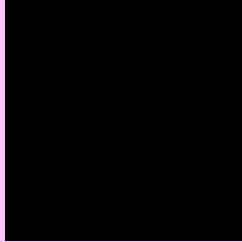
Large Text (above 18pt) WCAG AAA ✓ Pass

Any Text WCAG AAA ✓ Pass

If you want to check with other color combinations, try the [Color Contrast Checker](#).

XYZ 74.8055, 66.2992, 95.2406

Background



This preview shows how black text looks on a background with the XYZ color 74.8055, 66.2992, 95.2406.



This preview shows how white text looks on a background with the XYZ color 74.8055, 66.2992,

Color Blindness Simulation

Color vision deficiency is a very complex topic, and I could not describe the different causes any better than Wikipedia does, so if you want to learn more, you should check out their [article about color blindness](#).

Dichromacy



Original Color

74.8055, 66.2992, 95.2406

Protanopia

66.0855, 66.5817, 103.1344

Deuteranopia

67.9470, 66.6429, 94.0762



Tritanopia

70.7376, 66.3577, 75.4097

Trichromacy



Original Color

74.8055, 66.2992, 95.2406



Protanomaly

68.9991, 66.3233, 100.4318



Deuteranomaly

70.2351, 66.3754, 94.6979



Tritanomaly

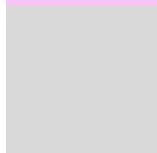
71.9661, 66.1431, 82.3727

Monochromacy



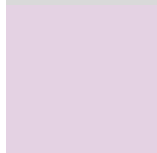
Original Color

74.8055, 66.2992, 95.2406



Achromatopsia

65.9525, 69.3872, 75.5626



Achromatomaly

68.9066, 68.1332, 82.1923

CSS Examples

Text

The CSS property to change the color of the text to XYZ 74.8055, 66.2992, 95.2406 is called "color". The color property can be set on classes, ids or directly on the HTML element.

This example shows how text in the color `rgb(247, 197, 245)` looks like.

```
.text, #text, p{  
    color:rgb(247, 197, 245)  
}
```

If you want to add a text shadow in that color use the text-shadow property, you can generate a text shadow directly with our [CSS Text Shadow Generator](#).

Here you see how black text with a 4 pixel rgb(247, 197, 245) colored shadow looks like.

```
.shadow{ text-shadow: 4px 4px 2px rgb(247, 197, 245) }
```

Border

The CSS property to change the border of an element to XYZ 74.8055, 66.2992, 95.2406 is called "border". The border property can be set on classes, ids or directly on the HTML element.

This example shows the color as border, it can be applied via the CSS property "border" or "border-color".

```
.border, #border, table{ border:4px solid rgb(247, 197, 245) }
```


If only the border color should be changed use the property `border-color`.

```
.border{ border-color:rgb(247, 197, 245) }
```

If you want to add a box shadow in that color use:

Here you see how a box with a 4 pixel `rgb(247, 197, 245)` colored shadow looks like.

```
.boxshadow{ -moz-box-shadow:4px 4px 4px  
4px rgb(247, 197, 245); -webkit-box-  
shadow:4px 4px 4px 4px rgb(247, 197, 245);  
box-shadow:4px 4px 4px 4px rgb(247, 197,  
245) }
```

Background

The CSS property to change the background color of an element to XYZ 74.8055, 66.2992, 95.2406 is called "background". The background property can be set on classes, ids or directly on the HTML element.

```
.background, #background, body{  
background: rgb(247, 197, 245) }
```

If only the background color should be changed can be used:

```
.background{ background-color: rgb(247,  
197, 245) }
```

This example shows the color as background, it is applied via the CSS property "background".

To optimize and compress your CSS code, you can use our [online CSS compressor and optimizer](#) based on csstidy. If you want to create a linear or radial gradient as background or border, check our [CSS Gradient Generator](#).

Hey! You found this booklet interesting? Support Converting Colors with the new Membership Option!

The pro membership hides all ads, plus gives you double the colors in the color bucket, and more awesome pro features!

[Learn more, Memberships starting at \\$2.50/m!](#)

**Follow me
on Twitter!**

@ConvertingColor