

Converting Colors

XYZ(74.8351, 73.4139, 83.6249)

Have a look what the booklet for
XYZ(74.8351, 73.4139, 83.6249)
contains.

XYZ(74.8351, 73.4139, 83.6249)	3
<i>Conversions</i>	4
<i>Details</i>	6
<i>Harmonies</i>	12
<i>Previews</i>	24
<i>Color Blindness Simulation</i>	28
<i>CSS Examples</i>	31

Color

**XYZ(74.8351, 73.4139,
83.6249)**

Conversions

Conversions Part 1

Format	Color
Hex	F1D8E4
RGB	241, 216, 228
RGB Percent	95%, 85%, 89%
CMY	0.0549, 0.1529, 0.1059
CMYK	0.00, 0.10, 0.05, 0.05
HSL	331°, 47%, 90%
HSV	331°, 10%, 95%
XYZ	74.8351, 73.4139, 83.6249
YIQ	224.8430, 11.0480, 9.0320

Conversions

Conversions Part 2

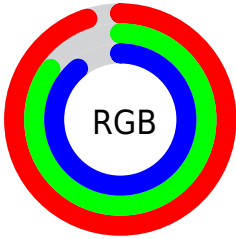
Format	Color
R _Y B	241, 216, 228
Decimal	15849700
CIE Lab	88.64, 10.64, -2.73
CIE LCh	89, 10.990, 345.593
Yxy	73.4139, 0.3227, 0.3166
Android (android.graphics.Color)	4294039780 (0xFFFF1D8E4)
YUV	224.8430, 1.5564, 14.1697
Hunter-Lab	85.6819, 5.9596, 2.1107

Details

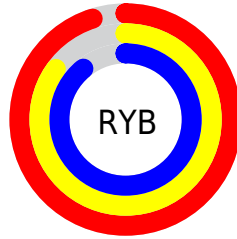
The XYZ color **74.8351, 73.4139, 83.6249** is a light color, and the websafe version is hex **FFCCCC**. A complement of this color would be **73.9199, 83.1686, 86.2899**, and the grayscale version is **71.4406, 75.1611, 81.8505**.

A 20% lighter version of the original color is **95.0500, 100.0000, 108.9000**, and **40.2953, 38.8212, 44.9046** is the 20% darker color. If you saturate the color by 10%, you get **67.4309, 61.2891, 72.8814**, and if you desaturate by 10%, it is **83.2752, 87.4066, 95.3379**.

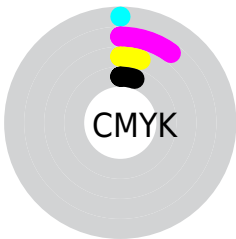
Distribution



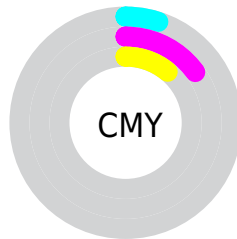
- Red (95%)
- Green (85%)
- Blue (89%)



- Red (95%)
- Yellow (85%)
- Blue (89%)



- Cyan (0%)
- Magenta (10%)
- Yellow (5%)
- Black (5%)



- Cyan (5%)
- Magenta (15%)
- Yellow (11%)

Brightness & Saturation Gradients

These gradients show how the XYZ color 74.8351, 73.4139, 83.6249 changes by changing the brightness by 10 percent. The first figure shows a shift by +10% for each color and the second figure -10%.

Similar to the brightness gradients but the following saturation gradients show a change of the XYZ color 74.8351, 73.4139, 83.6249 by changing the saturation by 10% instead.

74.8351, 73.4139,
83.6249

74.8351, 73.4139,
83.6249

466.3565,
472.4481, 527.0922

55.7715, 54.3145,
62.1622

125.0681,
124.0646, 140.3074

40.2560, 38.8531,
44.7271

156.9682,
156.3847, 176.3643

27.9233, 26.6455,
30.9012

193.8778,
193.8804, 218.1229

18.4080, 17.3072,
20.2658

236.1623,
236.9363, 266.0019

11.3448, 10.4537,
12.4024

284.1871,
285.9365, 320.4198

6.3682, 5.7008,
6.8925

338.3175,

3.1130, 2.6640,

341.2657, 381.7952

3.3175

398.9188,
403.3080, 450.5465

■ 1.2138, 0.9590,
1.2590

■ 0.1172, 0.0000,
0.0278

■ 74.8351, 73.4139,
83.6249

■ 74.8351, 73.4139,
83.6249

■ 67.4309, 61.2891,
72.8814

■ 83.2752, 87.4066,
95.3379

■ 61.0144, 50.9431,
63.0755

■ 89.7768, 97.3173,
107.0390

■ 55.5428, 42.2935,
54.1805

■ 90.0861, 97.4410,
108.6677

■ 50.9675, 35.2481,
46.1660

■ 47.2357, 29.7054,
38.9998

■ 44.2882, 25.5524,
32.6472

■ 42.0579, 22.6597,
27.0699

■ 40.4651, 20.8734,
22.2250

■ 39.4088, 19.9541,
18.1943

Harmonies

Analogous

The Analogous color harmony consists of three colors that are next to each other on the color wheel.



73.4851, 73.4139, 90.5982



74.8351, 73.4139, 83.6249



74.8065, 73.4139, 76.0728

Triad

The Triadic color harmony groups three colors that are evenly spaced from another and form a triangle on the color wheel.



74.8351, 73.4139, 83.6249



68.4157, 73.4139, 66.6753



66.2693, 73.4139, 90.8309

Complementary

The Complementary color scheme is a pair of colors which are on the opposite of each other on the color wheel.



74.8351, 73.4139, 83.6249



73.9199, 83.1686, 86.2899

Split Complementary

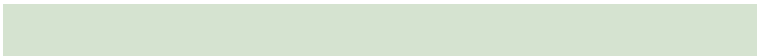
Split-complementary colors differ from the complementary color scheme. The scheme consists of three colors, the original color and two neighbors of the complement color.



64.9795, 73.4139, 83.9263



74.8351, 73.4139, 83.6249



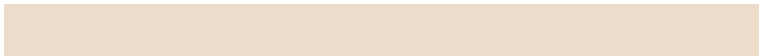
66.1972, 73.4139, 70.1436

Square

The Square scheme is like the rectangle color scheme, but the four colors are evenly spaced on the color wheel.



74.8351, 73.4139, 83.6249



71.0544, 73.4139, 66.6060



64.9535, 73.4139, 76.3558



68.5164, 73.4139, 94.9338

Rectangle

The Rectangle color scheme consists of four colors that form a rectangle on the color wheel.



74.8351, 73.4139, 83.6249



74.0078, 73.4139, 71.7315



64.9535, 73.4139, 76.3558



65.7119, 73.4139, 88.7418

Sweetspot

The Sweet Spot groups the original color and five complimentary colors.



74.8372, 73.4171, 83.6265



92.0239, 94.9622, 104.7638



72.7223, 72.1104, 93.3060



19.5277, 20.0448, 22.1908



0.0000, 0.0000, 0.0000



20.3446, 21.4041, 23.3091

Same Dimension

The Same Dimension uses a secret algorithm to generate beautiful new colors.



74.8372, 73.4171, 83.6265



83.5959, 81.0236, 92.9608



73.3357, 72.9875, 75.1923



16.0888, 15.8852, 18.0237



21.4376, 10.8475, 10.2210



1.8334, 0.9224, 1.1137

Inverse Universe

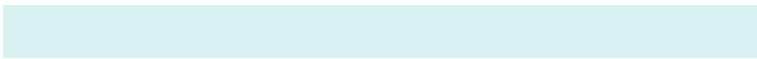
The Inverse Universe completely reimagines the original color for something new.



74.8372, 73.4171, 83.6265



83.5959, 81.0236, 92.9608



75.5305, 83.6158, 95.3788



16.0888, 15.8852, 18.0237



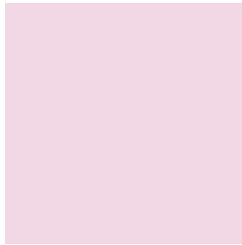
21.4376, 10.8475, 10.2210



1.8334, 0.9224, 1.1137

Previews

White Background



This preview shows how the XYZ color 74.8351, 73.4139, 83.6249 looks on a white background.

Color Contrast Check

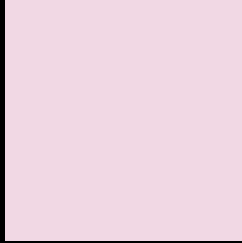
Large Text (above 18pt) WCAG AA × Fail

Any Text WCAG AA × Fail

Large Text (above 18pt) WCAG AAA × Fail

Any Text WCAG AAA × Fail

Black Background



This preview shows how the XYZ color 74.8351, 73.4139, 83.6249 looks on a black background.

Color Contrast Check

Large Text (above 18pt) WCAG AA ✓ Pass

Any Text WCAG AA ✓ Pass

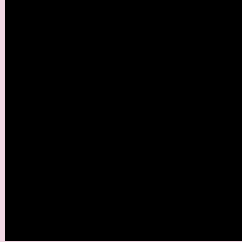
Large Text (above 18pt) WCAG AAA ✓ Pass

Any Text WCAG AAA ✓ Pass

If you want to check with other color combinations, try the [Color Contrast Checker](#).

XYZ 74.8351, 73.4139, 83.6249

Background



This preview shows how black text looks on a background with the XYZ color 74.8351, 73.4139, 83.6249.



This preview shows how white text looks on a background with the XYZ color 74.8351, 73.4139,

Color Blindness Simulation

Color vision deficiency is a very complex topic, and I could not describe the different causes any better than Wikipedia does, so if you want to learn more, you should check out their [article about color blindness](#).

Dichromacy



Original Color

74.8351, 73.4139, 83.6249

Protanopia

71.0207, 73.3297, 86.0122

Deuteranopia

75.1774, 73.5904, 83.6409



Tritanopia

75.4839, 73.3043, 86.5146

Trichromacy



Original Color

74.8351, 73.4139, 83.6249

Protanomaly

72.2476, 73.1992, 85.1839

Deuteranomaly

75.1774, 73.5904, 83.6409

Tritanomaly

75.3422, 73.2476, 85.7686

Monochromacy



Original Color

74.8351, 73.4139, 83.6249

Achromatopsia

71.5672, 75.2942, 81.9954

Achromatomaly

72.8037, 74.7225, 82.5372

CSS Examples

Text

The CSS property to change the color of the text to XYZ 74.8351, 73.4139, 83.6249 is called "color". The color property can be set on classes, ids or directly on the HTML element.

This example shows how text in the color rgb(241, 216, 228) looks like.

```
.text, #text, p{  
    color:rgb(241, 216, 228)  
}
```

If you want to add a text shadow in that color use the text-shadow property, you can generate a text shadow directly with our [CSS Text Shadow Generator](#).

Here you see how black text with a 4 pixel rgb(241, 216, 228) colored shadow looks like.

```
.shadow{ text-shadow: 4px 4px 2px rgb(241, 216, 228) }
```

Border

The CSS property to change the border of an element to XYZ 74.8351, 73.4139, 83.6249 is called "border". The border property can be set on classes, ids or directly on the HTML element.

This example shows the color as border, it can be applied via the CSS property "border" or "border-color".

```
.border, #border, table{ border:4px solid rgb(241, 216, 228) }
```


If only the border color should be changed use the property `border-color`.

```
.border{ border-color:rgb(241, 216, 228) }
```

If you want to add a box shadow in that color use:

Here you see how a box with a 4 pixel `rgb(241, 216, 228)` colored shadow looks like.

```
.boxshadow{ -moz-box-shadow:4px 4px 4px  
4px rgb(241, 216, 228); -webkit-box-  
shadow:4px 4px 4px 4px rgb(241, 216, 228);  
box-shadow:4px 4px 4px 4px rgb(241, 216,  
228) }
```

Background

The CSS property to change the background color of an element to XYZ 74.8351, 73.4139, 83.6249 is called "background". The background property can be set on classes, ids or directly on the HTML element.

```
.background, #background, body{  
background: rgb(241, 216, 228) }
```

If only the background color should be changed can be used:

```
.background{ background-color: rgb(241,  
216, 228) }
```

This example shows the color as background, it is applied via the CSS property "background".

To optimize and compress your CSS code, you can use our [online CSS compressor and optimizer](#) based on csstidy. If you want to create a linear or radial gradient as background or border, check our [CSS Gradient Generator](#).

Hey! You found this booklet interesting? Support Converting Colors with the new Membership Option!

The pro membership hides all ads, plus gives you double the colors in the color bucket, and more awesome pro features!

[Learn more, Memberships starting at \\$2.50/m!](#)

**Follow me
on Twitter!**

@ConvertingColor