

# Converting Colors

XYZ(74.8409, 75.5541, 82.7439)

Have a look what the booklet for  
XYZ(74.8409, 75.5541, 82.7439)  
contains.

<b>XYZ(74.8438, 75.3810, 82.5568)</b> .....	3
<b><i>Conversions</i></b> .....	4
<b><i>Details</i></b> .....	6
<b><i>Harmonies</i></b> .....	12
<b><i>Previews</i></b> .....	24
<b><i>Color Blindness Simulation</i></b> .....	28
<b><i>CSS Examples</i></b> .....	31

# **Color**

**XYZ(74.8438, 75.3810,  
82.5568)**

# Conversions

## Conversions Part 1

Format	Color
Hex	EEDDE2
RGB	238, 221, 226
RGB Percent	93%, 87%, 89%
CMY	0.0667, 0.1333, 0.1137
CMYK	0.00, 0.07, 0.05, 0.07
HSL	342°, 33%, 90%
HSV	342°, 7%, 93%
XYZ	74.8438, 75.3810, 82.5568
YIQ	226.6530, 8.5270, 5.1590

# Conversions

## Conversions Part 2

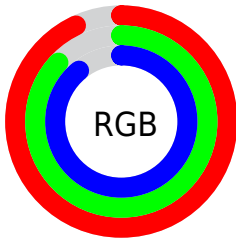
Format	Color
R <sub>Y</sub> B	238, 221, 226
Decimal	15654370
CIE Lab	89.57, 6.67, -0.35
CIE LCh	90, 6.678, 356.962
Yxy	75.3810, 0.3215, 0.3238
Android (android.graphics.Color)	4293844450 (0xFFEEDDE2)
YUV	226.6530, -0.3219, 9.9513
Hunter-Lab	86.8222, 1.9343, 4.3984

# Details

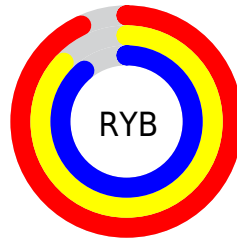
The XYZ color **74.8438, 75.3810, 82.5568** is a light color, and the websafe version is hex **CCCCCC**. A complement of this color would be **75.1042, 82.4064, 89.0424**, and the grayscale version is **72.7614, 76.5506, 83.3636**.

A 20% lighter version of the original color is **95.0500, 100.0000, 108.9000**, and **40.2783, 40.1578, 44.1564** is the 20% darker color. If you saturate the color by 10%, you get **66.8064, 62.8165, 69.0536**, and if you desaturate by 10%, it is **84.0023, 89.8240, 97.5505**.

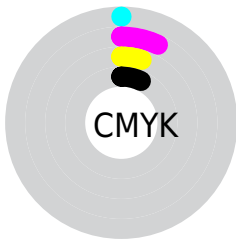
# Distribution



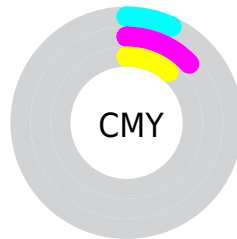
- Red (93%)
- Green (87%)
- Blue (89%)



- Red (93%)
- Yellow (87%)
- Blue (89%)



- Cyan (0%)
- Magenta (7%)
- Yellow (5%)
- Black (7%)



- Cyan (7%)
- Magenta (13%)
- Yellow (11%)

# Brightness & Saturation Gradients

These gradients show how the XYZ color 74.8438, 75.3810, 82.5568 changes by changing the brightness by 10 percent. The first figure shows a shift by +10% for each color and the second figure -10%.

Similar to the brightness gradients but the following saturation gradients show a change of the XYZ color 74.8438, 75.3810, 82.5568 by changing the saturation by 10% instead.



74.8438, 75.3810,  
82.5568

74.8438, 75.3810,  
82.5568

466.3860,  
479.2261, 523.4405

55.7787, 55.9251,  
61.2861

125.0803,  
126.8515, 138.7982

40.2618, 40.1429,  
44.0241

156.9824,  
159.6349, 174.6060

27.9278, 27.6499,  
30.3521

193.8942,  
197.6296, 216.0967

18.4114, 18.0619,  
19.8517

236.1810,  
241.2200, 263.6886

11.3473, 10.9945,  
12.1043

284.2083,  
290.7904, 317.8004

6.3699, 6.0631,  
6.6913

338.3413,

3.1141, 2.8835,

346.7253, 378.8507

3.1943

398.9454,  
409.4091, 447.2578

■ 1.2144, 1.0712,  
1.1947

■ 0.1177, 0.0000,  
0.0000

■ 74.8438, 75.3810,  
82.5568

■ 74.8438, 75.3810,  
82.5568

■ 66.8064, 62.8165,  
69.0536

■ 84.0023, 89.8240,  
97.5505

■ 59.8398, 52.0434,  
56.9896

■ 89.0703, 96.9174,  
108.6202

■ 53.8997, 42.9826,  
46.3173

■ 48.9357, 35.5450,  
36.9851

■ 44.8933, 29.6335,  
28.9376

■ 41.7123, 25.1405,  
22.1157

■ 39.3251, 21.9442,  
16.4548

■ 37.6531, 19.9020,  
11.8838

■ 36.5962, 18.8299,  
8.3203

# Harmonies

## Analogous

The Analogous color harmony consists of three colors that are next to each other on the color wheel.



74.3245, 75.3810, 87.1016



74.8438, 75.3810, 82.5568



74.4959, 75.3810, 78.0488

# Triad

The Triadic color harmony groups three colors that are evenly spaced from another and form a triangle on the color wheel.



74.8438, 75.3810, 82.5568



70.2266, 75.3810, 74.2854



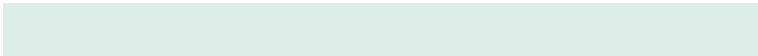
69.9413, 75.3810, 89.8858

# Complementary

The Complementary color scheme is a pair of colors which are on the opposite of each other on the color wheel.



74.8438, 75.3810, 82.5568



75.1042, 82.4064, 89.0424

# Split Complementary

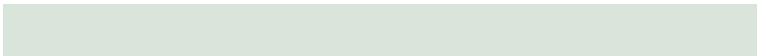
Split-complementary colors differ from the complementary color scheme. The scheme consists of three colors, the original color and two neighbors of the complement color.



68.8724, 75.3810, 86.2417



74.8438, 75.3810, 82.5568



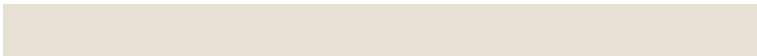
69.0354, 75.3810, 77.2496

# Square

The Square scheme is like the rectangle color scheme, but the four colors are evenly spaced on the color wheel.



74.8438, 75.3810, 82.5568



71.8147, 75.3810, 73.3821



68.5433, 75.3810, 81.5993



71.4803, 75.3810, 91.4331



# Rectangle

The Rectangle color scheme consists of four colors that form a rectangle on the color wheel.



74.8438, 75.3810, 82.5568



73.8219, 75.3810, 75.6495



68.5433, 75.3810, 81.5993



69.5160, 75.3810, 88.8588

# Sweetspot

The Sweet Spot groups the original color and five complimentary colors.



74.8459, 75.3843, 82.5584



92.8701, 96.5593, 105.3401



74.8632, 75.1962, 91.4585



19.9009, 20.7037, 22.5845



0.0000, 0.0000, 0.0000



20.3446, 21.4041, 23.3091



# Same Dimension

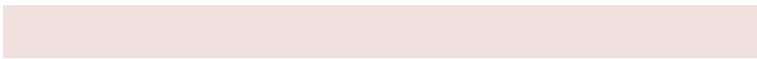
The Same Dimension uses a secret algorithm to generate beautiful new colors.



74.8459, 75.3843, 82.5584



85.6606, 85.2213, 93.4382



75.0768, 76.9272, 79.3020



15.9639, 15.8353, 17.3663



20.3366, 10.4071, 4.4232



1.7337, 0.8825, 0.5886



# Inverse Universe

The Inverse Universe completely reimagines the original color for something new.



74.8459, 75.3843, 82.5584



85.6606, 85.2213, 93.4382



74.8478, 80.7353, 92.5285



15.9639, 15.8353, 17.3663



20.3366, 10.4071, 4.4232

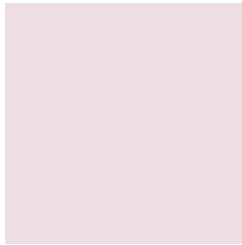


1.7337, 0.8825, 0.5886



# Previews

## White Background



This preview shows how the XYZ color 74.8438, 75.3810, 82.5568 looks on a white background.

## Color Contrast Check

Large Text (above 18pt) WCAG AA × Fail

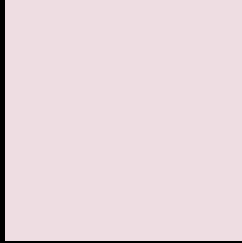
Any Text WCAG AA × Fail

Large Text (above 18pt) WCAG AAA × Fail

Any Text WCAG AAA × Fail



# Black Background



This preview shows how the XYZ color 74.8438, 75.3810, 82.5568 looks on a black background.

## Color Contrast Check

Large Text (above 18pt) WCAG AA ✓ Pass

Any Text WCAG AA ✓ Pass

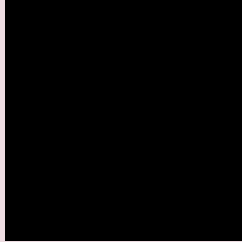
Large Text (above 18pt) WCAG AAA ✓ Pass

Any Text WCAG AAA ✓ Pass

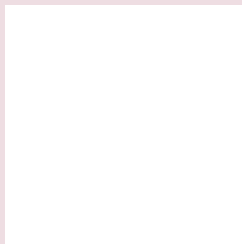
If you want to check with other color combinations, try the [Color Contrast Checker](#).

**XYZ 74.8438, 75.3810, 82.5568**

## **Background**



This preview shows how black text looks on a background with the XYZ color 74.8438, 75.3810, 82.5568.



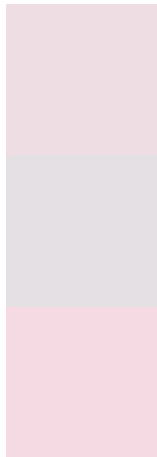
This preview shows how white text looks on a background with the XYZ color 74.8438, 75.3810,

82.5568.

# Color Blindness Simulation

Color vision deficiency is a very complex topic, and I could not describe the different causes any better than Wikipedia does, so if you want to learn more, you should check out their [article about color blindness](#).

## Dichromacy



### Original Color

74.8438, 75.3810, 82.5568

### Protanopia

72.6542, 75.4067, 84.1245

### Deuteranopia

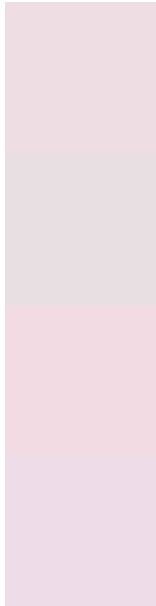
76.9426, 75.2817, 83.1486



## Tritanopia

76.5528, 75.3027, 90.6209

# Trichromacy



## Original Color

74.8438, 75.3810, 82.5568

## Protanomaly

73.5315, 75.4772, 83.3661

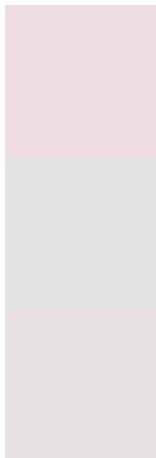
## Deuteranomaly

76.1588, 75.2638, 83.1864

## Tritanomaly

75.8978, 75.4203, 87.6481

# Monochromacy



## Original Color

74.8438, 75.3810, 82.5568

## Achromatopsia

73.0128, 76.8151, 83.6517

## Achromatomaly

73.7453, 76.3854, 83.5301

# CSS Examples

## Text

The CSS property to change the color of the text to XYZ 74.8438, 75.3810, 82.5568 is called "color". The color property can be set on classes, ids or directly on the HTML element.

This example shows how text in the color rgb(238, 221, 226) looks like.

```
.text, #text, p{  
    color:rgb(238, 221, 226)  
}
```

If you want to add a text shadow in that color use the text-shadow property, you can generate a text shadow directly with our [CSS Text Shadow Generator](#).

Here you see how black text with a 4 pixel rgb(238, 221, 226) colored shadow looks like.

```
.shadow{ text-shadow: 4px 4px 2px rgb(238, 221, 226) }
```

## Border

The CSS property to change the border of an element to XYZ 74.8438, 75.3810, 82.5568 is called "border". The border property can be set on classes, ids or directly on the HTML element.

This example shows the color as border, it can be applied via the CSS property "border" or "border-color".

```
.border, #border, table{ border:4px solid rgb(238, 221, 226) }
```



If only the border color should be changed use the property `border-color`.

```
.border{ border-color:rgb(238, 221, 226) }
```

If you want to add a box shadow in that color use:

Here you see how a box with a 4 pixel `rgb(238, 221, 226)` colored shadow looks like.

```
.boxshadow{ -moz-box-shadow:4px 4px 4px 4px rgb(238, 221, 226); -webkit-box-shadow:4px 4px 4px 4px rgb(238, 221, 226); box-shadow:4px 4px 4px 4px rgb(238, 221, 226) }
```

# Background

The CSS property to change the background color of an element to XYZ 74.8438, 75.3810, 82.5568 is called "background". The background property can be set on classes, ids or directly on the HTML element.

```
.background, #background, body{  
background: rgb(238, 221, 226) }
```

If only the background color should be changed can be used:

```
.background{ background-color: rgb(238,  
221, 226) }
```

This example shows the color as background, it is applied via the CSS property "background".

To optimize and compress your CSS code, you can use our [online CSS compressor and optimizer](#) based on csstidy. If you want to create a linear or radial gradient as background or border, check our [CSS Gradient Generator](#).

Hey! You found this booklet interesting? Support Converting Colors with the new Membership Option!

The pro membership hides all ads, plus gives you double the colors in the color bucket, and more awesome pro features!

**[Learn more, Memberships starting at \\$2.50/m!](#)**

**Follow me  
on Twitter!**

@ConvertingColor