

Converting Colors

XYZ(76.1188, 76.3034, 70.7683)

Have a look what the booklet for
XYZ(76.1188, 76.3034, 70.7683)
contains.

XYZ(76.0765, 76.2728, 71.0341)	3
<i>Conversions</i>	4
<i>Details</i>	6
<i>Harmonies</i>	12
<i>Previews</i>	24
<i>Color Blindness Simulation</i>	28
<i>CSS Examples</i>	31

Color

**XYZ(76.0765, 76.2728,
71.0341)**

Conversions

Conversions Part 1

Format	Color
Hex	F8DDD1
RGB	248, 221, 209
RGB Percent	97%, 87%, 82%
CMY	0.0274, 0.1333, 0.1804
CMYK	0.00, 0.11, 0.16, 0.03
HSL	18°, 74%, 90%
HSV	18°, 16%, 97%
XYZ	76.0765, 76.2728, 71.0341
YIQ	227.7050, 19.9440, 1.9920

Conversions

Conversions Part 2

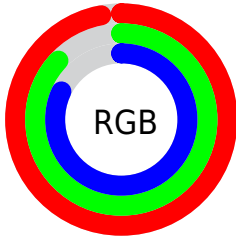
Format	Color
R _Y B	248, 226, 209
Decimal	16309713
CIE Lab	89.99, 7.40, 9.27
CIE LCh	90, 11.866, 51.404
Yxy	76.2728, 0.3406, 0.3414
Android (android.graphics.Color)	4294499793 (0xFFF8DDD1)
YUV	227.7050, -9.2216, 17.7987
Hunter-Lab	87.3343, 2.6555, 12.9100

Details

The XYZ color **76.0765, 76.2728, 71.0341** is a light color, and the websafe version is hex **FFCCCC**. A complement of this color would be **73.2329, 80.3219, 100.4516**, and the grayscale version is **73.5840, 77.4161, 84.3062**.

A 20% lighter version of the original color is **95.0500, 100.0000, 108.9000**, and **41.0385, 40.7154, 36.7062** is the 20% darker color. If you saturate the color by 10%, you get **68.9393, 66.5353, 54.6674**, and if you desaturate by 10%, it is **84.1593, 87.1353, 90.0758**.

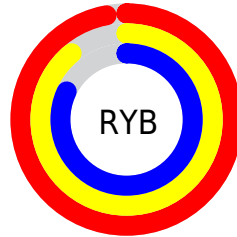
Distribution



Red (97%)

Green (87%)

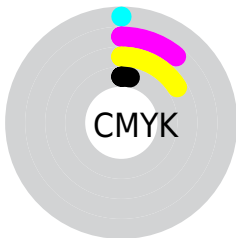
Blue (82%)



Red (97%)

Yellow (89%)

Blue (82%)

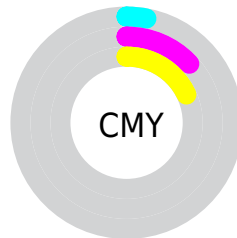


Cyan (0%)

Magenta (11%)

Yellow (16%)

Black (3%)



Cyan (3%)

Magenta (13%)

Yellow (18%)

Brightness & Saturation Gradients

These gradients show how the XYZ color 76.0765, 76.2728, 71.0341 changes by changing the brightness by 10 percent. The first figure shows a shift by +10% for each color and the second figure -10%.

Similar to the brightness gradients but the following saturation gradients show a change of the XYZ color 76.0765, 76.2728, 71.0341 by changing the saturation by 10% instead.

76.0765, 76.2728,
71.0341

76.0765, 76.2728,
71.0341

470.5499,
482.2810, 483.0595

56.7925, 56.6562,
51.8880

126.8148,
128.1125, 122.3772

41.0782, 40.7293,
36.5342

158.9999,
161.1043, 155.4113

28.5681, 28.1076,
24.5541

196.2160,
199.3234, 193.9118

18.8970, 18.4068,
15.5292

238.8285,
243.1541, 238.2972

11.6994, 11.2424,
9.0409

287.2028,
292.9808, 288.9862

6.6101, 6.2302,
4.6707

341.7042,

3.2636, 2.9855,

349.1880, 346.3972

2.0000

402.6981,
412.1599, 410.9488

■ 1.2947, 1.1242,
0.5553

■ 0.1792, 0.0000,
0.0000

■ 76.0765, 76.2728,
71.0341

■ 76.0765, 76.2728,
71.0341

■ 68.9393, 66.5353,
54.6674

■ 84.1593, 87.1353,
90.0758

■ 62.7057, 57.8759,
40.8501

■ 92.5217, 98.6966,
108.7817

■ 57.3393, 50.2595,
29.4538

■ 52.7989, 43.6452,
20.3368

■ 49.0397, 37.9890,
13.3425

■ 46.0120, 33.2436,
8.2945

■ 43.6593, 29.3569,
4.9868

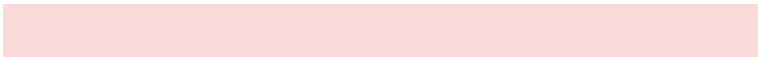
■ 41.9150, 26.2701,
3.1661

■ 41.3194, 25.1720,
2.6809

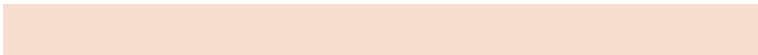
Harmonies

Analogous

The Analogous color harmony consists of three colors that are next to each other on the color wheel.



77.8828, 76.2728, 77.2825



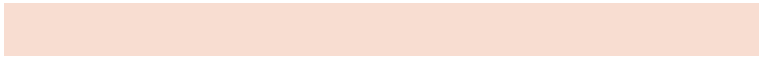
76.0765, 76.2728, 71.0341



73.3426, 76.2728, 68.0561

Triad

The Triadic color harmony groups three colors that are evenly spaced from another and form a triangle on the color wheel.



76.0765, 76.2728, 71.0341



67.0515, 76.2728, 80.6534



74.5763, 76.2728, 99.0402

Complementary

The Complementary color scheme is a pair of colors which are on the opposite of each other on the color wheel.



76.0765, 76.2728, 71.0341



73.2329, 80.3219, 100.4516

Split Complementary

Split-complementary colors differ from the complementary color scheme. The scheme consists of three colors, the original color and two neighbors of the complement color.



71.6540, 76.2728, 100.0944



76.0765, 76.2728, 71.0341



67.3616, 76.2728, 89.0936

Square

The Square scheme is like the rectangle color scheme, but the four colors are evenly spaced on the color wheel.



76.0765, 76.2728, 71.0341



68.1688, 76.2728, 73.3587



69.0277, 76.2728, 96.3457



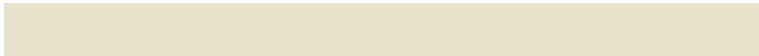
77.0005, 76.2728, 93.5552

Rectangle

The Rectangle color scheme consists of four colors that form a rectangle on the color wheel.



76.0765, 76.2728, 71.0341



71.3837, 76.2728, 68.1768



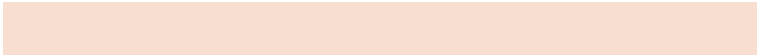
69.0277, 76.2728, 96.3457



73.6178, 76.2728, 99.9385

Sweetspot

The Sweet Spot groups the original color and five complimentary colors.



76.0786, 76.2762, 71.0357



90.3135, 93.7036, 97.5280



76.6967, 71.6320, 89.3705



19.1928, 19.8723, 20.5458



0.0000, 0.0000, 0.0000



20.3446, 21.4041, 23.3091

Same Dimension

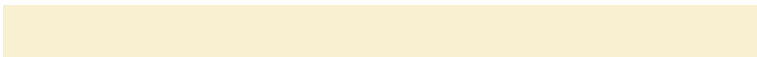
The Same Dimension uses a secret algorithm to generate beautiful new colors.



76.0786, 76.2762, 71.0357



78.4265, 77.7009, 69.6077



81.4399, 86.9988, 72.8228



17.6803, 18.0965, 18.0235



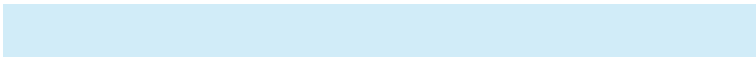
22.4292, 13.8150, 1.4844



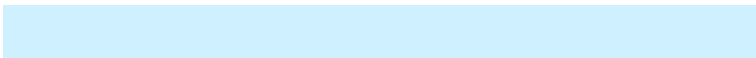
2.1669, 1.4587, 0.1674

Inverse Universe

The Inverse Universe completely reimagines the original color for something new.



73.2329, 80.3219, 100.4516



74.8422, 82.7919, 106.6436



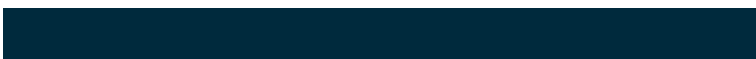
68.0001, 69.8564, 98.7073



17.2886, 18.6541, 22.0747



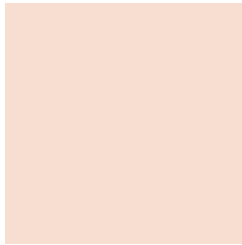
17.2177, 19.7909, 50.8861



1.6886, 2.0208, 4.7442

Previews

White Background



This preview shows how the XYZ color 76.0765, 76.2728, 71.0341 looks on a white background.

Color Contrast Check

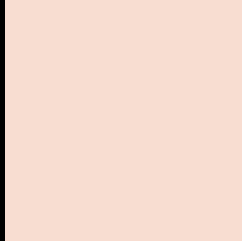
Large Text (above 18pt) WCAG AA × Fail

Any Text WCAG AA × Fail

Large Text (above 18pt) WCAG AAA × Fail

Any Text WCAG AAA × Fail

Black Background



This preview shows how the XYZ color 76.0765, 76.2728, 71.0341 looks on a black background.

Color Contrast Check

Large Text (above 18pt) WCAG AA ✓ Pass

Any Text WCAG AA ✓ Pass

Large Text (above 18pt) WCAG AAA ✓ Pass

Any Text WCAG AAA ✓ Pass

If you want to check with other color combinations, try the [Color Contrast Checker](#).

XYZ 76.0765, 76.2728, 71.0341

Background



This preview shows how black text looks on a background with the XYZ color 76.0765, 76.2728, 71.0341.

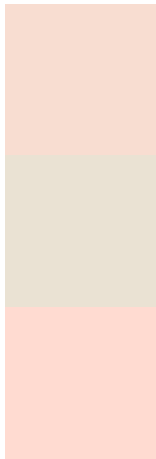


This preview shows how white text looks on a background with the XYZ color 76.0765, 76.2728,

Color Blindness Simulation

Color vision deficiency is a very complex topic, and I could not describe the different causes any better than Wikipedia does, so if you want to learn more, you should check out their [article about color blindness](#).

Dichromacy



Original Color

76.0765, 76.2728, 71.0341

Protanopia

72.8859, 76.5883, 72.5695

Deuteranopia

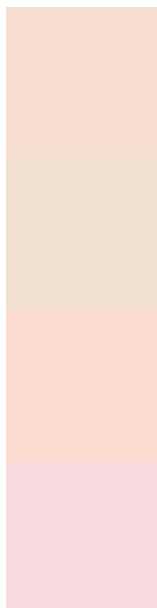
78.0801, 76.5265, 70.9774



Tritanopia

79.4478, 76.0755, 88.3386

Trichromacy



Original Color

76.0765, 76.2728, 71.0341

Protanomaly

73.8851, 76.3152, 71.8089

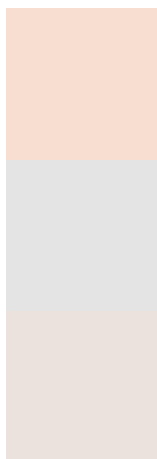
Deuteranomaly

77.2467, 76.4853, 71.0134

Tritanomaly

78.0864, 75.9030, 81.7693

Monochromacy



Original Color

76.0765, 76.2728, 71.0341

Achromatopsia

73.7419, 77.5822, 84.4870

Achromatomaly

74.2373, 76.7331, 79.3048

CSS Examples

Text

The CSS property to change the color of the text to XYZ 76.0765, 76.2728, 71.0341 is called "color". The color property can be set on classes, ids or directly on the HTML element.

This example shows how text in the color rgb(248, 221, 209) looks like.

```
.text, #text, p{  
    color:rgb(248, 221, 209)  
}
```

If you want to add a text shadow in that color use the text-shadow property, you can generate a text shadow directly with our [CSS Text Shadow Generator](#).

Here you see how black text with a 4 pixel rgb(248, 221, 209) colored shadow looks like.

```
.shadow{ text-shadow: 4px 4px 2px rgb(248, 221, 209) }
```

Border

The CSS property to change the border of an element to XYZ 76.0765, 76.2728, 71.0341 is called "border". The border property can be set on classes, ids or directly on the HTML element.

This example shows the color as border, it can be applied via the CSS property "border" or "border-color".

```
.border, #border, table{ border:4px solid rgb(248, 221, 209) }
```


If only the border color should be changed use the property `border-color`.

```
.border{ border-color:rgb(248, 221, 209) }
```

If you want to add a box shadow in that color use:

Here you see how a box with a 4 pixel `rgb(248, 221, 209)` colored shadow looks like.

```
.boxshadow{ -moz-box-shadow:4px 4px 4px  
4px rgb(248, 221, 209); -webkit-box-  
shadow:4px 4px 4px 4px rgb(248, 221, 209);  
box-shadow:4px 4px 4px 4px rgb(248, 221,  
209) }
```

Background

The CSS property to change the background color of an element to XYZ 76.0765, 76.2728, 71.0341 is called "background". The background property can be set on classes, ids or directly on the HTML element.

```
.background, #background, body{  
background: rgb(248, 221, 209) }
```

If only the background color should be changed can be used:

```
.background{ background-color: rgb(248,  
221, 209) }
```

This example shows the color as background, it is applied via the CSS property "background".

To optimize and compress your CSS code, you can use our [online CSS compressor and optimizer](#) based on csstidy. If you want to create a linear or radial gradient as background or border, check our [CSS Gradient Generator](#).

Hey! You found this booklet interesting? Support Converting Colors with the new Membership Option!

The pro membership hides all ads, plus gives you double the colors in the color bucket, and more awesome pro features!

[Learn more, Memberships starting at \\$2.50/m!](#)

**Follow me
on Twitter!**

@ConvertingColor