

Converting Colors

XYZ(77.0226, 67.3903,
108.1277)

Have a look what the booklet for
XYZ(77.0226, 67.3903, 108.1277)
contains.

XYZ(76.2501, 67.2010, 103.5600)	3
<i>Conversions</i>	4
<i>Details</i>	6
<i>Harmonies</i>	12
<i>Previews</i>	24
<i>Color Blindness Simulation</i>	28
<i>CSS Examples</i>	31

Color

**XYZ(76.2501, 67.2010,
103.5600)**

Conversions

Conversions Part 1

Format	Color
Hex	F6C6FF
RGB	246, 198, 255
RGB Percent	96%, 78%, 100%
CMY	0.0353, 0.2235, 0.0000
CMYK	0.04, 0.22, 0.00, 0.00
HSL	291°, 100%, 89%
HSV	291°, 22%, 100%
XYZ	76.2501, 67.2010, 103.5600
YIQ	218.8500, 10.3110, 27.9030

Conversions

Conversions Part 2

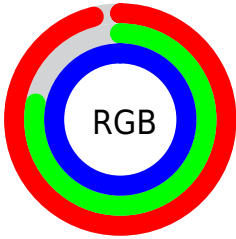
Format	Color
R _Y B	246, 198, 255
Decimal	16172799
CIE Lab	85.61, 26.64, -21.50
CIE LCh	86, 34.234, 321.085
Yxy	67.2010, 0.3087, 0.2721
Android (android.graphics.Color)	4294362879 (0xFFFF6C6FF)
YUV	218.8500, 17.8220, 23.8106
Hunter-Lab	81.9762, 22.5732, -17.5173

Details

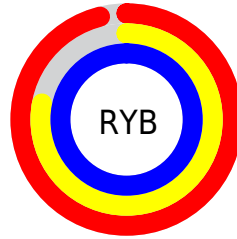
The XYZ color **76.2501, 67.2010, 103.5600** is a light color, and the websafe version is hex **FFCCFF**. A complement of this color would be **71.6868, 88.8634, 66.8035**, and the grayscale version is **67.1051, 70.5998, 76.8832**.

A 20% lighter version of the original color is **95.0500, 100.0000, 108.9000**, and **41.1526, 34.8426, 57.9824** is the 20% darker color. If you saturate the color by 10%, you get **69.5086, 55.7908, 101.7129**, and if you desaturate by 10%, it is **84.0072, 80.5950, 105.7365**.

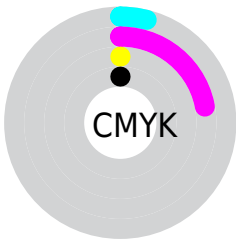
Distribution



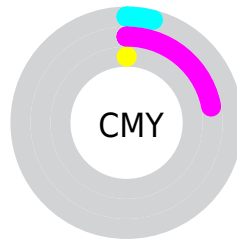
- Red (96%)
- Green (78%)
- Blue (100%)



- Red (96%)
- Yellow (78%)
- Blue (100%)



- Cyan (4%)
- Magenta (22%)
- Yellow (0%)
- Black (0%)



- Cyan (4%)
- Magenta (22%)
- Yellow (0%)

Brightness & Saturation Gradients

These gradients show how the XYZ color 76.2501, 67.2010, 103.5600 changes by changing the brightness by 10 percent. The first figure shows a shift by +10% for each color and the second figure -10%.

Similar to the brightness gradients but the following saturation gradients show a change of the XYZ color 76.2501, 67.2010, 103.5600 by changing the saturation by 10% instead.

76.2501, 67.2010,
103.5600

76.2501, 67.2010,
103.5600

471.1346,
450.6599, 592.8909

56.9354, 49.2480,
78.6436

127.0588,
115.2084, 168.1353

41.1933, 34.8162,
58.0832

159.2836,
146.0315, 208.6312

28.6585, 23.5214,
41.4604

196.5424,
181.9135, 255.1574

18.9656, 14.9789,
28.3566

239.2006,
223.2388, 308.1324

11.7493, 8.8046,
18.3533

287.6236,
270.3916, 367.9747

6.6442, 4.6140,
11.0319

342.1767,

3.2849, 2.0226,

323.7565, 435.1028

5.9738

403.2252,
383.7178, 509.9354

■ 1.3062, 0.6205,
2.7606

■ 0.1878, 0.0000,
0.9738

■ 76.2501, 67.2010,
103.5600

■ 76.2501, 67.2010,
103.5600

■ 69.5086, 55.7908,
101.7129

■ 84.0072, 80.5950,
105.7365

■ 63.7277, 46.2576,
100.1775

■ 92.8200, 96.0557,
108.2562

■ 58.8557, 38.4975,
98.9365

95.0500, 100.0000,
108.9000

■ 54.8338, 32.3929,
97.9701

■ 51.5959, 27.8119,
97.2566

■ 49.0657, 24.6025,
96.7705

■ 47.1513, 22.5808,
96.4811

■ 45.9983, 21.6279,
96.3580

Harmonies

Analogous

The Analogous color harmony consists of three colors that are next to each other on the color wheel.



69.4140, 67.2010, 120.9368



76.2501, 67.2010, 103.5600



79.8421, 67.2010, 80.0214

Triad

The Triadic color harmony groups three colors that are evenly spaced from another and form a triangle on the color wheel.



76.2501, 67.2010, 103.5600



66.2219, 67.2010, 38.4468



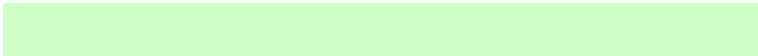
50.8915, 67.2010, 89.7132

Complementary

The Complementary color scheme is a pair of colors which are on the opposite of each other on the color wheel.



76.2501, 67.2010, 103.5600



71.6868, 88.8634, 66.8035

Split Complementary

Split-complementary colors differ from the complementary color scheme. The scheme consists of three colors, the original color and two neighbors of the complement color.



50.1884, 67.2010, 66.7221



76.2501, 67.2010, 103.5600



58.6341, 67.2010, 40.0000

Square

The Square scheme is like the rectangle color scheme, but the four colors are evenly spaced on the color wheel.



76.2501, 67.2010, 103.5600



73.7510, 67.2010, 44.6111



52.9126, 67.2010, 49.3966



54.9181, 67.2010, 111.8800

Rectangle

The Rectangle color scheme consists of four colors that form a rectangle on the color wheel.



76.2501, 67.2010, 103.5600



79.7278, 67.2010, 65.2288



52.9126, 67.2010, 49.3966



50.2723, 67.2010, 81.7319

Sweetspot

The Sweet Spot groups the original color and five complimentary colors.



76.2520, 67.2038, 103.5605



88.5884, 88.6047, 107.0410



63.7754, 64.0970, 103.6184



18.8477, 18.7652, 22.8786



0.0000, 0.0000, 0.0000



20.3446, 21.4041, 23.3091

Same Dimension

The Same Dimension uses a secret algorithm to generate beautiful new colors.



76.2520, 67.2038, 103.5605



72.9939, 61.6574, 102.6616



76.5759, 67.7069, 88.3910



18.4944, 18.1466, 22.7778



24.1407, 11.3555, 50.3541



2.4228, 1.1429, 4.9062

Inverse Universe

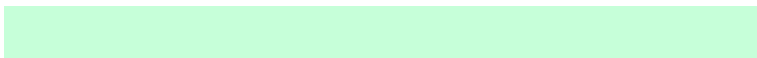
The Inverse Universe completely reimagines the original color for something new.



72.6983, 66.1558, 67.9716



68.9109, 60.4732, 60.8758



71.5750, 88.5365, 78.9650



18.1263, 18.0338, 19.2822



21.7856, 11.2035, 2.2556



2.1533, 1.1037, 0.3886

Previews

White Background



This preview shows how the XYZ color 76.2501, 67.2010, 103.5600 looks on a white background.

Color Contrast Check

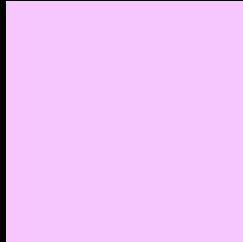
Large Text (above 18pt) WCAG AA × Fail

Any Text WCAG AA × Fail

Large Text (above 18pt) WCAG AAA × Fail

Any Text WCAG AAA × Fail

Black Background



This preview shows how the XYZ color 76.2501, 67.2010, 103.5600 looks on a black background.

Color Contrast Check

Large Text (above 18pt) WCAG AA ✓ Pass

Any Text WCAG AA ✓ Pass

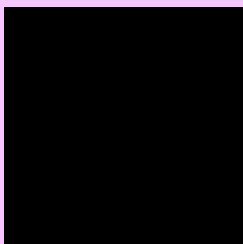
Large Text (above 18pt) WCAG AAA ✓ Pass

Any Text WCAG AAA ✓ Pass

If you want to check with other color combinations, try the [Color Contrast Checker](#).

XYZ 76.2501, 67.2010, 103.5600

Background



This preview shows how black text looks on a background with the XYZ color 76.2501, 67.2010, 103.5600.



This preview shows how white text looks on a background with the XYZ color 76.2501, 67.2010,

Color Blindness Simulation

Color vision deficiency is a very complex topic, and I could not describe the different causes any better than Wikipedia does, so if you want to learn more, you should check out their [article about color blindness](#).

Dichromacy



Original Color

76.2501, 67.2010, 103.5600

Protanopia

67.0211, 67.7876, 104.1597

Deuteranopia

68.8490, 67.2917, 102.2884



Tritanopia

70.7868, 67.0538, 76.9220

Trichromacy



Original Color

76.2501, 67.2010, 103.5600



Protanomaly

70.1211, 67.5474, 103.9499



Deuteranomaly

71.3993, 67.1493, 102.9639



Tritanomaly

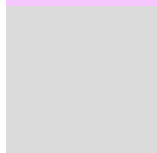
72.7907, 67.1789, 86.2211

Monochromacy



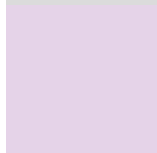
Original Color

76.2501, 67.2010, 103.5600



Achromatopsia

67.3311, 70.8376, 77.1421



Achromatomaly

70.1729, 69.0727, 85.9778

CSS Examples

Text

The CSS property to change the color of the text to XYZ 76.2501, 67.2010, 103.5600 is called "color". The color property can be set on classes, ids or directly on the HTML element.

This example shows how text in the color `rgb(246, 198, 255)` looks like.

```
.text, #text, p{  
    color:rgb(246, 198, 255)  
}
```

If you want to add a text shadow in that color use the text-shadow property, you can generate a text shadow directly with our [CSS Text Shadow Generator](#).

Here you see how black text with a 4 pixel rgb(246, 198, 255) colored shadow looks like.

```
.shadow{ text-shadow: 4px 4px 2px rgb(246, 198, 255) }
```

Border

The CSS property to change the border of an element to XYZ 76.2501, 67.2010, 103.5600 is called "border". The border property can be set on classes, ids or directly on the HTML element.

This example shows the color as border, it can be applied via the CSS property "border" or "border-color".

```
.border, #border, table{ border:4px solid rgb(246, 198, 255) }
```


If only the border color should be changed use the property `border-color`.

```
.border{ border-color:rgb(246, 198, 255) }
```

If you want to add a box shadow in that color use:

Here you see how a box with a 4 pixel `rgb(246, 198, 255)` colored shadow looks like.

```
.boxshadow{ -moz-box-shadow:4px 4px 4px  
4px rgb(246, 198, 255); -webkit-box-  
shadow:4px 4px 4px 4px rgb(246, 198, 255);  
box-shadow:4px 4px 4px 4px rgb(246, 198,  
255) }
```

Background

The CSS property to change the background color of an element to XYZ 76.2501, 67.2010, 103.5600 is called "background". The background property can be set on classes, ids or directly on the HTML element.

```
.background, #background, body{  
background: rgb(246, 198, 255) }
```

If only the background color should be changed can be used:

```
.background{ background-color: rgb(246,  
198, 255) }
```

This example shows the color as background, it is applied via the CSS property "background".

To optimize and compress your CSS code, you can use our [online CSS compressor and optimizer](#) based on csstidy. If you want to create a linear or radial gradient as background or border, check our [CSS Gradient Generator](#).

Hey! You found this booklet interesting? Support Converting Colors with the new Membership Option!

The pro membership hides all ads, plus gives you double the colors in the color bucket, and more awesome pro features!

[Learn more, Memberships starting at \\$2.50/m!](#)

**Follow me
on Twitter!**

@ConvertingColor