

# Converting Colors

XYZ(77.3530, 69.6998, 94.7240)

Have a look what the booklet for  
XYZ(77.3530, 69.6998, 94.7240)  
contains.

<b>XYZ(77.4687, 69.7528, 94.9685)</b> .....	3
<b><i>Conversions</i></b> .....	4
<b><i>Details</i></b> .....	6
<b><i>Harmonies</i></b> .....	12
<b><i>Previews</i></b> .....	24
<b><i>Color Blindness Simulation</i></b> .....	28
<b><i>CSS Examples</i></b> .....	31

# Color

**XYZ(77.4687, 69.7528,  
94.9685)**

# Conversions

## Conversions Part 1

<b>Format</b>	<b>Color</b>
Hex	FBCBF4
RGB	251, 203, 244
RGB Percent	98%, 80%, 96%
CMY	0.0157, 0.2039, 0.0431
CMYK	0.00, 0.19, 0.03, 0.02
HSL	309°, 86%, 89%
HSV	309°, 19%, 98%
XYZ	77.4687, 69.7528, 94.9685
YIQ	222.0260, 15.4470, 22.9270

# Conversions

## Conversions Part 2

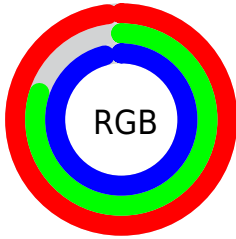
Format	Color
R <sub>Y</sub> B	251, 203, 244
Decimal	16501748
CIE Lab	86.88, 23.62, -13.72
CIE LCh	87, 27.318, 329.857
Yxy	69.7528, 0.3199, 0.2880
Android (android.graphics.Color)	4294691828 (0xFFFB <sup>C</sup> BF4)
YUV	222.0260, 10.8332, 25.4102
Hunter-Lab	83.5181, 19.4140, -8.9560

# Details

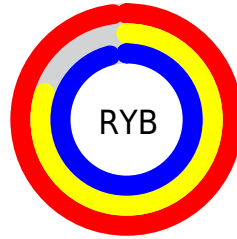
The XYZ color **77.4687, 69.7528, 94.9685** is a light color, and the websafe version is hex **FFCCFF**. A complement of this color would be **70.7614, 86.3460, 73.9136**, and the grayscale version is **69.3696, 72.9822, 79.4776**.

A 20% lighter version of the original color is **95.0500, 100.0000, 108.9000**, and **42.0727, 36.5951, 52.4230** is the 20% darker color. If you saturate the color by 10%, you get **71.4646, 58.6243, 90.2525**, and if you desaturate by 10%, it is **84.4476, 82.8110, 100.0655**.

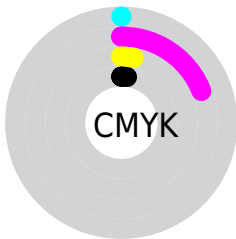
# Distribution



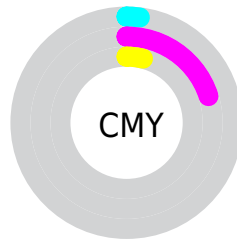
- Red (98%)
- Green (80%)
- Blue (96%)



- Red (98%)
- Yellow (80%)
- Blue (96%)



- Cyan (0%)
- Magenta (19%)
- Yellow (3%)
- Black (2%)



- Cyan (2%)
- Magenta (20%)
- Yellow (4%)

# Brightness & Saturation Gradients

These gradients show how the XYZ color 77.4687, 69.7528, 94.9685 changes by changing the brightness by 10 percent. The first figure shows a shift by +10% for each color and the second figure -10%.

Similar to the brightness gradients but the following saturation gradients show a change of the XYZ color 77.4687, 69.7528, 94.9685 by changing the saturation by 10% instead.



77.4687, 69.7528,  
94.9685

77.4687, 69.7528,  
94.9685

475.2281,  
459.6816, 565.0459

57.9389, 51.3250,  
71.5120

128.7702,  
118.8562, 156.2163

42.0026, 36.4673,  
52.2757

161.2727,  
150.3005, 194.8447

29.2944, 24.7954,  
36.8412

198.8300,  
186.8526, 239.3674

19.4491, 15.9247,  
24.7897

241.8076,  
228.8967, 290.2031

12.1011, 9.4709,  
15.7029

290.5709,  
276.8173, 347.7703

6.8853, 5.0496,  
9.1621

345.4852,

3.4362, 2.2764,

330.9987, 412.4874

4.7488

406.9158,  
391.8253, 484.7731

■ 1.3884, 0.7612,  
2.0445

■ 0.2479, 0.0000,  
0.5824

■ 77.4687, 69.7528,  
94.9685

■ 77.4687, 69.7528,  
94.9685

■ 71.4646, 58.6243,  
90.2525

■ 84.4476, 82.8110,  
100.0655

■ 66.3828, 49.3241,  
85.8972

■ 92.4381, 97.8757,  
105.5538

■ 62.1756, 41.7554,  
81.8874

■ 93.5915, 99.2484,  
108.8181

■ 58.7881, 35.8088,  
78.2043

■ 93.5941, 99.2495,  
108.8319

■ 56.1594, 31.3626,  
74.8274

■ 54.2200, 28.2776,  
71.7331

■ 52.8872, 26.3890,  
68.8936

■ 52.0371, 25.4490,  
66.2673

■ 51.9720, 25.3846,  
66.0423

# Harmonies

## Analogous

The Analogous color harmony consists of three colors that are next to each other on the color wheel.



72.5871, 69.7528, 110.6292



77.4687, 69.7528, 94.9685



79.3214, 69.7528, 76.0363

# Triad

The Triadic color harmony groups three colors that are evenly spaced from another and form a triangle on the color wheel.



77.4687, 69.7528, 94.9685



66.3285, 69.7528, 45.9843



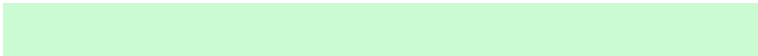
56.2289, 69.7528, 94.7930

# Complementary

The Complementary color scheme is a pair of colors which are on the opposite of each other on the color wheel.



77.4687, 69.7528, 94.9685



70.7614, 86.3460, 73.9136

# Split Complementary

Split-complementary colors differ from the complementary color scheme. The scheme consists of three colors, the original color and two neighbors of the complement color.



54.7842, 69.7528, 75.8616



77.4687, 69.7528, 94.9685



60.3830, 69.7528, 49.3990

# Square

The Square scheme is like the rectangle color scheme, but the four colors are evenly spaced on the color wheel.



77.4687, 69.7528, 94.9685



72.6432, 69.7528, 49.4646



56.2562, 69.7528, 59.6551



60.3334, 69.7528, 110.5170



# Rectangle

The Rectangle color scheme consists of four colors that form a rectangle on the color wheel.



77.4687, 69.7528, 94.9685



78.5032, 69.7528, 64.6416



56.2562, 69.7528, 59.6551



55.4283, 69.7528, 88.5035

# Sweetspot

The Sweet Spot groups the original color and five complimentary colors.



77.4708, 69.7559, 94.9700



90.0046, 90.4808, 105.4561



65.1794, 63.2943, 100.0496



19.1521, 19.1547, 22.4936



0.0000, 0.0000, 0.0000



20.3446, 21.4041, 23.3091



# Same Dimension

The Same Dimension uses a secret algorithm to generate beautiful new colors.



77.4708, 69.7559, 94.9700



77.7621, 67.5792, 96.4937



74.1399, 68.4235, 77.4299



17.8778, 17.4785, 21.2122



27.3607, 13.3600, 34.9374



2.5628, 1.2489, 3.3872



# Inverse Universe

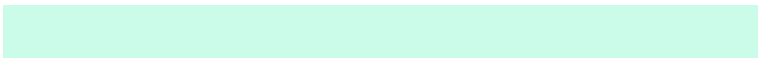
The Inverse Universe completely reimagines the original color for something new.



77.4708, 69.7559, 94.9700



77.7621, 67.5792, 96.4937



73.8934, 87.5988, 90.4066



17.8778, 17.4785, 21.2122



27.3607, 13.3600, 34.9374



2.5628, 1.2489, 3.3872



# Previews

## White Background



This preview shows how the XYZ color 77.4687, 69.7528, 94.9685 looks on a white background.

## Color Contrast Check

Large Text (above 18pt) WCAG AA × Fail

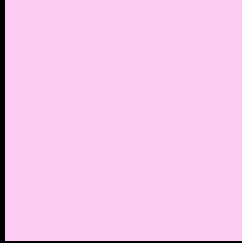
Any Text WCAG AA × Fail

Large Text (above 18pt) WCAG AAA × Fail

Any Text WCAG AAA × Fail



# Black Background



This preview shows how the XYZ color 77.4687, 69.7528, 94.9685 looks on a black background.

## Color Contrast Check

Large Text (above 18pt) WCAG AA ✓ Pass

Any Text WCAG AA ✓ Pass

Large Text (above 18pt) WCAG AAA ✓ Pass

Any Text WCAG AAA ✓ Pass

If you want to check with other color combinations, try the [Color Contrast Checker](#).

**XYZ 77.4687, 69.7528, 94.9685**

## **Background**



This preview shows how black text looks on a background with the XYZ color 77.4687, 69.7528, 94.9685.



This preview shows how white text looks on a background with the XYZ color 77.4687, 69.7528,



# Color Blindness Simulation

Color vision deficiency is a very complex topic, and I could not describe the different causes any better than Wikipedia does, so if you want to learn more, you should check out their [article about color blindness](#).

## Dichromacy



### Original Color

77.4687, 69.7528, 94.9685

### Protanopia

68.9905, 69.9889, 101.9685

### Deuteranopia

71.5654, 69.9918, 93.7423



## Tritanopia

74.3435, 69.9098, 79.3877

# Trichromacy



## Original Color

77.4687, 69.7528, 94.9685



## Protanomaly

71.7572, 69.5968, 99.2741



## Deuteranomaly

73.5702, 69.9049, 94.4094



## Tritanomaly

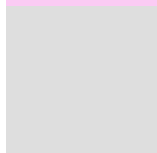
75.5620, 70.0519, 85.1401

# Monochromacy



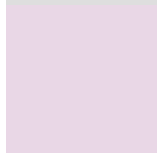
## Original Color

77.4687, 69.7528, 94.9685



## Achromatopsia

69.4303, 73.0461, 79.5472



## Achromatomaly

72.1876, 71.6377, 84.8857

# CSS Examples

## Text

The CSS property to change the color of the text to XYZ 77.4687, 69.7528, 94.9685 is called "color". The color property can be set on classes, ids or directly on the HTML element.

This example shows how text in the color rgb(251, 203, 244) looks like.

```
.text, #text, p{  
    color:rgb(251, 203, 244)  
}
```

If you want to add a text shadow in that color use the text-shadow property, you can generate a text shadow directly with our [CSS Text Shadow Generator](#).

Here you see how black text with a 4 pixel rgb(251, 203, 244) colored shadow looks like.

```
.shadow{ text-shadow: 4px 4px 2px rgb(251, 203, 244) }
```

## Border

The CSS property to change the border of an element to XYZ 77.4687, 69.7528, 94.9685 is called "border". The border property can be set on classes, ids or directly on the HTML element.

This example shows the color as border, it can be applied via the CSS property "border" or "border-color".

```
.border, #border, table{ border:4px solid rgb(251, 203, 244) }
```



If only the border color should be changed use the property `border-color`.

```
.border{ border-color:rgb(251, 203, 244) }
```

If you want to add a box shadow in that color use:

Here you see how a box with a 4 pixel `rgb(251, 203, 244)` colored shadow looks like.

```
.boxshadow{ -moz-box-shadow:4px 4px 4px  
4px rgb(251, 203, 244); -webkit-box-  
shadow:4px 4px 4px 4px rgb(251, 203, 244);  
box-shadow:4px 4px 4px 4px rgb(251, 203,  
244) }
```

# Background

The CSS property to change the background color of an element to XYZ 77.4687, 69.7528, 94.9685 is called "background". The background property can be set on classes, ids or directly on the HTML element.

```
.background, #background, body{  
background: rgb(251, 203, 244) }
```

If only the background color should be changed can be used:

```
.background{ background-color: rgb(251,  
203, 244) }
```

This example shows the color as background, it is applied via the CSS property "background".

To optimize and compress your CSS code, you can use our [online CSS compressor and optimizer](#) based on csstidy. If you want to create a linear or radial gradient as background or border, check our [CSS Gradient Generator](#).

Hey! You found this booklet interesting? Support Converting Colors with the new Membership Option!

The pro membership hides all ads, plus gives you double the colors in the color bucket, and more awesome pro features!

**[Learn more, Memberships starting at \\$2.50/m!](#)**

**Follow me  
on Twitter!**

@ConvertingColor