

Converting Colors

XYZ(77.8474, 69.2276,
103.8670)

Have a look what the booklet for
XYZ(77.8474, 69.2276, 103.8670)
contains.

XYZ(77.8819, 69.4175, 103.9018)	3
<i>Conversions</i>	4
<i>Details</i>	6
<i>Harmonies</i>	12
<i>Previews</i>	24
<i>Color Blindness Simulation</i>	28
<i>CSS Examples</i>	31

Color

**XYZ(77.8819, 69.4175,
103.9018)**

Conversions

Conversions Part 1

Format	Color
Hex	F8CAFF
RGB	248, 202, 255
RGB Percent	97%, 79%, 100%
CMY	0.0274, 0.2078, 0.0000
CMYK	0.03, 0.21, 0.00, 0.00
HSL	292°, 100%, 90%
HSV	292°, 21%, 100%
XYZ	77.8819, 69.4175, 103.9018
YIQ	221.7960, 10.4030, 26.2350

Conversions

Conversions Part 2

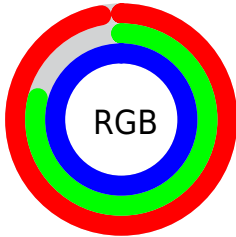
Format	Color
R _Y B	248, 202, 255
Decimal	16304895
CIE Lab	86.71, 25.16, -19.82
CIE LCh	87, 32.030, 321.782
Yxy	69.4175, 0.3100, 0.2763
Android (android.graphics.Color)	4294494975 (0xFFFF8CAFF)
YUV	221.7960, 16.3696, 22.9809
Hunter-Lab	83.3172, 21.0504, -15.6164

Details

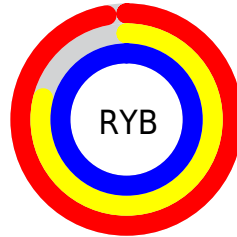
The XYZ color **77.8819, 69.4175, 103.9018** is a light color, and the websafe version is hex **FFCCFF**. A complement of this color would be **72.7169, 89.3404, 69.2924**, and the grayscale version is **69.1720, 72.7743, 79.2513**.

A 20% lighter version of the original color is **95.0500, 100.0000, 108.9000**, and **42.2688, 36.3334, 58.2113** is the 20% darker color. If you saturate the color by 10%, you get **71.2034, 57.8160, 102.0145**, and if you desaturate by 10%, it is **85.5743, 83.0130, 106.1206**.

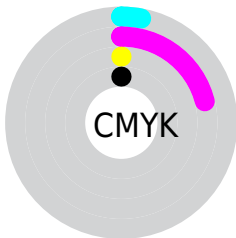
Distribution



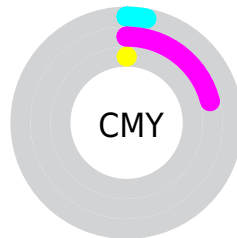
- Red (97%)
- Green (79%)
- Blue (100%)



- Red (97%)
- Yellow (79%)
- Blue (100%)



- Cyan (3%)
- Magenta (21%)
- Yellow (0%)
- Black (0%)



- Cyan (3%)
- Magenta (21%)
- Yellow (0%)

Brightness & Saturation Gradients

These gradients show how the XYZ color 77.8819, 69.4175, 103.9018 changes by changing the brightness by 10 percent. The first figure shows a shift by +10% for each color and the second figure -10%.

Similar to the brightness gradients but the following saturation gradients show a change of the XYZ color 77.8819, 69.4175, 103.9018 by changing the saturation by 10% instead.

77.8819, 69.4175,
103.9018

77.8819, 69.4175,
103.9018

476.6116,
458.5021, 593.9843

58.2794, 51.0518,
78.9281

129.3499,
118.3777, 168.6074

42.2775, 36.2498,
58.3157

161.9461,
149.7410, 209.1763

29.5107, 24.6272,
41.6461

199.6042,
186.2056, 255.7807

19.6137, 15.7995,
28.5008

242.6897,
228.1559, 308.8392

12.2212, 9.3824,
18.4612

291.5678,
275.9763, 368.7703

6.9678, 4.9914,
11.1088

346.6039,

3.4881, 2.2422,

330.0512, 435.9924

6.0249

408.1634,
390.7650, 510.9242

■ 1.4168, 0.7429,
2.7912

■ 0.2682, 0.0000,
0.9890

■ 77.8819, 69.4175,
103.9018

■ 77.8819, 69.4175,
103.9018

■ 71.2034, 57.8160,
102.0145

■ 85.5743, 83.0130,
106.1206

■ 65.4843, 48.1028,
100.4411

■ 94.3202, 98.6841,
108.6845

■ 60.6739, 40.1753,
99.1645

■ 95.0500, 100.0000,
108.9000

■ 56.7143, 33.9180,
98.1654

■ 53.5408, 29.2016,
97.4223

■ 51.0791, 25.8779,
96.9105

■ 49.2403, 23.7691,
96.6004

■ 47.9680, 22.6433,
96.4501

Harmonies

Analogous

The Analogous color harmony consists of three colors that are next to each other on the color wheel.



71.4371, 69.4175, 120.4232



77.8819, 69.4175, 103.9018



81.1918, 69.4175, 81.5993

Triad

The Triadic color harmony groups three colors that are evenly spaced from another and form a triangle on the color wheel.



77.8819, 69.4175, 103.9018



68.0475, 69.4175, 41.8251



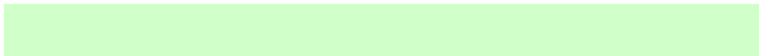
53.5546, 69.4175, 91.8468

Complementary

The Complementary color scheme is a pair of colors which are on the opposite of each other on the color wheel.



77.8819, 69.4175, 103.9018



72.7169, 89.3404, 69.2924

Split Complementary

Split-complementary colors differ from the complementary color scheme. The scheme consists of three colors, the original color and two neighbors of the complement color.



52.7965, 69.4175, 69.8716



77.8819, 69.4175, 103.9018



60.8067, 69.4175, 43.5377

Square

The Square scheme is like the rectangle color scheme, but the four colors are evenly spaced on the color wheel.



77.8819, 69.4175, 103.9018



75.2412, 69.4175, 47.7238



55.3556, 69.4175, 52.9442



57.5104, 69.4175, 112.6016

Rectangle

The Rectangle color scheme consists of four colors that form a rectangle on the color wheel.



77.8819, 69.4175, 103.9018



81.0143, 69.4175, 67.5152



55.3556, 69.4175, 52.9442



52.9299, 69.4175, 84.2711

Sweetspot

The Sweet Spot groups the original color and five complimentary colors.



77.8838, 69.4204, 103.9023



89.6224, 90.2425, 107.3027



65.2266, 65.4133, 103.7960



19.0615, 19.0982, 22.9316



0.0000, 0.0000, 0.0000



20.3446, 21.4041, 23.3091

Same Dimension

The Same Dimension uses a secret algorithm to generate beautiful new colors.



77.8838, 69.4204, 103.9023



74.9457, 64.2889, 103.0667



77.4395, 69.5347, 88.3688



18.5428, 18.1716, 22.7801



25.1562, 11.8790, 50.4016



2.5121, 1.1889, 4.9104

Inverse Universe

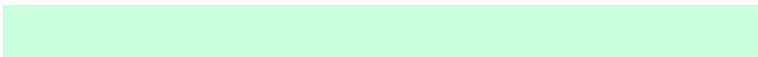
The Inverse Universe completely reimagines the original color for something new.



73.8709, 68.1073, 69.5766



70.3120, 62.7854, 62.8537



73.2280, 89.3211, 82.0933



18.1070, 18.0261, 19.1806



21.7270, 11.1801, 1.9471



2.1443, 1.1001, 0.3411

Previews

White Background



This preview shows how the XYZ color 77.8819, 69.4175, 103.9018 looks on a white background.

Color Contrast Check

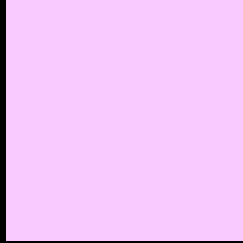
Large Text (above 18pt) WCAG AA × Fail

Any Text WCAG AA × Fail

Large Text (above 18pt) WCAG AAA × Fail

Any Text WCAG AAA × Fail

Black Background



This preview shows how the XYZ color 77.8819, 69.4175, 103.9018 looks on a black background.

Color Contrast Check

Large Text (above 18pt) WCAG AA ✓ Pass

Any Text WCAG AA ✓ Pass

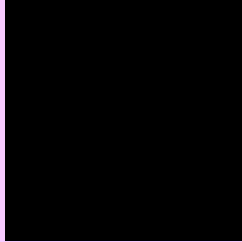
Large Text (above 18pt) WCAG AAA ✓ Pass

Any Text WCAG AAA ✓ Pass

If you want to check with other color combinations, try the [Color Contrast Checker](#).

XYZ 77.8819, 69.4175, 103.9018

Background



This preview shows how black text looks on a background with the XYZ color 77.8819, 69.4175, 103.9018.



This preview shows how white text looks on a background with the XYZ color 77.8819, 69.4175,

103.9018.

Color Blindness Simulation

Color vision deficiency is a very complex topic, and I could not describe the different causes any better than Wikipedia does, so if you want to learn more, you should check out their [article about color blindness](#).

Dichromacy



Original Color

77.8819, 69.4175, 103.9018

Protanopia

68.9004, 69.8870, 104.4659

Deuteranopia

71.0919, 69.5510, 102.6062



Tritanopia

72.9726, 69.5483, 80.0991

Trichromacy



Original Color

77.8819, 69.4175, 103.9018



Protanomaly

71.7757, 69.4965, 104.2389



Deuteranomaly

73.4003, 69.2564, 103.2651



Tritanomaly

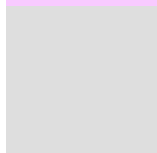
74.7229, 69.5532, 88.0841

Monochromacy



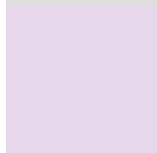
Original Color

77.8819, 69.4175, 103.9018



Achromatopsia

69.4303, 73.0461, 79.5472



Achromatomaly

72.1067, 71.5303, 87.8482

CSS Examples

Text

The CSS property to change the color of the text to XYZ 77.8819, 69.4175, 103.9018 is called "color". The color property can be set on classes, ids or directly on the HTML element.

This example shows how text in the color `rgb(248, 202, 255)` looks like.

```
.text, #text, p{  
    color:rgb(248, 202, 255)  
}
```

If you want to add a text shadow in that color use the text-shadow property, you can generate a text shadow directly with our [CSS Text Shadow Generator](#).

Here you see how black text with a 4 pixel rgb(248, 202, 255) colored shadow looks like.

```
.shadow{ text-shadow: 4px 4px 2px rgb(248, 202, 255) }
```

Border

The CSS property to change the border of an element to XYZ 77.8819, 69.4175, 103.9018 is called "border". The border property can be set on classes, ids or directly on the HTML element.

This example shows the color as border, it can be applied via the CSS property "border" or "border-color".

```
.border, #border, table{ border:4px solid rgb(248, 202, 255) }
```


If only the border color should be changed use the property `border-color`.

```
.border{ border-color:rgb(248, 202, 255) }
```

If you want to add a box shadow in that color use:

Here you see how a box with a 4 pixel `rgb(248, 202, 255)` colored shadow looks like.

```
.boxshadow{ -moz-box-shadow:4px 4px 4px  
4px rgb(248, 202, 255); -webkit-box-  
shadow:4px 4px 4px 4px rgb(248, 202, 255);  
box-shadow:4px 4px 4px 4px rgb(248, 202,  
255) }
```

Background

The CSS property to change the background color of an element to XYZ 77.8819, 69.4175, 103.9018 is called "background". The background property can be set on classes, ids or directly on the HTML element.

```
.background, #background, body{  
background: rgb(248, 202, 255) }
```

If only the background color should be changed can be used:

```
.background{ background-color: rgb(248,  
202, 255) }
```

This example shows the color as background, it is applied via the CSS property "background".

To optimize and compress your CSS code, you can use our [online CSS compressor and optimizer](#) based on csstidy. If you want to create a linear or radial gradient as background or border, check our [CSS Gradient Generator](#).

Hey! You found this booklet interesting? Support Converting Colors with the new Membership Option!

The pro membership hides all ads, plus gives you double the colors in the color bucket, and more awesome pro features!

[Learn more, Memberships starting at \\$2.50/m!](#)

**Follow me
on Twitter!**

@ConvertingColor