

Converting Colors

XYZ(78.0085, 70.0893, 90.3570)

Have a look what the booklet for
XYZ(78.0085, 70.0893, 90.3570)
contains.

XYZ(78.0286, 70.1449, 90.3157)	3
<i>Conversions</i>	4
<i>Details</i>	6
<i>Harmonies</i>	12
<i>Previews</i>	24
<i>Color Blindness Simulation</i>	28
<i>CSS Examples</i>	31

Color

**XYZ(78.0286, 70.1449,
90.3157)**

Conversions

Conversions Part 1

Format	Color
Hex	FFCBEE
RGB	255, 203, 238
RGB Percent	100%, 80%, 93%
CMY	0.0000, 0.2039, 0.0667
CMYK	0.00, 0.20, 0.07, 0.00
HSL	320°, 100%, 90%
HSV	320°, 20%, 100%
XYZ	78.0286, 70.1449, 90.3157
YIQ	222.5380, 19.7570, 21.9090

Conversions

Conversions Part 2

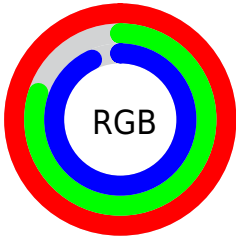
Format	Color
R_{YB}	255, 203, 238
Decimal	16763886
CIE _{Lab}	87.07, 23.92, -10.21
CIE _{LCh}	87, 26.006, 336.877
Yxy	70.1449, 0.3272, 0.2941
Android (android.graphics.Color)	4294953966 (0xFFFFCBEE)
YUV	222.5380, 7.6228, 28.4692
Hunter-Lab	83.7526, 19.7337, -5.3094

Details

The XYZ color **78.0286, 70.1449, 90.3157** is a light color, and the websafe version is hex **FFCCFF**. A complement of this color would be **73.3090, 89.3849, 81.1025**, and the grayscale version is **69.7509, 73.3834, 79.9145**.

A 20% lighter version of the original color is **95.0500, 100.0000, 108.9000**, and **42.4796, 36.8781, 49.1352** is the 20% darker color. If you saturate the color by 10%, you get **71.2981, 58.5988, 82.1690**, and if you desaturate by 10%, it is **85.8093, 83.7001, 99.0942**.

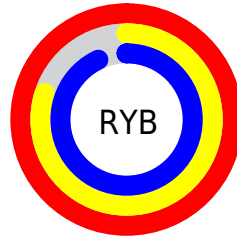
Distribution



Red (100%)

Green (80%)

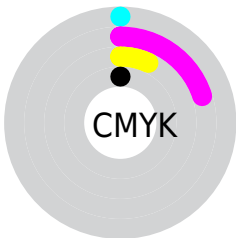
Blue (93%)



Red (100%)

Yellow (80%)

Blue (93%)

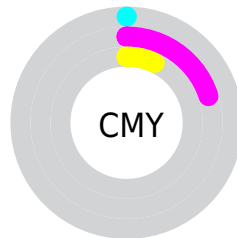


Cyan (0%)

Magenta (20%)

Yellow (7%)

Black (0%)



Cyan (0%)

Magenta (20%)

Yellow (7%)

Brightness & Saturation Gradients

These gradients show how the XYZ color 78.0286, 70.1449, 90.3157 changes by changing the brightness by 10 percent. The first figure shows a shift by +10% for each color and the second figure -10%.

Similar to the brightness gradients but the following saturation gradients show a change of the XYZ color 78.0286, 70.1449, 90.3157 by changing the saturation by 10% instead.

78.0286, 70.1449,
90.3157

78.0286, 70.1449,
90.3157

477.1023,
461.0586, 549.6539

58.4003, 51.6447,
67.6673

129.5556,
119.4154, 149.7162

42.3751, 36.7219,
49.1621

162.1850,
150.9544, 187.3054

29.5875, 24.9923,
34.3816

199.8789,
187.6085, 230.7119

19.6722, 16.0713,
22.9072

243.0026,
229.7620, 280.3544

12.2639, 9.5746,
14.3203

291.9214,
277.7994, 336.6512

6.9971, 5.1178,
8.2025

347.0007,

3.5066, 2.3166,

332.1050, 400.0211

4.1352

408.6059,
393.0633, 470.8824

■ 1.4270, 0.7825,
1.6998

■ 0.2753, 0.0000,
0.3606

■ 78.0286, 70.1449,
90.3157

■ 78.0286, 70.1449,
90.3157

■ 71.2981, 58.5988,
82.1690

■ 85.8093, 83.7001,
99.0942

■ 65.5640, 48.9563,
74.6296

94.6813, 99.3464,
108.5192

■ 60.7748, 41.1150,
67.6775

95.0500, 100.0000,
108.9000

■ 56.8720, 34.9596,
61.2893

■ 53.7905, 30.3610,
55.4392

■ 51.4558, 27.1717,
50.0985

■ 49.7791, 25.2151,
45.2332

■ 48.6511, 24.2244,
40.9562

Harmonies

Analogous

The Analogous color harmony consists of three colors that are next to each other on the color wheel.



73.9466, 70.1449, 106.4620



78.0286, 70.1449, 90.3157



78.9836, 70.1449, 72.4309

Triad

The Triadic color harmony groups three colors that are evenly spaced from another and form a triangle on the color wheel.



78.0286, 70.1449, 90.3157



65.2785, 70.1449, 47.6876



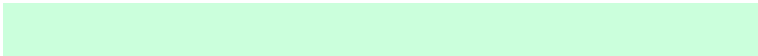
57.7364, 70.1449, 98.3174

Complementary

The Complementary color scheme is a pair of colors which are on the opposite of each other on the color wheel.



78.0286, 70.1449, 90.3157



73.3090, 89.3849, 81.1025

Split Complementary

Split-complementary colors differ from the complementary color scheme. The scheme consists of three colors, the original color and two neighbors of the complement color.



55.7088, 70.1449, 80.4616



78.0286, 70.1449, 90.3157



59.8883, 70.1449, 52.5700

Square

The Square scheme is like the rectangle color scheme, but the four colors are evenly spaced on the color wheel.



78.0286, 70.1449, 90.3157



71.3752, 70.1449, 49.5018



56.4720, 70.1449, 63.9497



62.1775, 70.1449, 111.5510

Rectangle

The Rectangle color scheme consists of four colors that form a rectangle on the color wheel.



78.0286, 70.1449, 90.3157



77.6692, 70.1449, 62.1977



56.4720, 70.1449, 63.9497



56.7627, 70.1449, 92.5599

Sweetspot

The Sweet Spot groups the original color and five complimentary colors.



78.0301, 70.1477, 90.3172



89.5668, 90.3057, 103.1508



68.7625, 65.0678, 103.5429



19.0484, 19.1132, 21.9476



0.0000, 0.0000, 0.0000



20.3446, 21.4041, 23.3091

Same Dimension

The Same Dimension uses a secret algorithm to generate beautiful new colors.



78.0301, 70.1477, 90.3172



75.4815, 65.7523, 87.3041



74.5490, 68.7553, 71.9857



18.5253, 18.1934, 21.3832



25.4929, 12.6865, 21.7779



2.5325, 1.2554, 2.3855

Inverse Universe

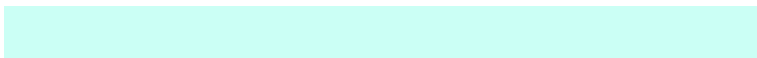
The Inverse Universe completely reimagines the original color for something new.



78.0301, 70.1477, 90.3172



75.4815, 65.7523, 87.3041



76.9431, 90.8385, 100.2393



18.5253, 18.1934, 21.3832



25.4929, 12.6865, 21.7779



2.5325, 1.2554, 2.3855

Previews

White Background



This preview shows how the XYZ color 78.0286, 70.1449, 90.3157 looks on a white background.

Color Contrast Check

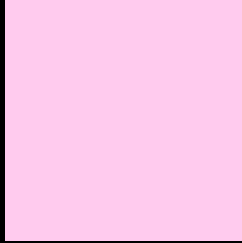
Large Text (above 18pt) WCAG AA × Fail

Any Text WCAG AA × Fail

Large Text (above 18pt) WCAG AAA × Fail

Any Text WCAG AAA × Fail

Black Background



This preview shows how the XYZ color 78.0286, 70.1449, 90.3157 looks on a black background.

Color Contrast Check

Large Text (above 18pt) WCAG AA ✓ Pass

Any Text WCAG AA ✓ Pass

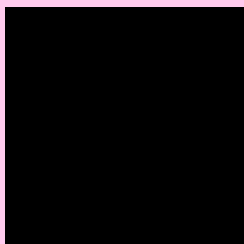
Large Text (above 18pt) WCAG AAA ✓ Pass

Any Text WCAG AAA ✓ Pass

If you want to check with other color combinations, try the [Color Contrast Checker](#).

XYZ 78.0286, 70.1449, 90.3157

Background



This preview shows how black text looks on a background with the XYZ color 78.0286, 70.1449, 90.3157.



This preview shows how white text looks on a background with the XYZ color 78.0286, 70.1449,

Color Blindness Simulation

Color vision deficiency is a very complex topic, and I could not describe the different causes any better than Wikipedia does, so if you want to learn more, you should check out their [article about color blindness](#).

Dichromacy



Original Color

78.0286, 70.1449, 90.3157

Protanopia

69.3329, 70.6373, 97.9758

Deuteranopia

71.6388, 70.1320, 89.1179



Tritanopia

75.7641, 70.2992, 78.6831

Trichromacy



Original Color

78.0286, 70.1449, 90.3157



Protanomaly

72.1857, 70.2766, 95.3481



Deuteranomaly

74.0217, 70.2406, 89.7772



Tritanomaly

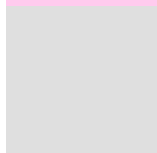
76.7080, 70.3349, 82.9318

Monochromacy



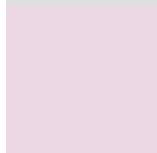
Original Color

78.0286, 70.1449, 90.3157



Achromatopsia

70.1384, 73.7910, 80.3584



Achromatomaly

72.8204, 72.3753, 83.5306

CSS Examples

Text

The CSS property to change the color of the text to XYZ 78.0286, 70.1449, 90.3157 is called "color". The color property can be set on classes, ids or directly on the HTML element.

This example shows how text in the color `rgb(255, 203, 238)` looks like.

```
.text, #text, p{  
    color:rgb(255, 203, 238)  
}
```

If you want to add a text shadow in that color use the text-shadow property, you can generate a text shadow directly with our [CSS Text Shadow Generator](#).

Here you see how black text with a 4 pixel rgb(255, 203, 238) colored shadow looks like.

```
.shadow{ text-shadow: 4px 4px 2px rgb(255, 203, 238) }
```

Border

The CSS property to change the border of an element to XYZ 78.0286, 70.1449, 90.3157 is called "border". The border property can be set on classes, ids or directly on the HTML element.

This example shows the color as border, it can be applied via the CSS property "border" or "border-color".

```
.border, #border, table{ border:4px solid rgb(255, 203, 238) }
```


If only the border color should be changed use the property `border-color`.

```
.border{ border-color:rgb(255, 203, 238) }
```

If you want to add a box shadow in that color use:

Here you see how a box with a 4 pixel `rgb(255, 203, 238)` colored shadow looks like.

```
.boxshadow{ -moz-box-shadow:4px 4px 4px  
4px rgb(255, 203, 238); -webkit-box-  
shadow:4px 4px 4px 4px rgb(255, 203, 238);  
box-shadow:4px 4px 4px 4px rgb(255, 203,  
238) }
```

Background

The CSS property to change the background color of an element to XYZ 78.0286, 70.1449, 90.3157 is called "background". The background property can be set on classes, ids or directly on the HTML element.

```
.background, #background, body{  
background: rgb(255, 203, 238) }
```

If only the background color should be changed can be used:

```
.background{ background-color: rgb(255,  
203, 238) }
```

This example shows the color as background, it is applied via the CSS property "background".

To optimize and compress your CSS code, you can use our [online CSS compressor and optimizer](#) based on csstidy. If you want to create a linear or radial gradient as background or border, check our [CSS Gradient Generator](#).

Hey! You found this booklet interesting? Support Converting Colors with the new Membership Option!

The pro membership hides all ads, plus gives you double the colors in the color bucket, and more awesome pro features!

[Learn more, Memberships starting at \\$2.50/m!](#)

**Follow me
on Twitter!**

@ConvertingColor