

# Converting Colors

XYZ(78.8637, 67.6273,  
103.5046)

Have a look what the booklet for  
XYZ(78.8637, 67.6273, 103.5046)  
contains.

<b>XYZ(78.8051, 67.5102, 103.4850)</b> .....	3
<b><i>Conversions</i></b> .....	4
<b><i>Details</i></b> .....	6
<b><i>Harmonies</i></b> .....	12
<b><i>Previews</i></b> .....	24
<b><i>Color Blindness Simulation</i></b> .....	28
<b><i>CSS Examples</i></b> .....	31

# Color

**XYZ(78.8051, 67.5102,  
103.4850)**

# Conversions

## Conversions Part 1

Format	Color
Hex	FFC3FF
RGB	255, 195, 255
RGB Percent	100%, 76%, 100%
CMY	0.0000, 0.2353, 0.0000
CMYK	0.00, 0.24, 0.00, 0.00
HSL	300°, 100%, 88%
HSV	300°, 24%, 100%
XYZ	78.8051, 67.5102, 103.4850
YIQ	219.7800, 16.5000, 31.3800

# Conversions

## Conversions Part 2

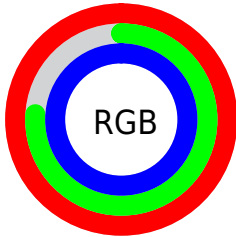
Format	Color
R <sub>Y</sub> B	255, 195, 255
Decimal	16761855
CIE Lab	85.76, 31.10, -21.19
CIE LCh	86, 37.631, 325.732
Yxy	67.5102, 0.3155, 0.2703
Android (android.graphics.Color)	4294951935 (0xFFFFC3FF)
YUV	219.7800, 17.3635, 30.8879
Hunter-Lab	82.1646, 27.4136, -17.1596

# Details

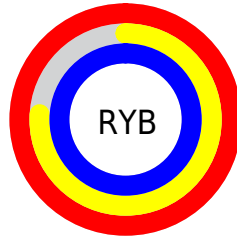
The XYZ color **78.8051, 67.5102, 103.4850** is a light color, and the websafe version is hex **FFCCFF**. A complement of this color would be **68.1181, 87.0632, 64.8478**, and the grayscale version is **67.7503, 71.2786, 77.6224**.

A 20% lighter version of the original color is **94.1004, 98.1008, 108.5835**, and **43.0066, 35.1327, 57.9407** is the 20% darker color. If you saturate the color by 10%, you get **73.5722, 57.0445, 101.7407**, and if you desaturate by 10%, it is **85.0161, 79.9322, 105.5554**.

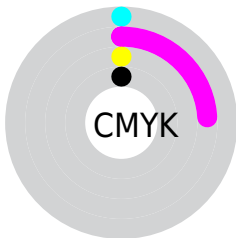
# Distribution



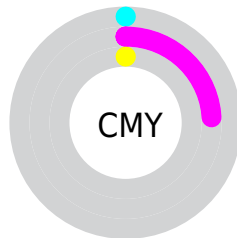
- Red (100%)
- Green (76%)
- Blue (100%)



- Red (100%)
- Yellow (76%)
- Blue (100%)



- Cyan (0%)
- Magenta (24%)
- Yellow (0%)
- Black (0%)



- Cyan (0%)
- Magenta (24%)
- Yellow (0%)

# Brightness & Saturation Gradients

These gradients show how the XYZ color 78.8051, 67.5102, 103.4850 changes by changing the brightness by 10 percent. The first figure shows a shift by +10% for each color and the second figure -10%.

Similar to the brightness gradients but the following saturation gradients show a change of the XYZ color 78.8051, 67.5102, 103.4850 by changing the saturation by 10% instead.



78.8051, 67.5102,  
103.4850

78.8051, 67.5102,  
103.4850

479.6948,  
451.7587, 592.6509

59.0407, 49.4994,  
78.5811

130.6438,  
115.6512, 168.0317

42.8923, 35.0158,  
58.0322

163.4488,  
146.5501, 208.5116

29.9948, 23.6750,  
41.4197

201.3313,  
182.5138, 255.0206

19.9827, 15.0927,  
28.3250

244.6568,  
223.9268, 307.9772

12.4907, 8.8845,  
18.3296

293.7905,  
271.1734, 367.8000

7.1533, 4.6659,  
11.0150

349.0979,

3.6054, 2.0526,

324.6379, 434.9075

5.9626

410.9442,  
384.7049, 509.7183

■ 1.4814, 0.6378,  
2.7539

■ 0.3131, 0.0000,  
0.9704

■ 78.8051, 67.5102,  
103.4850

■ 78.8051, 67.5102,  
103.4850

■ 73.5722, 57.0445,  
101.7407

■ 85.0161, 79.9322,  
105.5554

■ 69.2641, 48.4282,  
100.3047

■ 92.2475, 94.3950,  
107.9658

■ 65.8281, 41.5563,  
99.1594

95.0500, 100.0000,  
108.9000

■ 63.2048, 36.3097,  
98.2849

■ 61.3273, 32.5547,  
97.6591

■ 60.1182, 30.1363,  
97.2561

■ 59.4829, 28.8657,  
97.0443

■ 59.2900, 28.4800,  
96.9800

# Harmonies

## Analogous

The Analogous color harmony consists of three colors that are next to each other on the color wheel.



71.6069, 67.5102, 124.8774



78.8051, 67.5102, 103.4850



82.0849, 67.5102, 77.0840

# Triad

The Triadic color harmony groups three colors that are evenly spaced from another and form a triangle on the color wheel.



78.8051, 67.5102, 103.4850



65.4035, 67.5102, 35.7096



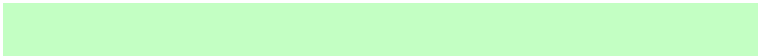
50.4092, 67.5102, 96.0132

# Complementary

The Complementary color scheme is a pair of colors which are on the opposite of each other on the color wheel.



78.8051, 67.5102, 103.4850



68.1181, 87.0632, 64.8478

# Split Complementary

Split-complementary colors differ from the complementary color scheme. The scheme consists of three colors, the original color and two neighbors of the complement color.



49.0660, 67.5102, 70.0426



78.8051, 67.5102, 103.4850



57.2601, 67.5102, 38.6016

# Square

The Square scheme is like the rectangle color scheme, but the four colors are evenly spaced on the color wheel.



78.8051, 67.5102, 103.4850



73.9220, 67.5102, 40.9387



51.4630, 67.5102, 49.9619



55.3093, 67.5102, 119.9320



# Rectangle

The Rectangle color scheme consists of four colors that form a rectangle on the color wheel.



78.8051, 67.5102, 103.4850



81.4117, 67.5102, 61.4146



51.4630, 67.5102, 49.9619



49.5466, 67.5102, 87.0912

# Sweetspot

The Sweet Spot groups the original color and five complimentary colors.



78.8064, 67.5128, 103.4855



89.6176, 89.1353, 107.0892



60.0735, 57.8556, 102.6088



19.0868, 18.8885, 22.8898



0.0000, 0.0000, 0.0000



20.3446, 21.4041, 23.3091



# Same Dimension

The Same Dimension uses a secret algorithm to generate beautiful new colors.



78.8064, 67.5128, 103.4855



76.3475, 62.5950, 102.6658



74.3474, 65.7292, 80.0047



18.7928, 18.3004, 22.7918



30.9803, 14.8814, 50.6741



3.0164, 1.4490, 4.9340



# Inverse Universe

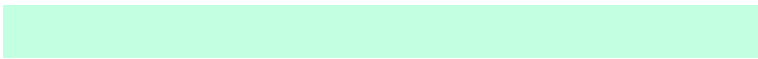
The Inverse Universe completely reimagines the original color for something new.



78.8064, 67.5128, 103.4855



76.3475, 62.5950, 102.6658



71.8581, 88.5593, 84.5425



18.7928, 18.3004, 22.7918



30.9803, 14.8814, 50.6741



3.0164, 1.4490, 4.9340



# Previews

## White Background



This preview shows how the XYZ color 78.8051, 67.5102, 103.4850 looks on a white background.

## Color Contrast Check

Large Text (above 18pt) WCAG AA × Fail

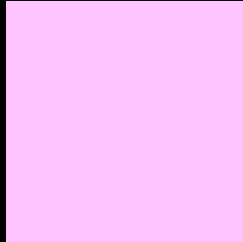
Any Text WCAG AA × Fail

Large Text (above 18pt) WCAG AAA × Fail

Any Text WCAG AAA × Fail



# Black Background



This preview shows how the XYZ color 78.8051, 67.5102, 103.4850 looks on a black background.

## Color Contrast Check

Large Text (above 18pt) WCAG AA ✓ Pass

Any Text WCAG AA ✓ Pass

Large Text (above 18pt) WCAG AAA ✓ Pass

Any Text WCAG AAA ✓ Pass

If you want to check with other color combinations, try the [Color Contrast Checker](#).

# XYZ 78.8051, 67.5102, 103.4850

## Background



This preview shows how black text looks on a background with the XYZ color 78.8051, 67.5102, 103.4850.



This preview shows how white text looks on a background with the XYZ color 78.8051, 67.5102,

103.4850.

# Color Blindness Simulation

Color vision deficiency is a very complex topic, and I could not describe the different causes any better than Wikipedia does, so if you want to learn more, you should check out their [article about color blindness](#).

## Dichromacy



### Original Color

78.8051, 67.5102, 103.4850

### Protanopia

67.0211, 67.7876, 104.1597

### Deuteranopia

69.2326, 67.8732, 101.5473



## Tritanopia

73.1998, 67.6270, 75.5249

# Trichromacy



## Original Color

78.8051, 67.5102, 103.4850



## Protanomaly

70.5527, 67.0506, 103.8313



## Deuteranomaly

72.5159, 67.7434, 102.1823



## Tritanomaly

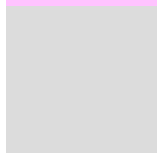
74.9921, 67.3118, 84.6413

# Monochromacy



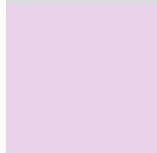
## Original Color

78.8051, 67.5102, 103.4850



## Achromatopsia

68.0267, 71.5694, 77.9390



## Achromatomaly

71.6065, 69.7954, 86.7886

# CSS Examples

## Text

The CSS property to change the color of the text to XYZ 78.8051, 67.5102, 103.4850 is called "color". The color property can be set on classes, ids or directly on the HTML element.

This example shows how text in the color `rgb(255, 195, 255)` looks like.

```
.text, #text, p{  
    color:rgb(255, 195, 255)  
}
```

If you want to add a text shadow in that color use the text-shadow property, you can generate a text shadow directly with our [CSS Text Shadow Generator](#).

Here you see how black text with a 4 pixel rgb(255, 195, 255) colored shadow looks like.

```
.shadow{ text-shadow: 4px 4px 2px rgb(255, 195, 255) }
```

## Border

The CSS property to change the border of an element to XYZ 78.8051, 67.5102, 103.4850 is called "border". The border property can be set on classes, ids or directly on the HTML element.

This example shows the color as border, it can be applied via the CSS property "border" or "border-color".

```
.border, #border, table{ border:4px solid rgb(255, 195, 255) }
```



If only the border color should be changed use the property `border-color`.

```
.border{ border-color:rgb(255, 195, 255) }
```

If you want to add a box shadow in that color use:

Here you see how a box with a 4 pixel `rgb(255, 195, 255)` colored shadow looks like.

```
.boxshadow{ -moz-box-shadow:4px 4px 4px  
4px rgb(255, 195, 255); -webkit-box-  
shadow:4px 4px 4px 4px rgb(255, 195, 255);  
box-shadow:4px 4px 4px 4px rgb(255, 195,  
255) }
```

# Background

The CSS property to change the background color of an element to XYZ 78.8051, 67.5102, 103.4850 is called "background". The background property can be set on classes, ids or directly on the HTML element.

```
.background, #background, body{  
background: rgb(255, 195, 255) }
```

If only the background color should be changed can be used:

```
.background{ background-color: rgb(255,  
195, 255) }
```

This example shows the color as background, it is applied via the CSS property "background".

To optimize and compress your CSS code, you can use our [online CSS compressor and optimizer](#) based on csstidy. If you want to create a linear or radial gradient as background or border, check our [CSS Gradient Generator](#).

Hey! You found this booklet interesting? Support Converting Colors with the new Membership Option!

The pro membership hides all ads, plus gives you double the colors in the color bucket, and more awesome pro features!

**[Learn more, Memberships starting at \\$2.50/m!](#)**

**Follow me  
on Twitter!**

@ConvertingColor