

Converting Colors

XYZ(79.3069, 69.5336,
100.5082)

Have a look what the booklet for
XYZ(79.3069, 69.5336, 100.5082)
contains.

XYZ(79.3069, 69.5336, 100.5082)	3
<i>Conversions</i>	4
<i>Details</i>	6
<i>Harmonies</i>	12
<i>Previews</i>	24
<i>Color Blindness Simulation</i>	28
<i>CSS Examples</i>	31

Color

**XYZ(79.3069, 69.5336,
100.5082)**

Conversions

Conversions Part 1

Format	Color
Hex	FFC8FB
RGB	255, 200, 251
RGB Percent	100%, 78%, 98%
CMY	0.0000, 0.2157, 0.0157
CMYK	0.00, 0.22, 0.02, 0.00
HSL	304°, 100%, 89%
HSV	304°, 22%, 100%
XYZ	79.3069, 69.5336, 100.5082
YIQ	222.2590, 16.4090, 27.5210

Conversions

Conversions Part 2

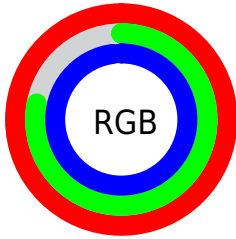
Format	Color
RYB	255, 200, 251
Decimal	16763131
CIELab	86.77, 27.75, -17.55
CIELCh	87, 32.837, 327.694
Yxy	69.5336, 0.3181, 0.2789
Android (android.graphics.Color)	4294953211 (0xFFFFC8FB)
YUV	222.2590, 14.1693, 28.7139
Hunter-Lab	83.3868, 23.8395, -13.0929

Details

The XYZ color **79.3069, 69.5336, 100.5082** is a light color, and the websafe version is hex **FFCCFF**. A complement of this color would be **70.4806, 88.1600, 70.4314**, and the grayscale version is **69.5105, 73.1304, 79.6390**.

A 20% lighter version of the original color is **95.0500, 100.0000, 108.9000**, and **43.3052, 36.4586, 55.7937** is the 20% darker color. If you saturate the color by 10%, you get **73.5958, 58.5766, 97.1704**, and if you desaturate by 10%, it is **86.0087, 82.4669, 104.1923**.

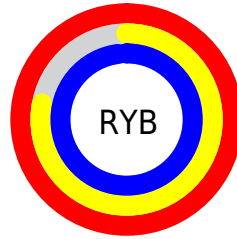
Distribution



Red (100%)

Green (78%)

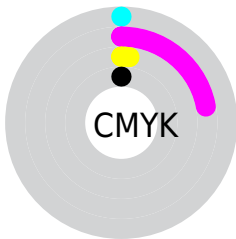
Blue (98%)



Red (100%)

Yellow (78%)

Blue (98%)

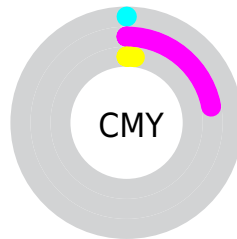


Cyan (0%)

Magenta (22%)

Yellow (2%)

Black (0%)



Cyan (0%)

Magenta (22%)

Yellow (2%)

Brightness & Saturation Gradients

These gradients show how the XYZ color 79.3069, 69.5336, 100.5082 changes by changing the brightness by 10 percent. The first figure shows a shift by +10% for each color and the second figure -10%.

Similar to the brightness gradients but the following saturation gradients show a change of the XYZ color 79.3069, 69.5336, 100.5082 by changing the saturation by 10% instead.

79.3069, 69.5336,
100.5082

79.3069, 69.5336,
100.5082

481.3661,
458.9107, 583.0814

59.4547, 51.1464,
76.1058

131.3465,
118.5434, 163.9134

43.2270, 36.3251,
56.0121

164.2645,
149.9348, 203.7532

30.2586, 24.6854,
39.8085

202.2686,
186.4297, 249.5759

20.1840, 15.8428,
27.0766

245.7240,
228.4125, 301.8000

12.6379, 9.4130,
17.3979

294.9961,
276.2676, 360.8440

7.2549, 5.0115,
10.3536

350.4502,

3.6698, 2.2540,

330.3794, 427.1266

5.5254

412.4518,
391.1323, 501.0662

■ 1.5171, 0.7492,
2.4946

■ 0.3374, 0.0000,
0.8373

■ 79.3069, 69.5336,
100.5082

■ 79.3069, 69.5336,
100.5082

■ 73.5958, 58.5766,
97.1704

■ 86.0087, 82.4669,
104.1923

■ 68.8221, 49.4902,
94.1581

■ 93.7422, 97.4593,
108.2336

■ 64.9344, 42.1711,
91.4552

95.0500, 100.0000,
108.9000

■ 61.8743, 36.5029,
89.0422

■ 59.5767, 32.3550,
86.8974

■ 57.9665, 29.5774,
84.9956

■ 56.9534, 27.9895,
83.3067

■ 56.4470, 27.3428,
82.0091

Harmonies

Analogous

The Analogous color harmony consists of three colors that are next to each other on the color wheel.



73.1585, 69.5336, 119.4320



79.3069, 69.5336, 100.5082



81.8901, 69.5336, 77.4164

Triad

The Triadic color harmony groups three colors that are evenly spaced from another and form a triangle on the color wheel.



79.3069, 69.5336, 100.5082



66.6827, 69.5336, 40.9586



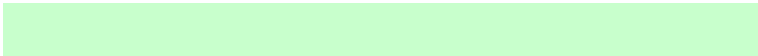
53.9111, 69.5336, 97.0067

Complementary

The Complementary color scheme is a pair of colors which are on the opposite of each other on the color wheel.



79.3069, 69.5336, 100.5082



70.4806, 88.1600, 70.4314

Split Complementary

Split-complementary colors differ from the complementary color scheme. The scheme consists of three colors, the original color and two neighbors of the complement color.



52.4647, 69.5336, 74.0294



79.3069, 69.5336, 100.5082



59.4914, 69.5336, 44.2206

Square

The Square scheme is like the rectangle color scheme, but the four colors are evenly spaced on the color wheel.



79.3069, 69.5336, 100.5082



74.2599, 69.5336, 45.4145



54.4290, 69.5336, 55.3686



58.5417, 69.5336, 117.1518

Rectangle

The Rectangle color scheme consists of four colors that form a rectangle on the color wheel.



79.3069, 69.5336, 100.5082



81.1042, 69.5336, 63.6236



54.4290, 69.5336, 55.3686



53.0528, 69.5336, 89.2382

Sweetspot

The Sweet Spot groups the original color and five complimentary colors.



79.3084, 69.5363, 100.5097



90.1832, 90.5522, 106.3967



63.5176, 61.3223, 103.0964



19.1945, 19.1717, 22.7167



0.0000, 0.0000, 0.0000



20.3446, 21.4041, 23.3091

Same Dimension

The Same Dimension uses a secret algorithm to generate beautiful new colors.



79.3084, 69.5363, 100.5097



76.6566, 64.4396, 98.9877



75.3280, 67.9442, 79.5492



18.7323, 18.2762, 22.4734



29.5189, 14.2969, 42.9786



2.8905, 1.3986, 4.2709

Inverse Universe

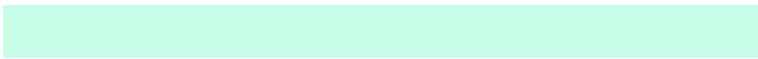
The Inverse Universe completely reimagines the original color for something new.



79.3084, 69.5363, 100.5097



76.6566, 64.4396, 98.9877



74.0287, 89.5792, 89.1154



18.7323, 18.2762, 22.4734



29.5189, 14.2969, 42.9786



2.8905, 1.3986, 4.2709

Previews

White Background



This preview shows how the XYZ color 79.3069, 69.5336, 100.5082 looks on a white background.

Color Contrast Check

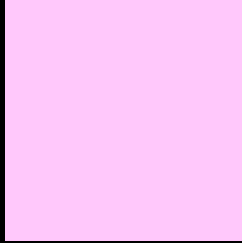
Large Text (above 18pt) WCAG AA × Fail

Any Text WCAG AA × Fail

Large Text (above 18pt) WCAG AAA × Fail

Any Text WCAG AAA × Fail

Black Background



This preview shows how the XYZ color 79.3069, 69.5336, 100.5082 looks on a black background.

Color Contrast Check

Large Text (above 18pt) WCAG AA ✓ Pass

Any Text WCAG AA ✓ Pass

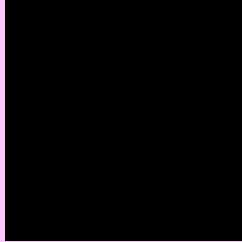
Large Text (above 18pt) WCAG AAA ✓ Pass

Any Text WCAG AAA ✓ Pass

If you want to check with other color combinations, try the [Color Contrast Checker](#).

XYZ 79.3069, 69.5336, 100.5082

Background



This preview shows how black text looks on a background with the XYZ color 79.3069, 69.5336, 100.5082.



This preview shows how white text looks on a background with the XYZ color 79.3069, 69.5336,

Color Blindness Simulation

Color vision deficiency is a very complex topic, and I could not describe the different causes any better than Wikipedia does, so if you want to learn more, you should check out their [article about color blindness](#).

Dichromacy



Original Color

79.3069, 69.5336, 100.5082

Protanopia

68.9004, 69.8870, 104.4659

Deuteranopia

71.3828, 69.7738, 99.3279



Tritanopia

74.6661, 69.3923, 77.8653

Trichromacy



Original Color

79.3069, 69.5336, 100.5082



Protanomaly

72.3000, 69.4177, 103.3543



Deuteranomaly

74.0721, 69.6760, 99.9873



Tritanomaly

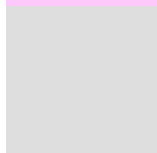
76.0663, 69.2335, 85.6982

Monochromacy



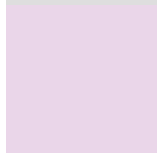
Original Color

79.3069, 69.5336, 100.5082



Achromatopsia

69.4303, 73.0461, 79.5472



Achromatomaly

72.6862, 71.4688, 87.0547

CSS Examples

Text

The CSS property to change the color of the text to XYZ 79.3069, 69.5336, 100.5082 is called "color". The color property can be set on classes, ids or directly on the HTML element.

This example shows how text in the color `rgb(255, 200, 251)` looks like.

```
.text, #text, p{  
    color:rgb(255, 200, 251)  
}
```

If you want to add a text shadow in that color use the text-shadow property, you can generate a text shadow directly with our [CSS Text Shadow Generator](#).

Here you see how black text with a 4 pixel rgb(255, 200, 251) colored shadow looks like.

```
.shadow{ text-shadow: 4px 4px 2px rgb(255, 200, 251) }
```

Border

The CSS property to change the border of an element to XYZ 79.3069, 69.5336, 100.5082 is called "border". The border property can be set on classes, ids or directly on the HTML element.

This example shows the color as border, it can be applied via the CSS property "border" or "border-color".

```
.border, #border, table{ border:4px solid rgb(255, 200, 251) }
```


If only the border color should be changed use the property border-color.

```
.border{ border-color:rgb(255, 200, 251) }
```

If you want to add a box shadow in that color use:

Here you see how a box with a 4 pixel rgb(255, 200, 251) colored shadow looks like.

```
.boxshadow{ -moz-box-shadow:4px 4px 4px  
4px rgb(255, 200, 251); -webkit-box-  
shadow:4px 4px 4px 4px rgb(255, 200, 251);  
box-shadow:4px 4px 4px 4px rgb(255, 200,  
251) }
```

Background

The CSS property to change the background color of an element to XYZ 79.3069, 69.5336, 100.5082 is called "background". The background property can be set on classes, ids or directly on the HTML element.

```
.background, #background, body{  
background: rgb(255, 200, 251) }
```

If only the background color should be changed can be used:

```
.background{ background-color: rgb(255,  
200, 251) }
```

This example shows the color as background, it is applied via the CSS property "background".

To optimize and compress your CSS code, you can use our [online CSS compressor and optimizer](#) based on csstidy. If you want to create a linear or radial gradient as background or border, check our [CSS Gradient Generator](#).

Hey! You found this booklet interesting? Support Converting Colors with the new Membership Option!

The pro membership hides all ads, plus gives you double the colors in the color bucket, and more awesome pro features!

[Learn more, Memberships starting at \\$2.50/m!](#)

**Follow me
on Twitter!**

@ConvertingColor