

Converting Colors

XYZ(79.3467, 71.0513, 96.0883)

Have a look what the booklet for
XYZ(79.3467, 71.0513, 96.0883)
contains.

XYZ(79.3143, 71.0383, 95.9176)	3
<i>Conversions</i>	4
<i>Details</i>	6
<i>Harmonies</i>	12
<i>Previews</i>	24
<i>Color Blindness Simulation</i>	28
<i>CSS Examples</i>	31

Color

**XYZ(79.3143, 71.0383,
95.9176)**

Conversions

Conversions Part 1

Format	Color
Hex	FFCCF5
RGB	255, 204, 245
RGB Percent	100%, 80%, 96%
CMY	0.0000, 0.2000, 0.0392
CMYK	0.00, 0.20, 0.04, 0.00
HSL	312°, 100%, 90%
HSV	312°, 20%, 100%
XYZ	79.3143, 71.0383, 95.9176
YIQ	223.9230, 17.2350, 23.5630

Conversions

Conversions Part 2

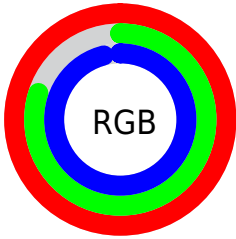
Format	Color
R _Y B	255, 204, 245
Decimal	16764149
CIE Lab	87.50, 24.60, -13.27
CIE LCh	88, 27.947, 331.654
Yxy	71.0383, 0.3221, 0.2885
Android (android.graphics.Color)	4294954229 (0xFFFFCCF5)
YUV	223.9230, 10.3910, 27.2545
Hunter-Lab	84.2842, 20.4771, -8.4746

Details

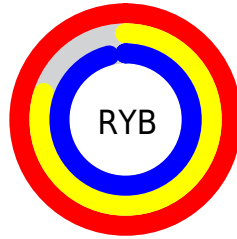
The XYZ color **79.3143, 71.0383, 95.9176** is a light color, and the websafe version is hex **FFCCFF**. A complement of this color would be **72.8016, 89.2135, 77.0043**, and the grayscale version is **70.7176, 74.4004, 81.0220**.

A 20% lighter version of the original color is **95.0500, 100.0000, 108.9000**, and **43.3804, 37.4926, 53.0945** is the 20% darker color. If you saturate the color by 10%, you get **72.9896, 59.5938, 90.0948**, and if you desaturate by 10%, it is **86.6550, 84.4812, 102.1827**.

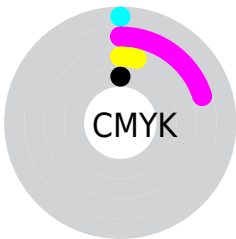
Distribution



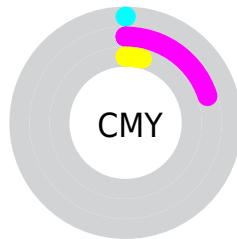
- Red (100%)
- Green (80%)
- Blue (96%)



- Red (100%)
- Yellow (80%)
- Blue (96%)



- Cyan (0%)
- Magenta (20%)
- Yellow (4%)
- Black (0%)



- Cyan (0%)
- Magenta (20%)
- Yellow (4%)

Brightness & Saturation Gradients

These gradients show how the XYZ color 79.3143, 71.0383, 95.9176 changes by changing the brightness by 10 percent. The first figure shows a shift by +10% for each color and the second figure -10%.

Similar to the brightness gradients but the following saturation gradients show a change of the XYZ color 79.3143, 71.0383, 95.9176 by changing the saturation by 10% instead.

79.3143, 71.0383,
95.9176

79.3143, 71.0383,
95.9176

481.3908,
464.1873, 568.1576

59.4608, 52.3735,
72.2978

131.3568,
120.6883, 157.5382

43.2320, 37.3028,
52.9137

164.2766,
152.4422, 196.3760

30.2625, 25.4420,
37.3466

202.2824,
189.3279, 241.1237

20.1870, 16.4067,
25.1781

245.7397,
231.7298, 292.1997

12.6401, 9.8124,
15.9896

295.0139,
280.0323, 350.0225

7.2564, 5.2748,
9.3625

350.4702,

3.6707, 2.4094,

334.6198, 415.0108

4.8783

412.4740,
395.8767, 487.5830

■ 1.5176, 0.8307,
2.1186

■ 0.3378, 0.0000,
0.6268

■ 79.3143, 71.0383,
95.9176

■ 79.3143, 71.0383,
95.9176

■ 72.9896, 59.5938,
90.0948

■ 86.6550, 84.4812,
102.1827

■ 67.6278, 50.0426,
84.6931

95.0500, 100.0000,
108.9000

■ 63.1780, 42.2830,
79.6955

■ 59.5827, 36.2002,
75.0821

■ 56.7779, 31.6662,
70.8308

■ 54.6900, 28.5345,
66.9162

■ 53.2316, 26.6303,
63.3083

■ 52.2597, 25.6680,
59.9586

■ 52.2595, 25.6678,
59.9579

Harmonies

Analogous

The Analogous color harmony consists of three colors that are next to each other on the color wheel.



74.4001, 71.0383, 112.5898



79.3143, 71.0383, 95.9176



81.0143, 71.0383, 76.3045

Triad

The Triadic color harmony groups three colors that are evenly spaced from another and form a triangle on the color wheel.



79.3143, 71.0383, 95.9176



67.1542, 71.0383, 46.4132



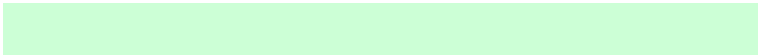
57.2842, 71.0383, 98.0299

Complementary

The Complementary color scheme is a pair of colors which are on the opposite of each other on the color wheel.



79.3143, 71.0383, 95.9176



72.8016, 89.2135, 77.0043

Split Complementary

Split-complementary colors differ from the complementary color scheme. The scheme consists of three colors, the original color and two neighbors of the complement color.



55.6137, 71.0383, 78.4023



79.3143, 71.0383, 95.9176



61.0773, 71.0383, 50.3552

Square

The Square scheme is like the rectangle color scheme, but the four colors are evenly spaced on the color wheel.



79.3143, 71.0383, 95.9176



73.7254, 71.0383, 49.5714



56.9566, 71.0383, 61.3456



61.6725, 71.0383, 113.9423

Rectangle

The Rectangle color scheme consists of four colors that form a rectangle on the color wheel.



79.3143, 71.0383, 95.9176



80.0133, 71.0383, 64.6990



56.9566, 71.0383, 61.3456



56.3996, 71.0383, 91.5481

Sweetspot

The Sweet Spot groups the original color and five complimentary colors.



79.3159, 71.0411, 95.9191



89.8825, 90.4320, 104.8133



67.1878, 64.6077, 103.5371



19.1232, 19.1431, 22.3413



0.0000, 0.0000, 0.0000



20.3446, 21.4041, 23.3091

Same Dimension

The Same Dimension uses a secret algorithm to generate beautiful new colors.



79.3159, 71.0411, 95.9191



76.6650, 66.2257, 93.5362



75.7729, 69.6240, 77.2622



18.6310, 18.2357, 21.9399



27.3607, 13.4336, 31.6138



2.7012, 1.3229, 3.2739

Inverse Universe

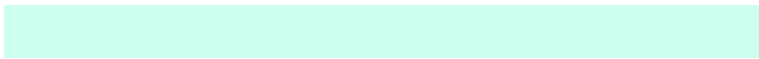
The Inverse Universe completely reimagines the original color for something new.



79.3159, 71.0411, 95.9191



76.6650, 66.2257, 93.5362



76.2215, 90.5814, 95.0133



18.6310, 18.2357, 21.9399



27.3607, 13.4336, 31.6138



2.7012, 1.3229, 3.2739

Previews

White Background



This preview shows how the XYZ color 79.3143, 71.0383, 95.9176 looks on a white background.

Color Contrast Check

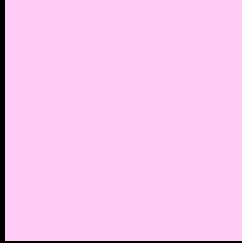
Large Text (above 18pt) WCAG AA × Fail

Any Text WCAG AA × Fail

Large Text (above 18pt) WCAG AAA × Fail

Any Text WCAG AAA × Fail

Black Background



This preview shows how the XYZ color 79.3143, 71.0383, 95.9176 looks on a black background.

Color Contrast Check

Large Text (above 18pt) WCAG AA ✓ Pass

Any Text WCAG AA ✓ Pass

Large Text (above 18pt) WCAG AAA ✓ Pass

Any Text WCAG AAA ✓ Pass

If you want to check with other color combinations, try the [Color Contrast Checker](#).

XYZ 79.3143, 71.0383, 95.9176

Background



This preview shows how black text looks on a background with the XYZ color 79.3143, 71.0383, 95.9176.



This preview shows how white text looks on a background with the XYZ color 79.3143, 71.0383,

95.9176.

Color Blindness Simulation

Color vision deficiency is a very complex topic, and I could not describe the different causes any better than Wikipedia does, so if you want to learn more, you should check out their [article about color blindness](#).

Dichromacy



Original Color

79.3143, 71.0383, 95.9176

Protanopia

70.4014, 71.4447, 103.8456

Deuteranopia

72.8574, 71.3872, 94.7331



Tritanopia

76.1553, 71.1890, 80.2480

Trichromacy



Original Color

79.3143, 71.0383, 95.9176



Protanomaly

73.2017, 71.0475, 101.1222



Deuteranomaly

74.9723, 70.9756, 95.3361



Tritanomaly

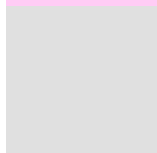
77.3863, 71.3345, 86.0342

Monochromacy



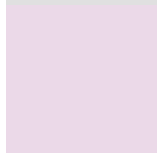
Original Color

79.3143, 71.0383, 95.9176



Achromatopsia

70.8507, 74.5404, 81.1745



Achromatomaly

73.6393, 73.1141, 86.5751

CSS Examples

Text

The CSS property to change the color of the text to XYZ 79.3143, 71.0383, 95.9176 is called "color". The color property can be set on classes, ids or directly on the HTML element.

This example shows how text in the color `rgb(255, 204, 245)` looks like.

```
.text, #text, p{  
    color:rgb(255, 204, 245)  
}
```

If you want to add a text shadow in that color use the text-shadow property, you can generate a text shadow directly with our [CSS Text Shadow Generator](#).

Here you see how black text with a 4 pixel rgb(255, 204, 245) colored shadow looks like.

```
.shadow{ text-shadow: 4px 4px 2px rgb(255, 204, 245) }
```

Border

The CSS property to change the border of an element to XYZ 79.3143, 71.0383, 95.9176 is called "border". The border property can be set on classes, ids or directly on the HTML element.

This example shows the color as border, it can be applied via the CSS property "border" or "border-color".

```
.border, #border, table{ border:4px solid rgb(255, 204, 245) }
```


If only the border color should be changed use the property border-color.

```
.border{ border-color:rgb(255, 204, 245) }
```

If you want to add a box shadow in that color use:

Here you see how a box with a 4 pixel rgb(255, 204, 245) colored shadow looks like.

```
.boxshadow{ -moz-box-shadow:4px 4px 4px  
4px rgb(255, 204, 245); -webkit-box-  
shadow:4px 4px 4px 4px rgb(255, 204, 245);  
box-shadow:4px 4px 4px 4px rgb(255, 204,  
245) }
```

Background

The CSS property to change the background color of an element to XYZ 79.3143, 71.0383, 95.9176 is called "background". The background property can be set on classes, ids or directly on the HTML element.

```
.background, #background, body{  
background: rgb(255, 204, 245) }
```

If only the background color should be changed can be used:

```
.background{ background-color: rgb(255,  
204, 245) }
```

This example shows the color as background, it is applied via the CSS property "background".

To optimize and compress your CSS code, you can use our [online CSS compressor and optimizer](#) based on csstidy. If you want to create a linear or radial gradient as background or border, check our [CSS Gradient Generator](#).

Hey! You found this booklet interesting? Support Converting Colors with the new Membership Option!

The pro membership hides all ads, plus gives you double the colors in the color bucket, and more awesome pro features!

[Learn more, Memberships starting at \\$2.50/m!](#)

**Follow me
on Twitter!**

@ConvertingColor