

Converting Colors

XYZ(79.7291, 70.7037, 99.6447)

Have a look what the booklet for
XYZ(79.7291, 70.7037, 99.6447)
contains.

XYZ(79.8513, 70.8740, 99.9139)	3
<i>Conversions</i>	4
<i>Details</i>	6
<i>Harmonies</i>	12
<i>Previews</i>	24
<i>Color Blindness Simulation</i>	28
<i>CSS Examples</i>	31

Color

**XYZ(79.8513, 70.8740,
99.9139)**

Conversions

Conversions Part 1

Format	Color
Hex	FFCBFA
RGB	255, 203, 250
RGB Percent	100%, 80%, 98%
CMY	0.0000, 0.2039, 0.0196
CMYK	0.00, 0.20, 0.02, 0.00
HSL	306°, 100%, 90%
HSV	306°, 20%, 100%
XYZ	79.8513, 70.8740, 99.9139
YIQ	223.9060, 15.9050, 25.6410

Conversions

Conversions Part 2

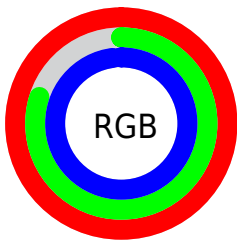
Format	Color
R_{YB}	255, 203, 250
Decimal	16763898
CIE _{Lab}	87.42, 26.00, -16.03
CIE _{LCh}	87, 30.547, 328.340
Yxy	70.8740, 0.3186, 0.2828
Android (android.graphics.Color)	4294953978 (0xFFFFCBFA)
YUV	223.9060, 12.8643, 27.2694
Hunter-Lab	84.1867, 21.9810, -11.4355

Details

The XYZ color **79.8513, 70.8740, 99.9139** is a light color, and the websafe version is hex **FFCCFF**. A complement of this color would be **71.7759, 88.7716, 73.0290**, and the grayscale version is **70.6890, 74.3703, 80.9893**.

A 20% lighter version of the original color is **95.0500, 100.0000, 108.9000**, and **43.6618, 37.3509, 55.3603** is the 20% darker color. If you saturate the color by 10%, you get **73.9357, 59.6538, 96.0586**, and if you desaturate by 10%, it is **86.7653, 84.0825, 104.1287**.

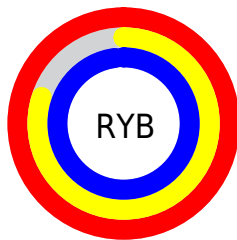
Distribution



Red (100%)

Green (80%)

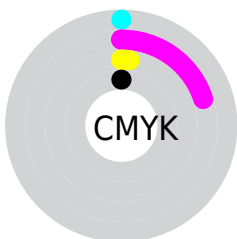
Blue (98%)



Red (100%)

Yellow (80%)

Blue (98%)

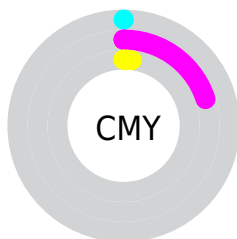


Cyan (0%)

Magenta (20%)

Yellow (2%)

Black (0%)



Cyan (0%)

Magenta (20%)

Yellow (2%)

Brightness & Saturation Gradients

These gradients show how the XYZ color 79.8513, 70.8740, 99.9139 changes by changing the brightness by 10 percent. The first figure shows a shift by +10% for each color and the second figure -10%.

Similar to the brightness gradients but the following saturation gradients show a change of the XYZ color 79.8513, 70.8740, 99.9139 by changing the saturation by 10% instead.

79.8513, 70.8740,
99.9139

79.8513, 70.8740,
99.9139

483.1757,
463.6129, 581.1609

59.9040, 52.2394,
75.6122

132.1083,
120.4543, 163.0897

43.5905, 37.1959,
55.6098

165.1487,
152.1688, 202.8008

30.5452, 25.3592,
39.4883

203.2842,
189.0120, 248.4855

20.4029, 16.3449,
26.8290

246.8802,
231.3683, 300.5623

12.7982, 9.7685,
17.2136

296.3020,
279.6222, 359.4496

7.3658, 5.2458,
10.2233

351.9149,

3.7402, 2.3922,

334.1579, 425.5662

5.4397

414.0844,
395.3600, 499.3304

■ 1.5563, 0.8219,
2.4443

■ 0.3636, 0.0000,
0.8104

■ 79.8513, 70.8740,
99.9139

■ 79.8513, 70.8740,
99.9139

■ 73.9357, 59.6538,
96.0586

■ 86.7653, 84.0825,
104.1287

■ 68.9656, 50.3169,
92.5420

94.7182, 99.3611,
108.7135

■ 64.8900, 42.7611,
89.3480

95.0500, 100.0000,
108.9000

■ 61.6514, 36.8713,
86.4575

■ 59.1854, 32.5190,
83.8487

■ 57.4184, 29.5567,
81.4972

■ 56.2623, 27.8084,
79.3733

■ 55.5910, 27.0004,
77.5015

Harmonies

Analogous

The Analogous color harmony consists of three colors that are next to each other on the color wheel.



74.1532, 70.8740, 117.6030



79.8513, 70.8740, 99.9139



82.1753, 70.8740, 78.3246

Triad

The Triadic color harmony groups three colors that are evenly spaced from another and form a triangle on the color wheel.



79.8513, 70.8740, 99.9139



67.7657, 70.8740, 43.9281



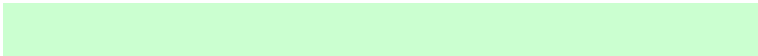
55.8958, 70.8740, 97.5681

Complementary

The Complementary color scheme is a pair of colors which are on the opposite of each other on the color wheel.



79.8513, 70.8740, 99.9139



71.7759, 88.7716, 73.0290

Split Complementary

Split-complementary colors differ from the complementary color scheme. The scheme consists of three colors, the original color and two neighbors of the complement color.



54.4481, 70.8740, 76.0263



79.8513, 70.8740, 99.9139



61.0016, 70.8740, 47.2623

Square

The Square scheme is like the rectangle color scheme, but the four colors are evenly spaced on the color wheel.



79.8513, 70.8740, 99.9139



74.8966, 70.8740, 48.0959



56.2508, 70.8740, 58.1690



60.3534, 70.8740, 116.0878

Rectangle

The Rectangle color scheme consists of four colors that form a rectangle on the color wheel.



79.8513, 70.8740, 99.9139



81.3815, 70.8740, 65.3516



56.2508, 70.8740, 58.1690



55.0556, 70.8740, 90.3331

Sweetspot

The Sweet Spot groups the original color and five complimentary colors.



79.8528, 70.8768, 99.9154



90.1259, 90.5293, 106.0948



65.2341, 63.2488, 103.3778



19.1809, 19.1662, 22.6450



0.0000, 0.0000, 0.0000



20.3446, 21.4041, 23.3091

Same Dimension

The Same Dimension uses a secret algorithm to generate beautiful new colors.



79.8528, 70.8768, 99.9154



77.6043, 66.6014, 98.4828



76.1429, 69.3928, 80.3793



18.7129, 18.2685, 22.3715



29.0784, 14.1206, 40.6587



2.8522, 1.3833, 4.0693

Inverse Universe

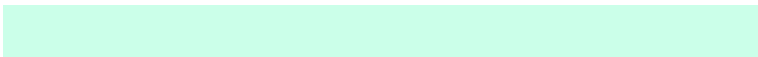
The Inverse Universe completely reimagines the original color for something new.



79.8528, 70.8768, 99.9154



77.6043, 66.6014, 98.4828



75.1462, 90.1197, 90.7767



18.7129, 18.2685, 22.3715



29.0784, 14.1206, 40.6587



2.8522, 1.3833, 4.0693

Previews

White Background



This preview shows how the XYZ color 79.8513, 70.8740, 99.9139 looks on a white background.

Color Contrast Check

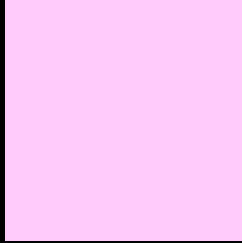
Large Text (above 18pt) WCAG AA × Fail

Any Text WCAG AA × Fail

Large Text (above 18pt) WCAG AAA × Fail

Any Text WCAG AAA × Fail

Black Background



This preview shows how the XYZ color 79.8513, 70.8740, 99.9139 looks on a black background.

Color Contrast Check

Large Text (above 18pt) WCAG AA ✓ Pass

Any Text WCAG AA ✓ Pass

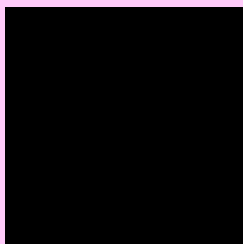
Large Text (above 18pt) WCAG AAA ✓ Pass

Any Text WCAG AAA ✓ Pass

If you want to check with other color combinations, try the [Color Contrast Checker](#).

XYZ 79.8513, 70.8740, 99.9139

Background



This preview shows how black text looks on a background with the XYZ color 79.8513, 70.8740, 99.9139.



This preview shows how white text looks on a background with the XYZ color 79.8513, 70.8740,

99.9139.

Color Blindness Simulation

Color vision deficiency is a very complex topic, and I could not describe the different causes any better than Wikipedia does, so if you want to learn more, you should check out their [article about color blindness](#).

Dichromacy



Original Color

79.8513, 70.8740, 99.9139

Protanopia

70.2728, 71.3599, 104.6778

Deuteranopia

72.6684, 71.2013, 98.7201



Tritanopia

75.7941, 71.0028, 80.2311

Trichromacy



Original Color

79.8513, 70.8740, 99.9139



Protanomaly

73.5188, 71.1743, 102.7917



Deuteranomaly

75.0705, 70.9373, 99.3581



Tritanomaly

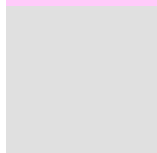
76.9242, 70.7213, 86.6870

Monochromacy



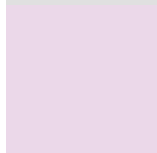
Original Color

79.8513, 70.8740, 99.9139



Achromatopsia

70.8507, 74.5404, 81.1745



Achromatomaly

73.5248, 72.6571, 87.2398

CSS Examples

Text

The CSS property to change the color of the text to XYZ 79.8513, 70.8740, 99.9139 is called "color". The color property can be set on classes, ids or directly on the HTML element.

This example shows how text in the color `rgb(255, 203, 250)` looks like.

```
.text, #text, p{  
    color:rgb(255, 203, 250)  
}
```

If you want to add a text shadow in that color use the text-shadow property, you can generate a text shadow directly with our [CSS Text Shadow Generator](#).

Here you see how black text with a 4 pixel rgb(255, 203, 250) colored shadow looks like.

```
.shadow{ text-shadow: 4px 4px 2px rgb(255, 203, 250) }
```

Border

The CSS property to change the border of an element to XYZ 79.8513, 70.8740, 99.9139 is called "border". The border property can be set on classes, ids or directly on the HTML element.

This example shows the color as border, it can be applied via the CSS property "border" or "border-color".

```
.border, #border, table{ border:4px solid rgb(255, 203, 250) }
```


If only the border color should be changed use the property `border-color`.

```
.border{ border-color:rgb(255, 203, 250) }
```

If you want to add a box shadow in that color use:

Here you see how a box with a 4 pixel `rgb(255, 203, 250)` colored shadow looks like.

```
.boxshadow{ -moz-box-shadow:4px 4px 4px  
4px rgb(255, 203, 250); -webkit-box-  
shadow:4px 4px 4px 4px rgb(255, 203, 250);  
box-shadow:4px 4px 4px 4px rgb(255, 203,  
250) }
```

Background

The CSS property to change the background color of an element to XYZ 79.8513, 70.8740, 99.9139 is called "background". The background property can be set on classes, ids or directly on the HTML element.

```
.background, #background, body{  
background: rgb(255, 203, 250) }
```

If only the background color should be changed can be used:

```
.background{ background-color: rgb(255,  
203, 250) }
```

This example shows the color as background, it is applied via the CSS property "background".

To optimize and compress your CSS code, you can use our [online CSS compressor and optimizer](#) based on csstidy. If you want to create a linear or radial gradient as background or border, check our [CSS Gradient Generator](#).

Hey! You found this booklet interesting? Support Converting Colors with the new Membership Option!

The pro membership hides all ads, plus gives you double the colors in the color bucket, and more awesome pro features!

[Learn more, Memberships starting at \\$2.50/m!](#)

**Follow me
on Twitter!**

@ConvertingColor