

Converting Colors

XYZ(79.8288, 71.1223,
104.1283)

Have a look what the booklet for
XYZ(79.8288, 71.1223, 104.1283)
contains.

XYZ(79.7877, 71.1012, 104.1264)	3
<i>Conversions</i>	4
<i>Details</i>	6
<i>Harmonies</i>	12
<i>Previews</i>	24
<i>Color Blindness Simulation</i>	28
<i>CSS Examples</i>	31

Color

**XYZ(79.7877, 71.1012,
104.1264)**

Conversions

Conversions Part 1

Format	Color
Hex	FCCCFF
RGB	252, 204, 255
RGB Percent	99%, 80%, 100%
CMY	0.0118, 0.2000, 0.0000
CMYK	0.01, 0.20, 0.00, 0.00
HSL	296°, 100%, 90%
HSV	296°, 20%, 100%
XYZ	79.7877, 71.1012, 104.1264
YIQ	224.1660, 12.2370, 26.0370

Conversions

Conversions Part 2

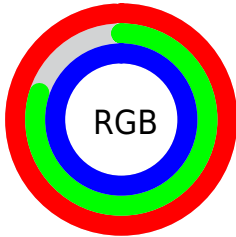
Format	Color
R _Y B	252, 204, 255
Decimal	16567551
CIE Lab	87.53, 25.40, -18.54
CIE LCh	88, 31.444, 323.877
Yxy	71.1012, 0.3129, 0.2788
Android (android.graphics.Color)	4294757631 (0xFFFC00FF)
YUV	224.1660, 15.2012, 24.4104
Hunter-Lab	84.3215, 21.3397, -14.1906

Details

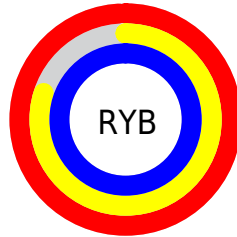
The XYZ color **79.7877, 71.1012, 104.1264** is a light color, and the websafe version is hex **FFCCFF**. A complement of this color would be **72.3931, 89.1459, 70.5217**, and the grayscale version is **70.8606, 74.5508, 81.1859**.

A 20% lighter version of the original color is **95.0500, 100.0000, 108.9000**, and **43.6051, 37.4920, 58.3645** is the 20% darker color. If you saturate the color by 10%, you get **73.6757, 59.6793, 102.2439**, and if you desaturate by 10%, it is **86.9001, 84.5157, 106.3408**.

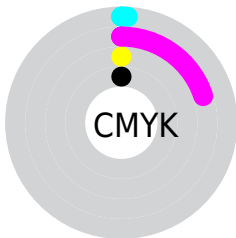
Distribution



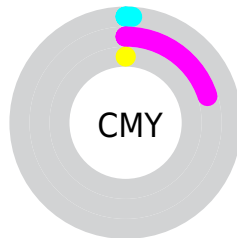
- Red (99%)
- Green (80%)
- Blue (100%)



- Red (99%)
- Yellow (80%)
- Blue (100%)



- Cyan (1%)
- Magenta (20%)
- Yellow (0%)
- Black (0%)



- Cyan (1%)
- Magenta (20%)
- Yellow (0%)

Brightness & Saturation Gradients

These gradients show how the XYZ color 79.7877, 71.1012, 104.1264 changes by changing the brightness by 10 percent. The first figure shows a shift by +10% for each color and the second figure -10%.

Similar to the brightness gradients but the following saturation gradients show a change of the XYZ color 79.7877, 71.1012, 104.1264 by changing the saturation by 10% instead.

79.7877, 71.1012,
104.1264

79.7877, 71.1012,
104.1264

482.9645,
464.4071, 594.7021

59.8515, 52.4248,
79.1151

132.0193,
120.7778, 168.9175

43.5480, 37.3438,
58.4686

165.0454,
152.5468, 209.5344

30.5117, 25.4738,
41.7683

203.1656,
189.4488, 256.1902

20.3773, 16.4304,
28.5957

246.7452,
231.8681, 309.3034

12.7795, 9.8292,
18.5322

296.1495,
280.1892, 369.2927

7.3528, 5.2859,
11.1594

351.7439,

3.7320, 2.4160,

334.7965, 436.5766

6.0586

413.8938,
396.0743, 511.5735

■ 1.5517, 0.8341,
2.8114

■ 0.3606, 0.0000,
0.9992

■ 79.7877, 71.1012,
104.1264

■ 79.7877, 71.1012,
104.1264

■ 73.6757, 59.6793,
102.2439

■ 86.9001, 84.5157,
106.3408

■ 68.5100, 50.1446,
100.6757

95.0500, 100.0000,
108.9000

■ 64.2403, 42.3955,
99.4051

■ 60.8093, 36.3174,
98.4127

■ 58.1529, 31.7823,
97.6773

■ 56.1979, 28.6437,
97.1746

■ 54.8570, 26.7269,
96.8753

■ 53.9873, 25.7465,
96.7319

■ 53.9871, 25.7463,
96.7318

Harmonies

Analogous

The Analogous color harmony consists of three colors that are next to each other on the color wheel.



73.5284, 71.1012, 121.1767



79.7877, 71.1012, 104.1264



82.8016, 71.1012, 81.8631

Triad

The Triadic color harmony groups three colors that are evenly spaced from another and form a triangle on the color wheel.



79.7877, 71.1012, 104.1264



69.1147, 71.1012, 43.4476



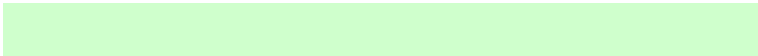
55.3406, 71.1012, 95.1862

Complementary

The Complementary color scheme is a pair of colors which are on the opposite of each other on the color wheel.



79.7877, 71.1012, 104.1264



72.3931, 89.1459, 70.5217

Split Complementary

Split-complementary colors differ from the complementary color scheme. The scheme consists of three colors, the original color and two neighbors of the complement color.



54.3477, 71.1012, 73.1351



79.7877, 71.1012, 104.1264



61.9606, 71.1012, 45.7093

Square

The Square scheme is like the rectangle color scheme, but the four colors are evenly spaced on the color wheel.



79.7877, 71.1012, 104.1264



76.3555, 71.1012, 48.8496



56.6849, 71.1012, 55.7169



59.5032, 71.1012, 115.3890

Rectangle

The Rectangle color scheme consists of four colors that form a rectangle on the color wheel.



79.7877, 71.1012, 104.1264



82.4180, 71.1012, 68.0134



56.6849, 71.1012, 55.7169



54.6384, 71.1012, 87.6499

Sweetspot

The Sweet Spot groups the original color and five complimentary colors.



79.7897, 71.1042, 104.1269



90.0316, 90.4535, 107.3218



65.3646, 64.8805, 103.6859



19.1585, 19.1482, 22.9362



0.0000, 0.0000, 0.0000



20.3446, 21.4041, 23.3091

Same Dimension

The Same Dimension uses a secret algorithm to generate beautiful new colors.



79.7897, 71.1042, 104.1269



77.2257, 66.2985, 103.3344



77.5283, 70.3261, 86.5059



18.6810, 18.2428, 22.7866



28.2549, 13.4764, 50.5466



2.7819, 1.3280, 4.9230

Inverse Universe

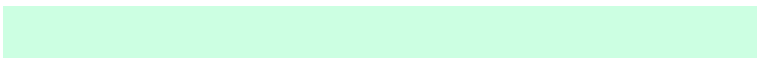
The Inverse Universe completely reimagines the original color for something new.



74.0972, 68.9537, 68.4383



70.6111, 63.8041, 61.6569



74.4051, 89.8548, 85.4480



18.0527, 18.0044, 18.8945



21.6106, 11.1335, 1.3341



2.1187, 1.0898, 0.2063

Previews

White Background



This preview shows how the XYZ color 79.7877, 71.1012, 104.1264 looks on a white background.

Color Contrast Check

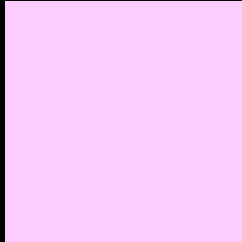
Large Text (above 18pt) WCAG AA × Fail

Any Text WCAG AA × Fail

Large Text (above 18pt) WCAG AAA × Fail

Any Text WCAG AAA × Fail

Black Background



This preview shows how the XYZ color 79.7877, 71.1012, 104.1264 looks on a black background.

Color Contrast Check

Large Text (above 18pt) WCAG AA ✓ Pass

Any Text WCAG AA ✓ Pass

Large Text (above 18pt) WCAG AAA ✓ Pass

Any Text WCAG AAA ✓ Pass

If you want to check with other color combinations, try the [Color Contrast Checker](#).

XYZ 79.7877, 71.1012, 104.1264

Background



This preview shows how black text looks on a background with the XYZ color 79.7877, 71.1012, 104.1264.



This preview shows how white text looks on a background with the XYZ color 79.7877, 71.1012,

Color Blindness Simulation

Color vision deficiency is a very complex topic, and I could not describe the different causes any better than Wikipedia does, so if you want to learn more, you should check out their [article about color blindness](#).

Dichromacy



Original Color

79.7877, 71.1012, 104.1264

Protanopia

70.2728, 71.3599, 104.6778

Deuteranopia

72.8275, 71.1925, 102.8316



Tritanopia

75.2393, 71.0484, 81.6997

Trichromacy



Original Color

79.7877, 71.1012, 104.1264



Protanomaly

73.5228, 71.1394, 104.4639



Deuteranomaly

75.1969, 70.9111, 103.4898



Tritanomaly

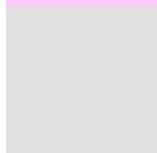
76.6658, 70.8798, 89.7612

Monochromacy



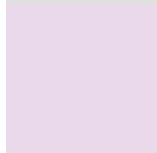
Original Color

79.7877, 71.1012, 104.1264



Achromatopsia

70.8507, 74.5404, 81.1745



Achromatomaly

73.7399, 73.1163, 88.8236

CSS Examples

Text

The CSS property to change the color of the text to XYZ 79.7877, 71.1012, 104.1264 is called "color". The color property can be set on classes, ids or directly on the HTML element.

This example shows how text in the color `rgb(252, 204, 255)` looks like.

```
.text, #text, p{  
    color:rgb(252, 204, 255)  
}
```

If you want to add a text shadow in that color use the text-shadow property, you can generate a text shadow directly with our [CSS Text Shadow Generator](#).

Here you see how black text with a 4 pixel rgb(252, 204, 255) colored shadow looks like.

```
.shadow{ text-shadow: 4px 4px 2px rgb(252, 204, 255) }
```

Border

The CSS property to change the border of an element to XYZ 79.7877, 71.1012, 104.1264 is called "border". The border property can be set on classes, ids or directly on the HTML element.

This example shows the color as border, it can be applied via the CSS property "border" or "border-color".

```
.border, #border, table{ border:4px solid rgb(252, 204, 255) }
```


If only the border color should be changed use the property `border-color`.

```
.border{ border-color:rgb(252, 204, 255) }
```

If you want to add a box shadow in that color use:

Here you see how a box with a 4 pixel `rgb(252, 204, 255)` colored shadow looks like.

```
.boxshadow{ -moz-box-shadow:4px 4px 4px  
4px rgb(252, 204, 255); -webkit-box-  
shadow:4px 4px 4px 4px rgb(252, 204, 255);  
box-shadow:4px 4px 4px 4px rgb(252, 204,  
255) }
```

Background

The CSS property to change the background color of an element to XYZ 79.7877, 71.1012, 104.1264 is called "background". The background property can be set on classes, ids or directly on the HTML element.

```
.background, #background, body{  
background: rgb(252, 204, 255) }
```

If only the background color should be changed can be used:

```
.background{ background-color: rgb(252,  
204, 255) }
```

This example shows the color as background, it is applied via the CSS property "background".

To optimize and compress your CSS code, you can use our [online CSS compressor and optimizer](#) based on csstidy. If you want to create a linear or radial gradient as background or border, check our [CSS Gradient Generator](#).

Hey! You found this booklet interesting? Support Converting Colors with the new Membership Option!

The pro membership hides all ads, plus gives you double the colors in the color bucket, and more awesome pro features!

[Learn more, Memberships starting at \\$2.50/m!](#)

**Follow me
on Twitter!**

@ConvertingColor