

# Converting Colors

XYZ(79.8678, 69.6356,  
103.8393)

Have a look what the booklet for  
XYZ(79.8678, 69.6356, 103.8393)  
contains.

<b>XYZ(79.9443, 69.7886, 103.8648)</b> .....	3
<b><i>Conversions</i></b> .....	4
<b><i>Details</i></b> .....	6
<b><i>Harmonies</i></b> .....	12
<b><i>Previews</i></b> .....	24
<b><i>Color Blindness Simulation</i></b> .....	28
<b><i>CSS Examples</i></b> .....	31

# Color

**XYZ(79.9443, 69.7886,  
103.8648)**

# Conversions

## Conversions Part 1

<b>Format</b>	<b>Color</b>
Hex	FFC8FF
RGB	255, 200, 255
RGB Percent	100%, 78%, 100%
CMY	0.0000, 0.2157, 0.0000
CMYK	0.00, 0.22, 0.00, 0.00
HSL	300°, 100%, 89%
HSV	300°, 22%, 100%
XYZ	79.9443, 69.7886, 103.8648
YIQ	222.7150, 15.1250, 28.7650

# Conversions

## Conversions Part 2

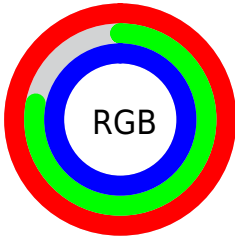
Format	Color
R <sub>Y</sub> B	255, 200, 255
Decimal	16763135
CIE Lab	86.89, 28.47, -19.48
CIE LCh	87, 34.496, 325.624
Yxy	69.7886, 0.3152, 0.2752
Android (android.graphics.Color)	4294953215 (0xFFFFC8FF)
YUV	222.7150, 15.9165, 28.3139
Hunter-Lab	83.5396, 24.6237, -15.2376

# Details

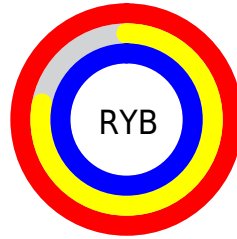
The XYZ color **79.9443, 69.7886, 103.8648** is a light color, and the websafe version is hex **FFCCFF**. A complement of this color would be **70.0070, 87.9706, 67.9374**, and the grayscale version is **69.8217, 73.4578, 79.9956**.

A 20% lighter version of the original color is **95.0500, 100.0000, 108.9000**, and **43.7606, 36.6408, 58.1920** is the 20% darker color. If you saturate the color by 10%, you get **74.5240, 58.9479, 102.0580**, and if you desaturate by 10%, it is **86.3522, 82.6043, 106.0007**.

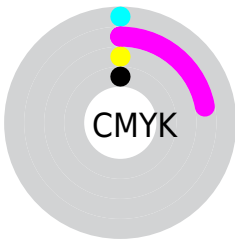
# Distribution



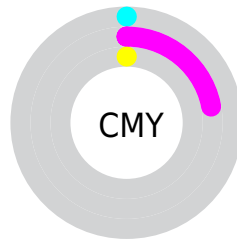
- Red (100%)
- Green (78%)
- Blue (100%)



- Red (100%)
- Yellow (78%)
- Blue (100%)



- Cyan (0%)
- Magenta (22%)
- Yellow (0%)
- Black (0%)



- Cyan (0%)
- Magenta (22%)
- Yellow (0%)

# Brightness & Saturation Gradients

These gradients show how the XYZ color 79.9443, 69.7886, 103.8648 changes by changing the brightness by 10 percent. The first figure shows a shift by +10% for each color and the second figure -10%.

Similar to the brightness gradients but the following saturation gradients show a change of the XYZ color 79.9443, 69.7886, 103.8648 by changing the saturation by 10% instead.



79.9443, 69.7886,  
103.8648

79.9443, 69.7886,  
103.8648

483.4845,  
459.8074, 593.8660

59.9808, 51.3542,  
78.8973

132.2384,  
118.9072, 168.5563

43.6526, 36.4906,  
58.2905

165.2996,  
150.3603, 209.1173

30.5942, 24.8133,  
41.6260

203.4576,  
186.9216, 255.7133

20.4404, 15.9380,  
28.4852

247.0775,  
228.9757, 308.7627

12.8257, 9.4803,  
18.4495

296.5248,  
276.9070, 368.6842

7.3848, 5.0558,  
11.1004

352.1649,

3.7523, 2.2800,

331.0997, 435.8962

6.0194

414.3630,  
391.9384, 510.8173

■ 1.5630, 0.7631,  
2.7879

■ 0.3681, 0.0000,  
0.9874

■ 79.9443, 69.7886,  
103.8648

■ 79.9443, 69.7886,  
103.8648

■ 74.5240, 58.9479,  
102.0580

■ 86.3522, 82.6043,  
106.0007

■ 70.0384, 49.9767,  
100.5628

■ 93.7890, 97.4780,  
108.4797

■ 66.4359, 42.7717,  
99.3620

95.0500, 100.0000,  
108.9000

■ 63.6582, 37.2165,  
98.4361

■ 61.6402, 33.1804,  
97.7634

■ 60.3067, 30.5135,  
97.3189

■ 59.5676, 29.0351,  
97.0725

■ 59.2900, 28.4800,  
96.9800

# Harmonies

## Analogous

The Analogous color harmony consists of three colors that are next to each other on the color wheel.



73.2533, 69.7886, 123.3731



79.9443, 69.7886, 103.8648



82.9926, 69.7886, 79.4207

# Triad

The Triadic color harmony groups three colors that are evenly spaced from another and form a triangle on the color wheel.



79.9443, 69.7886, 103.8648



67.5200, 69.7886, 39.8050



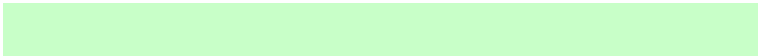
53.3321, 69.7886, 96.8152

# Complementary

The Complementary color scheme is a pair of colors which are on the opposite of each other on the color wheel.



79.9443, 69.7886, 103.8648



70.0070, 87.9706, 67.9374

# Split Complementary

Split-complementary colors differ from the complementary color scheme. The scheme consists of three colors, the original color and two neighbors of the complement color.



52.0651, 69.7886, 72.6555



79.9443, 69.7886, 103.8648



59.8610, 69.7886, 42.6177

# Square

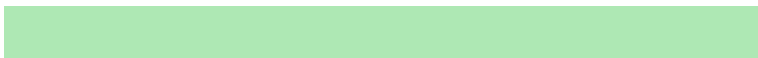
The Square scheme is like the rectangle color scheme, but the four colors are evenly spaced on the color wheel.



79.9443, 69.7886, 103.8648



75.4606, 69.7886, 44.9597



54.3598, 69.7886, 53.6068



57.9709, 69.7886, 118.7594



# Rectangle

The Rectangle color scheme consists of four colors that form a rectangle on the color wheel.



79.9443, 69.7886, 103.8648



82.3824, 69.7886, 64.6638



54.3598, 69.7886, 53.6068



52.5146, 69.7886, 88.5624

# Sweetspot

The Sweet Spot groups the original color and five complimentary colors.



79.9456, 69.7912, 103.8652



90.3618, 90.6237, 107.3373



62.5266, 60.8114, 103.0500



19.2369, 19.1886, 22.9398



0.0000, 0.0000, 0.0000



20.3446, 21.4041, 23.3091



# Same Dimension

The Same Dimension uses a secret algorithm to generate beautiful new colors.



79.9456, 69.7912, 103.8652



77.4231, 64.7463, 103.0244



75.8303, 68.1451, 82.1941



18.7928, 18.3004, 22.7918



30.9803, 14.8814, 50.6741



3.0164, 1.4490, 4.9340



# Inverse Universe

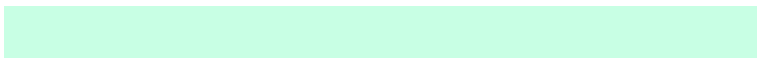
The Inverse Universe completely reimagines the original color for something new.



79.9456, 69.7912, 103.8652



77.4231, 64.7463, 103.0244



73.5156, 89.3740, 86.4137



18.7928, 18.3004, 22.7918



30.9803, 14.8814, 50.6741



3.0164, 1.4490, 4.9340



# Previews

## White Background



This preview shows how the XYZ color 79.9443, 69.7886, 103.8648 looks on a white background.

## Color Contrast Check

Large Text (above 18pt) WCAG AA × Fail

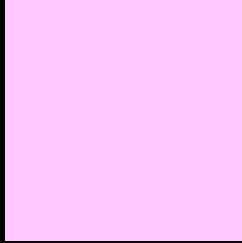
Any Text WCAG AA × Fail

Large Text (above 18pt) WCAG AAA × Fail

Any Text WCAG AAA × Fail



# Black Background



This preview shows how the XYZ color 79.9443, 69.7886, 103.8648 looks on a black background.

## Color Contrast Check

Large Text (above 18pt) WCAG AA ✓ Pass

Any Text WCAG AA ✓ Pass

Large Text (above 18pt) WCAG AAA ✓ Pass

Any Text WCAG AAA ✓ Pass

If you want to check with other color combinations, try the [Color Contrast Checker](#).

# XYZ 79.9443, 69.7886, 103.8648

## Background



This preview shows how black text looks on a background with the XYZ color 79.9443, 69.7886, 103.8648.



This preview shows how white text looks on a background with the XYZ color 79.9443, 69.7886,

103.8648.

# Color Blindness Simulation

Color vision deficiency is a very complex topic, and I could not describe the different causes any better than Wikipedia does, so if you want to learn more, you should check out their [article about color blindness](#).

## Dichromacy



### Original Color

79.9443, 69.7886, 103.8648

### Protanopia

68.9004, 69.8870, 104.4659

### Deuteranopia

71.6481, 70.2099, 102.7041



## Tritanopia

74.6805, 69.7405, 78.6324

# Trichromacy



## Original Color

79.9443, 69.7886, 103.8648



## Protanomaly

72.4606, 69.4819, 104.2000



## Deuteranomaly

74.3770, 69.7599, 103.3109



## Tritanomaly

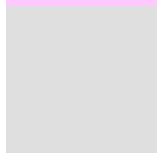
76.5890, 69.8217, 87.2822

# Monochromacy



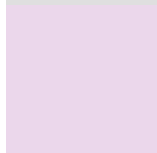
## Original Color

79.9443, 69.7886, 103.8648



## Achromatopsia

70.1384, 73.7910, 80.3584



## Achromatomaly

73.5568, 72.2612, 88.6682

# CSS Examples

## Text

The CSS property to change the color of the text to XYZ 79.9443, 69.7886, 103.8648 is called "color". The color property can be set on classes, ids or directly on the HTML element.

This example shows how text in the color `rgb(255, 200, 255)` looks like.

```
.text, #text, p{  
    color:rgb(255, 200, 255)  
}
```

If you want to add a text shadow in that color use the text-shadow property, you can generate a text shadow directly with our [CSS Text Shadow Generator](#).

Here you see how black text with a 4 pixel rgb(255, 200, 255) colored shadow looks like.

```
.shadow{ text-shadow: 4px 4px 2px rgb(255, 200, 255) }
```

## Border

The CSS property to change the border of an element to XYZ 79.9443, 69.7886, 103.8648 is called "border". The border property can be set on classes, ids or directly on the HTML element.

This example shows the color as border, it can be applied via the CSS property "border" or "border-color".

```
.border, #border, table{ border:4px solid rgb(255, 200, 255) }
```



If only the border color should be changed use the property border-color.

```
.border{ border-color:rgb(255, 200, 255) }
```

If you want to add a box shadow in that color use:

Here you see how a box with a 4 pixel rgb(255, 200, 255) colored shadow looks like.

```
.boxshadow{ -moz-box-shadow:4px 4px 4px  
4px rgb(255, 200, 255); -webkit-box-  
shadow:4px 4px 4px 4px rgb(255, 200, 255);  
box-shadow:4px 4px 4px 4px rgb(255, 200,  
255) }
```

# Background

The CSS property to change the background color of an element to XYZ 79.9443, 69.7886, 103.8648 is called "background". The background property can be set on classes, ids or directly on the HTML element.

```
.background, #background, body{  
background: rgb(255, 200, 255) }
```

If only the background color should be changed can be used:

```
.background{ background-color: rgb(255,  
200, 255) }
```

This example shows the color as background, it is applied via the CSS property "background".

To optimize and compress your CSS code, you can use our [online CSS compressor and optimizer](#) based on csstidy. If you want to create a linear or radial gradient as background or border, check our [CSS Gradient Generator](#).

Hey! You found this booklet interesting? Support Converting Colors with the new Membership Option!

The pro membership hides all ads, plus gives you double the colors in the color bucket, and more awesome pro features!

**[Learn more, Memberships starting at \\$2.50/m!](#)**

**Follow me  
on Twitter!**

@ConvertingColor